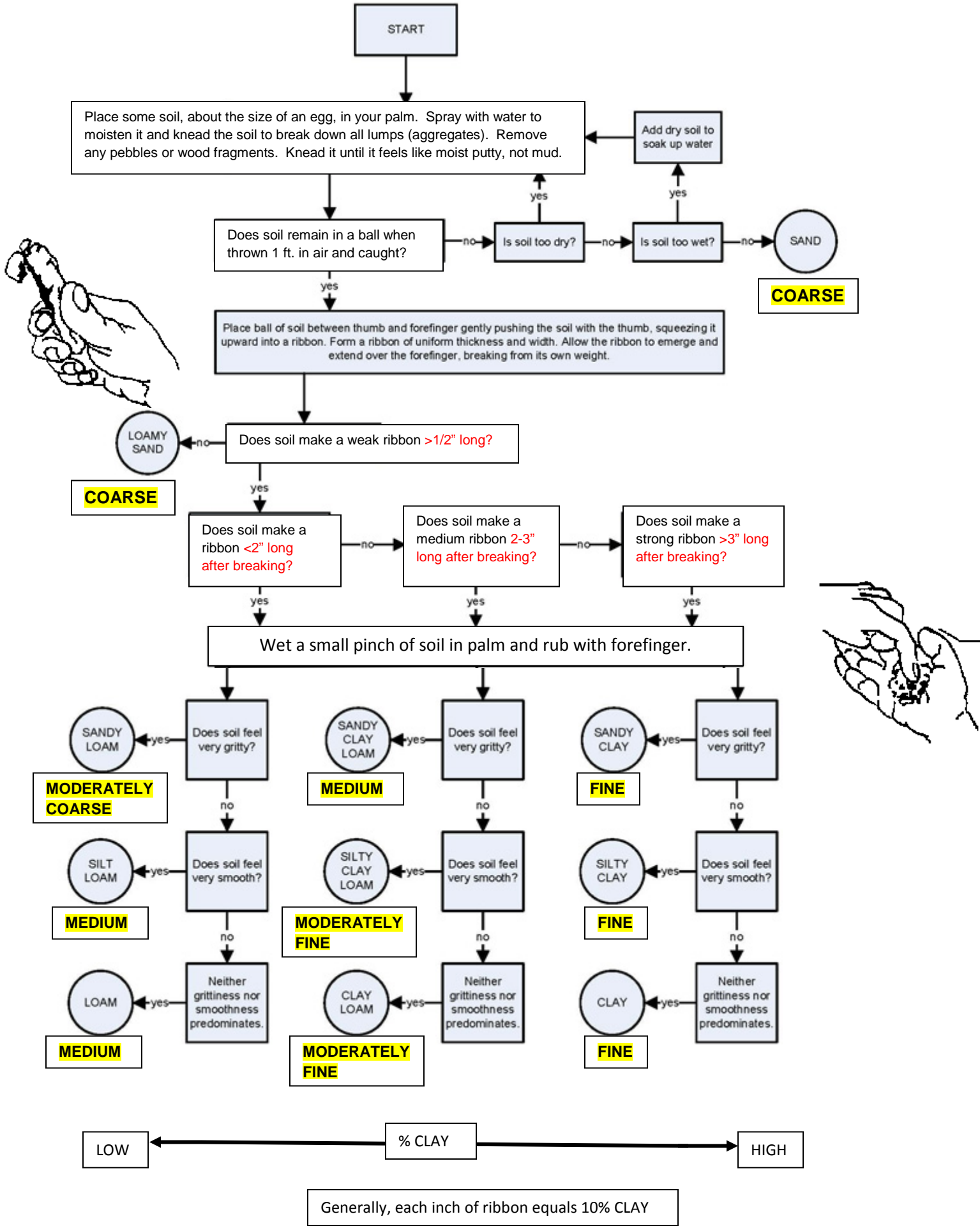


GUIDE FOR ESTIMATING SOIL TEXTURE BY FEEL



FIELD CRITERIA USED IN DETERMINING MAJOR TEXTURAL CLASSES

TEXTURE CLASS MAJOR (USDA)	FEEL MOIST	ABILITY TO		SOIL HANDS	STICKY	CONSISTENCY	
		FORM STABLE BALL	RIBBON OUT			MOIST	DRY
COARSE (sand)	very gritty	no	no	no	no	loose	loose
COARSE (loamy sand)	very gritty	yes	yes, very weak <1/2" long	yes slight	no	loose	loose
MOD. COARSE (sandy loam)	gritty	yes, easily deformed	yes, dull surface poorly formed	yes	no	very friable	soft
MEDIUM (loam)	slightly gritty	yes	yes, dull surface poorly formed	yes	yes, slight to moderate	friable	soft
MEDIUM (silt loam)	velvety	yes	yes, dull surface poor to well formed	yes	yes, slight to moderate	friable	soft
MOD. FINE (silty clay loam)	velvety & sticky	yes very stable	yes, shiny surface well formed	yes	yes	friable to firm	slightly hard
MOD. FINE (clay loam)	slightly gritty & sticky	yes very stable	yes, shiny surface well formed	yes	yes	firm	slightly hard to hard
MEDIUM (sandy clay loam)	very gritty & sticky	yes very stable	yes, shiny surface well formed	yes	yes	friable to firm	slightly hard to hard
FINE (sandy clay)	very gritty ext. sticky	yes very stable	yes, shiny surface well formed	yes	yes very	firm	hard to very hard
FINE (silty clay)	ext. sticky & very smooth	yes, very resistant to molding	yes, shiny surface well formed	yes	yes very	firm to ext. firm	hard to very hard
FINE (clay)	ext. sticky & very smooth	yes, very resistant to molding	yes, shiny surface well formed	yes	yes very	firm to ext. firm	hard to very hard

