



# Office of Institutional Effectiveness



University  
of Houston  
Clear Lake

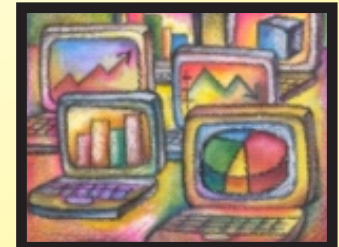
## Summer Term Comparison of Headcount and SCH by School: Summer 2009 through Summer 2013

Published August, 2015



### OIE Staff:

**Patricia Cuchens - Executive Director**  
**Miriam Qumsieh - Associate Director**  
**Henok Gebrehiwot - Research Analyst III**  
**Sophia Yan - Research Analyst III**  
**Debra Ross - Research Analyst II**  
**Mary Ballew - Research Analyst & Assessment Coordinator**  
**Ami Moller - Research Assessment Associate**



University of Houston-Clear Lake  
Office of Institutional Effectiveness



**Summer Term Comparison of Headcount and SCH by School: Summer 2009 through Summer 2013**

Data extracted using the certified CBM-001 merged to the Student Academic Plan (AcadProg used to identify school)

**Figure 1: Total Headcount - Graduate and Undergraduate Combined by School**

Headcount data are obtained using the **certified** cbm001 Student Report.

School	Summer 2009	Summer 2010	Summer 2011	Summer 2012	Summer 2013	1 Year Change		5 Year Change	
						Summ 2012 vs. Summ 2013 Chg.		Summ 2009 vs. Summ 2013 Chg.	
	count	count	count	count	count	difference	% change	difference	% change
BUS	1,110	1,273	1,343	1,355	1,298	-57	-4.2	188	16.9
HSH	1,117	1,262	1,308	1,284	1,256	-28	-2.2	139	12.4
SCE	432	525	592	664	626	-38	-5.7	194	44.9
SOE	1,108	1,122	999	936	876	-60	-6.4	-232	-20.9
UND	122	101	125	107	86	-21	-19.6	-36	-29.5
<b>Total</b>	<b>3,889</b>	<b>4,283</b>	<b>4,367</b>	<b>4,346</b>	<b>4,142</b>	<b>-204</b>	<b>-4.7</b>	<b>253</b>	<b>6.5</b>

**Figure 2: Total Headcount - Undergraduate by School**

School	Summer 2009	Summer 2010	Summer 2011	Summer 2012	Summer 2013	1 Year Change		5 Year Change	
						Summ 2012 vs. Summ 2013 Chg.		Summ 2009 vs. Summ 2013 Chg.	
	count	count	count	count	count	difference	% change	difference	% change
BUS	574	669	705	692	714	22	3.2	140	24.4
HSH	715	824	871	825	824	-1	-0.1	109	15.2
SCE	233	268	265	281	271	-10	-3.6	38	16.3
SOE	543	590	536	538	496	-42	-7.8	-47	-8.7
UND	122	101	125	107	86	-21	-19.6	-36	-29.5
<b>Total</b>	<b>2,187</b>	<b>2,452</b>	<b>2,502</b>	<b>2,443</b>	<b>2,391</b>	<b>-52</b>	<b>-2.1</b>	<b>204</b>	<b>9.3</b>

**Figure 3: Total Headcount - Graduate by School**

School	Summer 2009	Summer 2010	Summer 2011	Summer 2012	Summer 2013	1 Year Change		5 Year Change	
						Summ 2012 vs. Summ 2013 Chg.		Summ 2009 vs. Summ 2013 Chg.	
	count	count	count	count	count	difference	% change	difference	% change
BUS	536	604	638	663	584	-79	-11.9	48	9.0
HSH	402	438	437	459	432	-27	-5.9	30	7.5
SCE	199	257	327	383	355	-28	-7.3	156	78.4
SOE	565	532	463	398	380	-18	-4.5	-185	-32.7
UND	0	0	0	0	0	0	0.0	0	0.0
<b>Total</b>	<b>1,702</b>	<b>1,831</b>	<b>1,865</b>	<b>1,903</b>	<b>1,751</b>	<b>-152</b>	<b>-8.0</b>	<b>49</b>	<b>2.9</b>

SOE graduate total includes 49 Doctoral level students for Summ 2009; 57 for Summ 2010; 47 for Summ 2011; 70 for Summ 2012; and 62 for 2013. Prior to Summ 2006, graduates could be classified as non-degree seeking and/or certificate seekers. The THECB requires that all graduate students are reported with a valid degree program and are accepted into a graduate program to which they meet all of the academic requirements.

Figure 4: Total Semester Credit Hours - Graduate and Undergraduate Combined by School

School	Summer 2009	Summer 2010	Summer 2011	Summer 2012	Summer 2013	1 Year Change		5 Year Change	
						Summ 2012 vs. Summ 2013 Chg.		Summ 2009 vs. Summ 2013 Chg.	
	sum	sum	sum	sum	sum	difference	% change	difference	% change
BUS	5,728	6,807	7,404	7,259	6,995	-264	-3.6	1,267	22.1
HSH	7,060	8,334	8,021	8,125	7,562	-563	-6.9	502	7.1
SCE	2,277	2,847	3,051	3,515	3,873	358	10.2	1,596	70.1
SOE	6,172	6,399	5,400	4,640	4,626	-14	-0.3	-1,546	-25.0
Total	21,237	24,387	23,876	23,539	23,056	-483	-2.1	1,819	8.6

Figure 5: Total Semester Credit Hours - Undergraduate by School

School	Summer 2009	Summer 2010	Summer 2011	Summer 2012	Summer 2013	1 Year Change		5 Year Change	
						Summ 2012 vs. Summ 2013 Chg.		Summ 2009 vs. Summ 2013 Chg.	
	sum	sum	sum	sum	sum	difference	% change	difference	% change
BUS	2,928	3,511	3,947	3,775	3,766	-9	-0.2	838	28.6
HSH	5,478	6,525	6,317	6,169	5,864	-305	-4.9	386	7.0
SCE	1,445	1,821	1,615	1,847	2,041	194	10.5	596	41.2
SOE	2,644	3,013	2,576	2,211	2,139	-72	-3.3	-505	-19.1
Total	12,495	14,870	14,455	14,002	13,810	-192	-1.4	1,315	10.5

Figure 6: Total Semester Credit Hours - Graduate by School

School	Summer 2009	Summer 2010	Summer 2011	Summer 2012	Summer 2013	1 Year Change		5 Year Change	
						Summ 2012 vs. Summ 2013 Chg.		Summ 2009 vs. Summ 2013 Chg.	
	sum	sum	sum	sum	sum	difference	% change	difference	% change
BUS	2,800	3,296	3,457	3,484	3,229	-255	-7.3	429	15.3
HSH	1,582	1,809	1,704	1,956	1,698	-258	-13.2	116	7.3
SCE	832	1,026	1,436	1,668	1,832	164	9.8	1,000	120.2
SOE	3,528	3,386	2,824	2,429	2,487	58	2.4	-1,041	-29.5
Total	8,742	9,517	9,421	9,537	9,246	-291	-3.1	504	5.8

Total SCH - Total number of Semester Credit Hours (enrollment \* actual sch) - funded & non-funded

SOE graduate total includes 327 Doctoral level SCH for Summ 2009; 282 for Summ 2010; 240 for Summ 2011; 375 for Summ 2012; and 360 for Summ 2013.

These data were derived using the certified CBM-004 course report to the state - data may differ to other previously published reports.

Note that in accordance with THECB rules and regulations; Summer 2009 includes flex entry Spring 2009 8W2 SCH, Summer 2010 includes flex entry Spring 2010 8W2 SCH. Summer 2011 includes flex entry Spring 2011 8W2 SCH. Summer 2012 includes flex entry Spring 2012 8W2 SCH. Summer 2013 includes flex entry Spring 2013 8W2 SCH.

Figure 7: Graph of Total Headcount - Graduate and Undergraduate Combined by School

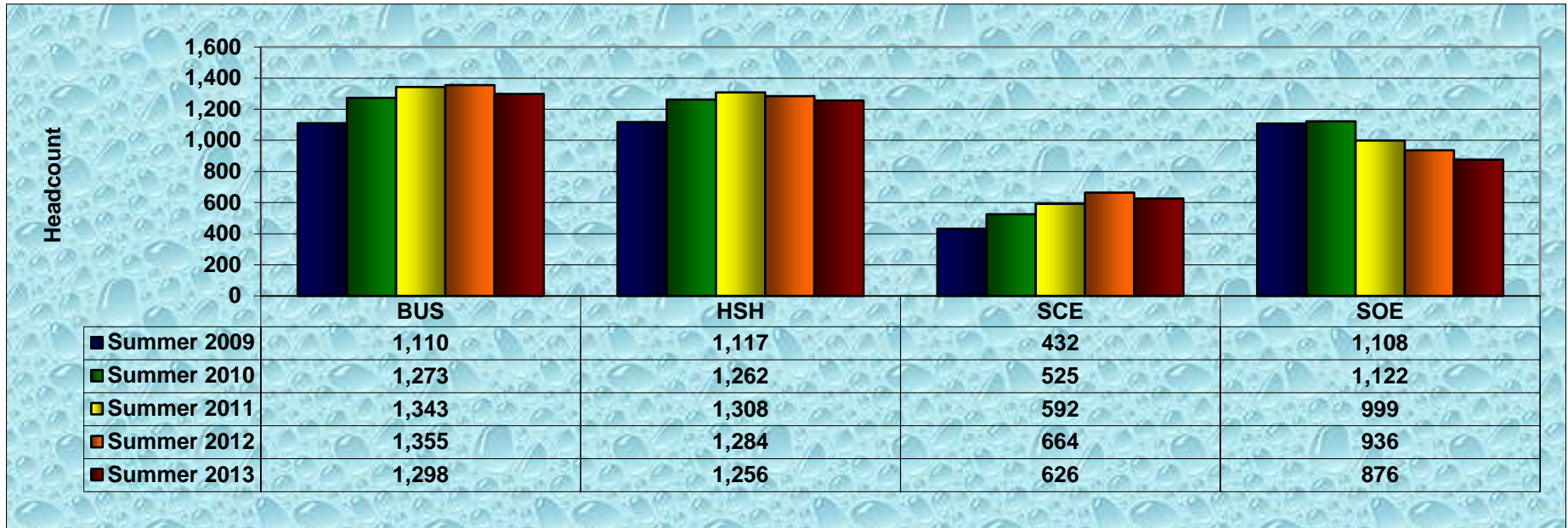


Figure 8: Graph of Total SCH - Graduate and Undergraduate Combined by School

