



Office of Institutional Effectiveness



University
of Houston
Clear Lake

Summer Term Comparison of Headcount and SCH by School: Summer 2010 through Summer 2014

Published August, 2015



OIE Staff:

Patricia Cuchens - Executive Director

Miriam Qumsieh - Associate Director

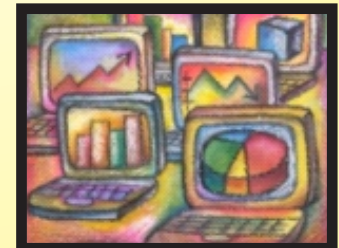
Henok Gebrehiwot - Research Analyst III

Sophia Yan - Research Analyst III

Debra Ross - Research Analyst II

Mary Ballew - Research Analyst & Assessment Coordinator

Ami Moller - Research Assessment Associate



University of Houston-Clear Lake
Office of Institutional Effectiveness



Summer Term Comparison of Headcount and SCH by School: Summer 2010 through Summer 2014

Data extracted using the certified CBM-001 merged to the Student Academic Plan (AcadProg used to identify school)

Figure 1: Total Headcount - Graduate and Undergraduate Combined by School

Headcount data are obtained using the **certified** cbm001 Student Report.

School	Summer 2010	Summer 2011	Summer 2012	Summer 2013	Summer 2014	1 Year Change		5 Year Change	
						Summ 2013 vs. Summ 2014 Chg.		Summ 2010 vs. Summ 2014 Chg.	
	count	count	count	count	count	difference	% change	difference	% change
BUS	1,273	1,343	1,355	1,298	1,261	-37	-2.9	-12	-0.9
HSH	1,262	1,308	1,284	1,256	1,199	-57	-4.5	-63	-5.0
SCE	525	592	664	626	919	293	46.8	394	75.0
SOE	1,122	999	936	876	851	-25	-2.9	-271	-24.2
UND	101	125	107	86	60	-26	-30.2	-41	-40.6
Total	4,283	4,367	4,346	4,142	4,290	148	3.6	7	0.2

Figure 2: Total Headcount - Undergraduate by School

School	Summer 2010	Summer 2011	Summer 2012	Summer 2013	Summer 2014	1 Year Change		5 Year Change	
						Summ 2013 vs. Summ 2014 Chg.		Summ 2010 vs. Summ 2014 Chg.	
	count	count	count	count	count	difference	% change	difference	% change
BUS	669	705	692	714	751	37	5.2	82	12.3
HSH	824	871	825	824	843	19	2.3	19	2.3
SCE	268	265	281	271	316	45	16.6	48	17.9
SOE	590	536	538	496	490	-6	-1.2	-100	-16.9
UND	101	125	107	86	60	-26	-30.2	-41	-40.6
Total	2,452	2,502	2,443	2,391	2,460	69	2.9	8	0.3

Figure 3: Total Headcount - Graduate by School

School	Summer 2010	Summer 2011	Summer 2012	Summer 2013	Summer 2014	1 Year Change		5 Year Change	
						Summ 2013 vs. Summ 2014 Chg.		Summ 2010 vs. Summ 2014 Chg.	
	count	count	count	count	count	difference	% change	difference	% change
BUS	604	638	663	584	510	-74	-12.7	-94	-15.6
HSH	438	437	459	432	356	-76	-17.6	-82	-18.7
SCE	257	327	383	355	603	248	69.9	346	134.6
SOE	532	463	398	380	361	-19	-5.0	-171	-32.1
UND	0	0	0	0	0	0	0.0	0	0.0
Total	1,831	1,865	1,903	1,751	1,830	79	4.5	-1	-0.1

SOE graduate total includes 57 Doctoral level students for Summ 2010; 47 for Summ 2011; 70 for Summ 2012; 62 for 2013 and 70 for Summ 2014 .
Prior to Summ 2006, graduates could be classified as non-degree seeking and/or certificate seekers. The THECB requires that all graduate students are reported with a valid degree program and are accepted into a graduate program to which they meet all of the academic requirements.

Figure 4: Total Semester Credit Hours - Graduate and Undergraduate Combined by School

School	Summer 2010	Summer 2011	Summer 2012	Summer 2013	Summer 2014	1 Year Change		5 Year Change	
						Summ 2013 vs. Summ 2014 Chg.		Summ 2010 vs. Summ 2014 Chg.	
	sum	sum	sum	sum	sum	difference	% change	difference	% change
BUS	6,807	7,404	7,259	6,995	6,837	-158	-2.3	30	0.4
HSH	8,334	8,021	8,125	7,562	7,656	94	1.2	-678	-8.1
SCE	2,847	3,051	3,515	3,873	5,864	1,991	51.4	3,017	106.0
SOE	6,399	5,400	4,640	4,626	4,214	-412	-8.9	-2,185	-34.1
Total	24,387	23,876	23,539	23,056	24,571	1,515	6.6	184	0.8

Figure 5: Total Semester Credit Hours - Undergraduate by School

School	Summer 2010	Summer 2011	Summer 2012	Summer 2013	Summer 2014	1 Year Change		5 Year Change	
						Summ 2013 vs. Summ 2014 Chg.		Summ 2010 vs. Summ 2014 Chg.	
	sum	sum	sum	sum	sum	difference	% change	difference	% change
BUS	3,511	3,947	3,775	3,766	3,933	167	4.4	422	12.0
HSH	6,525	6,317	6,169	5,864	6,393	529	9.0	-132	-2.0
SCE	1,821	1,615	1,847	2,041	2,233	192	9.4	412	22.6
SOE	3,013	2,576	2,211	2,139	2,104	-35	-1.6	-909	-30.2
Total	14,870	14,455	14,002	13,810	14,663	853	6.2	-207	-1.4

Figure 6: Total Semester Credit Hours - Graduate by School

School	Summer 2010	Summer 2011	Summer 2012	Summer 2013	Summer 2014	1 Year Change		5 Year Change	
						Summ 2013 vs. Summ 2014 Chg.		Summ 2010 vs. Summ 2014 Chg.	
	sum	sum	sum	sum	sum	difference	% change	difference	% change
BUS	3,296	3,457	3,484	3,229	2,904	-325	-10.1	-392	-11.9
HSH	1,809	1,704	1,956	1,698	1,263	-435	-25.6	-546	-30.2
SCE	1,026	1,436	1,668	1,832	3,631	1,799	98.2	2,605	253.9
SOE	3,386	2,824	2,429	2,487	2,110	-377	-15.2	-1,276	-37.7
Total	9,517	9,421	9,537	9,246	9,908	662	7.2	391	4.1

Total SCH - Total number of Semester Credit Hours (enrollment * actual sch) - funded & non-funded

SOE graduate total includes 282 Doctoral level SCH for Summ 2010; 240 for Summ 2011; 375 for Summ 2012; 360 for Summ 2013 and 318 for Summ 2014.

These data were derived using the certified CBM-004 course report to the state - data may differ to other previously published reports.

Note that in accordance with THECB rules and regulations; Summer 2010 includes flex entry Spring 2010 8W2 SCH. Summer 2011 includes flex entry Spring 2011 8W2 SCH. Summer 2012 includes flex entry Spring 2012 8W2 SCH. Summer 2013 includes flex entry Spring 2013 8W2 SCH. Summer 2014 includes flex entry Spring 2014 8W2 SCH.

Figure 7: Graph of Total Headcount - Graduate and Undergraduate Combined by School

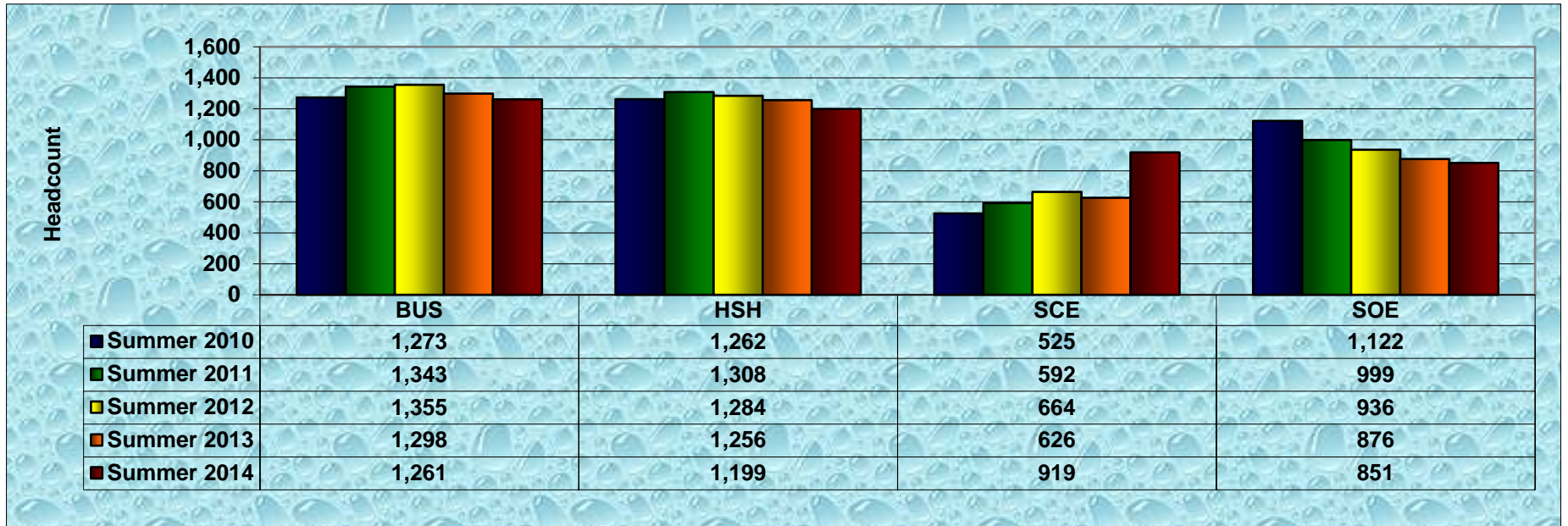


Figure 8: Graph of Total SCH - Graduate and Undergraduate Combined by School

