



# Office of Institutional Effectiveness



University  
of Houston  
Clear Lake

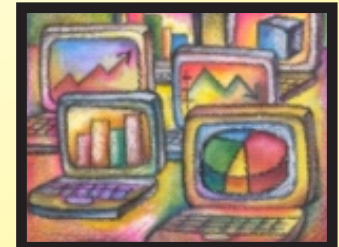
## Spring Term Comparison of Headcount and SCH by School: Spring 2011 through Spring 2015

Published August, 2015



### OIE Staff:

**Patricia Cuchens - Executive Director**  
**Miriam Qumsieh - Associate Director**  
**Henok Gebrehiwot - Research Analyst III**  
**Sophia Yan - Research Analyst III**  
**Debra Ross - Research Analyst II**  
**Mary Ballew - Research Analyst & Assessment Coordinator**  
**Ami Moller - Research Assessment Associate**



University of Houston-Clear Lake  
Office of Institutional Effectiveness



**Spring Term Comparison of Headcount and SCH by School: Spring 2011 thru Spring 2015**

Data extracted using the certified CBM-001 merged to the Student Academic Plan (AcadProg used to identify school)

**Figure 1: Total Headcount - Graduate and Undergraduate Combined by School**

Headcount data are obtained using the **certified** cbm001 Student Report.

School	Spring 2011	Spring 2012	Spring 2013	Spring 2014	Spring 2015	1 Year Change		5 Year Change	
						Spring 2014 vs. Spring 2015 Change		Spring 2011 vs. Spring 2015 Change	
	count	count	count	count	count	difference	% change	difference	% change
BUS	2,223	2,244	2,283	2,295	2,434	139	6.1	211	9.5
HSH	2,471	2,596	2,543	2,360	2,372	12	0.5	-99	-4.0
SCE	1,241	1,306	1,324	1,629	1,978	349	21.4	737	59.4
SOE	1,824	1,644	1,576	1,475	1,443	-32	-2.2	-381	-20.9
UND	222	182	188	129	104	-25	-19.4	-118	-53.2
<b>Total</b>	<b>7,981</b>	<b>7,972</b>	<b>7,914</b>	<b>7,888</b>	<b>8,331</b>	<b>443</b>	<b>5.6</b>	<b>350</b>	<b>4.4</b>

**Figure 2: Total Headcount - Undergraduate by School**

School	Spring 2011	Spring 2012	Spring 2013	Spring 2014	Spring 2015	1 Year Change		5 Year Change	
						Spring 2014 vs. Spring 2015 Change		Spring 2011 vs. Spring 2015 Change	
	count	count	count	count	count	difference	% change	difference	% change
BUS	1,236	1,247	1,334	1,406	1,556	150	10.7	320	25.9
HSH	1,577	1,655	1,623	1,562	1,677	115	7.4	100	6.3
SCE	632	638	682	737	959	222	30.1	327	51.7
SOE	1,096	1,052	996	948	946	-2	-0.2	-150	-13.7
UND	222	182	188	129	104	-25	-19.4	-118	-53.2
<b>Total</b>	<b>4,763</b>	<b>4,774</b>	<b>4,823</b>	<b>4,782</b>	<b>5,242</b>	<b>460</b>	<b>9.6</b>	<b>479</b>	<b>10.1</b>

**Figure 3: Total Headcount - Graduate by School**

School	Spring 2011	Spring 2012	Spring 2013	Spring 2014	Spring 2015	1 Year Change		5 Year Change	
						Spring 2014 vs. Spring 2015 Change		Spring 2011 vs. Spring 2015 Change	
	count	count	count	count	count	difference	% change	difference	% change
BUS	987	997	949	889	878	-11	-1.2	-109	-11.0
HSH	894	941	920	798	695	-103	-12.9	-199	-22.3
SCE	609	668	642	892	1,019	127	14.2	410	67.3
SOE	728	592	580	527	497	-30	-5.7	-231	-31.7
UND	0	0	0	0	0	0	n/a	n/a	n/a
<b>Total</b>	<b>3,218</b>	<b>3,198</b>	<b>3,091</b>	<b>3,106</b>	<b>3,089</b>	<b>-17</b>	<b>-0.5</b>	<b>-129</b>	<b>-4.0</b>

SOE graduate enrollment includes 70 Doctoral level students for Spring 2011; 95 for Spring 2012; 95 for Spring 2013; 94 for Spring 2014 and 106 for Spring 2015.

Prior to Summer 2006, graduates could be classified as non-degree seeking and/or certificate seekers. The THECB requires that all graduate students are reported with a valid degree program and are accepted into a graduate program to which they meet all of the academic requirements.

Figure 4: Total Semester Credit Hours - Graduate and Undergraduate Combined by School

School	Spring 2011	Spring 2012	Spring 2013	Spring 2014	Spring 2015	1 Year Change		5 Year Change	
						Spring 2014 vs. Spring 2015 Change		Spring 2011 vs. Spring 2015 Change	
	sum	sum	sum	sum	sum	difference	% change	difference	% change
BUS	18,832	19,394	19,531	19,821	19,818	-3	0.0	986	5.2
HSH	23,827	24,294	23,456	21,647	23,904	2,257	10.4	77	0.3
SCE	11,743	12,513	12,831	15,891	19,634	3,743	23.6	7,891	67.2
SOE	14,375	12,528	12,199	11,568	11,086	-482	-4.2	-3,289	-22.9
<b>Total</b>	<b>68,777</b>	<b>68,729</b>	<b>68,017</b>	<b>68,927</b>	<b>74,442</b>	<b>5,515</b>	<b>8.0</b>	<b>5,665</b>	<b>8.2</b>

Figure 5: Total Semester Credit Hours - Undergraduate by School

School	Spring 2011	Spring 2012	Spring 2013	Spring 2014	Spring 2015	1 Year Change		5 Year Change	
						Spring 2014 vs. Spring 2015 Change		Spring 2011 vs. Spring 2015 Change	
	sum	sum	sum	sum	sum	difference	% change	difference	% change
BUS	10,912	11,494	11,995	12,630	12,987	357	2.8	2,075	19.0
HSH	18,383	18,277	17,580	16,485	19,128	2,643	16.0	745	4.1
SCE	7,374	7,657	8,310	8,541	10,908	2,367	27.7	3,534	47.9
SOE	9,972	9,171	8,731	8,495	8,341	-154	-1.8	-1,631	-16.4
<b>Total</b>	<b>46,641</b>	<b>46,599</b>	<b>46,616</b>	<b>46,151</b>	<b>51,364</b>	<b>5,213</b>	<b>11.3</b>	<b>4,723</b>	<b>10.1</b>

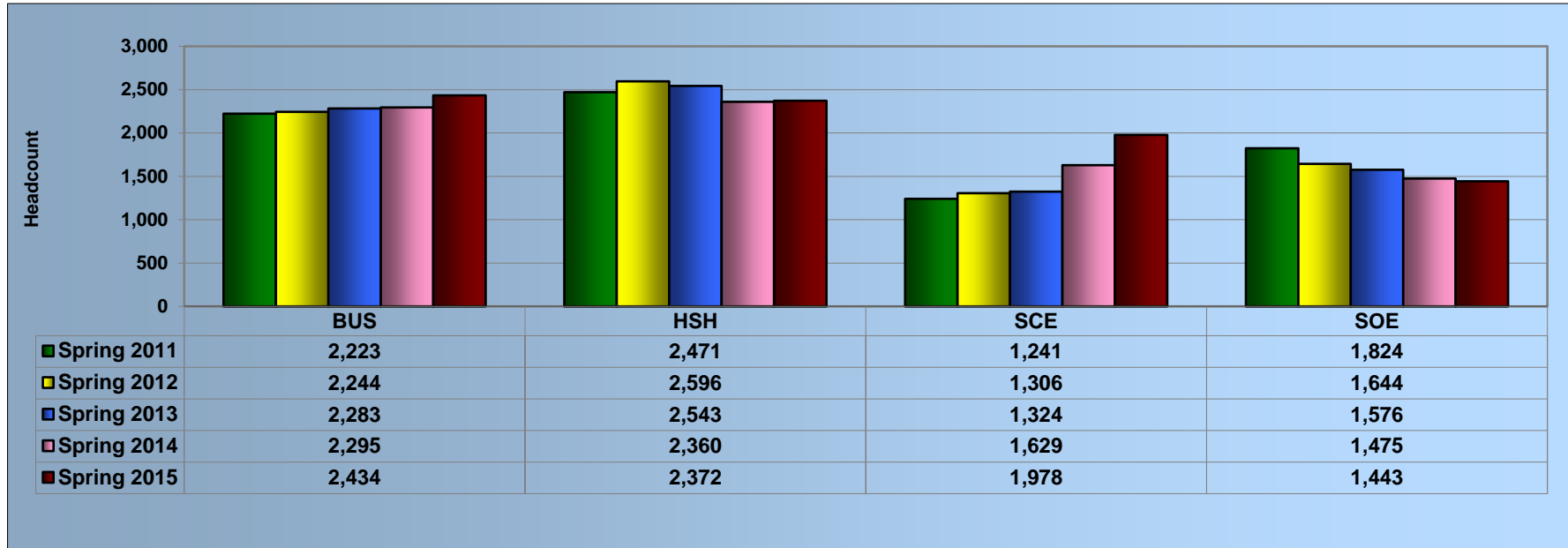
Figure 6: Total Semester Credit Hours - Graduate by School

School	Spring 2011	Spring 2012	Spring 2013	Spring 2014	Spring 2015	1 Year Change		5 Year Change	
						Spring 2014 vs. Spring 2015 Change		Spring 2011 vs. Spring 2015 Change	
	sum	sum	sum	sum	sum	difference	% change	difference	% change
BUS	7,920	7,900	7,536	7,191	6,831	-360	-5.0	-1,089	-13.7
HSH	5,444	6,017	5,876	5,162	4,776	-386	-7.5	-668	-12.3
SCE	4,369	4,856	4,521	7,350	8,726	1,376	18.7	4,357	99.7
SOE	4,403	3,357	3,468	3,073	2,745	-328	-10.7	-1,658	-37.7
<b>Total</b>	<b>22,136</b>	<b>22,130</b>	<b>21,401</b>	<b>22,776</b>	<b>23,078</b>	<b>302</b>	<b>1.3</b>	<b>942</b>	<b>4.3</b>

Total SCH - Total number of Semester Credit Hours (enrollment \* actual sch) - funded & non-funded  
SOE graduate total includes 471 Doctoral level SCH for spring 2011; 547 for spring 2012;  
633 for spring 2013; 645 for spring 2014 and 567 for spring 2015

These data were derived using the certified CBM-004 course report to the state - data may differ to other previously published reports.

**Figure 7: Graph of Total Headcount - Graduate and Undergraduate Combined by School**



**Figure 8: Graph of Total SCH - Graduate and Undergraduate Combined by School**

