



# Office of Institutional Effectiveness



University  
of Houston  
Clear Lake

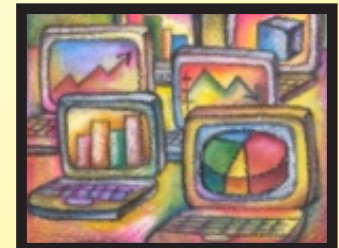
## Spring Term Comparison of Headcount and SCH by School: Spring 2010 through Spring 2014

Published August, 2015



### OIE Staff:

**Patricia Cuchens - Executive Director**  
**Miriam Qumsieh - Associate Director**  
**Henok Gebrehiwot - Research Analyst III**  
**Sophia Yan - Research Analyst III**  
**Debra Ross - Research Analyst II**  
**Mary Ballew - Research Analyst & Assessment Coordinator**  
**Ami Moller - Research Assessment Associate**



University of Houston-Clear Lake  
Office of Institutional Effectiveness



**Spring Term Comparison of Headcount and SCH by School: Spring 2010 thru Spring 2014**

Data extracted using the certified CBM-001 merged to the Student Academic Plan (AcadProg used to identify school)

**Figure 1: Total Headcount - Graduate and Undergraduate Combined by School**

Headcount data are obtained using the certified cbm001 Student Report.

School	Spring 2010	Spring 2011	Spring 2012	Spring 2013	Spring 2014	1 Year Change		5 Year Change	
						Spring 2013 vs. Spring 2014 Change		Spring 2010 vs. Spring 2014 Change	
	count	count	count	count	count	difference	% change	difference	% change
BUS	2,147	2,223	2,244	2,283	2,295	12	0.5	148	6.9
HSH	2,355	2,471	2,596	2,543	2,360	-183	-7.2	5	0.2
SCE	1,126	1,241	1,306	1,324	1,629	305	23.0	503	44.7
SOE	1,826	1,824	1,644	1,576	1,475	-101	-6.4	-351	-19.2
UND	224	222	182	188	129	-59	-31.4	-95	-42.4
<b>Total</b>	<b>7,678</b>	<b>7,981</b>	<b>7,972</b>	<b>7,914</b>	<b>7,888</b>	<b>-26</b>	<b>-0.3</b>	<b>210</b>	<b>2.7</b>

**Figure 2: Total Headcount - Undergraduate by School**

School	Spring 2010	Spring 2011	Spring 2012	Spring 2013	Spring 2014	1 Year Change		5 Year Change	
						Spring 2013 vs. Spring 2014 Change		Spring 2010 vs. Spring 2014 Change	
	count	count	count	count	count	difference	% change	difference	% change
BUS	1,183	1,236	1,247	1,334	1,406	72	5.4	223	18.9
HSH	1,491	1,577	1,655	1,623	1,562	-61	-3.8	71	4.8
SCE	549	632	638	682	737	55	8.1	188	34.2
SOE	1,054	1,096	1,052	996	948	-48	-4.8	-106	-10.1
UND	224	222	182	188	129	-59	-31.4	-95	-42.4
<b>Total</b>	<b>4,501</b>	<b>4,763</b>	<b>4,774</b>	<b>4,823</b>	<b>4,782</b>	<b>-41</b>	<b>-0.9</b>	<b>281</b>	<b>6.2</b>

**Figure 3: Total Headcount - Graduate by School**

School	Spring 2010	Spring 2011	Spring 2012	Spring 2013	Spring 2014	1 Year Change		5 Year Change	
						Spring 2013 vs. Spring 2014 Change		Spring 2010 vs. Spring 2014 Change	
	count	count	count	count	count	difference	% change	difference	% change
BUS	964	987	997	949	889	-60	-6.3	-75	-7.8
HSH	864	894	941	920	798	-122	-13.3	-66	-7.6
SCE	577	609	668	642	892	250	38.9	315	54.6
SOE	772	728	592	580	527	-53	-9.1	-245	-31.7
UND	0	0	0	0	0	0	n/a	n/a	n/a
<b>Total</b>	<b>3,177</b>	<b>3,218</b>	<b>3,198</b>	<b>3,091</b>	<b>3,106</b>	<b>15</b>	<b>0.5</b>	<b>-71</b>	<b>-2.2</b>

SOE graduate enrollment includes 68 Doctoral level students for Spring 2010; 70 for Spring 2011; 95 for Spring 2012; 95 for Spring 2013 and 94 for Spring 2014.

Prior to Summer 2006, graduates could be classified as non-degree seeking and/or certificate seekers. The THECB requires that all graduate students are reported with a valid degree program and are accepted into a graduate program to which they meet all of the academic requirements.

Figure 4: Total Semester Credit Hours - Graduate and Undergraduate Combined by School

School	Spring 2010	Spring 2011	Spring 2012	Spring 2013	Spring 2014	1 Year Change		5 Year Change	
						Spring 2013 vs. Spring 2014 Change		Spring 2010 vs. Spring 2014 Change	
	sum	sum	sum	sum	sum	difference	% change	difference	% change
BUS	18,387	18,832	19,394	19,531	19,821	290	1.5	1,434	7.8
HSH	22,653	23,827	24,294	23,456	21,647	-1,809	-7.7	-1,006	-4.4
SCE	10,367	11,743	12,513	12,831	15,891	3,060	23.8	5,524	53.3
SOE	14,124	14,375	12,528	12,199	11,568	-631	-5.2	-2,556	-18.1
Total	65,531	68,777	68,729	68,017	68,927	910	1.3	3,396	5.2

Figure 5: Total Semester Credit Hours - Undergraduate by School

School	Spring 2010	Spring 2011	Spring 2012	Spring 2013	Spring 2014	1 Year Change		5 Year Change	
						Spring 2013 vs. Spring 2014 Change		Spring 2010 vs. Spring 2014 Change	
	sum	sum	sum	sum	sum	difference	% change	difference	% change
BUS	10,530	10,912	11,494	11,995	12,630	635	5.3	2,100	19.9
HSH	17,028	18,383	18,277	17,580	16,485	-1,095	-6.2	-543	-3.2
SCE	6,497	7,374	7,657	8,310	8,541	231	2.8	2,044	31.5
SOE	9,471	9,972	9,171	8,731	8,495	-236	-2.7	-976	-10.3
Total	43,526	46,641	46,599	46,616	46,151	-465	-1.0	2,625	6.0

Figure 6: Total Semester Credit Hours - Graduate by School

School	Spring 2010	Spring 2011	Spring 2012	Spring 2013	Spring 2014	1 Year Change		5 Year Change	
						Spring 2013 vs. Spring 2014 Change		Spring 2010 vs. Spring 2014 Change	
	sum	sum	sum	sum	sum	difference	% change	difference	% change
BUS	7,857	7,920	7,900	7,536	7,191	-345	-4.6	-666	-8.5
HSH	5,625	5,444	6,017	5,876	5,162	-714	-12.2	-463	-8.2
SCE	3,870	4,369	4,856	4,521	7,350	2,829	62.6	3,480	89.9
SOE	4,653	4,403	3,357	3,468	3,073	-395	-11.4	-1,580	-34.0
Total	22,005	22,136	22,130	21,401	22,776	1,375	6.4	771	3.5

Total SCH - Total number of Semester Credit Hours (enrollment \* actual sch) - funded & non-funded  
 SOE graduate total includes 459 Doctoral level SCH for spring 2010; 471 spring 2011; 547 for spring 2012;  
 633 for spring 2013 and 645 for spring 2014.

These data were derived using the certified CBM-004 course report to the state - data may differ to other previously published reports.

Figure 7: Graph of Total Headcount - Graduate and Undergraduate Combined by School

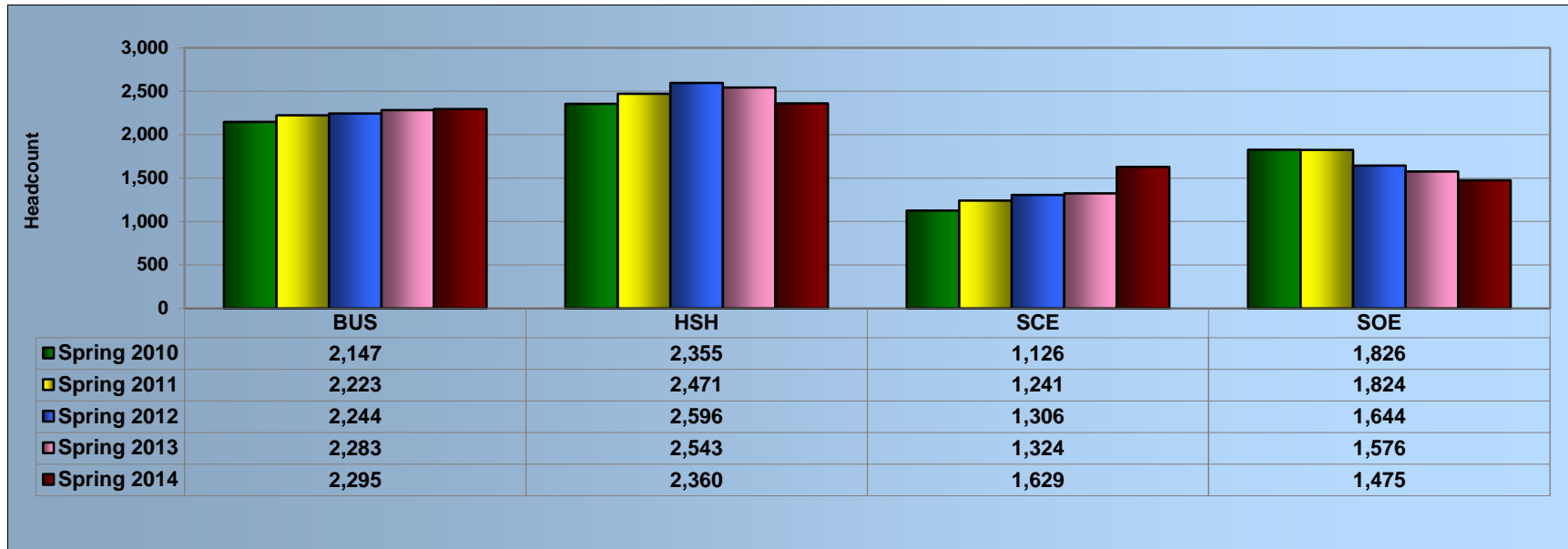


Figure 8: Graph of Total SCH - Graduate and Undergraduate Combined by School

