



Office of Institutional Effectiveness



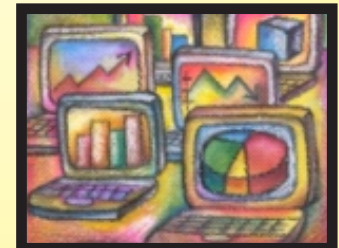
University
of Houston
Clear Lake

Fall Term Comparison of Headcount and SCH by School: Fall 2009 through Fall 2013

Published May 2014



Report prepared by:
Kevin Barlow - Executive Director
Miriam Qumsieh - Assistant Director
Sophia Yan - Research Analyst III
Debra Ross - Research Analyst II
Mary Ballew - Research Analyst & Assessment Coordinator
Ami Moller - Research Assessment Associate



University of Houston - Clear Lake
Office of Institutional Research



Fall Term Comparison of Headcount and SCH by School: Fall 2009 thru Fall 2013

Data extracted using the certified CBM-001 (student report) merged to the Student Academic Plan (AcadProg used to identify school)

Updated May, 2014

Figure 1: Total Headcount - Graduate and Undergraduate Combined by School

Headcount data are obtained using the certified cbm001 Student Report.

School	Fall 2009	Fall 2010	Fall 2011	Fall 2012	Fall 2013	1 Year Change		5 Year Change	
						Fall 2012 vs. Fall 2013	Fall 2009 vs. Fall 2013 Change	difference	% change
	count	count	count	count	count	difference	% change	difference	% change
BUS	2,152	2,260	2,282	2,339	2,367	28	1.2	215	10.0
HSH	2,329	2,505	2,635	2,671	2,493	-178	-6.7	164	7.0
SCE	1,113	1,231	1,303	1,306	1,568	262	20.1	455	40.9
SOE	1,822	1,881	1,726	1,633	1,573	-60	-3.7	-249	-13.7
UND	227	222	239	204	163	-41	-20.1	-64	-28.2
Total	7,643	8,099	8,185	8,153	8,164	11	0.1	521	6.8

Figure 2: Total Headcount - Undergraduate by School

School	Fall 2009	Fall 2010	Fall 2011	Fall 2012	Fall 2013	1 Year Change		5 Year Change	
						Fall 2012 vs. Fall 2013 Change	Fall 2009 vs. Fall 2013 Change	difference	% change
	count	count	count	count	count	difference	% change	difference	% change
BUS	1,164	1,257	1,269	1,328	1,423	95	7.2	259	22.3
HSH	1,449	1,586	1,665	1,691	1,652	-39	-2.3	203	14.0
SCE	554	605	653	672	729	57	8.5	175	31.6
SOE	1,056	1,130	1,085	1,058	1,003	-55	-5.2	-53	-5.0
UND	227	222	239	204	163	-41	-20.1	-64	-28.2
Total	4,450	4,800	4,911	4,953	4,970	17	0.3	520	11.7

Figure 3: Total Headcount - Graduate by School

School	Fall 2009	Fall 2010	Fall 2011	Fall 2012	Fall 2013	1 Year Change		5 Year Change	
						Fall 2012 vs. Fall 2013 Change	Fall 2009 vs. Fall 2013 Change	difference	% change
	count	count	count	count	count	difference	% change	difference	% change
BUS	988	1,003	1,013	1,011	944	-67	-6.6	-44	-4.5
HSH	880	919	970	980	841	-139	-14.2	-39	-4.4
SCE	559	626	650	634	839	205	32.3	280	50.1
SOE	766	751	641	575	570	-5	-0.9	-196	-25.6
Total	3,193	3,299	3,274	3,200	3,194	-6	-0.2	1	0.0

SOE graduate total includes 54 Doctoral level students for Fall 2008; 72 for Fall 2009; 78 for Fall 2010; 76 for Fall 2011; 98 for Fall 2012 and 75 for Fall 2013.

Prior to Summer 2006, graduates could be classified as non-degree seeking and/or certificate seekers. The THECB requires that all graduate students are reported with a valid degree program and are accepted into a graduate program to which they meet all of the academic requirements.

Total SCH include funded and non-funded figures

Please note that for the base year comparison report only funded SCH were used



Figure 4: Total Semester Credit Hours - Graduate and Undergraduate Combined by School

School	Fall 2009	Fall 2010	Fall 2011	Fall 2012	Fall 2013	1 Year Change		5 Year Change	
						Fall 2012 vs. Fall 2013 Change	Fall 2009 vs. Fall 2013 Change	Fall 2009 vs. Fall 2013 Change	Fall 2009 vs. Fall 2013 Change
	count	count	count	count	count	difference	% change	difference	% change
BUS	18,413	19,086	19,579	19,713	20,569	856	4.3	2,156	11.7
HSH	22,089	23,198	24,893	24,736	22,818	-1,918	-7.8	729	3.3
SCE	10,209	11,455	11,938	12,351	14,924	2,573	20.8	4,715	46.2
SOE	13,970	14,897	13,445	12,455	12,348	-107	-0.9	-1,622	-11.6
Total	64,681	68,636	69,855	69,255	70,659	1,404	2.0	5,978	9.2

Figure 5: Total Semester Credit Hours - Undergraduate by School

School	Fall 2009	Fall 2010	Fall 2011	Fall 2012	Fall 2013	1 Year Change		5 Year Change	
						Fall 2012 vs. Fall 2013 Change	Fall 2009 vs. Fall 2013 Change	Fall 2009 vs. Fall 2013 Change	Fall 2009 vs. Fall 2013 Change
	count	count	count	count	count	difference	% change	difference	% change
BUS	10,539	11,062	11,482	11,824	12,970	1,146	9.7	2,431	23.1
HSH	16,563	17,528	18,586	18,485	17,461	-1,024	-5.5	898	5.4
SCE	6,485	6,890	7,019	7,554	8,217	663	8.8	1,732	26.7
SOE	9,476	10,587	9,827	9,076	9,016	-60	-0.7	-460	-4.9
Total	43,063	46,067	46,914	46,939	47,664	725	1.5	4,601	10.7

Figure 6: Total Semester Credit Hours - Graduate by School

School	Fall 2009	Fall 2010	Fall 2011	Fall 2012	Fall 2013	1 Year Change		5 Year Change	
						Fall 2012 vs. Fall 2013 Change	Fall 2009 vs. Fall 2013 Change	Fall 2009 vs. Fall 2013 Change	Fall 2009 vs. Fall 2013 Change
	count	count	count	count	count	difference	% change	difference	% change
BUS	7,874	8,024	8,097	7,889	7,599	-290	-3.7	-275	-3.5
HSH	5,526	5,670	6,307	6,251	5,357	-894	-14.3	-169	-3.1
SCE	3,724	4,565	4,919	4,797	6,707	1,910	39.8	2,983	80.1
SOE	4,494	4,310	3,618	3,379	3,332	-47	-1.4	-1,162	-25.9
Total	21,618	22,569	22,941	22,316	22,995	679	3.0	1,377	6.4

Total SCH - Total number of Semester Credit Hours (enrollment * actual sch) - funded & non-funded

A total of 477 SCH were generated in SOE for Doctoral students for Fall 2008. A total of 480 SCH were generated in SOE for Doctoral students for Fall 2009.

A total of 504 SCH were generated in SOE for Doctoral students for Fall 2010. A total of 444 SCH were generated in SOE for Doctoral students for Fall 2011.

A total of 654 SCH were generated in SOE for Doctoral students for Fall 2012.

A total of 672 SCH were generated in SOE for Doctoral students for Fall 2013.

These data were derived using the certified CBM-004

course report to the state - data may differ to other

previously published reports.

CB process removes 8 week 2 courses for fall 2013:

In compliance with THECB rules and regulations, Students enrolled in classes organized after the official census date should be included in the data submitted in the semester following. SCH for 8wk2 will be reported with spring 2014 data. Note that if 8wk2 students are enrolled in other counted courses, the HC and SCH will be included - only 8wk2 excluded. Summer 2013 3w3 included in Fall 2013 if enrollments exist for session.

Figure 7: Graph of Total Headcount - Graduate and Undergraduate Combined by School

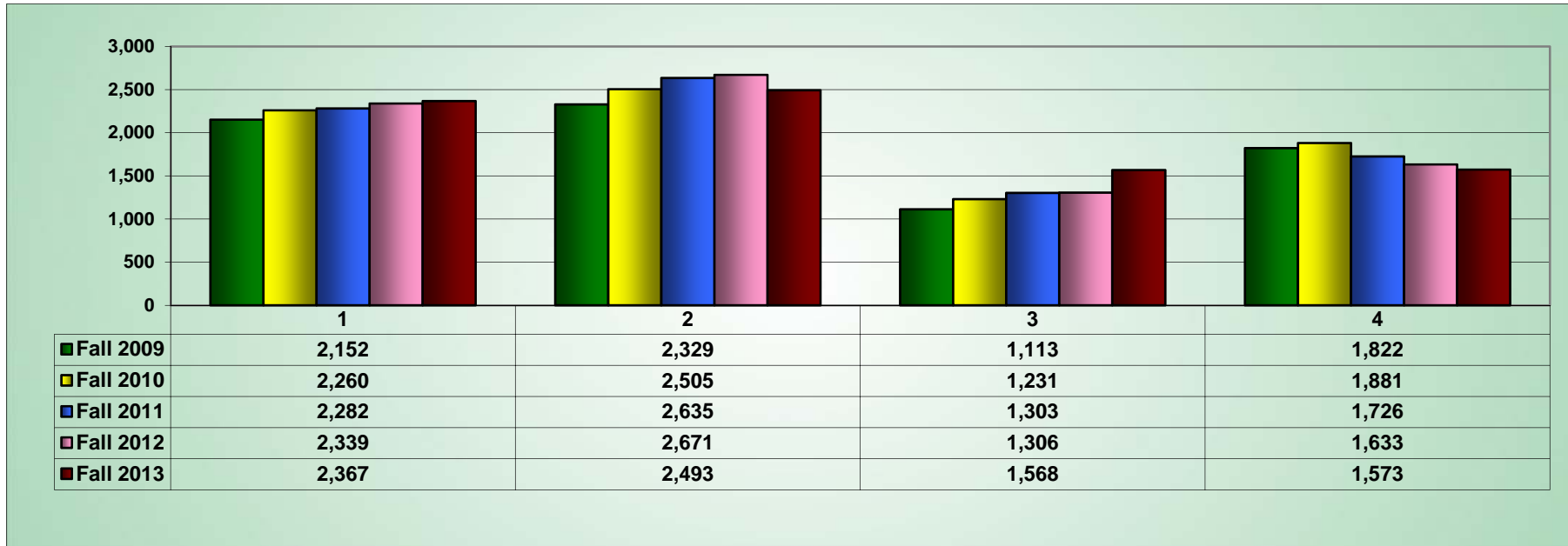


Figure 8: Graph of Total SCH - Graduate and Undergraduate Combined by School

