



# Office of Institutional Research



University  
of Houston  
Clear Lake

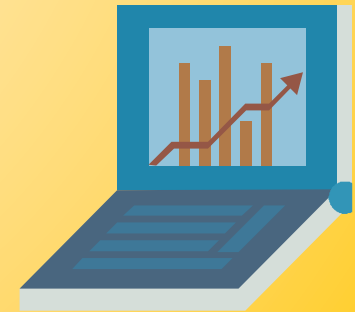
## Fall Term Comparison of Headcount and SCH by School: Fall 2007 thru Fall 2011

Published November 2011

---

### OIR Staff:

Peggy Johnson - Associate Director  
Miriam Qumsieh - Senior Institutional Research Analyst  
Pablo Salinas - Research Analyst II  
Mary Ballew - Research Analyst & Assessment Coordinator



University of Houston - Clear Lake

Office of Institutional Research

Fall Term Comparison of Headcount and SCH by School: Fall 2007 thru Fall 2011

Data extracted using the certified CBM-001 (student report) merged to the Student Academic Plan (AcadProg used to identify school)



Created November 16, 2011

Figure 1: Total Headcount - Graduate and Undergraduate Combined by School

Headcount data are obtained using the certified cbm001 Student Report.

School	Fall 2007	Fall 2008	Fall 2009	Fall 2010	Fall 2011	1 Year Change		5 Year Change	
						Fall 2010 vs. Fall 2011 Change	Fall 2007 vs. Fall 2011 Change	Fall 2010 vs. Fall 2011 Change	Fall 2007 vs. Fall 2011 Change
	count	count	count	count	count	difference	% change	difference	% change
BUS	2,023	2,089	2,152	2,260	2,282	22	1.0	259	12.8
HSH	2,209	2,228	2,329	2,505	2,635	130	5.2	426	19.3
SCE	956	1,085	1,113	1,231	1,303	72	5.8	347	36.3
SOE	2,157	2,037	1,822	1,881	1,726	-155	-8.2	-431	-20.0
UND	177	219	227	222	239	17	7.7	62	35.0
Total	7,522	7,658	7,643	8,099	8,185	86	1.1	663	8.8

Figure 2: Total Headcount - Undergraduate by School

School	Fall 2007	Fall 2008	Fall 2009	Fall 2010	Fall 2011	1 Year Change		5 Year Change	
						Fall 2010 vs. Fall 2011 Change	Fall 2007 vs. Fall 2011 Change	Fall 2010 vs. Fall 2011 Change	Fall 2007 vs. Fall 2011 Change
	count	count	count	count	count	difference	% change	difference	% change
BUS	1,189	1,189	1,164	1,257	1,269	12	1.0	80	6.7
HSH	1,311	1,362	1,449	1,586	1,665	79	5.0	354	27.0
SCE	525	543	554	605	653	48	7.9	128	24.4
SOE	1,080	1,027	1,056	1,130	1,085	-45	-4.0	5	0.5
UND	177	219	227	222	239	17	7.7	62	35.0
Total	4,282	4,340	4,450	4,800	4,911	111	2.3	629	14.7

Figure 3: Total Headcount - Graduate by School

School	Fall 2007	Fall 2008	Fall 2009	Fall 2010	Fall 2011	1 Year Change		5 Year Change	
						Fall 2010 vs. Fall 2011 Change	Fall 2007 vs. Fall 2011 Change	Fall 2010 vs. Fall 2011 Change	Fall 2007 vs. Fall 2011 Change
	count	count	count	count	count	difference	% change	difference	% change
BUS	834	900	988	1,003	1,013	10	1.0	179	21.5
HSH	898	866	880	919	970	51	5.5	72	8.0
SCE	431	542	559	626	650	24	3.8	219	50.8
SOE	1,077	1,010	766	751	641	-110	-14.6	-436	-40.5
Total	3,240	3,318	3,193	3,299	3,274	-25	-0.8	34	1.0

SOE graduate total includes 35 Doctoral level students for Fall 2007 and 54 Doctoral level students for Fall 2008.

SOE includes a total of 72 Doctoral level students for Fall 2009 and 78 Doctoral level students for Fall 2010 and 76 for Fall 2011.

Prior to Summer 2006, graduates could be classified as non-degree seeking and/or certificate seekers. The THECB requires that all graduate students are reported with a valid degree program and are accepted into a graduate program to which they meet all of the academic requirements.

Effective Fall 2008 - Political Science Majors (CIP - 45100100) were transferred from BUS to HSH. There are 10 for Fall 2008.

**Total SCH include funded and non-funded figures**

Please note that for the base year comparison report only funded SCH were used



**Figure 4: Total Semester Credit Hours - Graduate and Undergraduate Combined by School**

School	Fall 2007	Fall 2008	Fall 2009	Fall 2010	Fall 2011	1 Year Change		5 Year Change	
						Fall 2010 vs. Fall 2011 Change	Fall 2007 vs. Fall 2011 Change	Fall 2010 vs. Fall 2011 Change	Fall 2007 vs. Fall 2011 Change
	count	count	count	count	count	difference	% change	difference	% change
BUS	17,374	18,130	18,413	19,086	19,579	493	2.6	2,205	12.7
HSH	21,623	21,084	22,089	23,198	24,893	1,695	7.3	3,270	15.1
SCE	8,832	9,905	10,209	11,455	11,938	483	4.2	3,106	35.2
SOE	15,241	14,703	13,970	14,897	13,445	-1,452	-9.7	-1,796	-11.8
<b>Total</b>	<b>63,070</b>	<b>63,822</b>	<b>64,681</b>	<b>68,636</b>	<b>69,855</b>	<b>1,219</b>	<b>1.8</b>	<b>6,785</b>	<b>10.8</b>

**Figure 5: Total Semester Credit Hours - Undergraduate by School**

School	Fall 2007	Fall 2008	Fall 2009	Fall 2010	Fall 2011	1 Year Change		5 Year Change	
						Fall 2010 vs. Fall 2011 Change	Fall 2007 vs. Fall 2011 Change	Fall 2010 vs. Fall 2011 Change	Fall 2007 vs. Fall 2011 Change
	count	count	count	count	count	difference	% change	difference	% change
BUS	10,816	10,827	10,539	11,062	11,482	420	3.8	666	6.2
HSH	15,808	15,565	16,563	17,528	18,586	1,058	6.0	2,778	17.6
SCE	6,034	6,217	6,485	6,890	7,019	129	1.9	985	16.3
SOE	8,644	8,454	9,476	10,587	9,827	-760	-7.2	1,183	13.7
<b>Total</b>	<b>41,302</b>	<b>41,063</b>	<b>43,063</b>	<b>46,067</b>	<b>46,914</b>	<b>847</b>	<b>1.8</b>	<b>5,612</b>	<b>13.6</b>

**Figure 6: Total Semester Credit Hours - Graduate by School**

School	Fall 2007	Fall 2008	Fall 2009	Fall 2010	Fall 2011	1 Year Change		5 Year Change	
						Fall 2010 vs. Fall 2011 Change	Fall 2007 vs. Fall 2011 Change	Fall 2010 vs. Fall 2011 Change	Fall 2007 vs. Fall 2011 Change
	count	count	count	count	count	difference	% change	difference	% change
BUS	6,558	7,303	7,874	8,024	8,097	73	0.9	1,539	23.5
HSH	5,815	5,519	5,526	5,670	6,307	637	11.2	492	8.5
SCE	2,798	3,688	3,724	4,565	4,919	354	7.8	2,121	75.8
SOE	6,597	6,249	4,494	4,310	3,618	-692	-16.1	-2,979	-45.2
<b>Total</b>	<b>21,768</b>	<b>22,759</b>	<b>21,618</b>	<b>22,569</b>	<b>22,941</b>	<b>372</b>	<b>1.6</b>	<b>1,173</b>	<b>5.4</b>

Total SCH - Total number of Semester Credit Hours (enrollment \* actual sch) - funded & non-funded

A total of 255 SCH were generated in SOE for Doctoral students for Fall 2007 and a total of 477 SCH were generated in SOE for Doctoral students for Fall 2008.

A total of 480 SCH were generated in SOE for Doctoral students for Fall 2009. A total of 504 SCH were generated in SOE for Doctoral students for Fall 2010.

A total of 444 SCH were generated in SOE for Doctoral students for Fall 2011.

These data were derived using the certified CBM-004 course report to the state - data may differ to other previously published reports.

**CB process removes 8 week 2 courses for fall 2011:**

In compliance with THECB rules and regulations, Students enrolled in classes organized after the official census date should be included in the data submitted in the semester following. SCH for 8wk2 will be reported with spring 2012 data. Note that if 8wk2 students are enrolled in other counted courses, the HC and SCH will be included - only 8wk2 excluded. Summer 2011 3w3 included in Fall 2011 if enrollments exist for session.

Figure 7: Graph of Total Headcount - Graduate and Undergraduate Combined by School

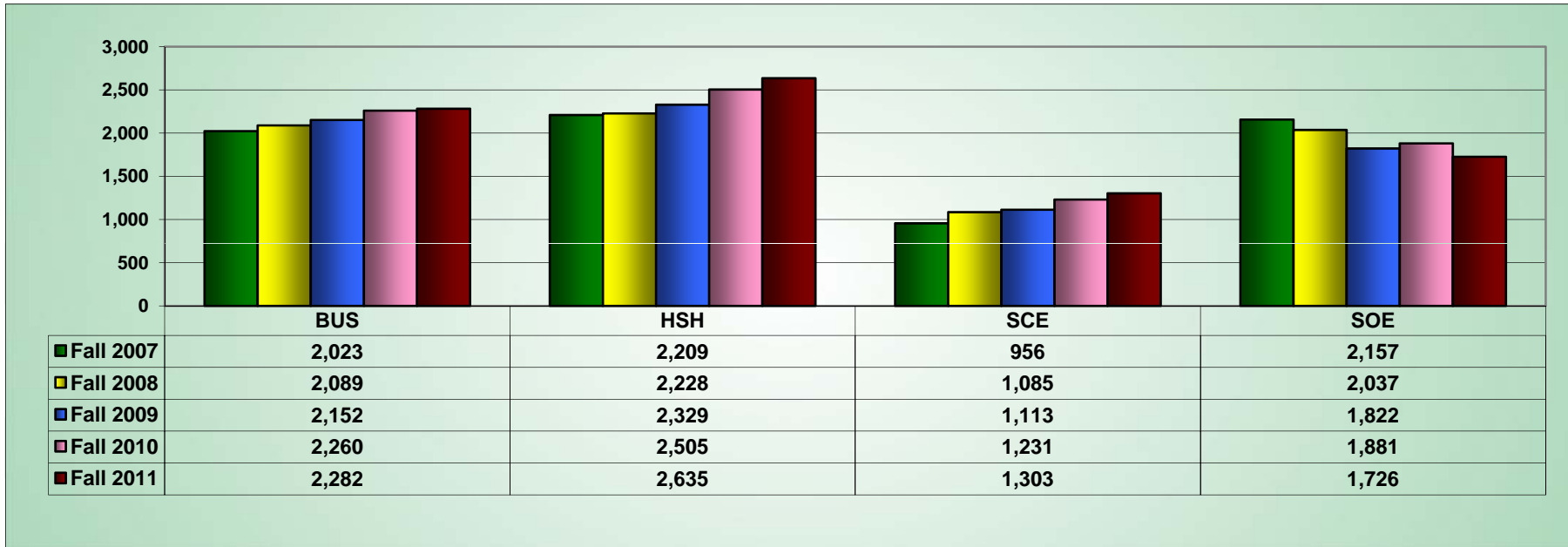


Figure 8: Graph of Total SCH - Graduate and Undergraduate Combined by School

