



# Office of Institutional Effectiveness



University  
of Houston  
Clear Lake

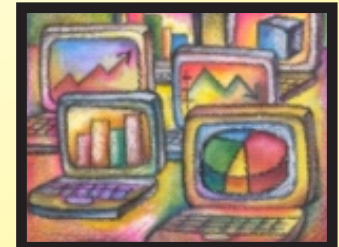
## Fall Term Comparison of Headcount and SCH by School: Fall 2010 through Fall 2014

Published August, 2015



### OIE Staff:

**Patricia Cuchens - Executive Director**  
**Miriam Qumsieh - Associate Director**  
**Henok Gebrehiwot - Research Analyst III**  
**Sophia Yan - Research Analyst III**  
**Debra Ross - Research Analyst II**  
**Mary Ballew - Research Analyst & Assessment Coordinator**  
**Ami Moller - Research Assessment Associate**



University of Houston - Clear Lake  
Office of Institutional Effectiveness



Fall Term Comparison of Headcount and SCH by School: Fall 2010 thru Fall 2014

Data extracted using the certified CBM-001 (student report) merged to the Student Academic Plan (AcadProg used to identify school)

Figure 1: Total Headcount - Graduate and Undergraduate Combined by School

Headcount data are obtained using the **certified** cbm001 Student Report.

School	Fall 2010	Fall 2011	Fall 2012	Fall 2013	Fall 2014	1 Year Change		5 Year Change	
						Fall 2013 vs. Fall 2014		Fall 2010 vs. Fall 2014 Change	
	count	count	count	count	count	difference	% change	difference	% change
BUS	2,260	2,282	2,339	2,367	2,546	179	7.6	286	12.7
HSH	2,505	2,635	2,671	2,493	2,463	-30	-1.2	-42	-1.7
SCE	1,231	1,303	1,306	1,568	2,049	481	30.7	818	66.5
SOE	1,881	1,726	1,633	1,573	1,489	-84	-5.3	-392	-20.8
UND	222	239	204	163	118	-45	-27.6	-104	-46.8
<b>Total</b>	<b>8,099</b>	<b>8,185</b>	<b>8,153</b>	<b>8,164</b>	<b>8,665</b>	<b>501</b>	<b>6.1</b>	<b>566</b>	<b>7.0</b>

Figure 2: Total Headcount - Undergraduate by School

School	Fall 2010	Fall 2011	Fall 2012	Fall 2013	Fall 2014	1 Year Change		5 Year Change	
						Fall 2013 vs. Fall 2014		Fall 2010 vs. Fall 2014 Change	
	count	count	count	count	count	difference	% change	difference	% change
BUS	1,257	1,269	1,328	1,423	1,614	191	13.4	357	28.4
HSH	1,586	1,665	1,691	1,652	1,714	62	3.8	128	8.1
SCE	605	653	672	729	970	241	33.1	365	60.3
SOE	1,130	1,085	1,058	1,003	970	-33	-3.3	-160	-14.2
UND	222	239	204	163	118	-45	-27.6	-104	-46.8
<b>Total</b>	<b>4,800</b>	<b>4,911</b>	<b>4,953</b>	<b>4,970</b>	<b>5,386</b>	<b>416</b>	<b>8.4</b>	<b>586</b>	<b>12.2</b>

Figure 3: Total Headcount - Graduate by School

School	Fall 2010	Fall 2011	Fall 2012	Fall 2013	Fall 2014	1 Year Change		5 Year Change	
						Fall 2013 vs. Fall 2014		Fall 2010 vs. Fall 2014 Change	
	count	count	count	count	count	difference	% change	difference	% change
BUS	1,003	1,013	1,011	944	932	-12	-1.3	-71	-7.1
HSH	919	970	980	841	749	-92	-10.9	-170	-18.5
SCE	626	650	634	839	1,079	240	28.6	453	72.4
SOE	751	641	575	570	519	-51	-8.9	-232	-30.9
<b>Total</b>	<b>3,299</b>	<b>3,274</b>	<b>3,200</b>	<b>3,194</b>	<b>3,279</b>	<b>85</b>	<b>2.7</b>	<b>-20</b>	<b>-0.6</b>

SOE graduate total includes 78 Doctoral level students for Fall 2010; 76 for Fall 2011; 98 for Fall 2012; 100 for Fall 2013 and 91 for Fall 2014. Prior to Summer 2006, graduates could be classified as non-degree seeking and/or certificate seekers. The THECB requires that all graduate students are reported with a valid degree program and are accepted into a graduate program to which they meet all of the academic requirements.

Total SCH include funded and non-funded figures



Figure 4: Total Semester Credit Hours - Graduate and Undergraduate Combined by School

School	Fall 2010	Fall 2011	Fall 2012	Fall 2013	Fall 2014	1 Year Change		5 Year Change	
						Fall 2013 vs. Fall 2014		Fall 2010 vs. Fall 2014 Change	
	count	count	count	count	count	difference	% change	difference	% change
BUS	19,086	19,579	19,713	20,569	21,724	1,155	5.6	2,638	13.8
HSH	23,198	24,893	24,736	22,818	23,093	275	1.2	-105	-0.5
SCE	11,455	11,938	12,351	14,924	20,163	5,239	35.1	8,708	76.0
SOE	14,897	13,445	12,455	12,348	12,046	-302	-2.4	-2,851	-19.1
Total	68,636	69,855	69,255	70,659	77,026	6,367	9.0	8,390	12.2

Figure 5: Total Semester Credit Hours - Undergraduate by School

School	Fall 2010	Fall 2011	Fall 2012	Fall 2013	Fall 2014	1 Year Change		5 Year Change	
						Fall 2013 vs. Fall 2014		Fall 2010 vs. Fall 2014 Change	
	count	count	count	count	count	difference	% change	difference	% change
BUS	11,062	11,482	11,824	12,970	14,152	1,182	9.1	3,090	27.9
HSH	17,528	18,586	18,485	17,461	18,307	846	4.8	779	4.4
SCE	6,890	7,019	7,554	8,217	10,903	2,686	32.7	4,013	58.2
SOE	10,587	9,827	9,076	9,016	9,039	23	0.3	-1,548	-14.6
Total	46,067	46,914	46,939	47,664	52,401	4,737	9.9	6,334	13.7

Figure 6: Total Semester Credit Hours - Graduate by School

School	Fall 2010	Fall 2011	Fall 2012	Fall 2013	Fall 2014	1 Year Change		5 Year Change	
						Fall 2013 vs. Fall 2014		Fall 2010 vs. Fall 2014 Change	
	count	count	count	count	count	difference	% change	difference	% change
BUS	8,024	8,097	7,889	7,599	7,572	-27	-0.4	-452	-5.6
HSH	5,670	6,307	6,251	5,357	4,786	-571	-10.7	-884	-15.6
SCE	4,565	4,919	4,797	6,707	9,260	2,553	38.1	4,695	102.8
SOE	4,310	3,618	3,379	3,332	3,007	-325	-9.8	-1,303	-30.2
Total	22,569	22,941	22,316	22,995	24,625	1,630	7.1	2,056	9.1

**Total SCH** - Total number of Semester Credit Hours (enrollment \* actual sch) - funded & non-funded

A total of 492 SCH were generated in SOE for Doctoral students for Fall 2010. A total of 426 SCH were generated in SOE for Doctoral students for Fall 2011.

A total of 633 SCH were generated in SOE for Doctoral students for Fall 2012. A total of 672 SCH were generated in SOE for Doctoral students for Fall 2013.

A total of 546 SCH were generated in SOE for Doctoral students for Fall 2014.

These data were derived using the certified CBM-004 course report to the state - data may differ to other previously published reports.

**CB process removes 8 week 2 courses for fall 2014:**

In compliance with THECB rules and regulations, Students enrolled in classes organized after the official census date should be included in the data submitted in the semester following. SCH for 8wk2 will be reported with spring 2015 data. Note that if 8wk2 students are enrolled in other counted courses, the HC and SCH will be included - only 8wk2 excluded. Summer 2014 3w3 included in Fall 2014 if enrollments exist for session.

Figure 7: Graph of Total Headcount - Graduate and Undergraduate Combined by School

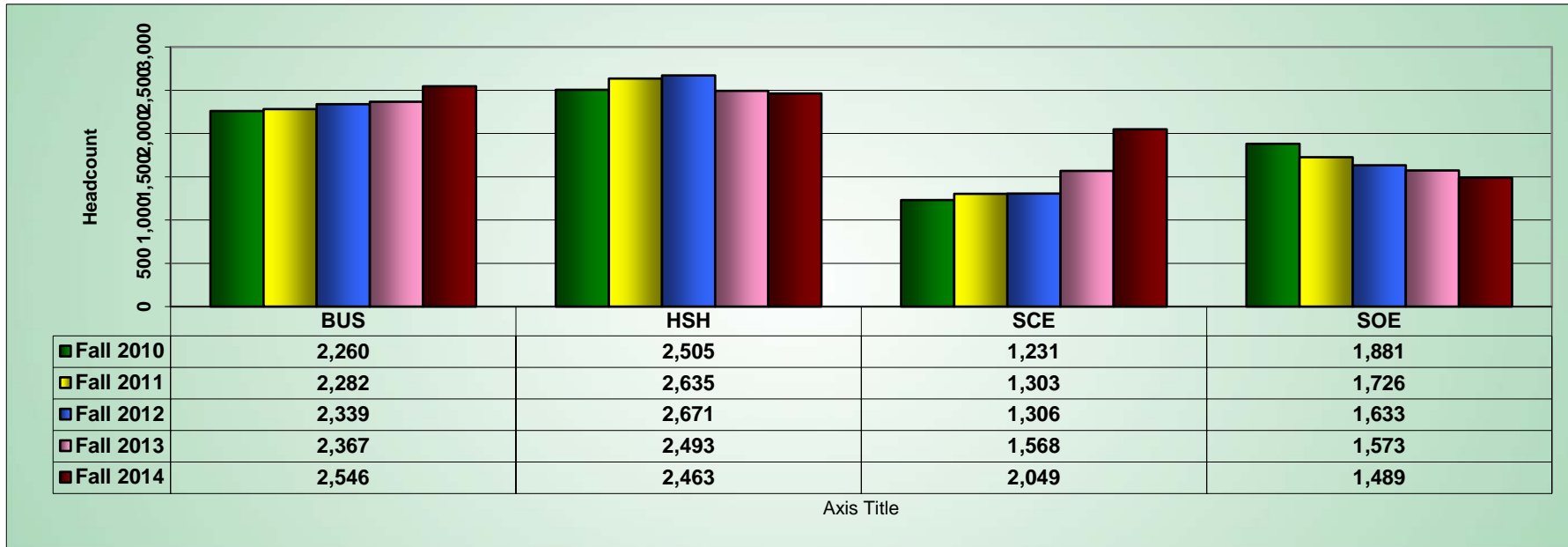


Figure 8: Graph of Total SCH - Graduate and Undergraduate Combined by School

