



# Office of Institutional Effectiveness



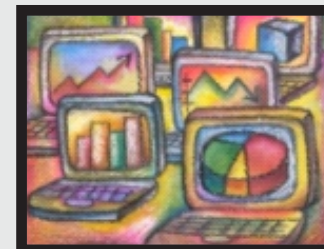
University  
of Houston  
Clear Lake

## Faculty Salaries *Fall 2009 to Fall 2013*

Published June 2014



**OIE Staff:**  
**Kevin Barlow - Executive Director**  
**Miriam Qumsieh - Assistant Director**  
**Sophia Yan - Research Analyst III**  
**Debra Ross - Research Analyst II**  
**Mary Ballew - Research Analyst & Assessment Coordinator**



**University of Houston - Clear Lake**  
**Office of Institutional Effectiveness**  
**Average Full-Time Faculty Teaching Salary by School and Rank**

(Source: Certified CBM008 Fall 2009-2013)

**Definitions**

Count - Faculty headcount of faculty teaching for 100 % or more for current fall term

Mean - Average Fiscal Year salary by school and rank

Individual's Fiscal Year Salary - (Fall Salary times 2) as instructed by THECB, were calculated and then aggregated for the averages.

**Note: Excludes Overload and Flex-Entry Salaries For all Fiscal Years (FY)**

		FY 2009		FY 2010		FY 2011		FY 2012		FY 2013	
		Count	Mean	Count	Mean	Count	Mean	Count	Mean	Count	Mean
<b>UHCL Total</b>											
	Professor	56	94,026	58	96,632	61	96,619	60	96,542	56	99,491
	Associate Professor	80	71,715	82	72,979	85	73,784	91	73,111	94	76,340
	Assistant Professor	69	64,013	70	63,544	76	62,578	70	63,692	66	65,243
	Instructor	1	44,518	n/a	n/a	1	46,700	n/a	n/a	n/a	n/a
	<b>UHCL Total</b>	<b>206</b>	<b>75,068</b>	<b>210</b>	<b>76,367</b>	<b>223</b>	<b>69,920</b>	<b>221</b>	<b>76,489</b>	<b>216</b>	<b>78,951</b>
<b>School of Business</b>											
	Professor	19	107,394	20	109,879	21	109,699	21	109,699	19	114,895
	Associate Professor	21	88,172	21	92,373	24	93,809	26	94,462	27	98,893
	Assistant Professor	17	95,562	15	96,870	15	98,147	14	97,915	12	101,010
	Instructor	n/a	n/a	n/a	n/a	n/a	n/a	n/a	n/a	n/a	n/a
	<b>BUS Total</b>	<b>57</b>	<b>96,783</b>	<b>56</b>	<b>99,830</b>	<b>60</b>	<b>100,551</b>	<b>61</b>	<b>100,500</b>	<b>58</b>	<b>104,573</b>
<b>School of Human Sciences &amp; Humanities</b>											
	Professor	15	80,261	15	82,336	16	82,981	17	82,290	16	85,716
	Associate Professor	22	59,411	25	60,461	23	60,391	27	59,441	26	62,571
	Assistant Professor	26	51,314	25	52,509	28	53,030	26	53,578	23	55,894
	Instructor	n/a	n/a	n/a	n/a	n/a	n/a	n/a	n/a	n/a	n/a
	<b>HSH Total</b>	<b>63</b>	<b>61,034</b>	<b>65</b>	<b>62,451</b>	<b>67</b>	<b>65,467</b>	<b>70</b>	<b>62,812</b>	<b>65</b>	<b>65,906</b>
<b>School of Science &amp; Computer Engineering</b>											
	Professor	14	92,426	15	95,138	16	94,842	16	94,842	16	96,971
	Associate Professor	24	74,010	23	74,830	23	73,314	22	73,167	24	74,352
	Assistant Professor	13	63,022	14	63,642	11	65,755	13	66,916	14	68,397
	Instructor	n/a	n/a	n/a	n/a	1	46,700	n/a	n/a	n/a	n/a
	<b>SCE Total</b>	<b>51</b>	<b>76,265</b>	<b>52</b>	<b>77,676</b>	<b>51</b>	<b>70,153</b>	<b>51</b>	<b>78,374</b>	<b>54</b>	<b>79,510</b>
<b>School of Education</b>											
	Professor	8	90,883	8	93,116	8	93,116	6	95,401	5	93,096
	Associate Professor	13	61,717	13	62,450	15	63,002	16	61,409	17	64,384
	Assistant Professor	13	49,144	16	49,457	22	48,889	17	48,513	17	50,046
	Instructor	1	44,518	n/a	n/a	n/a	n/a	n/a	n/a	n/a	n/a
	<b>SOE Total</b>	<b>35</b>	<b>63,222</b>	<b>37</b>	<b>63,462</b>	<b>45</b>	<b>68,336</b>	<b>39</b>	<b>61,017</b>	<b>39</b>	<b>61,815</b>

Salary Computations are based on the specifications outlined in the CBM008 section of the THECB

**University of Houston - Clear Lake**  
**Office of Institutional Effectiveness**  
**Average Full-Time Faculty Teaching Salary by School and Rank**  
(Source: Certified CBM008 Fall 2009-2013)

**REPORTING and PROCEDURES MANUAL for Texas Public Universities - Fall 2007**

Salary Computations are as follows as printed in the THECB reporting Manual:

1. Sum the percent of time assigned for all appointments (Items #13A-13E). Do not include the percent of time of any flex-entry appointment.
2. Sum the salary amounts for all funds (Items #14A-X), excluding the overload (Item #14Z) and flex-entry (Item #16) salary items.
3. Divide the total percent of time assigned for all appointments (step 1) into the sum of all salary amounts (step 2), giving a full-time equivalent (FTE) salary for all appointments. Double this amount to yield a nine-month FTE salary amount.
4. Summarize the FTE salaries (results of step 3) of ONLY the faculty who have percents of time assigned to appointments 01 and/or 02.
5. Tally all faculty with appointment codes 01 and/or 02 where FTE salaries are greater than zero.
6. Divide the total faculty with appointment codes 01 and/or 02 (results of step 5) into the total FTE salaries of faculty with 01 and/or 02 appointments (results of step 4) to yield the average nine-month FTE salaries.