



Office of Institutional Effectiveness



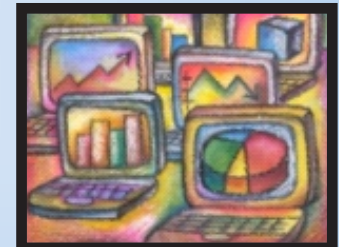
University
of Houston
Clear Lake

Summary of Semester Credit Hours (SCH) by Location *Fall 2003 to Summer 2014*

Published December 2014



OIE Staff:
Miriam Qumsieh - Assistant Director
Sophia Yan - Research Analyst III
Debra Ross - Research Analyst II
Mary Ballew - Research Analyst & Assessment Coordinator
Ami Moller - Research Assessment Associate



University of Houston - Clear Lake
Office of Institutional Research
Summary of Semester Credit Hours (SCH) by Location
Data updated on December 15, 2014

Data source: THECB certified CBM-004 (based on census day data sent to the state) Final State Report
Data highlighted in yellow is considered to be on-campus according to THECB methodology.

Table 1: Funded SCH Only

THECB code	THECB Location Code (Item8)	FY 2003				FY 2004				FY 2005			
		Fall 2002	Spring 2003	Summ 2003	Total FY 2003	Fall 2003	Spring 2004	Summ 2004	Total FY 2004	Fall 2004	Spring 2005	Summ 2005	Total FY 2005
0	On-campus	57,774	56,056	19,897	133,727	58,367	56,650	20,526	135,543	58,232	55,745	17,982	131,959
1	Off-campus	960	1,038	513	2,511	1,116	1,146	570	2,832	1,329	1,593	627	3,549
5	Correctional institution	984	984	516	2,484	765	777	552	2,094	711	594	423	1,728
6	Taught on the campus of another institution including MITCs	987	1,491	957	3,435	1,665	1,752	705	4,122	1,026	1,110	504	2,640
8	Primary or secondary school	132	429	0	561	210	267	0	477	321	351	111	783
9	Individual instructional telecomm via internet (i.e., online courses)	1,695	1,020	900	3,615	1,659	1,412	2,166	5,237	2,424	3,213	2,892	8,529
B	Business government or other	0	0	0	0	0	0	0	0	0	0	0	0
Total		62,532	61,018	22,783	146,333	63,782	62,004	24,519	150,305	64,043	62,606	22,539	149,188

Summary of Funded SCH

Total On-Campus	57,774	56,056	19,897	133,727	58,367	56,650	20,526	135,543	58,232	55,745	17,982	131,959
Total Off-Campus	4,758	4,962	2,886	12,606	5,415	5,354	3,993	14,762	5,811	6,861	4,557	17,229
Total	62,532	61,018	22,783	146,333	63,782	62,004	24,519	150,305	64,043	62,606	22,539	149,188

Table 1 continued: Funded SCH Only

THECB code	THECB Location Code (Item8)	FY 2006				FY 2007				FY 2008			
		Fall 2005	Spring 2006	Summ 2006	Total FY 2006	Fall 2006	Spring 2007	Summ 2007	Total FY 2007	Fall 2007	Spring 2008	Summ 2008	Total FY 2008
0	On-campus	56,686	54,030	16,632	127,348	53,169	51,603	16,120	120,892	49,382	48,187	15,253	112,822
1	Off-campus	1,965	1,905	765	4,635	2,712	2,499	826	6,037	2,154	2,043	741	4,938
5	Correctional institution	558	477	348	1,383	585	600	432	1,617	534	618	471	1,623
6	Taught on the campus of another institution including MITCs	957	999	426	2,382	1,173	999	501	2,673	1,335	1,272	438	3,045
8	Primary or secondary school	447	435	126	1,008	519	615	168	1,302	651	927	102	1,680
9	Individual instructional telecomm via internet (i.e., online courses)	4,692	5,235	4,401	14,328	5,697	6,012	5,311	17,020	6,900	7,692	6,974	21,566
B	Business government or other	0	6	0	6	0	0	0	0	0	0	0	0
	Total	65,305	63,087	22,698	151,090	63,855	62,328	23,358	149,541	60,956	60,739	23,979	145,674

Summary of Funded SCH

Total On-Campus	56,686	54,030	16,632	127,348	53,169	51,603	16,120	120,892	49,382	48,187	15,253	112,822
Total Off-Campus	8,619	9,057	6,066	23,742	10,686	10,725	7,238	28,649	11,574	12,552	8,726	32,852
Total	65,305	63,087	22,698	151,090	63,855	62,328	23,358	149,541	60,956	60,739	23,979	145,674

Table 1 continued: Funded SCH Only

THECB code	THECB Location Code (Item8)	FY 2009				FY 2010				FY 2011			
		Fall 2008	Spring 2009	Summ 2009	Total FY 2009	Fall 2009	Spring 2010	Summ 2010	Total FY 2010	Fall 2010	Spring 2011	Summ 2011	Total FY 2011
0	On-campus	49,809	47,057	12,953	109,819	49,945	49,206	13,733	112,884	51,135	48,476	11,962	111,573
1	Off-campus	2,342	1,857	603	4,802	2,277	2,320	663	5,260	4,138	4,540	1,295	9,973
5	Correctional institution	705	705	492	1,902	717	843	468	2,028	738	576	483	1,797
6	Taught on the campus of another institution including MITCs	1,209	1,071	270	2,550	972	816	267	2,055	972	846	216	2,034
8	Primary or secondary school	1,068	756	63	1,887	624	780	144	1,548	537	282	54	873
9	Individual instructional telecomm via internet (i.e., online courses)	8,040	9,069	6,733	23,842	9,837	10,906	8,820	29,563	10,461	13,141	9,458	33,060
B	Business government or other	0	0	0	0	0	0	0	0	0	0	0	0
Total		63,173	60,515	21,114	144,802	64,372	64,871	24,095	153,338	67,981	67,861	23,468	159,310

Summary of Funded SCH

Total On-Campus	49,809	47,057	12,953	109,819	49,945	49,206	13,733	112,884	51,135	48,476	11,962	111,573
Total Off-Campus	13,364	13,458	8,161	34,983	14,427	15,665	10,362	40,454	16,846	19,385	11,506	47,737
Total	63,173	60,515	21,114	144,802	64,372	64,871	24,095	153,338	67,981	67,861	23,468	159,310

Table 1 continued: Funded SCH Only

THECB code	THECB Location Code (Item8)	FY 2012				FY 2013				FY 2014			
		Fall 2011	Spring 2012	Summ 2012	Total FY 2012	Fall 2012	Spring 2013	Summ 2013	Total FY 2013 to date	Fall 2013	Spring 2014	Summ 2014	Total FY 2014
0	On-campus	50,192	48,370	10,651	109,213	47,616	45,939	10,282	103,837	48,531	47,159	10,259	105,949
1	Off-campus	4,932	5,308	1,158	11,398	4,926	4,623	1,028	10,577	4,757	4,500	977	10,234
5	Correctional institution	786	663	450	1,899	675	588	324	1,587	519	495	318	1,332
6	Taught on the campus of another institution including MITCs	687	699	333	1,719	996	924	288	2,208	825	717	231	1,773
8	Primary or secondary school	480	288	180	948	225	240	126	591	414	216	84	714
9	Individual instructional telecomm via internet (i.e., online courses)	11,708	12,388	10,008	34,104	13,151	13,868	10,168	37,187	13,698	13,395	11,609	38,702
B	Business government or other	0	0	0	0	0	0	0	0	0	0	0	0
Total		68,785	67,716	22,780	159,281	67,589	66,182	22,216	155,987	68,744	66,482	23,478	158,704

Summary of Funded SCH

Total On-Campus	50,192	48,370	10,651	109,213	47,616	45,939	10,282	103,837	48,531	47,159	10,259	105,949
Total Off-Campus	18,593	19,346	12,129	50,068	19,973	20,243	11,934	52,150	20,213	19,323	13,219	52,755
Total	68,785	67,716	22,780	159,281	67,589	66,182	22,216	155,987	68,744	66,482	23,478	158,704

University of Houston - Clear Lake
Office of Institutional Research
Summary of Semester Credit Hours (SCH) by Location
Data updated on December 15, 2014

Data source: THECB certified CBM-004 (based on census day data sent to the state) Final State Report
Data highlighted in yellow is considered to be on-campus according to THECB methodology.

Table 2: Total SCH (Funded and Non-funded combined)

THECB code	THECB Location Code (Item8)	FY 2003				FY 2004				FY 2005			
		Fall 2002	Spring 2003	Summ 2003	Total FY 2003	Fall 2003	Spring 2004	Summ 2004	Total FY 2004	Fall 2004	Spring 2005	Summ 2005	Total FY 2005
0	On-campus	57,777	56,059	19,897	133,733	58,379	56,665	20,529	135,573	58,247	55,760	18,097	132,104
1	Off-campus	960	1,038	513	2,511	1,116	1,146	570	2,832	1,329	1,593	627	3,549
5	Correctional institution	984	984	516	2,484	765	777	552	2,094	711	594	423	1,728
6	Taught on the campus of another institution including MITCs	987	1,491	957	3,435	1,665	1,752	705	4,122	1,026	1,110	504	2,640
8	Primary or secondary school	132	429	0	561	210	267	0	477	321	351	111	783
9	Individual instructional telecomm via internet (i.e., online courses)	1,695	1,020	900	3,615	1,659	1,412	2,166	5,237	2,424	3,213	2,892	8,529
B	Business government or other	0	0	0	0	0	0	0	0	0	0	0	0
Total		62,535	61,021	22,783	146,339	63,794	62,019	24,522	150,335	64,058	62,621	22,654	149,333

Summary of Total SCH

Total On-Campus	57,777	56,059	19,897	133,733	58,379	56,665	20,529	135,573	58,247	55,760	18,097	132,104
Total Off-Campus	4,758	4,962	2,886	12,606	5,415	5,354	3,993	14,762	5,811	6,861	4,557	17,229
Total	62,535	61,021	22,783	146,339	63,794	62,019	24,522	150,335	64,058	62,621	22,654	149,333
Summary of Total Non-funded hours:	3	3	0	6	12	15	3	30	15	15	115	145

Table 2 continued: Total SCH (Funded and Non-funded combined)

THECB code	THECB Location Code (Item8)	FY 2006				FY 2007				FY 2008			
		Fall 2005	Spring 2006	Summ 2006	Total FY 2006	Fall 2006	Spring 2007	Summ 2007	Total FY 2007	Fall 2007	Spring 2008	Summ 2008	Total FY 2008
0	On-campus	56,971	54,105	16,765	127,841	53,375	51,921	16,196	121,492	51,118	48,822	15,517	115,457
1	Off-campus	1,965	1,905	765	4,635	2,712	2,508	826	6,046	2,280	2,055	741	5,076
5	Correctional institution	558	477	348	1,383	585	600	432	1,617	600	618	471	1,689
6	Taught on the campus of another institution including MITCs	957	999	426	2,382	1,173	1,002	501	2,676	1,353	1,272	438	3,063
8	Primary or secondary school	447	438	126	1,011	522	615	168	1,305	651	927	102	1,680
9	Individual instructional telecomm via internet (i.e., online courses)	4,710	5,238	4,413	14,361	5,715	6,033	5,323	17,071	7,068	7,776	7,079	21,923
B	Business government or other	0	6	0	6	0	0	0	0	0	0	0	0
Total		65,608	63,168	22,843	151,619	64,082	62,679	23,446	150,207	63,070	61,470	24,348	148,888

Summary of Total SCH

Total On-Campus	56,971	54,105	16,765	127,841	53,375	51,921	16,196	121,492	51,118	48,822	15,517	115,457
Total Off-Campus	8,637	9,063	6,078	23,778	10,707	10,758	7,250	28,715	11,952	12,648	8,831	33,431
Total	65,608	63,168	22,843	151,619	64,082	62,679	23,446	150,207	63,070	61,470	24,348	148,888
Summary of Total Non-funded hours:	303	81	145	529	227	351	88	666	2,114	731	369	3,214

Please note that non-funded hours show significant increases for Fall 2007 due to the inclusion of 3-peat hours and 45 hour exceeded rules. Fall 2007 contained errors in PS logic with the inclusion of courses that should have been excluded from 3-peat rules and were not. Spring 2008 and later terms reflect corrected data.

Table 2 continued: Total SCH (Funded and Non-funded combined)

THECB code	THECB Location Code (Item8)	FY 2009				FY 2010				FY 2011			
		Fall 2008	Spring 2009	Summ 2009	Total FY 2009	Fall 2009	Spring 2010	Summ 2010	Total FY 2010	Fall 2010	Spring 2011	Summ 2011	Total FY 2011
0	On-campus	50,368	47,780	13,055	111,203	50,212	49,746	13,934	113,892	51,673	49,142	12,216	113,031
1	Off-campus	2,351	1,875	603	4,829	2,280	2,332	666	5,278	4,156	4,597	1,313	10,066
5	Correctional institution	705	705	492	1,902	717	843	468	2,028	738	576	483	1,797
6	Taught on the campus of another institution including MITCs	1,215	1,080	270	2,565	972	816	267	2,055	981	855	216	2,052
8	Primary or secondary school	1,068	759	66	1,893	624	792	144	1,560	540	282	54	876
9	Individual instructional telecomm via internet (i.e., online courses)	8,115	9,204	6,751	24,070	9,876	11,002	8,908	29,786	10,548	13,325	9,594	33,467
B	Business government or other	0	0	0	0	0	0	0	0	0	0	0	0
Total		63,822	61,403	21,237	146,462	64,681	65,531	24,387	154,599	68,636	68,777	23,876	161,289

Summary of Total SCH

Total On-Campus	50,368	47,780	13,055	111,203	50,212	49,746	13,934	113,892	51,673	49,142	12,216	113,031
Total Off-Campus	13,454	13,623	8,182	35,259	14,469	15,785	10,453	40,707	16,963	19,635	11,660	48,258
Total	63,822	61,403	21,237	146,462	64,681	65,531	24,387	154,599	68,636	68,777	23,876	161,289

Summary of Total Non-funded hours:

649	888	123	1,660	309	660	292	1,261	655	916	408	1,979
-----	-----	-----	-------	-----	-----	-----	-------	-----	-----	-----	-------

Note: For fall 2009 3 non-funded sch are for MSCI (military science courses) - the THECB does not fund these

Note: For spring 2010 6 non-funded sch are for MSCI (military science courses) - the THECB does not fund these

Note: Due to a recalibration of unfunded hours beginning Summer 2010, it is expected that Spring 2011 will show a spike.

Table 2 continued: Total SCH (Funded and Non-funded combined)

THECB code	THECB Location Code (Item8)	FY 2012				FY 2013				FY 2014			
		Fall 2011	Spring 2012	Summ 2012	Total FY 2012	Fall 2012	Spring 2013	Summ 2013	Total FY 2013 to date	Fall 2013	Spring 2014	Summ 2014	Total FY 2014
0	On-campus	50,988	49,145	11,007	111,140	48,886	47,288	10,698	106,872	49,908	48,902	10,742	109,552
1	Off-campus	4,992	5,371	1,179	11,542	5,016	4,719	1,034	10,769	4,904	4,674	1,016	10,594
5	Correctional institution	786	663	450	1,899	675	588	324	1,587	519	495	318	1,332
6	Taught on the campus of another institution including MITCs	690	699	342	1,731	1,017	933	294	2,244	834	720	237	1,791
8	Primary or secondary school	480	288	186	954	231	243	126	600	429	231	87	747
9	Individual instructional telecomm via internet (i.e., online courses)	11,919	12,563	10,375	34,857	13,430	14,246	10,583	38,259	14,065	13,905	12,171	40,141
B	Business government or other	0	0	0	0	0	0	0	0	0	0	0	0
Total		69,855	68,729	23,539	162,123	69,255	68,017	23,059	160,331	70,659	68,927	24,571	164,157

Summary of Funded SCH

Total On-Campus	50,988	49,145	11,007	111,140	48,886	47,288	10,698	106,872	49,908	48,902	10,742	109,552
Total Off-Campus	18,867	19,584	12,532	50,983	20,369	20,729	12,361	53,459	20,751	20,025	13,829	54,605
Total	69,855	68,729	23,539	162,123	69,255	68,017	23,059	160,331	70,659	68,927	24,571	164,157
Summary of Total Non-funded hours:	1,070	1,013	759	2,842	1,666	1,835	843	4,344	1,915	2,445	1,093	5,453

Note: For fall 2009 3 non-funded sch are for MSC1 (military science courses) - the THECB does not fund these

Note: For spring 2010 6 non-funded sch are for MSC1 (military science courses) - the THECB does not fund these

Note: Due to a recalibration of unfunded hours beginning Summer 2010, it is expected that Spring 2011 will show a spike.