



# Office of Institutional Research



University  
of Houston  
Clear Lake

## **Enrollment and Semester Credit Hours by School, Classification and Rubric - Summer 2007 to Summer 2011**

Published October 2011

---

### **OIR Staff:**

**Peggy Johnson - Associate Director**  
**Miriam Qumsieh - Senior Institutional Research Analyst**  
**Pablo Salinas - Research Analyst II**  
**Mary Ballew - Research Analyst & Assessment Coordinator**



**University of Houston-Clear Lake  
Office of Institutional Effectiveness**



**Enrollment and Semester Credit Hours by School, Classification and Rubric - Summer 2007 to Summer 2011**

**Definitions:** Undergrad - all undergraduate courses; Graduate - all graduate courses - by crse. Number

Enrolled - Total number of students enrolled in rubric for term - totals will be duplicative

Total SCH - Total number of Semester Credit Hours (enrollment \* actual sch) - funded & non-funded

These data were derived using the certified CBM-004

course report to the state - data may differ to other

previously published reports.

data sorted by rubric within school		Summer 2007		Summer 2008		Summer 2009		Summer 2010		Summer 2011		Summer 2007 vs. Summer 2011 Percent Change		Summer 2010 vs. Summer 2011 Percent Change	
		Enrolled	Total SCH	Enrolled	Total SCH	Enrolled	Total SCH	Enrolled	Total SCH	Enrolled	Total SCH	Enrolled	Total SCH	Enrolled	Total SCH
<b>Undergrad</b>	<b>School of Business</b>														
	ACCT Accounting	224	672	238	714	225	675	267	801	309	927	37.9	37.9	15.7	15.7
	BAPA Business and Public Administration	3	7	7	15	1	3	2	4	2	2	-33.3	-71.4	0.0	-50.0
	DSCI Decision Sciences	123	369	154	462	144	432	114	342	136	408	10.6	10.6	19.3	19.3
	ECON Economics	45	135	66	198	61	183	61	183	26	78	-42.2	-42.2	-57.4	-57.4
	ENVR Environmental Mgmt	2	6	3	9	6	18	6	18	8	24	300.0	300.0	33.3	33.3
	FINC Finance	156	468	160	480	138	414	175	525	165	495	5.8	5.8	-5.7	-5.7
	HADM Healthcare Administration	46	138	40	120	35	105	66	198	82	246	78.3	78.3	24.2	24.2
	ISAM Information Systems Administration and Mgmt	73	219	47	141	41	123	63	189	76	228	4.1	4.1	20.6	20.6
	LEGL Legal Studies	34	102	43	129	19	57	28	84	18	54	-47.1	-47.1	-35.7	-35.7
	MGMT Management	220	660	285	855	188	564	271	813	366	1,098	66.4	66.4	35.1	35.1
	MKTG Marketing	88	264	105	315	118	354	118	354	129	387	46.6	46.6	9.3	9.3
POLS Political Science	0	0	1	3	0	0	0	0	0	0	n/a	n/a	n/a	n/a	
<b>Total</b>	<b>1,014</b>	<b>3,040</b>	<b>1,149</b>	<b>3,441</b>	<b>976</b>	<b>2,928</b>	<b>1,171</b>	<b>3,511</b>	<b>1,317</b>	<b>3,947</b>	<b>29.9</b>	<b>29.8</b>	<b>12.5</b>	<b>12.4</b>	
<b>Graduate</b>	ACCT Accounting	100	300	117	351	101	303	132	396	130	390	30.0	30.0	-1.5	-1.5
	BAPA Business and Public Administration	41	105	61	157	36	100	51	137	83	235	102.4	123.8	62.7	71.5
	DSCI Decision Sciences	39	117	45	135	29	87	53	159	69	207	76.9	76.9	30.2	30.2
	ECON Economics	65	195	64	192	64	192	56	168	39	117	-40.0	-40.0	-30.4	-30.4
	ENVR Environmental Mgmt	9	27	4	12	17	51	7	21	10	30	11.1	11.1	42.9	42.9
	FINC Finance	99	297	169	507	141	423	169	507	177	531	78.8	78.8	4.7	4.7
	HADM Healthcare Administration	124	352	150	450	180	540	165	495	156	468	25.8	33.0	-5.5	-5.5
	HMRS Human Resource Mgmt	13	39	43	129	43	129	62	186	69	207	430.8	430.8	11.3	11.3
	ISAM Information Systems Administration and Mgmt	32	96	57	171	58	174	92	276	81	243	153.1	153.1	-12.0	-12.0
	LEGL Legal Studies	28	84	33	99	24	72	25	75	24	72	-14.3	-14.3	-4.0	-4.0
	MGMT Management	188	564	182	546	189	567	205	615	212	636	12.8	12.8	3.4	3.4
	MKTG Marketing	62	186	54	162	54	162	87	261	107	321	72.6	72.6	23.0	23.0
<b>Total</b>	<b>800</b>	<b>2,362</b>	<b>979</b>	<b>2,911</b>	<b>936</b>	<b>2,800</b>	<b>1,104</b>	<b>3,296</b>	<b>1,157</b>	<b>3,457</b>	<b>44.6</b>	<b>46.4</b>	<b>4.8</b>	<b>4.9</b>	

**Definitions:** Undergrad - all undergraduate courses; Graduate - all graduate courses - by crse. Number  
 Enrolled - Total number of students enrolled in rubric for term - **totals will be duplicative**  
 Total SCH - Total number of Semester Credit Hours (enrollment \* actual sch) - funded & non-funded

These data were derived using the certified CBM-004  
 course report to the state - data may differ to other  
 previously published reports.



data sorted by rubric within school		Summer 2007		Summer 2008		Summer 2009		Summer 2010		Summer 2011		Summer 2007 vs. Summer 2011 Percent Change		Summer 2010 vs. Summer 2011 Percent Change	
		Enrolled	Total SCH	Enrolled	Total SCH	Enrolled	Total SCH	Enrolled	Total SCH	Enrolled	Total SCH	Enrolled	Total SCH	Enrolled	Total SCH
<b>Total BUS</b>	School of Business														
	ACCT Accounting	324	972	355	1,065	326	978	399	1,197	439	1,317	35.5	35.5	10.0	10.0
	BAPA Business and Public Administration	44	112	68	172	37	103	53	141	85	237	93.2	111.6	60.4	68.1
	DSCI Decision Sciences	162	486	199	597	173	519	167	501	205	615	26.5	26.5	22.8	22.8
	ECON Economics	110	330	130	390	125	375	117	351	65	195	-40.9	-40.9	-44.4	-44.4
	ENVR Environmental Mgmt	11	33	7	21	23	69	13	39	18	54	63.6	63.6	38.5	38.5
	FINC Finance	255	765	329	987	279	837	344	1,032	342	1,026	34.1	34.1	-0.6	-0.6
	HADM Healthcare Administration	170	490	190	570	215	645	231	693	238	714	40.0	45.7	3.0	3.0
	HMRS Human Resource Mgmt	13	39	43	129	43	129	62	186	69	207	430.8	430.8	11.3	11.3
	ISAM Information Systems Administration and Mgmt	105	315	104	312	99	297	155	465	157	471	49.5	49.5	1.3	1.3
	LEGL Legal Studies	62	186	76	228	43	129	53	159	42	126	-32.3	-32.3	-20.8	-20.8
	MGMT Management	408	1,224	467	1,401	377	1,131	476	1,428	578	1,734	41.7	41.7	21.4	21.4
	MKTG Marketing	150	450	159	477	172	516	205	615	236	708	57.3	57.3	15.1	15.1
	POLS Political Science	0	0	1	3	0	0	0	0	0	0	n/a	n/a	n/a	n/a
<b>Total</b>	<b>1,814</b>	<b>5,402</b>	<b>2,128</b>	<b>6,352</b>	<b>1,912</b>	<b>5,728</b>	<b>2,275</b>	<b>6,807</b>	<b>2,474</b>	<b>7,404</b>	<b>36.4</b>	<b>37.1</b>	<b>8.7</b>	<b>8.8</b>	

**Definitions:** Undergrad - all undergraduate courses; Graduate - all graduate courses - by crse. Number  
 Enrolled - Total number of students enrolled in rubric for term - **totals will be duplicative**  
 Total SCH - Total number of Semester Credit Hours (enrollment \* actual sch) - funded & non-funded

These data were derived using the certified CBM-004 course report to the state - data may differ to other previously published reports.

data sorted by rubric within school		Summer 2007		Summer 2008		Summer 2009		Summer 2010		Summer 2011		Summer 2007 vs. Summer 2011 Percent Change		Summer 2010 vs. Summer 2011 Percent Change	
		Enrolled	Total SCH	Enrolled	Total SCH	Enrolled	Total SCH	Enrolled	Total SCH	Enrolled	Total SCH	Enrolled	Total SCH	Enrolled	Total SCH
<b>Undergrad</b>	<b>School of Human Sciences and Humanities</b>														
	ANTH Anthropology	81	243	100	300	79	237	91	273	132	396	63.0	63.0	45.1	45.1
	ARTS Arts	168	504	184	552	209	627	203	609	145	435	-13.7	-13.7	-28.6	-28.6
	COMM Communication	49	147	92	276	77	231	160	480	122	366	149.0	149.0	-23.8	-23.8
	CRIM Criminology	77	231	75	225	44	132	88	264	91	273	18.2	18.2	3.4	3.4
	FRAD Fire Services Administration	4	12	8	24	7	21	24	72	5	15	25.0	25.0	-79.2	-79.2
	GEOG Geography	0	0	0	0	0	0	16	48	9	27	n/a	n/a	-43.8	-43.8
	HIST History	150	450	135	405	125	375	94	282	108	324	-28.0	-28.0	14.9	14.9
	HLTH Health	204	612	258	774	247	741	252	756	263	789	28.9	28.9	4.4	4.4
	HUMN Humanities	161	483	129	387	86	258	116	348	131	393	-18.6	-18.6	12.9	12.9
	LITR Literature	156	468	91	273	91	273	71	213	42	126	-73.1	-73.1	-40.8	-40.8
	PHIL Philosophy	27	81	20	60	22	66	21	63	19	57	-29.6	-29.6	-9.5	-9.5
	POLS Political Science	0	0	0	0	2	6	20	60	24	72	n/a	n/a	20.0	20.0
	PSYC Psychology	379	1,137	393	1,179	354	1,062	449	1,227	479	1,229	26.4	8.1	6.7	0.2
	SOCI Sociology	151	453	170	510	208	624	195	585	231	693	53.0	53.0	18.5	18.5
	SWRK Social Work	9	27	20	60	23	69	38	114	21	63	133.3	133.3	-44.7	-44.7
	WMST Womens Studies	6	18	23	69	17	51	10	30	5	15	-16.7	-16.7	-50.0	-50.0
WRIT Writing	177	531	234	702	235	705	367	1,101	348	1,044	96.6	96.6	-5.2	-5.2	
<b>Total</b>	<b>1,799</b>	<b>5,397</b>	<b>1,932</b>	<b>5,796</b>	<b>1,826</b>	<b>5,478</b>	<b>2,215</b>	<b>6,525</b>	<b>2,175</b>	<b>6,317</b>	<b>20.9</b>	<b>17.0</b>	<b>-1.8</b>	<b>-3.2</b>	

**Definitions:** Undergrad - all undergraduate courses; Graduate - all graduate courses - by crse. Number  
 Enrolled - Total number of students enrolled in rubric for term - **totals will be duplicative**  
 Total SCH - Total number of Semester Credit Hours (enrollment \* actual sch) - funded & non-funded

These data were derived using the certified CBM-004  
 course report to the state - data may differ to other  
 previously published reports.

data sorted by rubric within school		Summer 2007		Summer 2008		Summer 2009		Summer 2010		Summer 2011		Summer 2007 vs. Summer 2011 Percent Change		Summer 2010 vs. Summer 2011 Percent Change	
		Enrolled	Total SCH	Enrolled	Total SCH	Enrolled	Total SCH	Enrolled	Total SCH	Enrolled	Total SCH	Enrolled	Total SCH	Enrolled	Total SCH
<b>Graduate</b>	<b>School of Human Sciences and Humanities</b>														
	ANTH Anthropology	0	0	10	30	0	0	0	0	12	36	n/a	n/a	n/a	n/a
	ARTS Arts	12	34	15	45	9	27	3	9	6	18	-50.0	-47.1	100.0	100.0
	COMM Communication	13	39	4	12	2	6	3	9	0	0	-100.0	-100.0	-100.0	-100.0
	CRCL Cross-Cultural Studies	23	69	19	57	14	42	19	57	23	69	0.0	0.0	21.1	21.1
	CRIM Criminology	114	342	89	267	51	153	37	111	46	138	-59.6	-59.6	24.3	24.3
	DMST Digital Media Studies	0	0	13	39	28	84	30	90	19	57	n/a	n/a	-36.7	-36.7
	FRAD Fire Services Administration	0	0	5	15	0	0	1	3	0	0	n/a	n/a	-100.0	-100.0
	FUTR Studies of the Future	6	18	0	0	0	0	0	0	0	0	-100.0	-100.0	n/a	n/a
	GEOG Geography	0	0	0	0	0	0	1	3	0	0	n/a	n/a	-100.0	-100.0
	HIST History	46	138	34	102	24	72	36	108	39	117	-15.2	-15.2	8.3	8.3
	HLTH Health	42	126	26	78	9	27	51	153	31	93	-26.2	-26.2	-39.2	-39.2
	HUMN Humanities	14	42	26	78	21	63	19	57	5	15	-64.3	-64.3	-73.7	-73.7
	LITR Literature	78	234	77	231	54	162	61	183	48	144	-38.5	-38.5	-21.3	-21.3
	PHIL Philosophy	19	57	15	45	16	48	10	30	0	0	-100.0	-100.0	-100.0	-100.0
	PSYC Psychology	352	1,052	345	1,047	283	853	311	939	308	930	-12.5	-11.6	-1.0	-1.0
	SOCI Sociology	39	117	11	33	10	30	12	36	22	66	-43.6	-43.6	83.3	83.3
WMST Womens Studies	3	9	6	18	5	15	7	21	7	21	133.3	133.3	0.0	0.0	
<b>Total</b>	<b>761</b>	<b>2,277</b>	<b>695</b>	<b>2,097</b>	<b>526</b>	<b>1,582</b>	<b>601</b>	<b>1,809</b>	<b>566</b>	<b>1,704</b>	<b>-25.6</b>	<b>-25.2</b>	<b>-5.8</b>	<b>-5.8</b>	

**Definitions:** Undergrad - all undergraduate courses; Graduate - all graduate courses - by crse. Number  
 Enrolled - Total number of students enrolled in rubric for term - **totals will be duplicative**  
 Total SCH - Total number of Semester Credit Hours (enrollment \* actual sch) - funded & non-funded

These data were derived using the certified CBM-004 course report to the state - data may differ to other previously published reports.

data sorted by rubric within school		Summer 2007		Summer 2008		Summer 2009		Summer 2010		Summer 2011		Summer 2007 vs. Summer 2011 Percent Change		Summer 2010 vs. Summer 2011 Percent Change	
		Enrolled	Total SCH	Enrolled	Total SCH	Enrolled	Total SCH	Enrolled	Total SCH	Enrolled	Total SCH	Enrolled	Total SCH	Enrolled	Total SCH
<b>Total HSH</b>	<b>School of Human Sciences and Humanities</b>														
	ANTH Anthropology	81	243	110	330	79	237	91	273	144	432	77.8	77.8	58.2	58.2
	ARTS Arts	180	538	199	597	218	654	206	618	151	453	-16.1	-15.8	-26.7	-26.7
	COMM Communication	62	186	96	288	79	237	163	489	122	366	96.8	96.8	-25.2	-25.2
	CRCL Cross-Cultural Studies	23	69	19	57	14	42	19	57	23	69	0.0	0.0	21.1	21.1
	CRIM Criminology	191	573	164	492	95	285	125	375	137	411	-28.3	-28.3	9.6	9.6
	DMST Digital Media Studies	0	0	13	39	28	84	30	90	19	57	n/a	n/a	-36.7	-36.7
	FRAD Fire Services Administration	4	12	13	39	7	21	25	75	5	15	25.0	25.0	-80.0	-80.0
	FUTR Studies of the Future	6	18	0	0	0	0	0	0	0	0	-100.0	-100.0	n/a	n/a
	GEOG Geography	0	0	0	0	0	0	17	51	9	27	n/a	n/a	-47.1	-47.1
	HIST History	196	588	169	507	149	447	130	390	147	441	-25.0	-25.0	13.1	13.1
	HLTH Health	246	738	284	852	256	768	303	909	294	882	19.5	19.5	-3.0	-3.0
	HUMN Humanities	175	525	155	465	107	321	135	405	136	408	-22.3	-22.3	0.7	0.7
	LITR Literature	234	702	168	504	145	435	132	396	90	270	-61.5	-61.5	-31.8	-31.8
	PHIL Philosophy	46	138	35	105	38	114	31	93	19	57	-58.7	-58.7	-38.7	-38.7
	POLS Political Science	0	0	0	0	2	6	20	60	24	72	n/a	n/a	20.0	20.0
	PSYC Psychology	731	2,189	738	2,226	637	1,915	760	2,166	787	2,159	7.7	-1.4	3.6	-0.3
	SOCI Sociology	190	570	181	543	218	654	207	621	253	759	33.2	33.2	22.2	22.2
	SWRK Social Work	9	27	20	60	23	69	38	114	21	63	133.3	133.3	-44.7	-44.7
	WMST Womens Studies	9	27	29	87	22	66	17	51	12	36	33.3	33.3	-29.4	-29.4
WRIT Writing	177	531	234	702	235	705	367	1,101	348	1,044	96.6	96.6	-5.2	-5.2	
<b>Total</b>		<b>2,560</b>	<b>7,674</b>	<b>2,627</b>	<b>7,893</b>	<b>2,352</b>	<b>7,060</b>	<b>2,816</b>	<b>8,334</b>	<b>2,741</b>	<b>8,021</b>	<b>7.1</b>	<b>4.5</b>	<b>-2.7</b>	<b>-3.8</b>

**Definitions:** Undergrad - all undergraduate courses; Graduate - all graduate courses - by crse. Number  
 Enrolled - Total number of students enrolled in rubric for term - **totals will be duplicative**  
 Total SCH - Total number of Semester Credit Hours (enrollment \* actual sch) - funded & non-funded

These data were derived using the certified CBM-004 course report to the state - data may differ to other previously published reports.



data sorted by rubric within school		Summer 2007		Summer 2008		Summer 2009		Summer 2010		Summer 2011		Summer 2007 vs. Summer 2011 Percent Change		Summer 2010 vs. Summer 2011 Percent Change	
		Enrolled	Total SCH	Enrolled	Total SCH	Enrolled	Total SCH	Enrolled	Total SCH	Enrolled	Total SCH	Enrolled	Total SCH	Enrolled	Total SCH
<b>Undergrad</b>	<b>School of Science and Computer Engineering</b>														
	ASTR Astronomy and Space	56	168	37	111	69	207	96	288	45	135	-19.6	-19.6	-53.1	-53.1
	BIOL Biology	143	400	95	265	122	347	175	499	127	326	-11.2	-18.5	-27.4	-34.7
	CENG Computer Engineering	1	3	12	34	0	0	1	3	13	39	1,200.0	1,200.0	1,200.0	1,200.0
	CHEM Chemistry	52	156	53	159	37	111	75	225	104	312	100.0	100.0	38.7	38.7
	CINF Computer Information	9	27	14	42	8	24	16	48	23	69	155.6	155.6	43.8	43.8
	CSCI Computer Science	58	170	74	220	73	219	46	138	57	167	-1.7	-1.8	23.9	21.0
	ENSC Environmental Science	0	0	13	39	7	21	4	8	1	1	n/a	n/a	-75.0	-87.5
	GEOL Geology	109	327	52	156	53	159	60	174	57	171	-47.7	-47.7	-5.0	-1.7
	INDH Industrial Hygiene and	13	39	19	57	5	15	14	42	15	45	15.4	15.4	7.1	7.1
	MATH Mathematics	116	348	131	393	90	270	100	300	106	318	-8.6	-8.6	6.0	6.0
	PHYS Physics	7	21	6	18	6	18	13	27	16	32	128.6	52.4	23.1	18.5
	SWEN Software Engineering	0	0	10	30	18	54	23	69	0	0	n/a	n/a	-100.0	-100.0
	<b>Total</b>	<b>564</b>	<b>1,659</b>	<b>516</b>	<b>1,524</b>	<b>488</b>	<b>1,445</b>	<b>623</b>	<b>1,821</b>	<b>564</b>	<b>1,615</b>	<b>0.0</b>	<b>-2.7</b>	<b>-9.5</b>	<b>-11.3</b>
<b>Graduate</b>	ASTR Astronomy and Space	11	33	5	15	3	9	2	6	0	0	-100.0	-100.0	-100.0	-100.0
	BIOL Biology	35	105	48	144	24	72	31	89	55	163	57.1	55.2	77.4	83.1
	BIOT Biotechnology	0	0	13	37	9	17	31	68	46	112	n/a	n/a	48.4	64.7
	CENG Computer Engineering	4	12	13	27	13	37	16	40	18	48	350.0	300.0	12.5	20.0
	CHEM Chemistry	20	60	25	75	20	60	22	66	15	45	-25.0	-25.0	-31.8	-31.8
	CINF Computer Information	0	0	1	3	1	3	2	6	1	3	n/a	n/a	-50.0	-50.0
	CSCI Computer Science	78	232	116	330	88	250	83	235	140	390	79.5	68.1	68.7	66.0
	EMGT Engineering Management	0	0	0	0	26	78	31	93	54	162	n/a	n/a	74.2	74.2
	ENSC Environmental Science	14	42	11	33	8	24	6	18	4	12	-71.4	-71.4	-33.3	-33.3
	INDH Industrial Hygiene and Safety	5	15	10	30	7	21	7	21	13	39	160.0	160.0	85.7	85.7
	MATH Mathematics	12	36	24	72	14	42	22	66	12	36	0.0	0.0	-45.5	-45.5
	PHYS Physics	8	24	17	51	12	36	3	9	6	18	-25.0	-25.0	100.0	100.0
	SENG Systems Engineering	24	72	25	75	23	69	38	114	34	102	41.7	41.7	-10.5	-10.5
	STAT Statistics	0	0	25	75	0	0	13	39	22	66	n/a	n/a	69.2	69.2
	SWEN Software Engineering	37	111	63	189	38	114	52	156	80	240	116.2	116.2	53.8	53.8
	<b>Total</b>	<b>248</b>	<b>742</b>	<b>396</b>	<b>1,156</b>	<b>286</b>	<b>832</b>	<b>359</b>	<b>1,026</b>	<b>500</b>	<b>1,436</b>	<b>101.6</b>	<b>93.5</b>	<b>39.3</b>	<b>40.0</b>

**Definitions:** Undergrad - all undergraduate courses; Graduate - all graduate courses - by crse. Number  
 Enrolled - Total number of students enrolled in rubric for term - **totals will be duplicative**  
 Total SCH - Total number of Semester Credit Hours (enrollment \* actual sch) - funded & non-funded

These data were derived using the certified CBM-004 course report to the state - data may differ to other previously published reports.



data sorted by rubric within school		Summer 2007		Summer 2008		Summer 2009		Summer 2010		Summer 2011		Summer 2007 vs. Summer 2011 Percent Change		Summer 2010 vs. Summer 2011 Percent Change	
		Enrolled	Total SCH	Enrolled	Total SCH	Enrolled	Total SCH	Enrolled	Total SCH	Enrolled	Total SCH	Enrolled	Total SCH	Enrolled	Total SCH
<b>Total SCE</b>	<b>School of Science and Computer Engineering</b>														
	ASTR Astronomy and Space	67	201	42	126	72	216	98	294	45	135	-32.8	-32.8	-54.1	-54.1
	BIOL Biology	178	505	143	409	146	419	206	588	182	489	2.2	-3.2	-11.7	-16.8
	BIOT Biotechnology	0	0	13	37	9	17	31	68	46	112	n/a	n/a	48.4	64.7
	CENG Computer Engineering	5	15	25	61	13	37	17	43	31	87	520.0	480.0	82.4	102.3
	CHEM Chemistry	72	216	78	234	57	171	97	291	119	357	65.3	65.3	22.7	22.7
	CINF Computer Information	9	27	15	45	9	27	18	54	24	72	166.7	166.7	33.3	33.3
	CSCI Computer Science	136	402	190	550	161	469	129	373	197	557	44.9	38.6	52.7	49.3
	EMGT Engineering Management	0	0	0	0	26	78	31	93	54	162	n/a	n/a	74.2	74.2
	ENSC Environmental Science	14	42	24	72	15	45	10	26	5	13	-64.3	-69.0	-50.0	-50.0
	GEOG Geology	109	327	52	156	53	159	60	174	57	171	-47.7	-47.7	-5.0	-1.7
	INDH Industrial Hygiene and	18	54	29	87	12	36	21	63	28	84	55.6	55.6	33.3	33.3
	MATH Mathematics	128	384	155	465	104	312	122	366	118	354	-7.8	-7.8	-3.3	-3.3
	PHYS Physics	15	45	23	69	18	54	16	36	22	50	46.7	11.1	37.5	38.9
	SENG Systems Engineering	24	72	25	75	23	69	38	114	34	102	41.7	41.7	-10.5	-10.5
	STAT Statistics	0	0	25	75	0	0	13	39	22	66	n/a	n/a	69.2	69.2
	SWEN Software Engineering	37	111	73	219	56	168	75	225	80	240	116.2	116.2	6.7	6.7
	<b>Total</b>	<b>812</b>	<b>2,401</b>	<b>912</b>	<b>2,680</b>	<b>774</b>	<b>2,277</b>	<b>982</b>	<b>2,847</b>	<b>1,064</b>	<b>3,051</b>	<b>31.0</b>	<b>27.1</b>	<b>8.4</b>	<b>7.2</b>



**Definitions:** Undergrad - all undergraduate courses; Graduate - all graduate courses - by crse. Number  
 Enrolled - Total number of students enrolled in rubric for term - **totals will be duplicative**  
 Total SCH - Total number of Semester Credit Hours (enrollment \* actual sch) - funded & non-funded

These data were derived using the certified CBM-004 course report to the state - data may differ to other previously published reports.



data sorted by rubric within school		Summer 2007		Summer 2008		Summer 2009		Summer 2010		Summer 2011		Summer 2007 vs. Summer 2011 Percent Change		Summer 2010 vs. Summer 2011 Percent Change	
		Enrolled	Total SCH	Enrolled	Total SCH	Enrolled	Total SCH	Enrolled	Total SCH	Enrolled	Total SCH	Enrolled	Total SCH	Enrolled	Total SCH
<b>Undergrad</b>	<b>School of Education</b>														
	ECED Early Childhood Education	75	225	63	189	78	234	76	228	94	282	25.3	25.3	23.7	23.7
	EDUC Education	146	438	179	537	167	501	146	438	74	222	-49.3	-49.3	-49.3	-49.3
	GEOG Geography	40	120	28	84	20	60	0	0	0	0	-100.0	-100.0	n/a	n/a
	INST Instructional Technology	45	135	32	96	84	252	126	378	98	294	117.8	117.8	-22.2	-22.2
	LLLS Literacy, Language, and Library Science	187	561	171	513	239	717	242	726	174	522	-7.0	-7.0	-28.1	-28.1
	SILC Studies in Language and Culture	59	177	72	216	70	210	121	363	133	399	125.4	125.4	9.9	9.9
	SPED Special Education	94	282	84	252	101	303	122	366	114	342	21.3	21.3	-6.6	-6.6
	TCED Teacher Education	313	745	251	571	187	367	232	514	215	515	-31.3	-30.9	-7.3	0.2
<b>Total</b>	<b>959</b>	<b>2,683</b>	<b>880</b>	<b>2,458</b>	<b>946</b>	<b>2,644</b>	<b>1,065</b>	<b>3,013</b>	<b>902</b>	<b>2,576</b>	<b>-5.9</b>	<b>-4.0</b>	<b>-15.3</b>	<b>-14.5</b>	
<b>Graduate excluding Doctoral</b>	ADSD Administration and Supervision	625	1,875	531	1,593	268	804	178	534	150	420	-76.0	-77.6	-15.7	-21.3
	COUN Counseling	285	855	226	678	203	609	252	756	267	801	-6.3	-6.3	6.0	6.0
	ECED Early Childhood Education	55	165	69	207	23	69	23	69	29	87	-47.3	-47.3	26.1	26.1
	EDUC Education	173	519	225	675	167	501	103	309	91	273	-47.4	-47.4	-11.7	-11.7
	GEOG Geography	0	0	0	0	2	6	0	0	0	0	n/a	n/a	n/a	n/a
	INST Instructional Technology	221	663	214	642	139	413	184	552	102	304	-53.8	-54.1	-44.6	-44.9
	LLLS Literacy, Language, and Library Science	190	570	169	507	145	435	196	588	128	356	-32.6	-37.5	-34.7	-39.5
	SILC Studies in Language and Culture	113	339	104	312	69	207	79	237	73	219	-35.4	-35.4	-7.6	-7.6
	SPED Special Education	13	39	4	12	1	3	1	3	6	18	-53.8	-53.8	500.0	500.0
TCED Teacher Education	55	147	41	99	48	136	22	56	35	97	-36.4	-34.0	59.1	73.2	
<b>Total</b>	<b>1,730</b>	<b>5,172</b>	<b>1,583</b>	<b>4,725</b>	<b>1,065</b>	<b>3,183</b>	<b>1,038</b>	<b>3,104</b>	<b>881</b>	<b>2,575</b>	<b>-49.1</b>	<b>-50.2</b>	<b>-15.1</b>	<b>-17.0</b>	
<b>Doctoral</b>	ADSD Administration and Supervision	19	57	80	240	114	345	0	0	0	0	-100.0	-100.0	n/a	n/a
	EDLS Educational Leadership	0	0	0	0	0	0	94	282	81	249	n/a	n/a	-13.8	-11.7
	EDUC Education	19	57	0	0	0	0	0	0	0	0	-100.0	-100.0	n/a	n/a
	<b>Total</b>	<b>38</b>	<b>114</b>	<b>80</b>	<b>240</b>	<b>114</b>	<b>345</b>	<b>94</b>	<b>282</b>	<b>81</b>	<b>249</b>	<b>113.2</b>	<b>118.4</b>	<b>-13.8</b>	<b>-11.7</b>

**Definitions:** Undergrad - all undergraduate courses; Graduate - all graduate courses - by crse. Number  
 Enrolled - Total number of students enrolled in rubric for term - **totals will be duplicative**  
 Total SCH - Total number of Semester Credit Hours (enrollment \* actual sch) - funded & non-funded

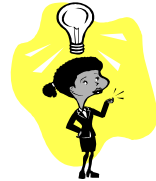
These data were derived using the certified CBM-004 course report to the state - data may differ to other previously published reports.



School of Education		Summer 2007		Summer 2008		Summer 2009		Summer 2010		Summer 2011		Summer 2007 vs. Summer 2011 Percent Change		Summer 2010 vs. Summer 2011 Percent Change	
		Enrolled	Total SCH	Enrolled	Total SCH	Enrolled	Total SCH	Enrolled	Total SCH	Enrolled	Total SCH	Enrolled	Total SCH	Enrolled	Total SCH
Total SOE	GEOG Geography	40	120	28	84	22	66	0	0	0	0	-100.0	-100.0	n/a	n/a
	ADSD Administration and Supervision	644	1,932	611	1,833	382	1,149	178	534	150	420	-76.7	-78.3	-15.7	-21.3
	COUN Counseling	285	855	226	678	203	609	252	756	267	801	-6.3	-6.3	6.0	6.0
	ECED Early Childhood Education	130	390	132	396	101	303	99	297	123	369	-5.4	-5.4	24.2	24.2
	EDLS Educational Leadership	0	0	0	0	0	0	94	282	81	249	n/a	n/a	-13.8	-11.7
	EDUC Education	338	1,014	404	1,212	334	1,002	249	747	165	495	-51.2	-51.2	-33.7	-33.7
	INST Instructional Technology	266	798	246	738	223	665	310	930	200	598	-24.8	-25.1	-35.5	-35.7
	LLLS Literacy, Language, and Library Science	377	1,131	340	1,020	384	1,152	438	1,314	302	878	-19.9	-22.4	-31.1	-33.2
	SILC Studies in Language and Culture	172	516	176	528	139	417	200	600	206	618	19.8	19.8	3.0	3.0
	SPED Special Education	107	321	88	264	102	306	123	369	120	360	12.1	12.1	-2.4	-2.4
	TCED Teacher Education	368	892	292	670	235	503	254	570	250	612	-32.1	-31.4	-1.6	7.4
	<b>Total</b>	<b>2,727</b>	<b>7,969</b>	<b>2,543</b>	<b>7,423</b>	<b>2,125</b>	<b>6,172</b>	<b>2,197</b>	<b>6,399</b>	<b>1,864</b>	<b>5,400</b>	<b>-31.6</b>	<b>-32.2</b>	<b>-15.2</b>	<b>-15.6</b>

<b>Total UHCL SCH</b>	<b>23,446</b>	<b>24,348</b>	<b>21,237</b>	<b>24,387</b>	<b>23,876</b>	<b>1.8</b>	<b>-2.1</b>
-----------------------	---------------	---------------	---------------	---------------	---------------	------------	-------------



**Note:**  
 POLS TRANSFERRED TO HSH FROM BUS as of Fall 2008  
 GEOG TRANSFERRED TO HSH FROM SOE as of Fall 2009