



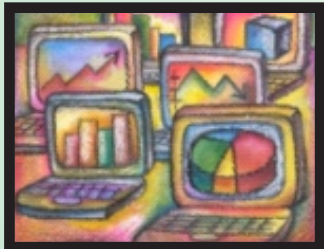
Office of Institutional Effectiveness



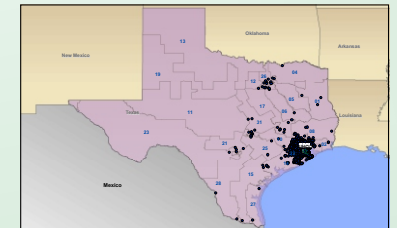
University
of Houston
Clear Lake

Enrollment and Semester Credit Hours by School, Classification and Rubric Fall 2010 - Fall 2014

Published March, 2015



OIE Staff:
Miriam Qumsieh - Assistant Director
Sophia Yan - Research Analyst III
Debra Ross - Research Analyst II
Mary Ballew - Research Analyst & Assessment Coordinator
Ami Moller - Research Assessment Associate



**University of Houston-Clear Lake
Office of Institutional Effectiveness**



Enrollment and Semester Credit Hours by School, Classification and Rubric - Fall 2010 to Fall 2014

Definitions: Undergrad - all undergraduate courses; Graduate - all graduate courses - by crse. Number
Enrolled - Total number of students enrolled in rubric for term - **totals will be duplicative**
Total SCH - Total number of Semester Credit Hours (enrollment * actual sch) - funded & non-funded

These data were derived using the certified CBM-004 course report to the state - data may differ to other previously published reports.

data sorted by rubric within school		Fall 2010		Fall 2011		Fall 2012		Fall 2013		Fall 2014		Fall 2010 vs. Fall 2014 Percent Change		Fall 2013 vs. Fall 2014 Percent Change	
		Enrolled	Total SCH	Enrolled	Total SCH	Enrolled	Total SCH	Enrolled	Total SCH	Enrolled	Total SCH	Enrolled	Total SCH	Enrolled	Total SCH
Undergrad	School of Business														
	ACCT Accounting	899	2,697	922	2,766	946	2,838	924	2,772	934	2,802	3.9	3.9	1.1	1.1
	BAPA Business & Public Admin.	1	1	1	1	2	4	1	1	2	4	100.0	300.0	100.0	300.0
	DSCI Decision Sciences	415	1,245	453	1,359	402	1,206	489	1,467	492	1,476	18.6	18.6	0.6	0.6
	ECON Economics	219	657	212	636	234	702	254	762	345	1,035	57.5	57.5	35.8	35.8
	ENVR Environmental Mgmt	61	183	77	231	61	183	93	279	92	276	50.8	50.8	-1.1	-1.1
	FINC Finance	329	987	287	861	321	963	371	1,113	346	1,038	5.2	5.2	-6.7	-6.7
	HADM Healthcare Admin.	160	480	182	546	210	630	288	864	278	834	73.8	73.8	-3.5	-3.5
	ISAM Information Sys. Admin. & Mgmt	211	633	314	942	360	1,080	373	1,119	436	1,308	106.6	106.6	16.9	16.9
	LEGL Legal Studies	147	441	113	339	159	477	175	525	243	729	65.3	65.3	38.9	38.9
	MGMT Management	873	2,619	887	2,661	906	2,718	939	2,817	990	2,970	13.4	13.4	5.4	5.4
	MKTG Marketing	373	1,119	380	1,140	341	1,023	417	1,251	386	1,158	3.5	3.5	-7.4	-7.4
	MSCI Military Science	0	0	0	0	0	0	0	0	0	0	n/a	n/a	n/a	n/a
	Total	3,688	11,062	3,828	11,482	3,942	11,824	4,324	12,970	4,544	13,630	23.2	23.2	5.1	5.1
Graduate	ACCT Accounting	445	1,335	476	1,428	434	1,302	401	1,203	344	1,032	-22.7	-22.7	-14.2	-14.2
	BAPA Business & Public Admin.	102	286	88	252	106	308	79	231	43	129	-57.8	-54.9	-45.6	-44.2
	DSCI Decision Sciences	174	522	201	603	215	645	163	489	138	414	-20.7	-20.7	-15.3	-15.3
	ECON Economics	142	426	174	522	160	480	130	390	91	273	-35.9	-35.9	-30.0	-30.0
	ENVR Environmental Mgmt	56	168	52	156	64	192	74	222	43	129	-23.2	-23.2	-41.9	-41.9
	FINC Finance	309	927	332	996	338	1,014	266	798	198	594	-35.9	-35.9	-25.6	-25.6
	HADM Healthcare Admin.	457	1,357	410	1,230	429	1,287	348	1,044	337	1,011	-26.3	-25.5	-3.2	-3.2
	HMRS Human Resource Mgmt	88	264	109	327	69	207	76	228	68	204	-22.7	-22.7	-10.5	-10.5
	ISAM Information Sys. Admin. & Mgmt	341	1,023	300	900	286	858	504	1,512	776	2,328	127.6	127.6	54.0	54.0
	LEGL Legal Studies	18	54	8	24	0	0	10	30	17	51	-5.6	-5.6	70.0	70.0
	MGMT Management	391	1,173	384	1,152	369	1,107	343	1,029	321	963	-17.9	-17.9	-6.4	-6.4
	MKTG Marketing	150	450	169	507	163	489	141	423	148	444	-1.3	-1.3	5.0	5.0
	PPRM Public & Private Mgmt	13	39	0	0	0	0	0	0	0	0	-100.0	-100.0	n/a	n/a
	Total	2,686	8,024	2,703	8,097	2,633	7,889	2,535	7,599	2,524	7,572	-6.0	-5.6	-0.4	-0.4

Definitions: Undergrad - all undergraduate courses; Graduate - all graduate courses - by crse. Number Enrolled - Total number of students enrolled in rubric for term - **totals will be duplicative**
Total SCH - Total number of Semester Credit Hours (enrollment * actual sch) - funded & non-funded

These data were derived using the certified CBM-004 course report to the state - data may differ to other previously published reports.

Total BUS

School of Business	Fall 2010		Fall 2011		Fall 2012		Fall 2013		Fall 2014		Fall 2010 vs. Fall 2014 Percent Change		Fall 2013 vs. Fall 2014 Percent Change	
	Enrolled	Total SCH	Enrolled	Total SCH	Enrolled	Total SCH	Enrolled	Total SCH	Enrolled	Total SCH	Enrolled	Total SCH	Enrolled	Total SCH
ACCT Accounting	1,344	4,032	1,398	4,194	1,380	4,140	1,325	3,975	1,278	3,834	-4.9	-4.9	-3.5	-3.5
BAPA Business & Public Admin.	103	287	89	253	108	312	80	232	45	133	-56.3	-53.7	-43.8	-42.7
DSCI Decision Sciences	589	1,767	654	1,962	617	1,851	652	1,956	630	1,890	7.0	7.0	-3.4	-3.4
ECON Economics	361	1,083	386	1,158	394	1,182	384	1,152	436	1,308	20.8	20.8	13.5	13.5
ENVR Environmental Mgmt	117	351	129	387	125	375	167	501	135	405	15.4	15.4	-19.2	-19.2
FINC Finance	638	1,914	619	1,857	659	1,977	637	1,911	544	1,632	-14.7	-14.7	-14.6	-14.6
HADM Healthcare Admin.	617	1,837	592	1,776	639	1,917	636	1,908	615	1,845	-0.3	0.4	-3.3	-3.3
HMRS Human Resource Mgmt	88	264	109	327	69	207	76	228	68	204	-22.7	-22.7	-10.5	-10.5
ISAM Information Sys. Admin. & Mgmt	552	1,656	614	1,842	646	1,938	877	2,631	1,212	3,636	119.6	119.6	38.2	38.2
LEGL Legal Studies	165	495	121	363	159	477	185	555	260	780	57.6	57.6	40.5	40.5
MGMT Management	1,264	3,792	1,271	3,813	1,275	3,825	1,282	3,846	1,311	3,933	3.7	3.7	2.3	2.3
MKTG Marketing	523	1,569	549	1,647	504	1,512	558	1,674	534	1,602	2.1	2.1	-4.3	-4.3
MSCI Military Science	0	0	0	0	0	0	0	0	0	0	n/a	n/a	n/a	n/a
PPRM Public & Private Mgmt	13	39	0	0	0	0	0	0	0	0	-100.0	-100.0	n/a	n/a
Total	6,374	19,086	6,531	19,579	6,575	19,713	6,859	20,569	7,068	21,202	10.9	11.1	3.0	3.1

Definitions: Undergrad - all undergraduate courses; Graduate - all graduate courses - by crse. Number Enrolled - Total number of students enrolled in rubric for term - **totals will be duplicative**
Total SCH - Total number of Semester Credit Hours (enrollment * actual sch) - funded & non-funded

These data were derived using the certified CBM-004 course report to the state - data may differ to other previously published reports.

Undergrad

data sorted by rubric within school		Fall 2010		Fall 2011		Fall 2012		Fall 2013		Fall 2014		Fall 2010 vs. Fall 2014 Percent Change		Fall 2013 vs. Fall 2014 Percent Change	
School of Human Sciences and Humanities		Enrolled	Total SCH	Enrolled	Total SCH	Enrolled	Total SCH	Enrolled	Total SCH	Enrolled	Total SCH	Enrolled	Total SCH	Enrolled	Total SCH
ANTH Anthropology		329	987	340	1,020	357	1,071	290	870	297	891	-9.7	-9.7	2.4	2.4
ARTS Arts		575	1,725	543	1,629	561	1,683	472	1,416	473	1,419	-17.7	-17.7	0.2	0.2
COMM Communication		338	1,060	310	973	285	882	301	957	413	1,296	22.2	22.3	37.2	35.4
CRIM Criminology		188	564	199	597	265	795	353	1,059	339	1,017	80.3	80.3	-4.0	-4.0
FRAD Fire Services Admin.		40	120	52	156	1	3	0	0	0	0	-100.0	-100.0	n/a	n/a
GEOG Geography		81	243	59	177	94	282	83	249	69	207	-14.8	-14.8	-16.9	-16.9
HIST History		381	1,143	350	1,050	351	1,053	311	933	429	1,287	12.6	12.6	37.9	37.9
HLTH Health		423	1,269	466	1,398	522	1,566	542	1,626	549	1,647	29.8	29.8	1.3	1.3
HSAF Study Abroad		0	0	0	0	0	0	0	0	2	6	n/a	n/a	n/a	n/a
HUMN Humanities		412	1,236	414	1,242	456	1,368	428	1,284	143	429	-65.3	-65.3	-66.6	-66.6
LITR Literature		292	876	268	804	231	693	253	759	250	750	-14.4	-14.4	-1.2	-1.2
NURS Nursing		0	0	0	0	0	0	0	0	51	153	n/a	n/a	n/a	n/a
PHIL Philosophy		96	288	136	408	128	384	97	291	134	402	39.6	39.6	38.1	38.1
POLS Political Science		83	249	82	246	56	168	32	96	174	522	109.6	109.6	443.8	443.8
PSLD Public Service Leadership		0	0	0	0	51	153	62	186	79	237	n/a	n/a	27.4	27.4
PSYC Psychology		1,320	3,682	1,491	3,999	1,477	3,887	1,386	3,586	1,500	3,916	13.6	6.4	8.2	9.2
SOCIOLOGY		420	1,260	620	1,860	492	1,476	484	1,452	535	1,605	27.4	27.4	10.5	10.5
SWRK Social Work		101	357	118	396	145	474	128	420	180	594	78.2	66.4	40.6	41.4
WMST Womens Studies		40	120	37	111	61	183	49	147	38	114	-5.0	-5.0	-22.4	-22.4
WRIT Writing		783	2,349	840	2,520	788	2,364	710	2,130	848	2,544	8.3	8.3	19.4	19.4
Total		5,902	17,528	6,325	18,586	6,321	18,485	5,981	17,461	6,503	19,036	10.2	8.6	8.7	9.0

Definitions: Undergrad - all undergraduate courses; Graduate - all graduate courses - by crse. Number
Enrolled - Total number of students enrolled in rubric for term - **totals will be duplicative**
Total SCH - Total number of Semester Credit Hours (enrollment * actual sch) - funded & non-funded

These data were derived using the certified CBM-004 course report to the state - data may differ to other previously published reports.

data sorted by rubric within school		Fall 2010		Fall 2011		Fall 2012		Fall 2013		Fall 2014		Fall 2010 vs. Fall 2014 Percent Change		Fall 2013 vs. Fall 2014 Percent Change	
		Enrolled	Total SCH	Enrolled	Total SCH	Enrolled	Total SCH	Enrolled	Total SCH	Enrolled	Total SCH	Enrolled	Total SCH	Enrolled	Total SCH
Graduate	School of Human Sciences and Humanities														
	ANTH Anthropology	1	3	21	63	6	18	5	15	1	3	0.0	0.0	-80.0	-80.0
	ARTS Arts	15	45	13	39	12	36	7	21	7	21	-53.3	-53.3	0.0	0.0
	COMM Communication	6	18	3	9	0	0	0	0	0	0	-100.0	-100.0	n/a	n/a
	CRCL Cross-Cultural Studies	77	231	73	219	67	201	55	165	47	141	-39.0	-39.0	-14.5	-14.5
	CRIM Criminology	143	429	178	534	146	438	142	426	133	399	-7.0	-7.0	-6.3	-6.3
	DMST Digital Media Studies	150	450	182	546	158	474	125	375	112	336	-25.3	-25.3	-10.4	-10.4
	FRAD Fire Services Admin.	1	3	0	0	0	0	0	0	0	0	-100.0	-100.0	n/a	n/a
	GEOG Geography	4	12	7	21	8	24	1	3	8	24	100.0	100.0	700.0	700.0
	HIST History	107	321	87	261	93	279	93	279	75	225	-29.9	-29.9	-19.4	-19.4
	HLTH Health	83	249	115	345	104	312	90	270	91	273	9.6	9.6	1.1	1.1
	HUMN Humanities	86	258	81	243	75	225	56	168	41	123	-52.3	-52.3	-26.8	-26.8
	LITR Literature	180	540	138	414	157	471	99	297	83	249	-53.9	-53.9	-16.2	-16.2
	PHIL Philosophy	5	15	21	63	17	51	1	3	2	6	-60.0	-60.0	100.0	100.0
	PSYC Psychology	963	2,775	1,108	3,226	1,146	3,335	1,043	3,089	938	2,767	-2.6	-0.3	-10.1	-10.4
	SOCI Sociology	94	282	99	297	128	384	77	231	79	237	-16.0	-16.0	2.6	2.6
WMST Womens Studies	13	39	9	27	1	3	5	15	2	6	-84.6	-84.6	-60.0	-60.0	
Total	1,928	5,670	2,135	6,307	2,118	6,251	1,799	5,357	1,619	4,810	-16.0	-15.2	-10.0	-10.2	

Definitions: Undergrad - all undergraduate courses; Graduate - all graduate courses - by crse. Number
Enrolled - Total number of students enrolled in rubric for term - **totals will be duplicative**
Total SCH - Total number of Semester Credit Hours (enrollment * actual sch) - funded & non-funded

These data were derived using the certified CBM-004 course report to the state - data may differ to other previously published reports.

Total HSH

School of Human Sciences and Humanities	Fall 2010		Fall 2011		Fall 2012		Fall 2013		Fall 2014		Fall 2010 vs. Fall 2014 Percent Change		Fall 2013 vs. Fall 2014 Percent Change	
	Enrolled	Total SCH	Enrolled	Total SCH	Enrolled	Total SCH	Enrolled	Total SCH	Enrolled	Total SCH	Enrolled	Total SCH	Enrolled	Total SCH
ANTH Anthropology	330	990	361	1,083	363	1,089	295	885	298	894	-9.7	-9.7	1.0	1.0
ARTS Arts	590	1,770	556	1,668	573	1,719	479	1,437	480	1,440	-18.6	-18.6	0.2	0.2
COMM Communication	344	1,078	313	982	285	882	301	957	413	1,296	20.1	20.2	37.2	35.4
CRCL Cross-Cultural Studies	77	231	73	219	67	201	55	165	47	141	-39.0	-39.0	-14.5	-14.5
CRIM Criminology	331	993	377	1,131	411	1,233	495	1,485	472	1,416	42.6	42.6	-4.6	-4.6
DMST Digital Media Studies	150	450	182	546	158	474	125	375	112	336	-25.3	-25.3	-10.4	-10.4
FRAD Fire Services Admin.	41	123	52	156	1	3	0	0	0	0	-100.0	-100.0	n/a	n/a
GEOG Geography	85	255	66	198	102	306	84	252	77	231	-9.4	-9.4	-8.3	-8.3
HIST History	488	1,464	437	1,311	444	1,332	404	1,212	504	1,512	3.3	3.3	24.8	24.8
HLTH Health	506	1,518	581	1,743	626	1,878	632	1,896	640	1,920	26.5	26.5	1.3	1.3
HSAF Study Abroad	0	0	0	0	0	0	0	0	2	6	n/a	n/a	n/a	n/a
HUMN Humanities	498	1,494	495	1,485	531	1,593	484	1,452	184	552	-63.1	-63.1	-62.0	-62.0
LITR Literature	472	1,416	406	1,218	388	1,164	352	1,056	333	999	-29.4	-29.4	-5.4	-5.4
NURS Nursing	0	0	0	0	0	0	0	0	51	153	n/a	n/a	n/a	n/a
PHIL Philosophy	101	303	157	471	145	435	98	294	136	408	34.7	34.7	38.8	38.8
POLS Political Science	83	249	82	246	56	168	32	96	174	522	109.6	109.6	443.8	443.8
PSLD Public Service Leadership	0	0	0	0	51	153	62	186	79	237	n/a	n/a	27.4	27.4
PSYC Psychology	2,283	6,457	2,599	7,225	2,623	7,222	2,429	6,675	2,438	6,683	6.8	3.5	0.4	0.1
SOCI Sociology	514	1,542	719	2,157	620	1,860	561	1,683	614	1,842	19.5	19.5	9.4	9.4
SWRK Social Work	101	357	118	396	145	474	128	420	180	594	78.2	66.4	40.6	41.4
WMST Womens Studies	53	159	46	138	62	186	54	162	40	120	-24.5	-24.5	-25.9	-25.9
WRIT Writing	783	2,349	840	2,520	788	2,364	710	2,130	848	2,544	8.3	8.3	19.4	19.4
Total	7,830	23,198	8,460	24,893	8,439	24,736	7,780	22,818	8,122	23,846	3.7	2.8	4.4	4.5

Definitions: Undergrad - all undergraduate courses; Graduate - all graduate courses - by crse. Number Enrolled - Total number of students enrolled in rubric for term - **totals will be duplicative**
Total SCH - Total number of Semester Credit Hours (enrollment * actual sch) - funded & non-funded

These data were derived using the certified CBM-004 course report to the state - data may differ to other previously published reports.

data sorted by rubric within school		Fall 2010		Fall 2011		Fall 2012		Fall 2013		Fall 2014		Fall 2010 vs. Fall 2014 Percent Change		Fall 2013 vs. Fall 2014 Percent Change		
		Enrolled	Total SCH	Enrolled	Total SCH	Enrolled	Total SCH	Enrolled	Total SCH	Enrolled	Total SCH	Enrolled	Total SCH	Enrolled	Total SCH	
Undergrad	School of Science and Computer Engineering															
	ASTR Astronomy & Space Science	102	306	117	351	99	297	82	246	131	393	28.4	28.4	59.8	59.8	
	BIOL Biology	626	1,600	621	1,613	637	1,674	697	1,808	873	2,146	39.5	34.1	25.3	18.7	
	CENG Computer Engineering	175	378	147	310	189	399	324	682	269	567	53.7	50.0	-17.0	-16.9	
	CHEM Chemistry	293	828	256	724	258	731	290	810	499	1,159	70.3	40.0	72.1	43.1	
	CINF Computer Information Sys.	98	294	107	321	119	357	125	375	105	311	7.1	5.8	-16.0	-17.1	
	CSCI Computer Science	338	1,014	374	1,120	342	1,026	389	1,167	544	1,673	60.9	65.0	39.8	43.4	
	ENSC Environmental Science	10	24	9	27	1	3	1	1	3	5	-70.0	-79.2	200.0	400.0	
	GEOL Geology	98	294	134	402	177	531	203	609	264	716	169.4	143.5	30.0	17.6	
	INDH Industrial Hygiene & Safety	61	183	73	219	72	216	86	258	95	285	55.7	55.7	10.5	10.5	
	ITEC Information Technology	0	0	0	0	57	171	80	240	104	312	n/a	n/a	30.0	30.0	
	MATH Mathematics	604	1,812	560	1,680	611	1,833	448	1,344	775	2,421	28.3	33.6	73.0	80.1	
	PHYS Physics	48	112	68	168	92	226	119	293	207	465	331.3	315.2	73.9	58.7	
	STAT Statistics	0	0	0	0	0	0	99	297	111	333	n/a	n/a	12.1	12.1	
	SWEN Software Engineering	15	45	28	84	30	90	29	87	39	117	160.0	160.0	34.5	34.5	
	Total	2,468	6,890	2,494	7,019	2,684	7,554	2,972	8,217	4,019	10,903	62.8	58.2	35.2	32.7	
Graduate	ASTR Astronomy & Space Science	6	18	0	0	0	0	0	0	4	12	-33.3	-33.3	n/a	n/a	
	BIOL Biology	149	428	168	504	160	477	160	471	166	498	11.4	16.4	3.8	5.7	
	BIOT Biotechnology	211	613	251	539	205	455	202	447	190	424	-10.0	-30.8	-5.9	-5.1	
	CENG Computer Engineering	170	498	186	556	153	455	324	972	472	1,406	177.6	182.3	45.7	44.7	
	CHEM Chemistry	57	169	49	147	92	272	154	462	119	357	108.8	111.2	-22.7	-22.7	
	CINF Computer Information Sys.	18	54	0	0	12	36	25	73	24	72	33.3	33.3	-4.0	-1.4	
	CSCI Computer Science	414	1,225	511	1,526	388	1,158	657	1,951	750	2,227	81.2	81.8	14.2	14.1	
	EMGT Engineering Management	86	258	133	399	131	393	149	447	195	585	126.7	126.7	30.9	30.9	
	ENSC Environmental Science	19	57	43	129	40	118	32	96	38	114	100.0	100.0	18.8	18.8	
	GEOL Geology	14	42	16	48	26	78	21	63	21	63	50.0	50.0	0.0	0.0	
	INDH Industrial Hygiene & Safety	29	87	40	120	60	180	63	189	38	114	31.0	31.0	-39.7	-39.7	
	MATH Mathematics	29	87	27	81	12	36	24	72	35	105	20.7	20.7	45.8	45.8	
	PHYS Physics	50	120	29	63	43	89	33	77	38	82	-24.0	-31.7	15.2	6.5	
	SENG Sys. Engineering	108	324	91	273	69	207	76	226	120	360	11.1	11.1	57.9	59.3	
	STAT Statistics	51	153	46	138	53	159	41	123	42	126	-17.6	-17.6	2.4	2.4	
	SWEN Software Engineering	144	432	132	396	228	684	346	1,038	905	2,715	528.5	528.5	161.6	161.6	
		Total	1,555	4,565	1,722	4,919	1,672	4,797	2,307	6,707	3,157	9,260	103.0	102.8	36.8	38.1

Definitions: Undergrad - all undergraduate courses; Graduate - all graduate courses - by crse. Number Enrolled - Total number of students enrolled in rubric for term - **totals will be duplicative**
Total SCH - Total number of Semester Credit Hours (enrollment * actual sch) - funded & non-funded

These data were derived using the certified CBM-004 course report to the state - data may differ to other previously published reports.

Total SCE

data sorted by rubric within school	Fall 2010		Fall 2011		Fall 2012		Fall 2013		Fall 2014		Fall 2010 vs. Fall 2014 Percent Change		Fall 2013 vs. Fall 2014 Percent Change	
	Enrolled	Total SCH	Enrolled	Total SCH	Enrolled	Total SCH	Enrolled	Total SCH	Enrolled	Total SCH	Enrolled	Total SCH	Enrolled	Total SCH
School of Science and Computer Engineering														
ASTR Astronomy & Space Science	108	324	117	351	99	297	82	246	135	405	25.0	25.0	64.6	64.6
BIOL Biology	775	2,028	789	2,117	797	2,151	857	2,279	1,039	2,644	34.1	30.4	21.2	16.0
BIOT Biotechnology	211	613	251	539	205	455	202	447	190	424	-10.0	-30.8	-5.9	-5.1
CENG Computer Engineering	345	876	333	866	342	854	648	1,654	741	1,973	114.8	125.2	14.4	19.3
CHEM Chemistry	350	997	305	871	350	1,003	444	1,272	618	1,516	76.6	52.1	39.2	19.2
CINF Computer Information Sys.	116	348	107	321	131	393	150	448	129	383	11.2	10.1	-14.0	-14.5
CSCI Computer Science	752	2,239	885	2,646	730	2,184	1,046	3,118	1,294	3,900	72.1	74.2	23.7	25.1
EMGT Engineering Management	86	258	133	399	131	393	149	447	195	585	126.7	126.7	30.9	30.9
ENSC Environmental Science	29	81	52	156	41	121	33	97	41	119	41.4	46.9	24.2	22.7
GEOG Geology	112	336	150	450	203	609	224	672	285	779	154.5	131.8	27.2	15.9
INDH Industrial Hygiene & Safety	90	270	113	339	132	396	149	447	133	399	47.8	47.8	-10.7	-10.7
ITEC Information Technology	0	0	0	0	57	171	80	240	104	312	n/a	n/a	30.0	30.0
MATH Mathematics	633	1,899	587	1,761	623	1,869	472	1,416	810	2,526	28.0	33.0	71.6	78.4
PHYS Physics	98	232	97	231	135	315	152	370	245	547	150.0	135.8	61.2	47.8
SENG Sys. Engineering	108	324	91	273	69	207	76	226	120	360	11.1	11.1	57.9	59.3
STAT Statistics	51	153	46	138	53	159	140	420	153	459	200.0	200.0	9.3	9.3
SWEN Software Engineering	159	477	160	480	258	774	375	1,125	944	2,832	493.7	493.7	151.7	151.7
Total	4,023	11,455	4,216	11,938	4,356	12,351	5,279	14,924	7,176	20,163	78.4	76.0	35.9	35.1

Definitions: Undergrad - all undergraduate courses; Graduate - all graduate courses - by crse. Number Enrolled - Total number of students enrolled in rubric for term - **totals will be duplicative**
Total SCH - Total number of Semester Credit Hours (enrollment * actual sch) - funded & non-funded

These data were derived using the certified CBM-004 course report to the state - data may differ to other previously published reports.

data sorted by rubric within school		Fall 2010		Fall 2011		Fall 2012		Fall 2013		Fall 2014		Fall 2010 vs. Fall 2014 Percent Change		Fall 2013 vs. Fall 2014 Percent Change	
		Enrolled	Total SCH	Enrolled	Total SCH	Enrolled	Total SCH	Enrolled	Total SCH	Enrolled	Total SCH	Enrolled	Total SCH	Enrolled	Total SCH
Undergrad	School of Education														
	ECED Early Childhood Education	434	1,302	325	975	357	1,071	334	1,002	267	801	-38.5	-38.5	-20.1	-20.1
	EDUC Education	320	960	271	813	233	699	235	705	205	615	-35.9	-35.9	-12.8	-12.8
	INST Instructional Technology	400	1,200	346	1,038	258	774	295	885	269	807	-32.8	-32.8	-8.8	-8.8
	LLLS Literacy, Language, & Library Sci	611	1,833	589	1,767	484	1,452	455	1,365	446	1,338	-27.0	-27.0	-2.0	-2.0
	SILC Studies in Language & Culture	475	1,425	421	1,263	435	1,305	435	1,305	424	1,272	-10.7	-10.7	-2.5	-2.5
	SPED Special Education	291	873	245	735	277	831	191	573	307	921	5.5	5.5	60.7	60.7
	TCED Teacher Education	856	2,994	915	3,236	822	2,944	928	3,181	857	3,078	0.1	2.8	-7.7	-3.2
	Total	3,387	10,587	3,112	9,827	2,866	9,076	2,873	9,016	2,775	8,832	-18.1	-16.6	-3.4	-2.0
Graduate excluding Doctoral	ADSU Admin. & Supervision	285	847	236	680	189	553	180	514	190	558	-33.3	-34.1	5.6	8.6
	COUN Counseling	287	861	261	783	274	822	311	933	244	732	-15.0	-15.0	-21.5	-21.5
	ECED Early Childhood Education	48	144	72	216	72	216	58	174	66	198	37.5	37.5	13.8	13.8
	EDUC Education	150	450	119	357	86	258	73	219	67	201	-55.3	-55.3	-8.2	-8.2
	INST Instructional Technology	179	537	127	381	136	404	93	279	81	243	-54.7	-54.7	-12.9	-12.9
	LLLS Literacy, Language, & Library Sci	174	518	115	337	18	52	52	154	57	169	-67.2	-67.4	9.6	9.7
	SILC Studies in Language & Culture	103	309	84	252	98	294	66	198	88	264	-14.6	-14.6	33.3	33.3
	SPED Special Education	0	0	10	30	3	9	7	21	6	18	n/a	n/a	-14.3	-14.3
TCED Teacher Education	52	140	46	138	39	117	51	153	16	48	-69.2	-65.7	-68.6	-68.6	
	Total	1,278	3,806	1,070	3,174	915	2,725	891	2,645	815	2,431	-36.2	-36.1	-8.5	-8.1
Doctoral	ADSU Admin. & Supervision	0	0	0	0	0	0	0	0	0	0	n/a	n/a	n/a	n/a
	EDLS Educational Leadership	168	504	143	444	215	654	224	687	182	552	8.3	9.5	-18.8	-19.7
	EDUC Education	0	0	0	0	0	0	0	0	0	0	n/a	n/a	n/a	n/a
	LLLS Literacy, Language, & Library Sci	0	0	0	0	0	0	0	0	0	0	n/a	n/a	n/a	n/a
	Total	168	504	143	444	215	654	224	687	182	552	8.3	9.5	-18.8	-19.7

Definitions: Undergrad - all undergraduate courses; Graduate - all graduate courses - by crse. Number
Enrolled - Total number of students enrolled in rubric for term - **totals will be duplicative**
Total SCH - Total number of Semester Credit Hours (enrollment * actual sch) - funded & non-funded

These data were derived using the certified CBM-004 course report to the state - data may differ to other previously published reports.

Total SOE

School of Education	Fall 2010		Fall 2011		Fall 2012		Fall 2013		Fall 2014		Fall 2010 vs. Fall 2014 Percent Change		Fall 2013 vs. Fall 2014 Percent Change	
	Enrolled	Total SCH	Enrolled	Total SCH	Enrolled	Total SCH	Enrolled	Total SCH	Enrolled	Total SCH	Enrolled	Total SCH	Enrolled	Total SCH
ADSU Admin. & Supervision	285	847	236	680	189	553	180	514	190	558	-33.3	-34.1	5.6	8.6
COUN Counseling	287	861	261	783	274	822	311	933	244	732	-15.0	-15.0	-21.5	-21.5
ECED Early Childhood Education	482	1,446	397	1,191	429	1,287	392	1,176	333	999	-30.9	-30.9	-15.1	-15.1
EDLS Educational Leadership	168	504	143	444	215	654	224	687	182	552	8.3	9.5	-18.8	-19.7
EDUC Education	470	1,410	390	1,170	319	957	308	924	272	816	-42.1	-42.1	-11.7	-11.7
INST Instructional Technology	579	1,737	473	1,419	394	1,178	388	1,164	350	1,050	-39.6	-39.6	-9.8	-9.8
LLLS Literacy, Language, & Library Sci	785	2,351	704	2,104	502	1,504	507	1,519	503	1,507	-35.9	-35.9	-0.8	-0.8
SILC Studies in Language & Culture	578	1,734	505	1,515	533	1,599	501	1,503	512	1,536	-11.4	-11.4	2.2	2.2
SPED Special Education	291	873	255	765	280	840	198	594	313	939	7.6	7.6	58.1	58.1
TCED Teacher Education	908	3,134	961	3,374	861	3,061	979	3,334	873	3,126	-3.9	-0.3	-10.8	-6.2
Total	4,833	14,897	4,325	13,445	3,996	12,455	3,988	12,348	3,772	11,815	-22.0	-20.7	-5.4	-4.3

Total UHCL SCH	68,636	69,855	69,255	70,659	77,026	12.2	9.0
-----------------------	---------------	---------------	---------------	---------------	---------------	-------------	------------



Note:

POLS TRANSFERRED TO HSH FROM BUS as of Fall 2008
 GEOG TRANSFERRED TO HSH FROM SOE as of Fall 2009
 NURS started in Fall 2014