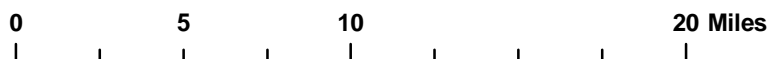


Office of Institutional Effectiveness

2018 Fact Book

Date of Publication: June 2019

University of Houston  Clear Lake



University of Houston-Clear Lake
is located at:

2700 Bay Area Blvd.
Houston, TX 77058
(281) 283-7600

<http://www.uhcl.edu>

Legend



UHCL sites

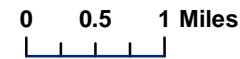


Table of Contents

Section 1 – General Information	Page Number
Overview	1
Mission	2
Strategic Goals	2
University Organization	3
 Section 2 – Academic Indicators	 Page Number
Progress Card	4
Graduation Trends by Level, by Degree Type, by Gender and College	5
Enrollment and Semester Credit Hours (SCH) by College, Course, and Level	15
 Section 3 – Students	 Page Number
Student Five-Year Trend Data	25
Total UHCL Enrollment and SCH by College and Student Level	27
Total UHCL Student Enrollment Demographics	29
Student Distribution by Permanent Residence (Maps)	32
 Section 4 – Faculty & Staff Information	 Page Number
Total UHCL Five-Year Trend Faculty Demographics	39
Full-Time Equivalent Faculty	41
Average Full-Time Faculty Teaching Salary by College and Rank	43
Number of Staff by Employment Status and Occupational Category	45
Faculty Awards	46
Staff Awards	49

Click on the subsection name for quick access using links

Table of Contents

Section 5 – Financial and Educational Resources

Page Number

Current Fund Revenues and Expenditures by Source	52
Annual Tuition and Fees	54
Facilities	55
The Alfred R. Neumann Library	56
Career Services	57
Counseling Services	58
Pearland Enrollment and Semester Credit Hours (SCH) by Term	59
Office of Sponsored Programs	60
Student Financial Aid	61
VA Services	64
Student Life Events and Participation	65

Section 6 – External and Alumni Relations

Page Number

Community College Advisory Council	66
Office of University Advancement	67
Office of Development and Alumni Relations	67
UHCL Alumni Association	67
Map of UHCL Alumni Residents Within the United States, Fall 2018	68
Distinguished Alumni Awards	69
University of Houston-Clear Lake Official Alumni Residency Counts Sorted by State	73

Office of Institutional Effectiveness

Section 1: General Indicators

Section 1 - General Information

Overview

The University of Houston-Clear Lake is a four-year and graduate university serving the upper Texas Gulf Coast region. The Commission on Colleges of the Southern Association of Colleges and Schools accredits the University to award bachelor's, master's, and doctoral degrees.

Authorized by Legislature:	1971
First Student Enrolled:	Fall 1974
President:	Ira K. Blake, Ph.D.
Enrollment:	8,961 (Fall 2018)
Faculty:	65 Professors 100 Associate Professors 88 Assistant Professors 0 Instructors 264 Other Faculty 265 Teaching Assistants 782 Total
¹ Staff:	515 Full Time Benefit-Eligible personnel only
² Alumni:	68,874 (UHCL Official Alumni Count Report--August 1, 2018)
Colleges:	College of Business (BUS) College of Education (COE) College of Human Sciences & Humanities (HSH) College of Science & Engineering (CSE)
Degree Plans:	45 Bachelors, 48 Masters, and 3 Doctoral
Degrees Awarded:	2,458 awarded AY 2018
Budget:	\$170,425,115 (FY 2019) per year (based on 15 UGRD credit hours per
³ Tuition & Fees (Resident):	\$8,557 semester)
Library:	359,650 Number of Books (Titles) 495,792 Number of Volumes (Pieces) 344 ⁴ Print Subscriptions 93,891 e-Journals 212 Research Databases
Investment in Plant:	\$176,728,054

¹The staff number is from the IPEDS Human Resources Data 2018-2019

²Figure provided by the Director, Advancement Services, University Advancement. UHS maintains official alumni data.

³Course Fee and Differential Designated Tuition are excluded.

⁴As of FY 2013, Library statistics were changed from "Current Subscriptions" to "Print Subscriptions" - all journal subscriptions are now under "e-journals."

Section 1 - General Information

UHCL Mission Statement

The University of Houston-Clear Lake is a student-centered, community-minded, partnership-oriented university that offers bachelor's, master's and selected doctoral programs to enhance the educational, economic, and cultural environment of the Houston-Galveston metropolitan region. UH-Clear Lake serves a diverse student body with special emphasis on undergraduate transfer, graduate and international students. The university offers the highest quality instruction and nationally accredited academic programs designed to develop the critical thinking, creative, quantitative, leadership and communication skills of students. The university conducts applied and basic research and engages in community and professional service that support both the economic development and the quality of life of the area. The university is committed to community engagement through partnerships with educational institutions, businesses, government agencies, and nonprofit organizations.

Approved by University Council 12-10-09

Approved by UH System Board of Regents 2-16-10

Approved by Texas Higher Education Coordinating Board 4-29-10

UHCL Strategic Goals

The University of Houston-Clear Lake will...

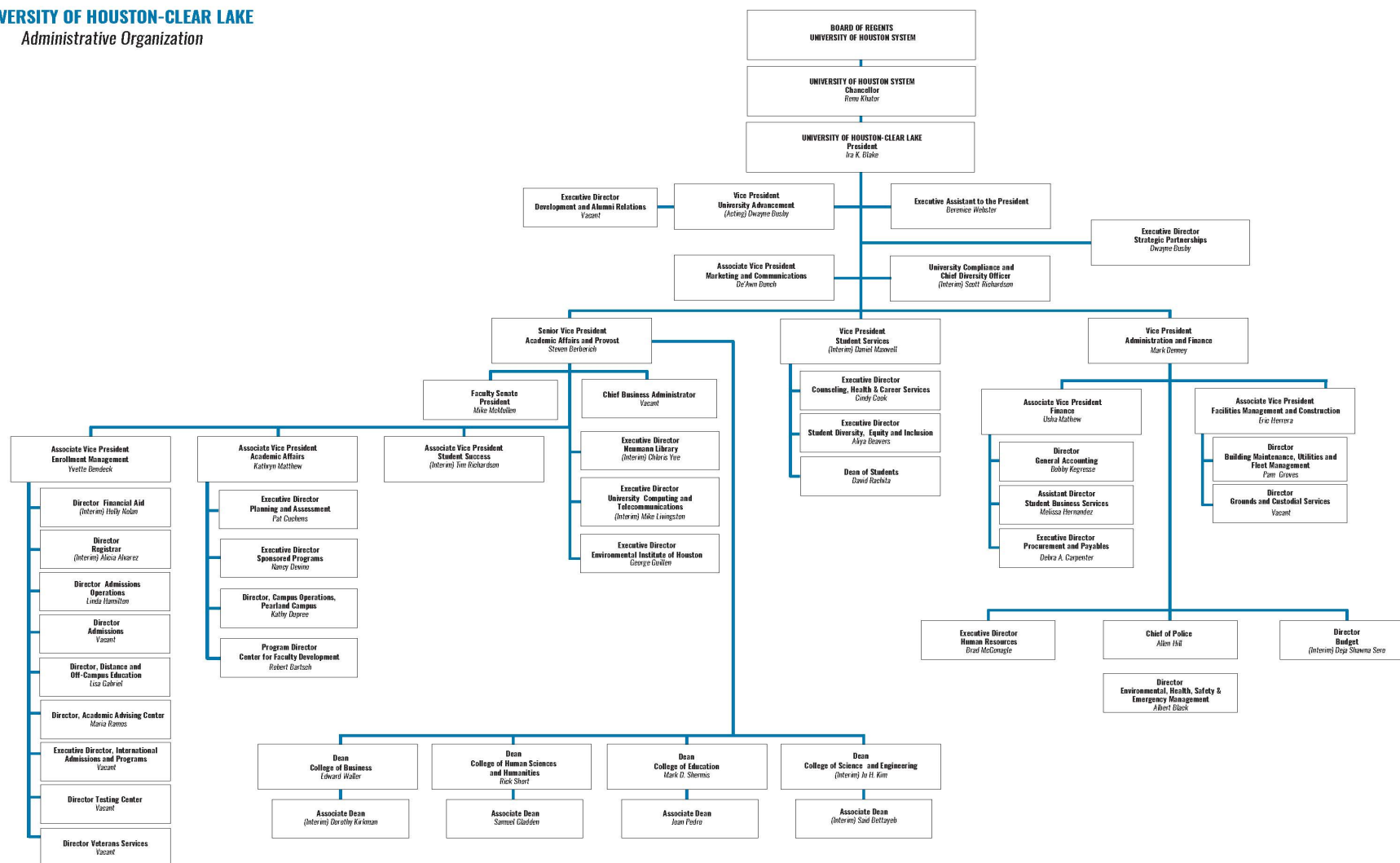
- Goal 1: Achieve academic excellence through the offering of high quality programs delivered by an outstanding faculty and staff in an environment supportive of teaching and research
- Goal 2: Provide a supportive student-centered campus environment focused on student access and success.
- Goal 3: Enhance a campus which is attractive, functional, safe and supportive of the university's mission; promote an environment for effective collaboration; and maintain fiscal responsibility.
- Goal 4: Build mutually beneficial partnerships through outreach activities for the benefit of faculty, staff, students, alumni and the community.

Last approved by University Council on 5-13-10

To see all of the UHCL Strategic Goals and Strategies, click on the link below:

<https://www.uhcl.edu/about/administrative-offices/institutional-effectiveness/assessment/documents/uhcl-strategic-goals.pdf>

UNIVERSITY OF HOUSTON-CLEAR LAKE
Administrative Organization



Updated 11.6.20

Office of Institutional Effectiveness

Section 2: Academic Indicators

Section 2 - Academic Indicators

University of Houston-Clear Lake Progress Card AY 2018-19

Annual Performance					Increase/Decrease	
1. Nationally Competitive University	Base Year 2007-08	2016-2017	2017-2018	2018-2019	From Last Year	From Base Year
1.a. Total Research Expenditures	\$851,000	\$852,000	\$1,033,728	\$1,762,978	\$729,250	\$911,978
1.b. Federal Research Expenditures	\$159,000	\$826,000	\$752,156	\$893,652	\$141,497	\$734,652
1.c. Total Sponsored Program Expenditures	\$2,518,000	\$3,829,000	\$3,280,306	\$3,497,859	\$217,553	\$979,859
1.d. Number of Specialized Accredited Programs	21	25	29	31	2	10
1.e. Master's Degrees Awarded Compared to Peers (UHCL/Peer Group)	997 / 457	1258 / 481	1263 / 545	1233/588	-30 / 43	236 / 131
1.f. Total Sponsored Program Awards	\$5,253,323	\$3,993,000	\$4,033,450	\$3,941,798	-\$91,652	-\$1,311,525
2.A. UH System: Student Success						
2.A.a. Total Enrollment (Headcount)	7,522	8,669	8,542	8,961	419	1,439
2.A.b. Transfer Retention Rate (First Year)	82.5%	80.3%	82.6%	82.8%	0.2%	0.3%
2.A.c. Transfer Graduation Rate (4 Years)	73.5%	71.4%	73.6%	66.0%	-7.6%	-7.5%
2.A.d. Total Degrees Awarded	2,131	2,579	2,595	2,443	-152	312
2.A.e. Student Satisfaction Index	82%	89%	90%	89%	-1.0%	7.0%
2.B. UHCL Student Success						
2.B.a. FTIC Retention Rate (First Year) ²	70.8%	1	74.0%	73.9%	-0.1%	3.1%
2.B.b. Hispanic Transfer Retention Rate (First Year)	87%	84.5%	83.5%	84.7%	1.2%	-2.2%
2.B.c. Hispanic Transfer Graduation Rate (4 Years)	80.0%	72.6%	69.7%	67.0%	-2.7%	-13.0%
2.B.d. Bachelor's Degrees Awarded	1,154	1,285	1,296	1,387	91	233
2.B.e. Total Semester Credit Hours	63,035	7969000%	78,772	80,998	2,226	17,963
2.B.f. Percent of Graduating Students Responding "Yes" to "Would you recommend UHCL to friends and family?"	89% (ugrd) 92% (grad) 90% (overall)	99% (ugrd) 85% (grad) 92% (overall)	95% (ugrd) 88% (grad) 91% (overall)	95% (ugrd) 85% (grad) 91% (overall)	0% (ugrd) -3% (grad) 0% (overall)	6% (ugrd) -7% (grad) 1% (overall)
2.B.g. Certification Rate of Teacher Education Graduates	92.8%	100.0%	100.0%	99.4%	-0.6%	6.6%
2.B.h. Course Completion Rates	92.8%	94.7%	94.9%	94.6%	-0.3%	1.8%
3. Community Advancement						
3.a. % Baccalaureate Graduates Enrolled in Graduate Courses/Employed in TX within 1 Yr ³	84%	83%	66%	63%	-3%	-21%
3.b. Number of Courses with Community Engagement Activity	245	258	243	242	-1	-3
3.c. Number of Community Partnerships	80	507	558	554	-4	474
4. Competitive Resources						
4.a. Total State Appropriations per FTE Student	\$6,276	\$5,336	\$5,995	\$6,388	\$393	\$112
4.b. Total Expenditures per FTE Student	\$13,717	\$16,562	\$18,396	\$18,554	\$158	\$4,837
4.c. Endowment	\$18,891,454	\$24,597,842	\$26,463,371	\$29,525,613	\$3,062,242	\$10,634,159
4.d. Total Annual Giving (Cash Basis)	\$614,000	\$634,216	\$1,060,158	\$1,074,477	\$14,319	\$460,477

Notes:

- Cells with no shading are for measures with no change in performance or de minimis reductions (less than 1%).
- 2015-16 is the first year for which an FTIC retention rate was available and will therefore serve as the base year for this measure.
- The THECB changed the methodology for calculating this measure. Previously, only baccalaureate recipients were included. Starting with the 2017-18 60X30 measure, all degree level recipients will be included.

Section 2 - Academic Indicators

Graduation Trends by Level, by Degree Type, by Gender AY 2013-14 - AY 2017-18

College of Business

Level of Award	Degree Name	Male					Female					Total Degree Count				
		2013-14	2014-15	2015-16	2016-17	2017-18	2013-14	2014-15	2015-16	2016-17	2017-18	2013-14	2014-15	2015-16	2016-17	2017-18
Bachelor	Accounting BS	26	39	33	20	29	61	68	69	62	66	87	107	102	82	95
	Accounting BS - Pearland	0	3	5	0	2	7	8	4	7	9	7	11	9	7	11
	Accounting BS PB	2	3	5	5	5	1	2	3	3	2	3	5	8	8	7
	Accounting BS PB - Pearland	0	0	0	0	0	2	0	0	0	0	2	0	0	0	0
	Environmental Management BS	4	8	8	7	10	8	7	3	4	2	12	15	11	11	12
	Finance BS	19	27	21	22	14	12	5	14	14	8	31	32	35	36	22
	Finance BS Online	4	3	2	8	8	1	0	3	1	2	5	3	5	9	10
	Finance BS PB	1	0	0	0	0	2	0	1	0	1	3	0	1	0	1
	Finance BS PB - Online	0	0	0	0	0	0	0	2	0	0	0	0	2	0	0
	General Business BS	11	10	7	10	10	15	13	17	26	17	26	23	24	36	27
	General Business BS Online	1	5	4	4	5	3	8	8	10	11	4	13	12	14	16
	Healthcare Admin BS PB	1	0	0	0	0	0	1	0	0	1	1	1	0	0	1
	Healthcare Administration BS	9	6	8	4	10	31	32	53	40	48	40	38	61	44	58
	Healthcare Services BAS	2	3	3	2	3	7	6	12	10	11	9	9	15	12	14
	Legal Studies BS	2	4	5	8	8	12	15	12	13	16	14	19	17	21	24
	Legal Studies BS PB	0	0	0	0	0	0	1	0	0	0	0	1	0	0	0
	Management BS	23	12	21	30	22	34	55	38	35	71	57	67	59	65	93
	Management BS - Pearland	1	1	1	3	3	1	1	0	1	2	2	2	1	4	5
	Management BS PB	1	0	0	0	0	0	0	0	0	0	1	0	0	0	0
	Marketing BS	7	13	12	12	13	11	14	22	21	31	18	27	34	33	44
	Marketing BS PB	0	0	0	0	1	0	0	0	1	0	0	0	0	1	1
	Mgmt Information Systems BS	15	16	20	19	17	2	10	9	4	5	17	26	29	23	22
	Mgmt Information Systems BS PB	0	0	1	2	0	0	0	0	0	0	0	0	1	2	0
	Political Science BS	0	0	0	0	0	0	0	0	0	0	0	0	0	0	0
	Professional Accounting BS	4	1	1	1	1	4	3	4	3	2	8	4	5	4	3
	Subtotal	133	154	157	157	161	214	249	274	255	305	347	403	431	412	466
Master	Accounting MS	18	17	10	13	11	36	29	15	14	22	54	46	25	27	33
	Business Admin MBA-Online	15	13	13	9	16	21	9	11	13	12	36	22	24	22	28
	Business Administration MBA	46	43	30	33	32	41	34	23	19	26	87	77	53	52	58
	Environmental Management MS	3	1	6	4	3	1	4	4	1	2	4	5	10	5	5
	Finance MS	11	7	9	8	11	12	6	4	1	3	23	13	13	9	14
	Finance MS-Online	1	1	0	2	0	1	2	4	1	1	2	3	4	3	1
	Healthcare Administration MHA	10	9	13	7	17	17	11	19	13	28	27	20	32	20	45
	Healthcare BusAdmin MHA/MBA	18	9	12	5	10	21	13	16	9	21	39	22	28	14	31
	Human Resource Mgmt MA-Online	1	1	1	3	2	7	5	10	9	14	8	6	11	12	16
	Management Information Syst MS	24	52	91	72	48	25	36	35	57	35	49	88	126	129	83
	Professional Accounting MS	4	1	1	1	1	4	3	4	3	2	8	4	5	4	3
	Subtotal	151	154	186	157	151	186	152	145	140	166	337	306	331	297	317

Note: Degree names followed by PB are Post-Baccalaureate degree programs only.

Degree names followed by Pearland are Pearland campus programs only.

Degree names followed by Online are online degree programs only.

Alief, Alvin, Cape Center, San Jac N, Sugar Land, and Cinco Ranch are satellite campuses of UHCL.

Section 2 - Academic Indicators

Graduation Trends by Level, by Degree Type, by Gender AY 2013-14 - AY 2017-18 (continued)

College of Education

Level of Award	Degree Name	Male					Female					Total Degree Count				
		2013-14	2014-15	2015-16	2016-17	2017-18	2013-14	2014-15	2015-16	2016-17	2017-18	2013-14	2014-15	2015-16	2016-17	2017-18
Bachelor	Early Childhood Care and Education	0	0	0	0	0	0	0	0	0	1	0	0	0	0	1
	EC Program Leadership BAS	0	0	0	0	0	4	2	3	3	4	4	2	3	3	4
	Educator of Young Children BAS	0	0	0	0	0	0	2	2	2	2	0	2	2	2	2
	Interdisc Studies - Pearland	1	1	1	0	0	15	30	22	21	29	16	31	23	21	29
	Interdisciplinary Studies BS	15	12	10	12	3	244	232	206	190	201	259	244	216	202	204
	Young Children w/Disabilit BAS	0	0	0	0	0	1	0	1	1	0	1	0	1	1	0
	Subtotal	16	13	11	12	3	264	266	234	217	237	280	279	245	229	240
Master	Counseling MS	5	5	1	0	1	32	28	31	9	16	37	33	32	9	17
	Counseling MS - Alief	0	2	3	0	0	6	5	4	0	3	6	7	7	0	3
	Counseling MS - Pearland	1	1	0	3	0	2	2	7	15	1	3	3	7	18	1
	Curriculum and Instruction MS	1	0	1	1	0	12	4	4	10	11	13	4	5	11	11
	Early Childhood Education MS	0	0	1	1	1	21	15	10	10	12	21	15	11	11	13
	Educational Management MS	6	6	2	8	2	16	16	18	30	13	22	22	20	38	15
	Educational Management MS-Online	0	0	0	1	0	0	0	1	0	4	0	0	1	1	4
	Educational Mgmt MS -Pearland	1	2	0	1	0	4	6	4	2	2	5	8	4	3	2
	Educational Mgmt MS-Alief ISD	5	4	1	5	3	9	11	3	10	3	14	15	4	15	6
	Educational Mgmt MS-Galena Park	0	0	0	0	0	0	0	0	1	1	0	0	0	1	1
	Educational Mgmt MS-San Jac N.	1	1	1	0	0	10	2	0	2	1	11	3	1	2	1
	Educational Mgmt MS-Cinco Ranch	0	2	1	0	0	7	4	3	0	1	7	6	4	0	1
	Instructional Tech MS - Online	4	4	3	1	1	11	5	2	5	6	15	9	5	6	7
	Instructional Technology MS	1	1	1	1	1	3	3	4	2	5	4	4	5	3	6
	Multicultural Studies in Ed MS	0	3	0	4	0	5	15	3	17	2	5	18	3	21	2
	Reading MS	0	0	1	0	0	3	0	1	2	3	3	0	2	2	3
	School Library/Info Science MS	1	1	0	1	0	4	19	5	7	18	5	20	5	8	18
	Subtotal	26	32	16	27	9	145	135	100	122	102	171	167	116	149	111
Doctoral	Educational Leadership EdD	1	6	1	2	0	8	9	9	13	12	9	15	10	15	12
	Educational Leadership EdD-CR	0	2	0	0	1	0	6	3	1	1	0	8	3	1	2
	Educational Leadership EdD-FB	0	0	0	1	3	0	0	0	0	7	0	0	0	1	10
	Subtotal	1	8	1	3	4	8	15	12	14	20	9	23	13	17	24

Note: Degree names followed by PB are Post-Baccalaureate degree programs only.

Degree names followed by Pearland are Pearland campus programs only.

Degree names followed by Online are online degree programs only.

Alief, Alvin, Cape Center, San Jac N, Sugar Land, and Cinco Ranch are satellite campuses of UHCL.

Section 2 - Academic Indicators

Graduation Trends by Level, by Degree Type, by Gender AY 2013-14 - AY 2017-18 (continued)

College of Human Sciences and Humanities

Level of Award	Degree Name	Male					Female					Total Degree Count				
		2013-14	2014-15	2015-16	2016-17	2017-18	2013-14	2014-15	2015-16	2016-17	2017-18	2013-14	2014-15	2015-16	2016-17	2017-18
Bachelor	Anthropology BS	3	1	0	1	1	12	9	7	3	4	15	10	7	4	5
	Anthropology BS PB	0	0	0	0	0	0	0	1	0	0	0	0	1	0	0
	Anthropology BS-Online	0	0	0	0	2	0	0	0	0	3	0	0	0	0	5
	Art and Design BFA	12	7	9	6	10	26	18	19	22	24	38	25	28	28	34
	Art and Design BFA PB	0	1	1	0	0	0	1	0	0	1	0	2	1	0	1
	Art and Design BFA/Art EC-12	0	2	0	0	2	4	5	5	10	3	4	7	5	10	5
	Behavioral Science BS	11	8	10	14	15	8	16	12	19	25	19	24	22	33	40
	Behavioral Science BS PB	0	0	0	0	0	0	0	0	0	0	0	0	0	0	0
	Behavioral Science BS-Pearland	0	0	0	0	1	2	3	3	3	4	2	3	3	3	5
	Communication BA	12	10	8	15	13	18	21	20	30	27	30	31	28	45	40
	Communication BA PB	0	0	0	0	0	0	0	0	0	0	0	0	0	0	0
	Criminology BS	10	13	9	18	9	15	20	18	22	26	25	33	27	40	35
	Criminology BS - Online	2	1	2	0	0	4	2	3	0	0	6	3	5	0	0
	Criminology BS - Pearland	1	1	3	1	2	4	3	3	4	4	5	4	6	5	6
	Fitness & Human Perform BS PB	0	0	0	0	0	0	0	0	0	0	0	0	0	0	0
	Fitness & Human Performance BS	27	26	16	30	26	46	34	32	33	43	73	60	48	63	69
	Geography BS 7-12 SocStudies	0	0	0	0	0	1	0	0	0	0	1	0	0	0	0
	Geography BS 8-12 SocStudies	0	1	0	0	0	0	0	0	0	0	0	1	0	0	0
	Geography BS	2	2	3	6	2	5	0	3	3	4	7	2	6	9	6
	Geography BS PB	0	0	0	0	0	0	0	0	0	1	0	0	0	0	1
	History BA	16	8	15	18	16	14	16	17	12	19	30	24	32	30	35
	History BA 7-12 Soc Studies	1	11	2	3	2	0	1	2	2	0	1	12	4	5	2
	History BA 7-12 Hist Cert	0	0	1	0	0	0	0	0	2	0	0	0	1	2	0
	History BA 8-12 Soc Studies	7	2	0	0	0	7	2	0	0	0	14	4	0	0	0
	History BA with 8-12 Hist Cert	0	1	0	0	0	0	0	0	0	0	0	1	0	0	0
	Humanities BA	6	4	4	1	5	11	14	5	3	1	17	18	9	4	6
	Literature BA	2	6	5	9	8	17	15	17	8	15	19	21	22	17	23
	Literature BA PB	0	0	0	0	0	0	0	1	0	0	0	0	1	0	0
	Litr BA 4-8 Eng Lang Arts/Read	0	1	0	0	0	3	1	0	0	2	3	2	0	0	2
	Litr BA 7-12 Engl Lang Arts	0	3	0	1	1	0	1	8	4	3	0	4	8	5	4
	Litr BA 8-12 Engl Lang Arts	1	0	0	0	0	6	2	0	0	0	7	2	0	0	0
	Nursing BSN-Pearland	0	0	0	3	3	0	0	5	14	10	0	0	5	17	13
	Nursing BSN-Pearland PB	0	0	0	0	0	0	0	0	2	1	0	0	0	2	1
	Political Science BS	0	1	0	0	0	1	0	1	0	0	1	1	1	0	0
	Psychology BS	13	17	19	14	24	74	54	60	111	80	87	71	79	125	104
	Psychology BS - Pearland	1	1	1	0	1	9	15	16	7	10	10	16	17	7	11
	Psychology BS PB	0	0	0	0	0	1	0	0	0	0	1	0	0	0	0
	Psychology BS PB - Pearland	1	0	0	0	0	0	0	1	0	0	1	0	1	0	0
	Psychology BS-Online	0	3	0	0	0	9	16	13	0	0	9	19	13	0	0
	Psychology BS-Sugar Land	2	2	1	0	0	9	12	6	2	0	11	14	7	2	0
	Public Service Leadership BS	7	1	0	2	1	3	1	3	2	0	10	2	3	4	1
	Public Srv Leadership-Online	2	4	1	1	1	1	1	4	0	7	3	5	5	1	8
	Social Work BSW	0	0	2	1	2	12	18	20	14	12	12	18	22	15	14
	Sociology BS	4	0	6	1	5	14	5	10	13	9	18	5	16	14	14
	Women's Studies BA	0	0	0	0	0	2	3	1	1	0	2	3	1	1	0
	Women's Studies BA PB	0	0	0	0	0	0	0	1	1	0	0	0	0	1	0
	Subtotal	143	138	118	145	152	338	309	316	347	338	481	447	434	492	490

Note: Degree names followed by PB are Post-Baccalaureate degree programs only.

Degree names followed by Pearland are Pearland campus programs only.

Degree names followed by Online are online degree programs only.

Alief, Alvin, Cape Center, San Jac N, Sugar Land, and Cinco Ranch are satellite campuses of UHCL.

Section 2 - Academic Indicators

Graduation Trends by Level, by Degree Type, by Gender AY 2013-14 - AY 2017-18 (continued)

College of Human Sciences and Humanities (continued)

Level of Award	Degree Name	Male					Female					Total Degree Count				
		2013-14	2014-15	2015-16	2016-17	2017-18	2013-14	2014-15	2015-16	2016-17	2017-18	2013-14	2014-15	2015-16	2016-17	2017-18
Master	Behavior Analysis MA	1	1	0	1	2	8	5	10	8	11	9	6	10	9	13
	Behavioral Science MA	0	0	1	0	2	7	1	3	1	3	7	1	4	1	5
	Behavioral Science MA-Pearland	0	0	0	0	1	0	2	0	0	2	0	2	0	0	3
	Clinical Psychology MA	3	4	1	1	3	16	11	17	12	15	19	15	18	13	18
	Criminology MA	5	4	6	3	2	8	13	10	6	4	13	17	16	9	6
	Criminology MA - Pearland	0	2	1	0	1	6	3	3	3	1	6	5	4	3	2
	Cross-Cultural Studies MA	1	2	1	2	1	7	9	3	6	4	8	11	4	8	5
	Digital Media Studies - MA	9	5	4	10	5	13	14	16	12	5	22	19	20	22	10
	Exercise and Health Science MS	10	12	9	15	6	9	4	9	10	9	19	16	18	25	15
	Family Therapy MA	4	1	1	0	3	15	12	9	7	10	19	13	10	7	13
	History MA	7	7	8	2	2	4	8	1	2	6	11	15	9	4	8
	Humanities MA	6	11	5	8	4	11	8	5	2	3	17	19	10	10	7
	Indust/Organizational Psy MA	5	11	13	4	8	20	27	19	10	16	25	38	32	14	24
	Literature MA	8	3	3	5	1	13	5	6	4	4	21	8	9	9	5
	Psychology MA	5	8	10	9	0	12	26	21	26	0	17	34	31	35	0
	Psychology MS	0	0	0	0	5	0	0	0	0	19	0	0	0	0	24
	Psychology MA - Pearland	0	0	1	0	0	1	2	2	3	0	1	2	3	3	0
	Psychology MA - Sugar Land	0	1	0	0	0	2	6	0	1	0	2	7	0	1	0
	School Psychology SSP	1	0	1	1	0	11	10	11	8	7	12	10	12	9	7
	Sociology MA	2	4	5	2	1	12	11	2	13	7	14	15	7	15	8
	Subtotal	67	76	70	63	47	175	177	147	134	126	242	253	217	197	173

Note: Degree names followed by PB are Post-Baccalaureate degree programs only.

Degree names followed by Pearland are Pearland campus programs only.

Degree names followed by Online are online degree programs only.

Alief, Alvin, Cape Center, San Jac N, Sugar Land, and Cinco Ranch are satellite campuses of UHCL.

Section 2 - Academic Indicators

Graduation Trends by Level, by Degree Type, by Gender AY 2013-14 - AY 2017-18 (continued)

College of Science and Engineering

Level of Award	Degree Name	Male					Female					Total Degree Count				
		2013-14	2014-15	2015-16	2016-17	2017-18	2013-14	2014-15	2015-16	2016-17	2017-18	2013-14	2014-15	2015-16	2016-17	2017-18
Bachelor	Biol BA with 7-12 Life Science	0	1	4	2	0	0	2	4	4	8	0	3	8	6	8
	Biol BA with 8-12 Life Science	1	0	0	0	0	1	1	0	0	0	2	1	0	0	0
	Biological Sciences BA	2	3	3	0	3	8	9	1	2	3	10	12	4	2	6
	Biological Sciences BS	13	10	15	14	12	15	26	19	37	38	28	36	34	51	50
	Biological Sciences BS PB	0	1	0	0	2	0	1	0	0	2	0	2	0	0	4
	Chemistry BA	0	1	0	0	0	2	0	0	0	1	2	1	0	0	1
	Chemistry BS	2	1	3	4	7	3	3	5	2	3	5	4	8	6	10
	Chemistry BS PB	0	0	0	0	0	0	0	0	0	0	0	0	0	0	0
	Computer Engineering BS	7	15	20	19	10	2	5	3	5	2	9	20	23	24	12
	Computer Engineering BS PB	1	0	0	2	2	0	0	0	1	0	1	0	0	3	2
	Computer Information System BS	8	18	12	6	16	4	1	0	0	2	12	19	12	6	18
	Computer Science BS	10	12	24	21	28	1	1	5	4	3	11	13	29	25	31
	Computer Science BS PB	0	0	0	2	2	0	0	3	0	1	0	0	3	2	3
	Environmental Science BS	6	7	8	10	11	11	7	15	9	16	17	14	23	19	27
	Environmental Science BS PB	0	3	0	1	1	0	0	0	0	0	0	3	0	1	1
	Information Technology BS	0	0	0	0	2	0	0	0	0	1	0	0	0	0	3
	Information Technology BAS	17	11	5	12	10	6	7	1	2	1	23	18	6	14	11
	Information Technology BAS PB	0	1	1	0	0	0	0	0	0	0	0	1	1	0	0
	Information Technology BAS-Pearland	0	0	1	0	2	0	0	0	0	0	0	0	1	0	2
	Math BA with 4-8 Mathematics	2	0	1	2	0	3	0	1	2	5	0	2	4	5	5
	Math BA with 7-12 Mathematics	0	0	2	0	1	0	0	3	1	2	0	0	5	1	3
	Math BA with 8-12 Mathematics	0	0	0	0	0	1	1	0	0	0	1	1	0	0	0
	Math BS with 7-12 Mathematics	0	0	0	0	0	0	3	1	1	0	0	3	1	1	0
	Math BS with 8-12 Mathematics	0	0	0	0	0	1	2	0	0	0	1	2	0	0	0
	Mathematical Science BA	2	1	0	2	2	2	1	0	1	2	4	2	0	3	4
	Mathematical Science BA PB	0	0	0	0	0	0	1	0	0	0	0	1	0	0	0
	Mathematical Science BS	4	2	9	7	6	6	3	6	11	9	10	5	15	18	15
	Physics BS	5	7	9	6	7	0	0	0	0	1	5	7	9	6	8
	Physics PB	0	1	0	0	0	0	0	0	0	0	0	1	0	0	0
	Subtotal	80	95	117	110	124	66	74	67	82	100	146	169	184	192	224

Note: Degree names followed by PB are Post-Baccalaureate degree programs only.

Degree names followed by Pearland are Pearland campus programs only.

Degree names followed by Online are online degree programs only.

Alief, Alvin, Cape Center, San Jac N, Sugar Land, and Cinco Ranch are satellite campuses of UHCL.

Section 2 - Academic Indicators

Graduation Trends by Level, by Degree Type, by Gender AY 2013-14 - AY 2017-18 (continued)

College of Science and Engineering (continued)

Level of Award	Degree Name	Male					Female					Total Degree Count				
		2013-14	2014-15	2015-16	2016-17	2017-18	2013-14	2014-15	2015-16	2016-17	2017-18	2013-14	2014-15	2015-16	2016-17	2017-18
Master	Biological Sciences MS	3	6	7	4	9	12	15	7	10	8	15	21	14	14	17
	Biotechnology MS	6	8	9	10	8	14	25	17	10	13	20	33	26	20	21
	Chemistry MS	12	16	8	4	2	13	10	11	5	4	25	26	19	9	6
	Computer Engineering MS	23	82	79	103	56	13	37	21	38	24	36	119	100	141	80
	Computer Information System MS	2	5	9	7	14	3	2	1	5	5	5	7	10	12	19
	Computer Science MS	40	75	55	54	54	31	46	40	59	48	71	121	95	113	102
	Engineering Management MS	21	18	51	55	38	10	9	28	28	23	31	27	79	83	61
	Engineering Mgmt MS-Online	4	0	1	4	0	2	2	0	2	0	6	2	1	6	0
	Environmental Science MS-Online	1	1	5	3	1	1	1	4	2	4	2	2	9	5	5
	Environmental Science MS	13	4	8	7	3	15	12	9	9	12	28	16	17	16	15
	Mathematical Science MS	3	4	1	1	3	2	3	0	2	1	5	7	1	3	4
	Physics MS	1	3	2	3	5	2	0	3	1	0	3	3	5	4	5
	Software Engineering MS	30	112	123	85	37	8	48	56	46	23	38	160	179	131	60
	Software Engineering MS-Online	5	4	0	0	1	0	1	1	0	1	5	5	1	0	2
	Statistics MS	3	2	4	5	2	3	2	5	3	7	6	4	9	8	9
	Systems Engineering MS	7	5	6	10	5	2	3	3	4	2	9	8	9	14	7
Subtotal		174	345	368	355	238	131	216	206	224	175	305	561	574	579	413

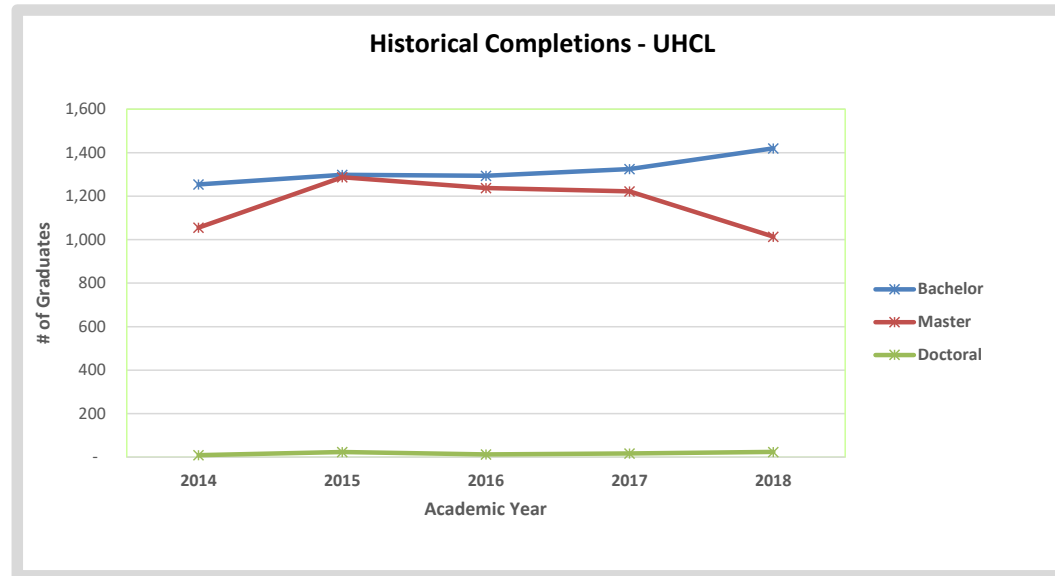
Note: Degree names followed by PB are Post-Baccalaureate degree programs only.

Degree names followed by Pearland are Pearland campus programs only.

Degree names followed by Online are online degree programs only.

Alief, Alvin, Cape Center, San Jac N, Sugar Land, and Cinco Ranch are satellite campuses of UHCL.

Graduation Trends by Level, by Degree Type, by Gender AY 2013-14 - AY 2017-18 (continued)



Total UHCL Graduates					
	2014	2015	2016	2017	2018
Bachelor	1,254	1,298	1,294	1,325	1,420
Master	1,055	1,287	1,238	1,222	1,014
Doctoral	9	23	13	17	24
Total	2,318	2,608	2,545	2,564	2,458

Section 2 - Academic Indicators

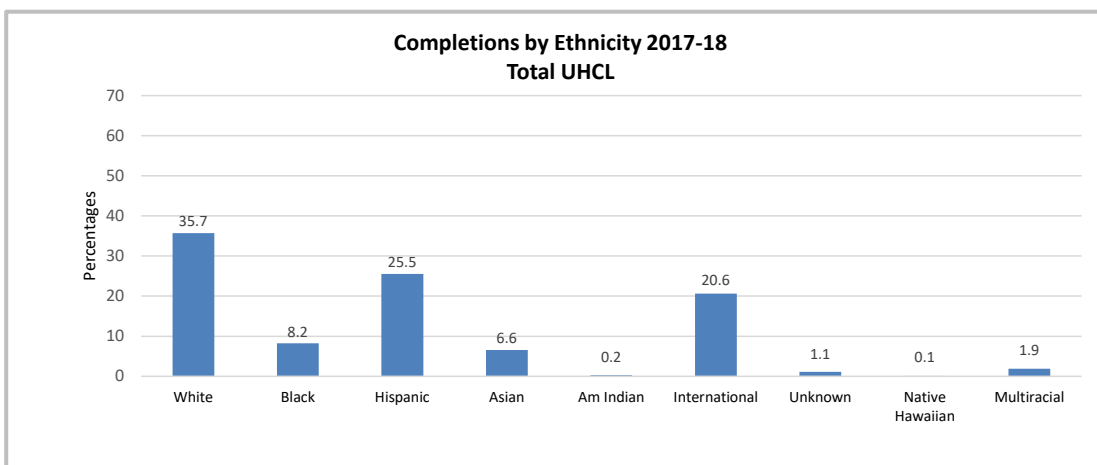
Graduation Trends by Level, by Degree Type, by Gender AY 2013-14 - AY 2017-18 (continued)

Total UHCL Report

	Bachelor		Master		Doctoral		Total	
	<i>n</i>	%	<i>n</i>	%	<i>n</i>	%	<i>n</i>	%
Sex								
Male	440	31.0	445	43.9	4	16.7	889	36.2
Female	980	69.0	569	56.1	20	83.3	1,569	63.8
Total	1,420	100.0	1,014	100.0	24	100.0	2,458	100.0

Ethnicity/R Ethnicity/Race								
White	622	43.8	246	24.3	10	41.7	878	35.7
Black	124	8.7	71	7.0	7	29.2	202	8.2
Hispanic	507	35.7	116	11.4	4	16.7	627	25.5
Asian	89	6.3	72	7.1	0	0.0	161	6.6
Am Indian	4	0.3	2	0.2	0	0.0	6	0.2
International	22	1.5	485	47.8	0	0.0	507	20.6
Unknown	17	1.2	10	1.0	0	0.0	27	1.1
Native Hawaiian	3	0.2	0	0.0	0	0.0	3	0.1
Multiracial	32	2.3	12	1.2	3	12.5	47	1.9
Total	1,420	100.0	1,014	100.0	24	100.0	2,458	100.0

Age								
<23	107	7.5	2	0.2	0	0.0	109	4.4
23-26	562	39.6	428	42.2	0	0.0	990	40.3
27-30	313	22.0	286	28.2	1	4.2	600	24.4
30+	438	30.8	298	29.4	23	95.8	759	30.9
Total	1,420	100.0	1,014	100.0	24	100.0	2,458	100.0



Section 2 - Academic Indicators

Graduation Trends by Level, by Degree Type, by Gender AY 2013-14 - AY 2017-18 (continued)

Total UHCL Report (continued)

Level of Award	Ethnicity/Race	Total Degree Count				
		2013-14	2014-15	2015-16	2016-17	2017-18
Bachelor	White	631	610	608	545	622
	Black	84	84	95	106	124
	Hispanic	405	449	417	503	507
	Asian	69	85	94	85	89
	Am Indian	6	4	1	5	4
	International	21	26	27	19	22
	Unknown	10	11	14	21	17
	Native Hawaiian	1	5	0	2	3
	Multiracial	27	24	38	39	32
Subtotal		1,254	1,298	1,294	1,325	1,420
Master	White	351	313	252	251	246
	Black	113	102	74	63	71
	Hispanic	125	128	141	127	116
	Asian	87	71	69	63	72
	Am Indian	1	2	1	1	2
	International	349	647	684	684	485
	Unknown	9	9	6	8	10
	Native Hawaiian	0	0	0	2	0
	Multiracial	20	15	11	23	12
Subtotal		1,055	1,287	1,238	1,222	1,014
Doctoral	White	5	13	8	9	10
	Black	3	3	2	3	7
	Hispanic	1	5	3	3	4
	Asian	0	0	0	2	0
	Am Indian	0	0	0	0	0
	International	0	0	0	0	0
	Unknown	0	0	0	0	0
	Native Hawaiian	0	0	0	0	0
	Multiracial	0	2	0	0	3
Subtotal		9	23	13	17	24
Total	White	987	936	868	805	878
	Black	200	189	171	172	202
	Hispanic	531	582	561	633	627
	Asian	156	156	163	150	161
	Am Indian	7	6	2	6	6
	International	370	673	711	703	507
	Unknown	19	20	20	29	27
	Native Hawaiian	1	5	0	4	3
	Multiracial	47	41	49	62	47
Total		2,318	2,608	2,545	2,564	2,458

Section 2 - Academic Indicators

Graduation Trends by Level, by Degree Type, by Gender AY 2013-14 - AY 2017-18 (continued)

Total UHCL Report (continued)

Level of Award	Sex	Total Degree Count				
		2013-14	2014-15	2015-16	2016-17	2017-18
Bachelor	Male	372	400	403	424	440
	Female	882	898	891	901	980
	Subtotal	1,254	1,298	1,294	1,325	1,420
Master	Male	418	607	640	602	445
	Female	637	680	598	620	569
	Subtotal	1,055	1,287	1,238	1,222	1,014
Doctoral	Male	1	8	1	3	4
	Female	8	15	12	14	20
	Subtotal	9	23	13	17	24
Total	Male	791	1,015	1,044	1,029	889
	Female	1,527	1,593	1,501	1,535	1,569
	Total	2,318	2,608	2,545	2,564	2,458

Section 2 - Academic Indicators

Enrollment and Semester Credit Hours (SCH) by College, Course Number, and Level Fall 2014 - Fall 2018

Definitions: Undergrad - all undergraduate courses; Graduate - all graduate courses - by course number
 Enrolled - Total number of students enrolled in rubric for term - **totals will be duplicative**
 Total SCH - Total number of Semester Credit Hours (enrollment * actual sch) - funded & non-funded

These data were derived using the certified CBM-004.

												5-Year Change		1-Year Change	
												Fall 2014 vs. Fall 2018 Change		Fall 2017 vs. Fall 2018 Change	
		Fall 2014		Fall 2015		Fall 2016		Fall 2017		Fall 2018					
Undergraduate	College of Business	Enrolled	SCH	Enrolled	SCH	Enrolled	SCH	Enrolled	SCH	Enrolled	SCH	Enrolled	SCH	Enrolled	SCH
	ACCT Accounting	934	2,802	958	2,874	946	2,838	962	2,886	952	2,856	18	54	-10	-30
	AFSC Air Force Service Care	0	0	2	4	0	0	1	2	0	0	n/a	n/a	-1	-2
	BAPA Business & Public Admin.	2	4	2	4	1	3	50	150	64	192	62	188	14	42
	DSCI Decision Sciences	492	1,476	513	1,539	471	1,413	470	1,410	467	1,401	-25	-75	-3	-9
	ECON Economics	345	1,035	424	1,272	448	1,344	428	1,284	437	1,311	92	276	9	27
	ENVR Environmental Mgmt	92	276	75	225	61	183	53	159	86	258	-6	-18	33	99
	FINC Finance	346	1,038	451	1,353	377	1,131	436	1,308	450	1,350	104	312	14	42
	HADM Healthcare Admin.	278	834	349	1,047	288	864	306	918	295	885	17	51	-11	-33
	ISAM Information Sys. Admin. & Mgmt	436	1,308	416	1,248	439	1,317	448	1,344	490	1,470	54	162	42	126
	LEGL Legal Studies	243	729	219	657	316	948	292	876	340	1,020	97	291	48	144
	MGMT Management	990	2,970	866	2,598	953	2,859	1,007	3,021	937	2,811	-53	-159	-70	-210
	MKTG Marketing	386	1,158	480	1,440	536	1,608	551	1,653	661	1,983	275	825	110	330
	UGRD Total BUS	4,544	13,630	4,755	14,261	4,836	14,508	5,004	15,011	5,179	15,537	635	1,907	175	526
Graduate	ACCT Accounting	344	1,032	271	813	227	681	214	642	278	834	-66	-198	64	192
	BAPA Business & Public Admin.	43	129	32	92	15	39	60	178	157	471	114	342	97	293
	DSCI Decision Sciences	138	414	117	351	125	375	31	93	67	201	-71	-213	36	108
	ECON Economics	91	273	102	306	71	213	46	138	89	267	-2	-6	43	129
	ENVR Environmental Mgmt	43	129	48	144	31	93	45	135	46	138	3	9	1	3
	FINC Finance	198	594	157	471	141	423	135	405	153	459	-45	-135	18	54
	HADM Healthcare Admin.	337	1,011	316	948	287	861	307	921	323	969	-14	-42	16	48
	HMRS Human Resource Mgmt	68	204	63	189	61	183	116	348	168	504	100	300	52	156
	ISAM Information Sys. Admin. & Mgmt	776	2,328	841	2,523	642	1,926	473	1,419	330	990	-446	-1338	-143	-429
	LEGL Legal Studies	17	51	10	30	11	33	25	75	11	33	-6	-18	-14	-42
	MGMT Management	321	963	225	675	227	681	176	528	163	489	-158	-474	-13	-39
	MKTG Marketing	148	444	117	351	84	252	30	90	18	54	-130	-390	-12	-36
	GRAD Total BUS	2,524	7,572	2,299	6,893	1,922	5,760	1,658	4,972	1,803	5,409	-721	-2,163	145	437

Section 2 - Academic Indicators

Enrollment and Semester Credit Hours (SCH) by College, Course Number, and Level Fall 2014 - Fall 2018 (continued)

Definitions: Undergrad - all undergraduate courses; Graduate - all graduate courses - by course number
 Enrolled - Total number of students enrolled in rubric for term - **totals will be duplicative**
 Total SCH - Total number of Semester Credit Hours (enrollment * actual sch) - funded & non-funded

These data were derived using the certified CBM-004.

Total											5-Year Change		1-Year Change	
	Fall 2014		Fall 2015		Fall 2016		Fall 2017		Fall 2018		Fall 2014 vs. Fall 2018 Change		Fall 2017 vs. Fall 2018 Change	
	Enrolled	SCH	Enrolled	SCH	Enrolled	SCH	Enrolled	SCH	Enrolled	SCH	Enrolled	SCH	Enrolled	SCH
College of Business														
ACCT Accounting	1,278	3,834	1,229	3,687	1,173	3,519	1,176	3,528	1,230	3,690	-48	-144	54	162
AFSC Air Force Service Care	0	0	2	4	0	0	1	2	0	0	n/a	n/a	-1	-2
BAPA Business & Public Admin.	45	133	34	96	16	42	110	328	221	663	176	530	111	335
DSCI Decision Sciences	630	1,890	630	1,890	596	1,788	501	1,503	534	1,602	-96	-288	33	99
ECON Economics	436	1,308	526	1,578	519	1,557	474	1,422	526	1,578	90	270	52	156
ENVR Environmental Mgmt	135	405	123	369	92	276	98	294	132	396	-3	-9	34	102
FINC Finance	544	1,632	608	1,824	518	1,554	571	1,713	603	1,809	59	177	32	96
HADM Healthcare Admin.	615	1,845	665	1,995	575	1,725	613	1,839	618	1,854	3	9	5	15
HMRS Human Resource Mgmt	68	204	63	189	61	183	116	348	168	504	100	300	52	156
ISAM Information Sys. Admin. & Mgmt	1,212	3,636	1,257	3,771	1,081	3,243	921	2,763	820	2,460	-392	-1176	-101	-303
LEGL Legal Studies	260	780	229	687	327	981	317	951	351	1,053	91	273	34	102
MGMT Management	1,311	3,933	1,091	3,273	1,180	3,540	1,183	3,549	1,100	3,300	-211	-633	-83	-249
MKTG Marketing	534	1,602	597	1,791	620	1,860	581	1,743	679	2,037	145	435	98	294
Total BUS	7,068	21,202	7,054	21,154	6,758	20,268	6,662	19,983	6,982	20,946	-86	-256	320	963

Section 2 - Academic Indicators

Enrollment and Semester Credit Hours (SCH) by College, Course Number, and Level Fall 2014 - Fall 2018 (continued)

Definitions: Undergrad - all undergraduate courses; Graduate - all graduate courses - by course number
 Enrolled - Total number of students enrolled in rubric for term - **totals will be duplicative**
 Total SCH - Total number of Semester Credit Hours (enrollment * actual sch) - funded & non-funded

These data were derived using the certified CBM-004.

												5-Year Change		1-Year Change	
												Fall 2014 vs. Fall 2018 Change		Fall 2017 vs. Fall 2018 Change	
		Fall 2014		Fall 2015		Fall 2016		Fall 2017		Fall 2018					
Undergraduate	College of Education	Enrolled	SCH	Enrolled	SCH	Enrolled	SCH	Enrolled	SCH	Enrolled	SCH	Enrolled	SCH	Enrolled	SCH
	COUN -Counseling	0	0	0	0	0	0	13	39	12	36	n/a	n/a	-1	-3
	ECED Early Childhood Education	267	801	331	993	315	945	299	897	303	909	36	108	4	12
	EDUC Education	205	615	224	672	177	531	215	645	229	687	24	72	14	42
	INST Instructional Technology	269	807	283	849	322	966	327	981	320	960	51	153	-7	-21
	LLLS Literacy, Language, & Library Sci.	446	1,338	460	1,380	438	1,314	404	1,212	439	1,317	-7	-21	35	105
	SILC Studies in Language & Culture	424	1,272	460	1,380	427	1,281	407	1,221	541	1,623	117	351	134	402
	SPED Special Education	307	921	307	921	272	816	279	837	343	1,029	36	108	64	192
	TCED Teacher Education	857	3,078	715	2,614	758	2,581	803	2,605	904	2,695	47	-383	101	90
	UGRD Total COE	2,775	8,832	2,780	8,809	2,709	8,434	2,747	8,437	3,091	9,256	316	424	344	819
Graduate	ADSU Admin. & Supervision	190	558	155	451	147	423	171	495	119	339	-71	-219	-52	-156
	COUN Counseling	244	732	191	573	168	504	135	405	166	498	-78	-234	31	93
	ECED Early Childhood Education	66	198	43	129	29	87	40	120	30	90	-36	-108	-10	-30
	EDUC Education	67	201	71	213	61	183	45	135	29	87	-38	-114	-16	-48
	INST Instructional Technology	81	243	90	270	96	288	107	321	53	155	-28	-88	-54	-166
	LLLS Literacy, Language, & Library Sci.	57	169	66	198	77	231	105	315	83	249	26	80	-22	-66
	SILC Studies in Language & Culture	88	264	85	255	51	153	39	117	44	132	-44	-132	5	15
	SPED Special Education	6	18	7	21	6	18	7	21	1	3	-5	-15	-6	-18
	TCED Teacher Education	16	48	33	99	46	138	23	69	34	102	18	54	11	33
	GRAD Total	815	2,431	741	2,209	681	2,025	672	1,998	559	1,655	-256	-776	-113	-343
Doctoral	EDCI Curriculum & Instruction	0	0	27	81	25	75	45	75	46	138	n/a	n/a	1	63
	EDLS Educational Leadership	182	552	208	627	169	507	123	507	150	453	-32	-99	27	-54
	DOCT Total COE	182	552	235	708	194	582	168	582	196	591	14	39	28	9

Section 2 - Academic Indicators

Enrollment and Semester Credit Hours (SCH) by College, Course Number, and Level Fall 2014 - Fall 2018 (continued)

Definitions: Undergrad - all undergraduate courses; Graduate - all graduate courses - by course number
 Enrolled - Total number of students enrolled in rubric for term - **totals will be duplicative**
 Total SCH - Total number of Semester Credit Hours (enrollment * actual sch) - funded & non-funded

These data were derived using the certified CBM-004.

Total											5-Year Change		1-Year Change	
	Fall 2014		Fall 2015		Fall 2016		Fall 2017		Fall 2018		Fall 2014 vs. Fall 2018 Change		Fall 2017 vs. Fall 2018 Change	
	Enrolled	SCH	Enrolled	SCH	Enrolled	SCH	Enrolled	SCH	Enrolled	SCH	Enrolled	SCH	Enrolled	SCH
College of Education														
ADSU Admin. & Supervision	190	558	155	451	147	423	171	495	119	339	-71	-219	-52	-156
COUN Counseling	244	732	191	573	168	504	148	444	178	534	-66	-198	30	90
ECED Early Childhood Education	333	999	374	1,122	344	1,032	339	1,017	333	999	0	0	-6	-18
EDCI Curriculum & Instruction	0	0	27	81	25	75	45	135	46	138	n/a	n/a	1	3
EDLS Educational Leadership	182	552	208	627	169	507	123	375	150	453	-32	-99	27	78
EDUC Education	272	816	295	885	238	714	260	780	258	774	-14	-42	-2	-6
INST Instructional Technology	350	1,050	373	1,119	418	1,254	434	1,302	373	1,115	23	65	-61	-187
LLLS Literacy, Language, & Library Sci.	503	1,507	526	1,578	515	1,545	509	1,527	522	1,566	19	59	13	39
SILC Studies in Language & Culture	512	1,536	545	1,635	478	1,434	446	1,338	585	1,755	73	219	139	417
SPED Special Education	313	939	314	942	278	834	286	858	344	1,032	31	93	58	174
TCED Teacher Education	873	3,126	748	2,713	804	2,719	826	2,674	938	2,797	65	-329	112	123
Total COE	3,772	11,815	3,756	11,726	3,584	11,041	3,587	10,945	3,846	11,502	74	-313	259	557

Section 2 - Academic Indicators

Enrollment and Semester Credit Hours (SCH) by College, Course Number, and Level Fall 2014 - Fall 2018 (continued)

Definitions: Undergrad - all undergraduate courses; Graduate - all graduate courses - by course number
 Enrolled - Total number of students enrolled in rubric for term - **totals will be duplicative**
 Total SCH - Total number of Semester Credit Hours (enrollment * actual sch) - funded & non-funded

These data were derived using the certified CBM-004.

	Fall 2014		Fall 2015		Fall 2016		Fall 2017		Fall 2018		5-Year Change		1-Year Change	
											Fall 2014 vs. Fall 2018 Change		Fall 2017 vs. Fall 2018 Change	
	Enrolled	SCH	Enrolled	SCH	Enrolled	SCH	Enrolled	SCH	Enrolled	SCH	Enrolled	SCH	Enrolled	SCH
Undergraduate														
College of Human Sciences and Humanities														
ANTH Anthropology	297	891	326	978	335	1,005	372	1,116	424	1,272	127	381	52	156
ARTS Arts	473	1,419	524	1,572	608	1,824	642	1,926	676	2,028	203	609	34	102
COMM Communication	427	1,338	483	1,518	524	1,620	535	1,668	516	1,623	89	285	-19	-45
CRIM Criminology	339	1,017	393	1,179	355	1,065	464	1,392	447	1,341	108	324	-17	-51
GEOG Geography	69	207	73	219	78	234	74	222	94	282	25	75	20	60
HIST History	429	1,287	519	1,557	538	1,614	562	1,686	565	1,695	136	408	3	9
HLTH Fitness and Human Performance	549	1,647	571	1,713	644	1,932	722	2,166	724	2,172	175	525	2	6
HSAF Study Abroad	2	6	0	0	0	0	0	0	1	3	-1	-3	n/a	n/a
HUMN Humanities	143	429	293	879	290	870	285	855	175	525	32	96	-110	-330
LITR Literature	250	750	264	792	218	654	245	735	319	957	69	207	74	222
NURS Nursing	51	153	77	231	82	246	60	180	125	375	74	222	65	195
PHIL Philosophy	134	402	88	264	88	264	77	231	183	549	49	147	106	318
POLS Political Science	174	522	212	636	352	1,056	328	984	321	963	147	441	-7	-21
PSLD Public Service Leadership	79	237	87	261	72	216	84	252	136	408	57	171	52	156
PSYC Psychology	1,500	3,916	1,419	3,753	1,430	3,922	1,461	3,969	1,622	4,540	122	624	161	571
SOCI Sociology	535	1,605	525	1,575	442	1,326	473	1,419	393	1,179	-142	-426	-80	-240
SPAN Spanish	0	0	4	12	9	27	0	0	11	33	n/a	n/a	n/a	n/a
SWRK Social Work	180	594	161	552	176	579	190	612	189	639	9	45	-1	27
WGST Women's & Gender Studies	0	0	0	0	0	0	41	123	37	111	n/a	n/a	-4	-12
WMST Womens Studies	38	114	37	111	34	102	0	0	0	0	-38	-114	n/a	n/a
WRIT Writing	848	2,544	955	2,865	1,033	3,099	1,065	3,195	1,080	3,240	232	696	15	45
UGRD Total HSH	6,517	19,078	7,011	20,667	7,308	21,655	7,680	22,731	8,038	23,935	1,521	4,857	358	1,204

Section 2 - Academic Indicators

Enrollment and Semester Credit Hours (SCH) by College, Course Number, and Level Fall 2014 - Fall 2018 (continued)

Definitions: Undergrad - all undergraduate courses; Graduate - all graduate courses - by course number
 Enrolled - Total number of students enrolled in rubric for term - **totals will be duplicative**
 Total SCH - Total number of Semester Credit Hours (enrollment * actual sch) - funded & non-funded

These data were derived using the certified CBM-004.

		Fall 2014		Fall 2015		Fall 2016		Fall 2017		Fall 2018		5-Year Change Fall 2014 vs. Fall 2018 Change		1-Year Change Fall 2017 vs. Fall 2018 Change	
		Enrolled	SCH	Enrolled	SCH	Enrolled	SCH	Enrolled	SCH	Enrolled	SCH	Enrolled	SCH	Enrolled	SCH
Graduate	College of Human Sciences and Humanities														
	ANTH Anthropology	1	3	7	21	1	3	5	15	2	6	1	3	-3	-9
	ARTS Arts	7	21	12	36	3	9	2	6	9	27	2	6	7	21
	BSCI-Behavioral Sciences IS	0	0	0	0	0	0	9	27	0	0	n/a	n/a	-9	-27
	CRCL Cross-Cultural Studies	47	141	44	132	42	126	23	69	15	45	-32	-96	-8	-24
	CRIM Criminology	133	399	74	222	67	201	83	249	94	282	-39	-117	11	33
	DMST Digital Media Studies	112	336	104	312	85	255	47	141	48	144	-64	-192	1	3
	EXHS Exercise and Fitness Sciences	0	0	144	432	106	318	85	255	78	234	n/a	n/a	-7	-21
	GEOG Geography	8	24	5	15	7	21	8	24	10	30	2	6	2	6
	HIST History	75	225	58	174	45	135	36	108	63	189	-12	-36	27	81
	HLTH Health	91	273	0	0	0	0	0	0	0	0	-91	-273	n/a	0
	HUMN Humanities	41	123	25	75	33	99	42	126	35	105	-6	-18	-7	-21
	LITR Literature	83	249	71	213	38	114	55	165	71	213	-12	-36	16	n/a
	PHIL Philosophy	2	6	1	3	2	6	2	6	0	0	-2	-6	-2	-6
	PSYC Psychology	938	2,767	817	2,429	669	2,003	734	2,185	703	2,088	-235	-679	-31	-97
	SOCI Sociology	79	237	70	210	78	234	61	183	58	174	-21	-63	-3	-9
	WGST-Women's & Gender Studies	0	0	0	0	0	0	4	12	4	12	n/a	n/a	0	0
	WMST Womens Studies	2	6	3	9	0	0	0	0	0	0	-2	-6	n/a	0
	WRIT Writing	0	0	0	0	3	9	0	0	0	0	n/a	n/a	n/a	0
Doctoral	GRAD Total HSH	1,619	4,810	1,435	4,283	1,179	3,533	1,196	3,571	1,190	3,549	-429	-1,261	-6	-22
	PSYC Psychology	0	0	0	0	8	24	32	96	55	165	n/a	n/a	23	69
	DOCT Total HSH	0	0	0	0	8	24	32	96	55	165	n/a	n/a	23	n/a

Section 2 - Academic Indicators

Enrollment and Semester Credit Hours (SCH) by College, Course Number, and Level Fall 2014 - Fall 2018 (continued)

Definitions: Undergrad - all undergraduate courses; Graduate - all graduate courses - by course number
 Enrolled - Total number of students enrolled in rubric for term - **totals will be duplicative**
 Total SCH - Total number of Semester Credit Hours (enrollment * actual sch) - funded & non-funded

These data were derived using the certified CBM-004.

Total											5-Year Change		1-Year Change	
	Fall 2014		Fall 2015		Fall 2016		Fall 2017		Fall 2018		Fall 2014 vs. Fall 2018 Change		Fall 2017 vs. Fall 2018 Change	
	Enrolled	SCH	Enrolled	SCH	Enrolled	SCH	Enrolled	SCH	Enrolled	SCH	Enrolled	SCH	Enrolled	SCH
College of Human Sciences and Humanities														
ANTH Anthropology	298	894	333	999	336	1,008	377	1,131	426	1,278	128	384	49	147
ARTS Arts	480	1,440	536	1,608	611	1,833	644	1,932	685	2,055	205	615	41	123
BSCI-Behavioral Sciences IS	0	0	0	0	0	0	9	27	0	0	n/a	n/a	-9	-27
COMM Communication	427	1,338	483	1,518	524	1,620	535	1,668	516	1,623	89	285	-19	-45
CRCL Cross-Cultural Studies	47	141	44	132	42	126	23	69	15	45	-32	-96	-8	-24
CRIM Criminology	472	1,416	467	1,401	422	1,266	547	1,641	541	1,623	69	207	-6	-18
DMST Digital Media Studies	112	336	104	312	85	255	47	141	48	144	-64	-192	1	3
EXHS Exercise and Fitness Sciences	0	0	144	432	106	318	85	255	78	234	n/a	n/a	-7	-21
GEOG Geography	77	231	78	234	85	255	82	246	104	312	27	81	22	66
HIST History	504	1,512	577	1,731	583	1,749	598	1,794	628	1,884	124	372	30	90
HLTH Fitness and Human Performance	640	1,920	571	1,713	644	1,932	722	2,166	724	2,172	84	252	2	6
HSAF Study Abroad	2	6	0	0	0	0	0	0	1	3	-1	-3	n/a	n/a
HUMN Humanities	184	552	318	954	323	969	327	981	210	630	26	78	-117	-351
LITR Literature	333	999	335	1,005	256	768	300	900	390	1,170	57	171	90	270
NURS Nursing	51	153	77	231	82	246	60	180	125	375	74	222	65	195
PHIL Philosophy	136	408	89	267	90	270	79	237	183	549	47	141	104	312
POLS Political Science	174	522	212	636	352	1,056	328	984	321	963	147	441	-7	-21
PSLD Public Service Leadership	79	237	87	261	72	216	84	252	136	408	57	171	52	156
PSYC Psychology	2,438	6,683	2,236	6,182	2,107	5,949	2,227	6,250	2,380	6,793	-58	110	153	543
SOCI Sociology	614	1,842	595	1,785	520	1,560	534	1,602	451	1,353	-163	-489	-83	-249
SPAN Spanish	0	0	4	12	9	27	0	0	11	33	n/a	n/a	n/a	n/a
SWRK Social Work	180	594	161	552	176	579	190	612	189	639	9	45	-1	27
WGST-Women's & Gender Studies	0	0	0	0	0	0	45	135	41	123	n/a	n/a	-4	-12
WMST Womens Studies	40	120	40	120	34	102	0	0	0		-40	-120	n/a	n/a
WRIT Writing	848	2,544	955	2,865	1,036	3,108	1,065	3,195	1,080	3,240	232	696	15	45
Total HSH	8,136	23,888	8,446	24,950	8,495	25,212	8,908	26,398	9,283	27,649	1,147	3,761	375	1,251

Section 2 - Academic Indicators

Enrollment and Semester Credit Hours (SCH) by College, Course Number, and Level Fall 2014 - Fall 2018 (continued)

Definitions: Undergrad - all undergraduate courses; Graduate - all graduate courses - by course number
 Enrolled - Total number of students enrolled in rubric for term - **totals will be duplicative**
 Total SCH - Total number of Semester Credit Hours (enrollment * actual sch) - funded & non-funded

These data were derived using the certified CBM-004.

		Fall 2014		Fall 2015		Fall 2016		Fall 2017		Fall 2018		5-Year Change Fall 2014 vs. Fall 2018 Change		1-Year Change Fall 2017 vs. Fall 2018 Change	
		Enrolled	SCH	Enrolled	SCH	Enrolled	SCH	Enrolled	SCH	Enrolled	SCH	Enrolled	SCH	Enrolled	SCH
		College of Science and Engineering													
Undergraduate	ASTR Astronomy & Space Science	131	393	108	214	119	239	91	189	115	247	-16	-146	24	58
	BIOL Biology	873	2,146	1,004	2,364	1,071	2,625	1,211	2,986	1,303	3,179	430	1033	92	193
	CENG Computer Engineering	269	567	386	813	416	877	414	878	562	1,229	293	662	148	351
	CHEM Chemistry	499	1,159	743	1,708	800	1,821	923	2,063	937	2,139	438	980	14	76
	CINF Computer Information Sys.	105	311	121	363	130	390	180	540	147	441	42	130	-33	-99
	CSCI Computer Science	544	1,673	533	1,673	523	1,637	583	1,872	579	1,844	35	171	-4	-28
	ENGR Engineering	0	0	0	0	23	46	40	80	84	194	n/a	n/a	44	114
	ENSC Environmental Science	3	5	79	157	94	189	87	177	87	175	84	170	0	-2
	GEOL Geology	264	716	300	810	221	619	208	544	249	671	-15	-45	41	127
	INDH Industrial Hygiene & Safety	95	285	139	417	170	510	172	516	142	426	47	141	-30	-90
	ITEC Information Technology	104	312	113	339	181	543	149	447	269	805	165	493	120	358
	MATH Mathematics	775	2,421	924	2,944	1,041	3,338	1,150	3,719	1,214	3,938	439	1517	64	219
	MENG-Mechanical Engineering	0	0	0	0	0	0	10	30	72	204	n/a	n/a	62	174
	PHYS Physics	207	465	315	685	356	762	461	997	408	868	201	403	-53	-129
	STAT Statistics	111	333	173	519	197	591	218	654	199	597	88	264	-19	-57
	SWEN Software Engineering	39	117	31	93	42	126	35	105	45	135	6	18	10	30
UGRD Total CSE		4,019	10,903	4,969	13,099	5,384	14,313	5,932	15,797	6,412	17,092	2,393	6,189	480	1,295

Section 2 - Academic Indicators

Enrollment and Semester Credit Hours (SCH) by College, Course Number, and Level Fall 2014 - Fall 2018 (continued)

Definitions:

Undergrad - all undergraduate courses; Graduate - all graduate courses - by course number

These data were derived using the certified CBM-004.

Enrolled - Total number of students enrolled in rubric for term - **totals will be duplicative**

Total SCH - Total number of Semester Credit Hours (enrollment * actual sch) - funded & non-funded

Graduate	College of Science and Engineering	Fall 2014		Fall 2015		Fall 2016		Fall 2017		Fall 2018		5-Year Change Fall 2014 vs. Fall 2018 Change		1-Year Change Fall 2017 vs. Fall 2018 Change	
		Enrolled	SCH	Enrolled	SCH	Enrolled	SCH	Enrolled	SCH	Enrolled	SCH	Enrolled	SCH	Enrolled	SCH
	ASTR Astronomy & Space Science	4	12	0	0	0	0	0	0	6	18	2	6	n/a	n/a
	BIOL Biology	166	498	142	414	123	369	152	448	148	443	-18	-55	-4	-5
	BIOT Biotechnology	190	424	202	501	147	348	126	310	96	210	-94	-214	-30	-100
	CENG Computer Engineering	472	1,406	576	1,728	632	1,896	309	927	155	455	-317	-951	-154	-472
	CHEM Chemistry	119	357	79	235	61	183	45	135	45	135	-74	-222	0	0
	CINF Computer Information Sys.	24	72	32	96	60	180	56	168	19	57	-5	-15	-37	-111
	CSCI Computer Science	750	2,227	798	2,384	698	2,094	474	1,422	371	1,111	-379	-1,116	-103	-311
	EMGT Engineering Management	195	585	355	1,059	372	1,110	206	618	94	282	-101	-303	-112	-336
	ENSC Environmental Science	38	114	35	105	29	83	29	85	23	67	-15	-47	-6	-18
	GEOL Geology	21	63	11	33	17	51	4	12	12	36	-9	-27	8	24
	INDH Industrial Hygiene & Safety	38	114	59	175	26	78	31	93	20	60	-18	-54	-11	-33
	MATH Mathematics	35	105	20	60	37	111	29	87	36	108	1	3	7	21
	PHYS Physics	38	82	73	161	87	169	76	150	57	125	19	43	-19	-25
	SENG Sys. Engineering	120	360	146	438	115	345	70	210	65	195	-55	-165	-5	-15
	STAT Statistics	42	126	66	198	47	141	44	132	34	102	-8	-24	-10	-30
	SWEN Software Engineering	905	2,715	796	2,388	566	1,698	284	852	135	405	-770	-2,310	-149	-447
	GRAD Total CSE	3,157	9,260	3,390	9,975	3,017	8,856	1,935	5,649	1,316	3,809	-1,841	-5,451	-619	-1,840

Section 2 - Academic Indicators

Enrollment and Semester Credit Hours (SCH) by College, Course Number, and Level Fall 2014 - Fall 2018 (continued)

Definitions: Undergrad - all undergraduate courses; Graduate - all graduate courses - by course number
 Enrolled - Total number of students enrolled in rubric for term - **totals will be duplicative**
 Total SCH - Total number of Semester Credit Hours (enrollment * actual sch) - funded & non-funded

These data were derived using the certified CBM-004.

Total											5-Year Change		1-Year Change	
	Fall 2014		Fall 2015		Fall 2016		Fall 2017		Fall 2018		Fall 2014 vs. Fall 2018 Change		Fall 2017 vs. Fall 2018 Change	
	Enrolled	SCH	Enrolled	SCH	Enrolled	SCH	Enrolled	SCH	Enrolled	SCH	Enrolled	SCH	Enrolled	SCH
College of Science and Engineering														
ASTR Astronomy & Space Science	135	405	108	214	119	239	91	189	121	265	-14	-140	30	76
BIOL Biology	1,039	2,644	1,146	2,778	1,194	2,994	1,363	3,434	1,451	3,622	412	978	88	188
BIOT Biotechnology	190	424	202	501	147	348	126	310	96	210	-94	-214	-30	-100
CENG Computer Engineering	741	1,973	962	2,541	1,048	2,773	723	1,805	717	1,684	-24	-289	-6	-121
CHEM Chemistry	618	1,516	822	1,943	861	2,004	968	2,198	982	2,274	364	758	14	76
CINF Computer Information Sys.	129	383	153	459	190	570	236	708	166	498	37	115	-70	-210
CSCI Computer Science	1,294	3,900	1,331	4,057	1,221	3,731	1,057	3,294	950	2,955	-344	-945	-107	-339
EMGT Engineering Management	195	585	355	1,059	372	1,110	206	618	94	282	-101	-303	-112	-336
ENGR Engineering	0	0	0	0	23	46	40	80	84	194	n/a	n/a	44	114
ENSC Environmental Science	41	119	114	262	123	272	116	262	110	242	69	123	-6	-20
GEOL Geology	285	779	311	843	238	670	212	556	261	707	-24	-72	49	151
INDH Industrial Hygiene & Safety	133	399	198	592	196	588	203	609	162	486	29	87	-41	-123
ITEC Information Technology	104	312	113	339	181	543	149	447	269	805	165	493	120	358
MATH Mathematics	810	2,526	944	3,004	1,078	3,449	1,179	3,806	1,250	4,046	440	1520	71	240
MENG-Mechanical Engineering	0	0	0	0	0	0	10	30	72	204	n/a	n/a	62	174
PHYS Physics	245	547	388	846	443	931	537	1,147	465	993	220	446	-72	-154
SENG Sys. Engineering	120	360	146	438	115	345	70	210	65	195	-55	-165	-5	-15
STAT Statistics	153	459	239	717	244	732	262	786	233	699	80	240	-29	-87
SWEN Software Engineering	944	2,832	827	2,481	608	1,824	319	957	180	540	-764	-2292	-139	-417
Total CSE	7,176	20,163	8,359	23,074	8,401	23,169	7,867	21,446	7,728	20,901	552	738	-139	-545

Office of Institutional Effectiveness

Section 3: Students

Section 3 - Students

Student 5-Year Trend Data

Headcount and Student Credit Hours Fall 2014 to Fall 2018

Colleges' SCH include undeclared majors and are derived from the CBM004 certified class report, where course rubric is used to identify school. Colleges' Headcounts do not include undeclared majors and are derived from the CBM001 certified student report, where CIP code is used to identify college.

Total UHCL

	Fall 2014	Fall 2015	Fall 2016	Fall 2017	Fall 2018
Undergraduate					
Headcount	5,386	5,743	5,860	6,064	6,488
SCH	52,401	56,836	58,910	61,976	65,820
Graduate					
Headcount	3,279	3,163	2,809	2,478	2,473
SCH	24,625	24,068	20,780	16,796	15,178
Total UHCL					
Headcount	8,665	8,906	8,669	8,542	8,961
SCH	77,026	80,904	79,690	78,772	80,998

Total UHCL Headcounts and SCH include undeclared majors.

College of Business

	Fall 2014	Fall 2015	Fall 2016	Fall 2017	Fall 2018
Undergraduate					
Headcount	1,614	1,718	1,720	1,740	1,790
SCH	13,630	14,261	14,508	15,011	15,537
Graduate					
Headcount	932	870	746	824	1,000
SCH	7,572	6,893	5,760	4,972	5,409

Student 5-Year Trend Data (continued)

College of Education

	Fall 2014	Fall 2015	Fall 2016	Fall 2017	Fall 2018
Undergraduate					
Headcount	970	981	967	1,011	1,053
SCH	8,832	8,809	8,434	8,437	9,256
Graduate					
Headcount	519	500	474	425	433
SCH	2,983	2,917	2,607	2,508	2,246

College of Human Sciences and Humanities

	Fall 2014	Fall 2015	Fall 2016	Fall 2017	Fall 2018
Undergraduate					
Headcount	1,714	1,727	1,732	1,745	1,834
SCH	19,036	20,667	21,655	22,731	23,935
Graduate					
Headcount	749	615	518	483	497
SCH	4,810	4,283	3,557	3,667	3,714

College of Science and Engineering

	Fall 2014	Fall 2015	Fall 2016	Fall 2017	Fall 2018
Undergraduate					
Headcount	970	1,195	1,341	1,473	1,713
SCH	10,903	13,099	14,313	15,797	17,092
Graduate					
Headcount	1,079	1,178	1,071	746	543
SCH	9,260	9,975	8,856	5,649	3,809

Section 3 - Students

Total UHCL Enrollment and SCH by College and Student Level - Fall 2014 through Fall 2018

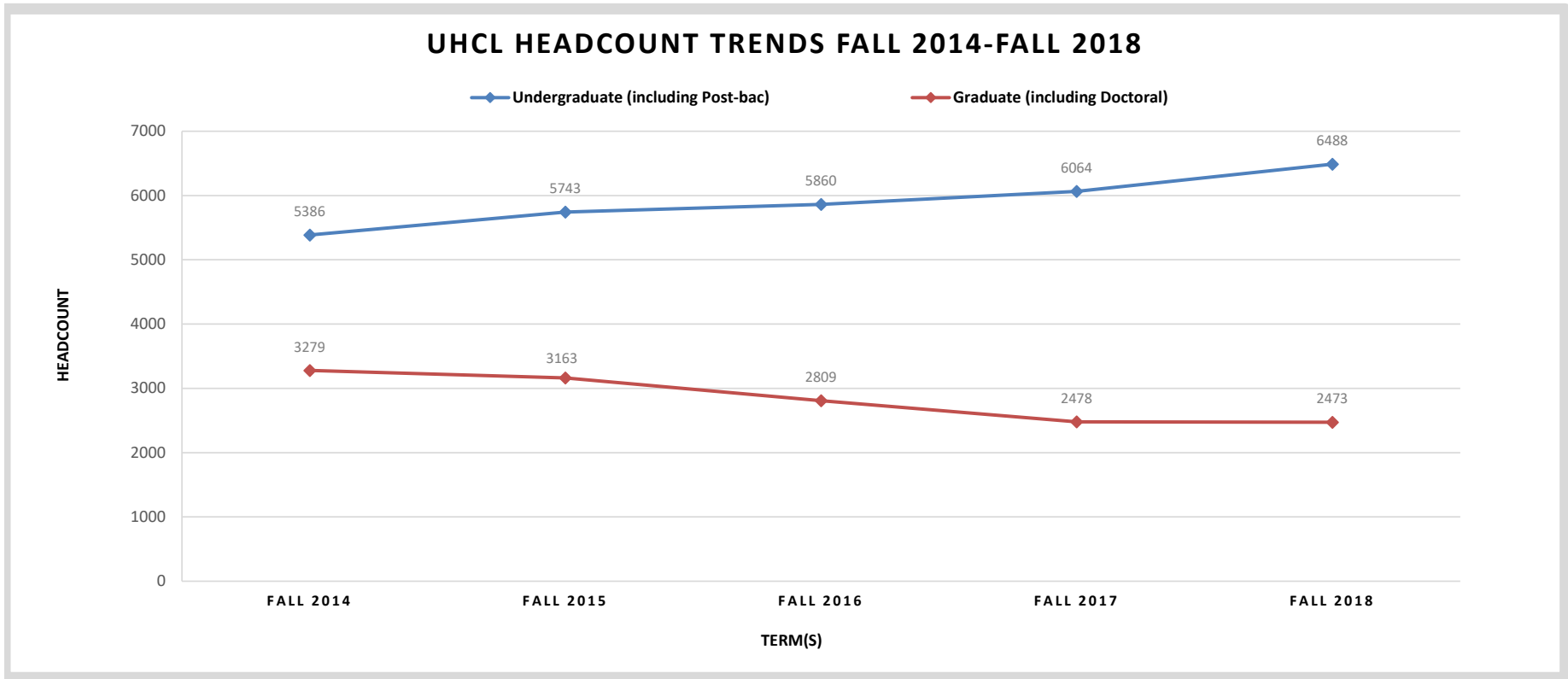
n = Actual number of students; % = Column percent; n/a = Not applicable

Colleges' SCH include undeclared majors and are derived from the CBM004 certified class report, where course rubric is used to identify school. Colleges' Headcounts do not include undeclared majors and are derived from the CBM001 certified student report, where CIP code is used to identify college.

Enrollment and SCH by College and Student Level

College Name	Fall 2014		Fall 2015		Fall 2016		Fall 2017		Fall 2018	
	n	SCH	n	SCH	n	SCH	n	SCH	n	SCH
College of Business	2,546	21,202	2,588	21,154	2,466	20,268	2,564	19,983	2,790	20,946
College of Education	1,489	11,815	1,481	11,726	1,441	11,041	1,436	10,945	1,486	11,502
College of Human Sciences and Humanities	2,463	23,846	2,342	24,950	2,250	25,212	2,228	26,398	2,331	27,649
College of Science and Engineering	2,049	20,163	2,373	23,074	2,412	23,169	2,219	21,446	2,256	20,501
Undecided	118	n/a	122	n/a	100	n/a	95	n/a	98	n/a
UHCL Student Level										
Undergraduate (including Post-bac)	5,386	52,401	5,743	56,836	5,860	58,910	6,064	61,976	6,488	65,820
Graduate (including Doctoral)	3,279	24,625	3,163	24,068	2,809	20,780	2,478	16,796	2,473	15,178
UHCL Total	8,665	77,026	8,906	80,904	8,669	79,690	8,542	78,772	8,961	80,998

Total UHCL Enrollment and SCH by College and Student Level - Fall 2014 through Fall 2018 (continued)



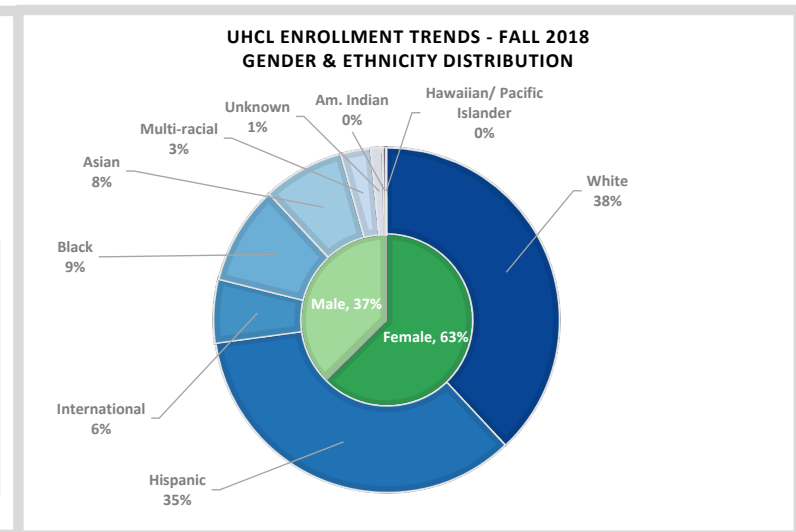
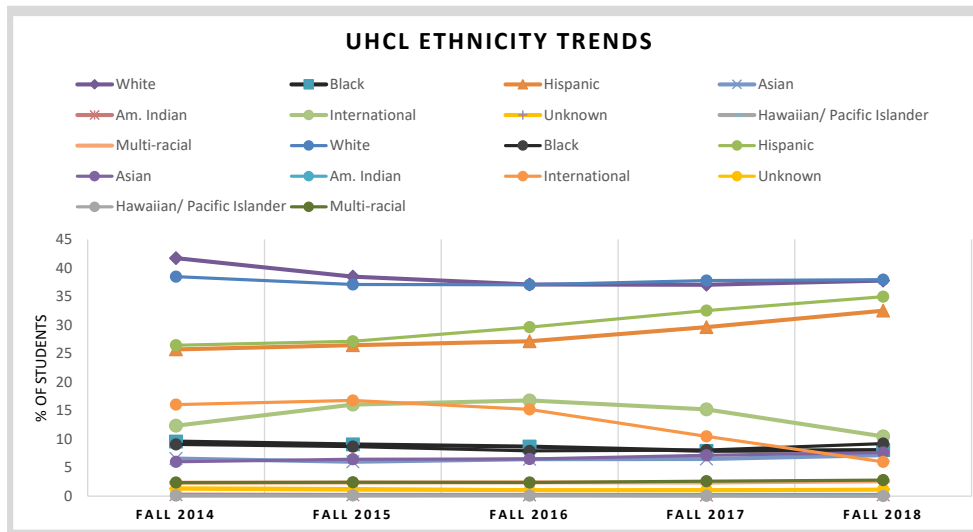
Note: - This report consists of a 5-year demographic study for Fall terms. The demographic data pages present actual UHCL certified data extracted from a PeopleSoft query for inclusion of each student's most current Academic Plan record. Student level data use a CBM-001 extract, and SCH information is derived from the CBM-004 course report. If variance exists when comparing these figures to other previously published reports, it is important to note that these data may follow a different methodology. Totals by college and classification have all been verified with actual certified THECB reports for accuracy.

Total UHCL Student Enrollment Demographics for Fall 2014-Fall 2018

Enrollment by Gender, by Ethnicity, and by Age

Colleges' SCH include undeclared majors and are derived from the CBM004 certified class report, where course rubric is used to identify school. Colleges' Headcounts do not include undeclared majors and are derived from the CBM001 certified student report, where CIP code is used to identify college.

												5-year Change	
		Fall 2014		Fall 2015		Fall 2016		Fall 2017		Fall 2018		Fall 2014 vs. Fall 2018	
		Undergraduate	Graduate	Undergraduate	Graduate	Undergraduate	Graduate	Undergraduate	Graduate	Undergraduate	Graduate	Undergraduate	Graduate
Gender	Male	1,785	1,495	2,005	1,477	2,097	1,253	2,184	992	2,445	908	660	-587
	Female	3,601	1,784	3,738	1,686	3,763	1,556	3,880	1,486	4,043	1,565	442	-219
Ethnic Origin	White	2,388	945	2,475	828	2,472	739	2,498	730	2,567	831	179	-114
	Black	492	294	519	254	482	206	468	221	511	314	19	20
	Hispanic	1,833	458	1,993	424	2,185	381	2,333	443	2,594	538	761	80
	Asian	321	201	377	201	374	190	402	211	443	242	122	41
	Am. Indian	15	5	15	3	12	5	15	3	19	3	4	-2
	International	98	1,292	114	1,380	98	1,219	96	798	81	458	-17	-834
	Unknown	83	26	75	18	73	16	70	26	74	30	-9	4
	Hawaiian/ Pacific Islander	7	1	11	1	7	3	5	0	3	1	-4	0
	Multi-racial	149	57	164	54	157	50	177	46	196	56	47	-1
Age Category	<20	279	0	422	1	419	0	441	0	494	0	215	0
	20-29	3,443	2,132	3,649	2,111	3,809	1,903	4,025	1,547	4,391	1,395	948	-737
	30-39	1,008	684	1,058	626	1,050	538	1,047	566	1,074	653	66	-31
	40-49	446	290	415	275	400	250	397	252	397	301	-49	11
	50-59	178	132	165	124	151	94	121	89	111	105	-67	-27
	60 or more	32	41	34	26	31	24	33	24	21	19	-11	-22



Total UHCL Student Enrollment Demographics for Fall 2014-Fall 2018 (continued)

Enrollment by Status, by Residency, by Tuition Status, by Semester Credit Hours, and by Location

		Fall 2014		Fall 2015		Fall 2016		Fall 2017		Fall 2018		5-year Change Fall 2014 vs. Fall 2018	
		Undergraduate	Graduate	Undergraduate	Graduate	Undergraduate	Graduate	Undergraduate	Graduate	Undergraduate	Graduate	Undergraduate	Graduate
Status	Full-time	2,411	1,773	2,681	1,779	2,735	1,568	2,994	1,044	3,151	803	740	-970
	Part-time	2,975	1,506	3,062	1,384	3,125	1,241	3,070	1,434	3,337	1,670	362	164
¹ Residency	Harris County	2,973	1,160	3,144	998	3,267	863	3,377	915	3,559	1,072	586	-88
	Chambers County	66	16	73	15	71	10	81	8	105	11	39	-5
	Brazoria County	747	217	802	190	795	178	832	166	889	220	142	3
	Galveston County	1,228	300	1,334	287	1,357	273	1,395	306	1,545	320	317	20
	Fort Bend County	153	175	126	190	113	169	126	166	139	164	-14	-11
	Other Texas Counties	119	125	146	116	150	94	143	117	162	161	43	36
	Texas Total	5,286	1,993	5,625	1,796	5,753	1,587	5,954	1,678	6,399	1,948	1,113	-45
	Out of State	11	41	9	39	12	41	17	38	6	63	-5	22
	International	89	1,245	109	1,328	95	1,181	93	762	83	462	-6	-783
² Tuition Status	Resident	4,965	1,845	5,262	1,644	5,361	1,477	5,532	1,562	5,973	1,807	1,008	-38
	Non-resident	111	763	135	888	129	750	128	534	125	326	14	-437
	Foreign waiver or other	310	671	346	631	370	582	404	382	390	340	80	-331
First Time or Transfer	First time in college/First time at new level	234	844	247	832	266	591	280	616	305	694	71	-150
	First time transfer at same level	1,356	0	1,191	0	1,191	0	1,262	0	1,445	0	89	0
	Continuing	3,796	2,435	4,403	2,218	4,403	2,218	4,522	1,862	4,738	1,779	942	-656
Semester Credit Hours (SCH)	3 or fewer	469	591	506	458	429	442	421	581	463	773	-6	182
	4 thru 6	1,053	896	1,029	906	1,007	785	954	839	1,030	885	-23	-11
	7 thru 9	1,283	1,297	1,362	1,357	1,457	1,294	1,412	854	1,508	659	225	-638
	10 thru 12	1,658	468	1,698	425	1,766	287	1,908	193	2,086	152	428	-316
	13 thru 15	773	26	971	16	980	1	1,115	11	1,182	4	409	-22
	16 or more	150	1	177	1	221	0	254	0	219	0	69	-1
SCH by Location	on-campus SCH	38,161	17,002	43,254	17,513	44,942	15,647	47,034	11,958	50,114	9,936	11,953	-7,066
	off-campus SCH	14,240	7,623	13,582	6,555	13,968	5,133	14,942	4,838	15,706	5,242	1,466	-2,381
	Total SCH	52,401	24,625	56,836	24,068	58,910	20,780	61,976	16,796	65,820	15,178	13,419	-9,447
Not Funded	SCH Not Funded	2,384	0	2,522	0	2,524	3	2,651	0	2,021	0	-363	0

Note:

¹ Residency represents the county, state, or foreign country in which the student is a resident as identified by the student as his/her permanent address at the time of application to the institution. This variable should not be used to identify how students are actually charged tuition as other factors are involved in that determination.

² Tuition status indicates the status of the student for tuition purposes. Beginning Fall 2006 new measures were implemented to provide a greater level of accuracy for this variable. However, this variable is not a reliable indicator for how tuition may have actually been charged to students.

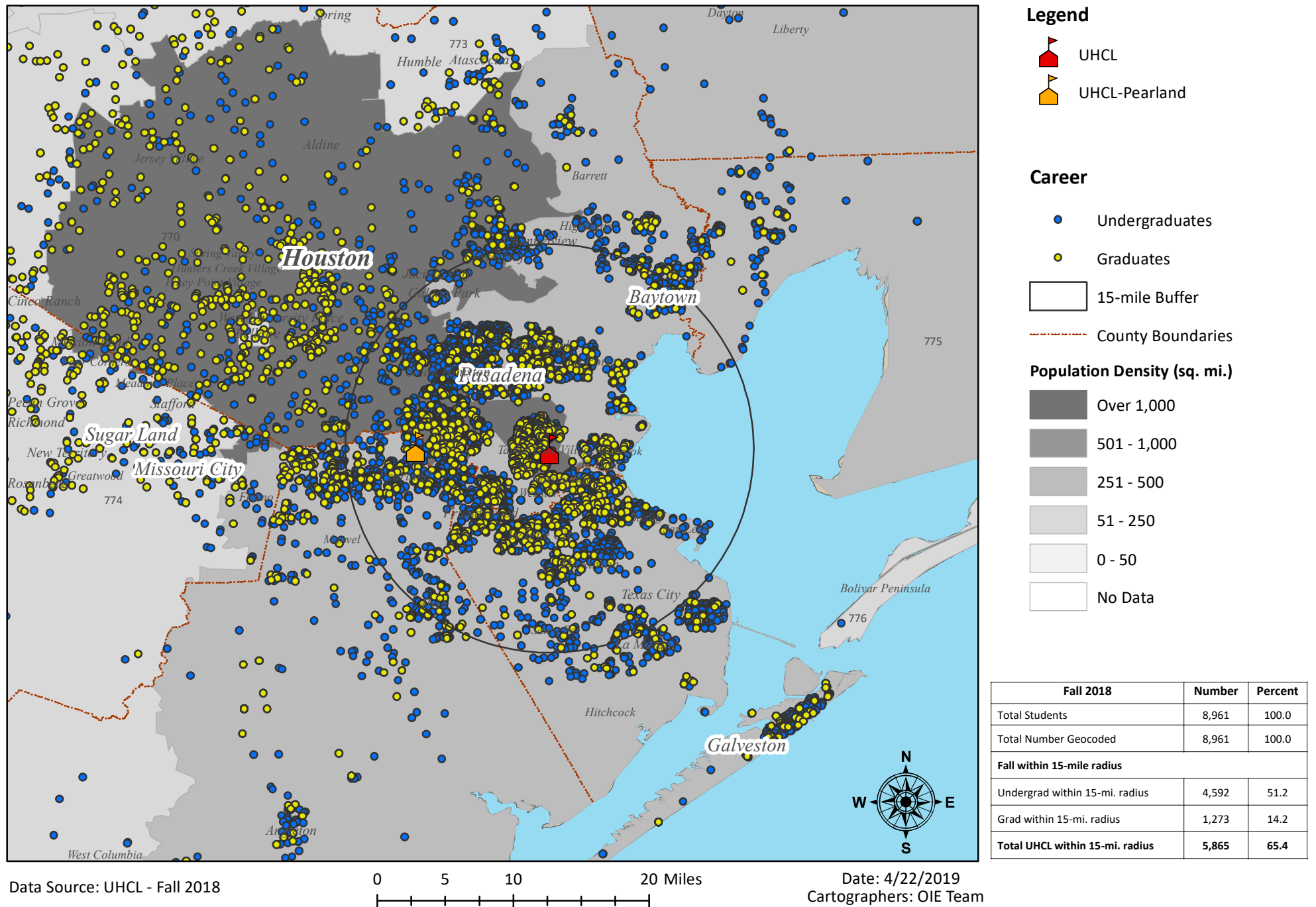
Total UHCL Student Enrollment Demographics for Fall 2014-Fall 2018 (continued)

Enrollment by Student Classification

							5-year Change
		Fall 2014	Fall 2015	Fall 2016	Fall 2017	Fall 2018	Fall 2014 vs. Fall 2018
Classification	Freshman	211	273	274	324	349	138
	Sophomore	287	420	582	593	385	98
	Junior	1,685	1,713	1,798	1,970	2,532	847
	Senior	2,894	3,021	2,916	2,911	2,946	52
	Post-Baccalaureate	309	316	290	266	276	-33
	Master Level	3,188	3,045	2,703	2,369	2,350	-838
	Doctoral Level	91	118	106	109	123	32
	Total	8,665	8,906	8,669	8,542	8,961	296

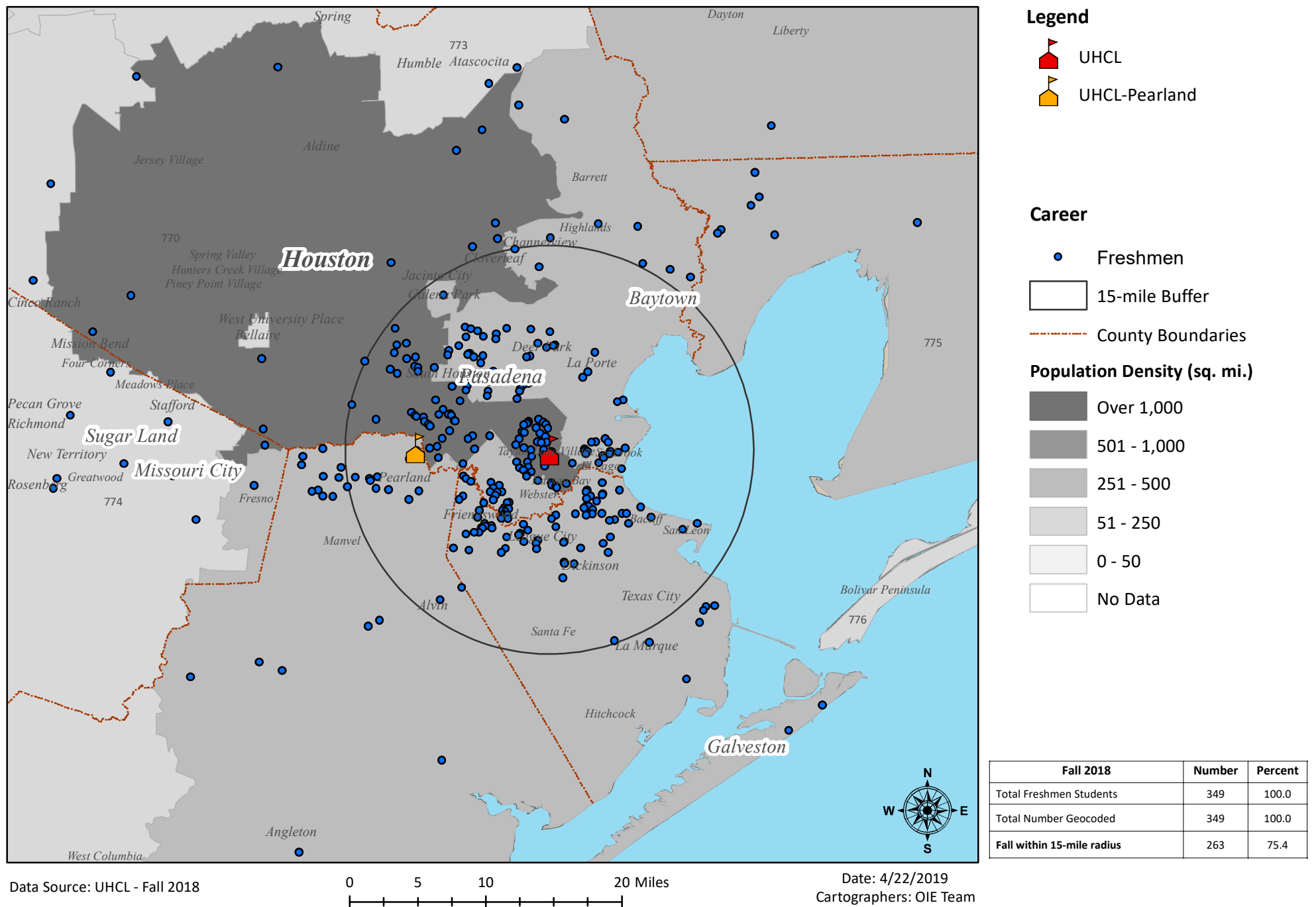
Total UHCL - Student Level Distribution by Residence

Within 15-mile Radius of UHCL, Fall 2018



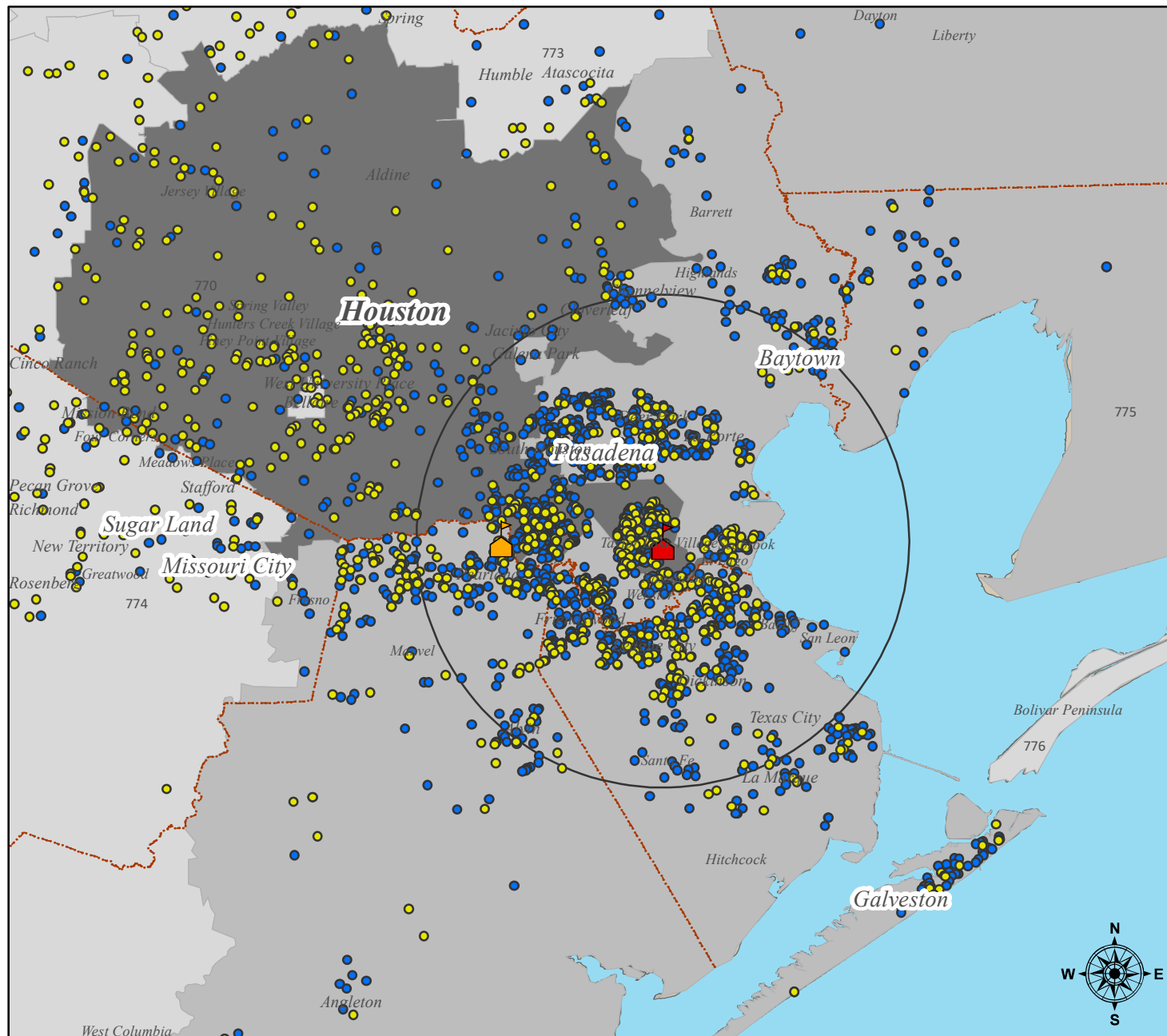
Freshmen/First-Time in College - Student Level Distribution by Residence

Within 15-mile Radius of UHCL, Fall 2018





College of Business - Student Level Distribution by Residence



Within 15-mile Radius of UHCL, Fall 2018





Legend

-  UHCL
-  UHCL-Pearland


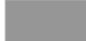
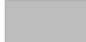
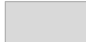
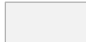

Career

-  Undergraduates
-  Graduates

 15-mile Buffer

 County Boundaries

Population Density (sq. mi.)

-  Over 1,000
-  501 - 1,000
-  251 - 500
-  51 - 250
-  0 - 50
-  No Data

Fall 2018	Number	Percent
Total BUS Students	2,790	100.0
Total Number Geocoded	2,790	100.0
Fall within 15-mile radius		
Undergrad within 15-mi. radius	1,253	44.9
Grad within 15-mi. radius	466	16.7
Total BUS within 15-mi. radius	1,719	61.6

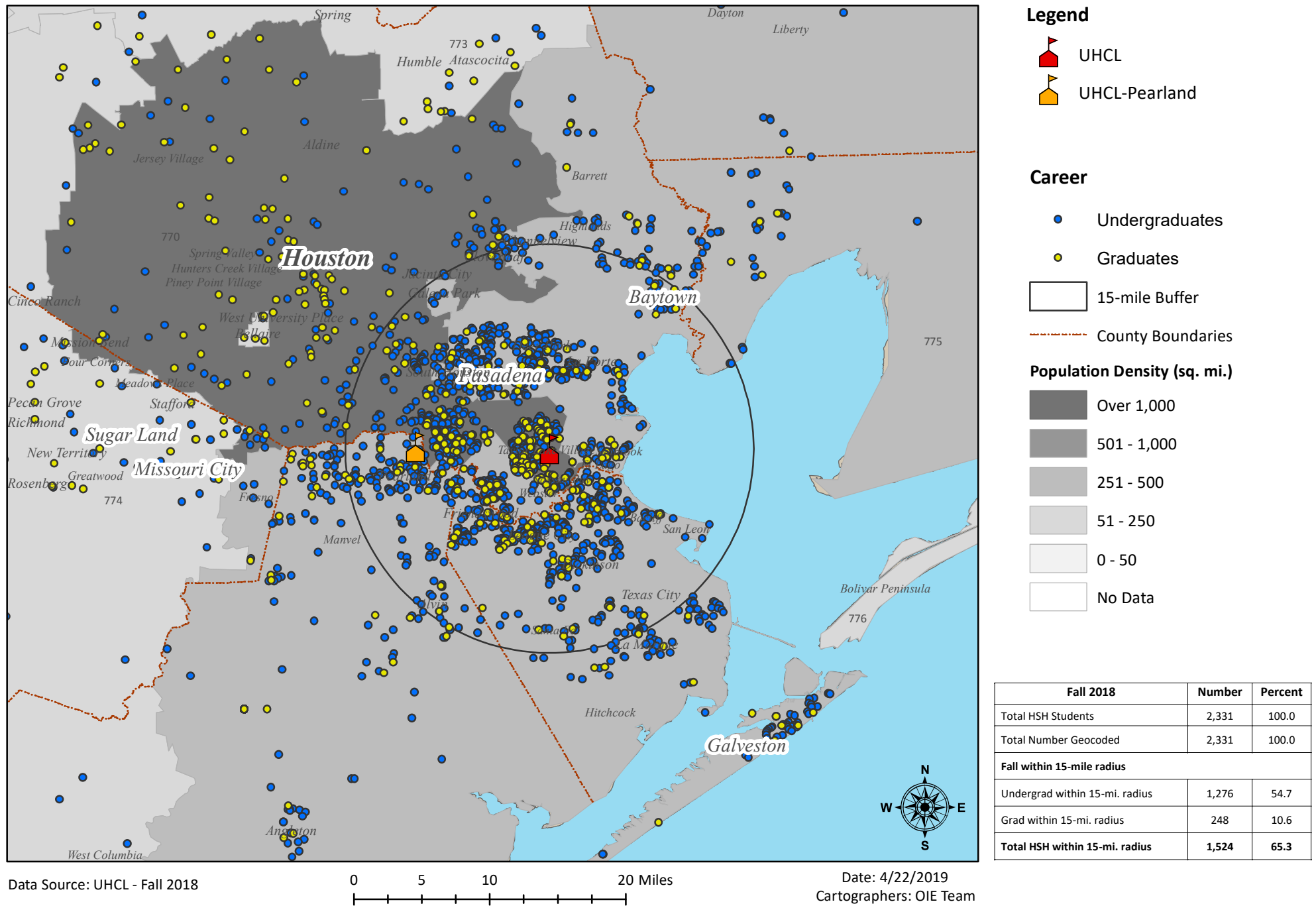
Data Source: UHCL - Fall 2018

0 5 10 20 Miles

Date: 4/22/2019
Cartographers: OIE Team

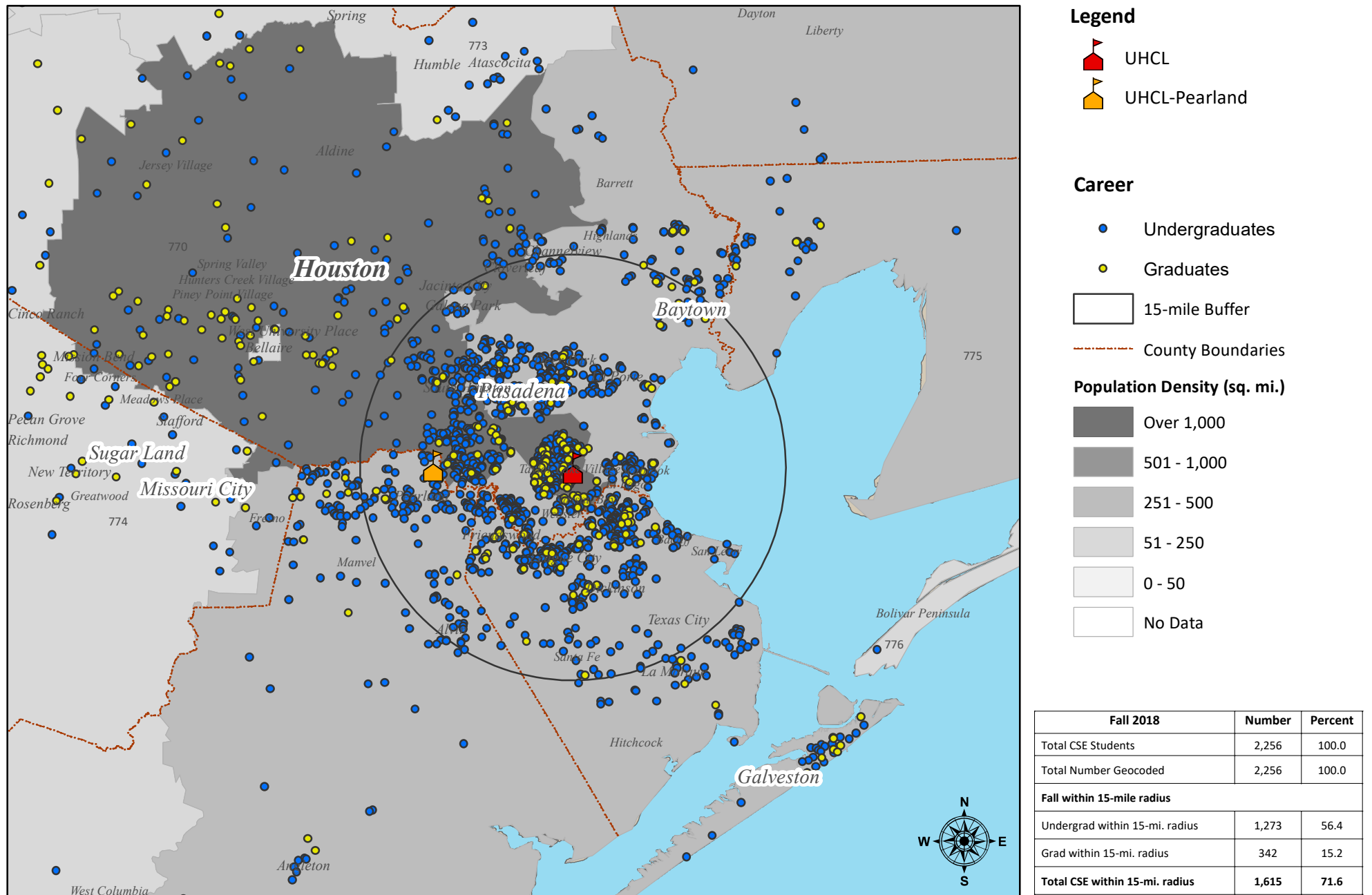
College of Human Sciences and Humanities - Student Level Distribution by Residence

Within 15-mile Radius of UHCL, Fall 2018



College of Science and Engineering - Student Level Distribution by Residence

Within 15-mile Radius of UHCL, Fall 2018



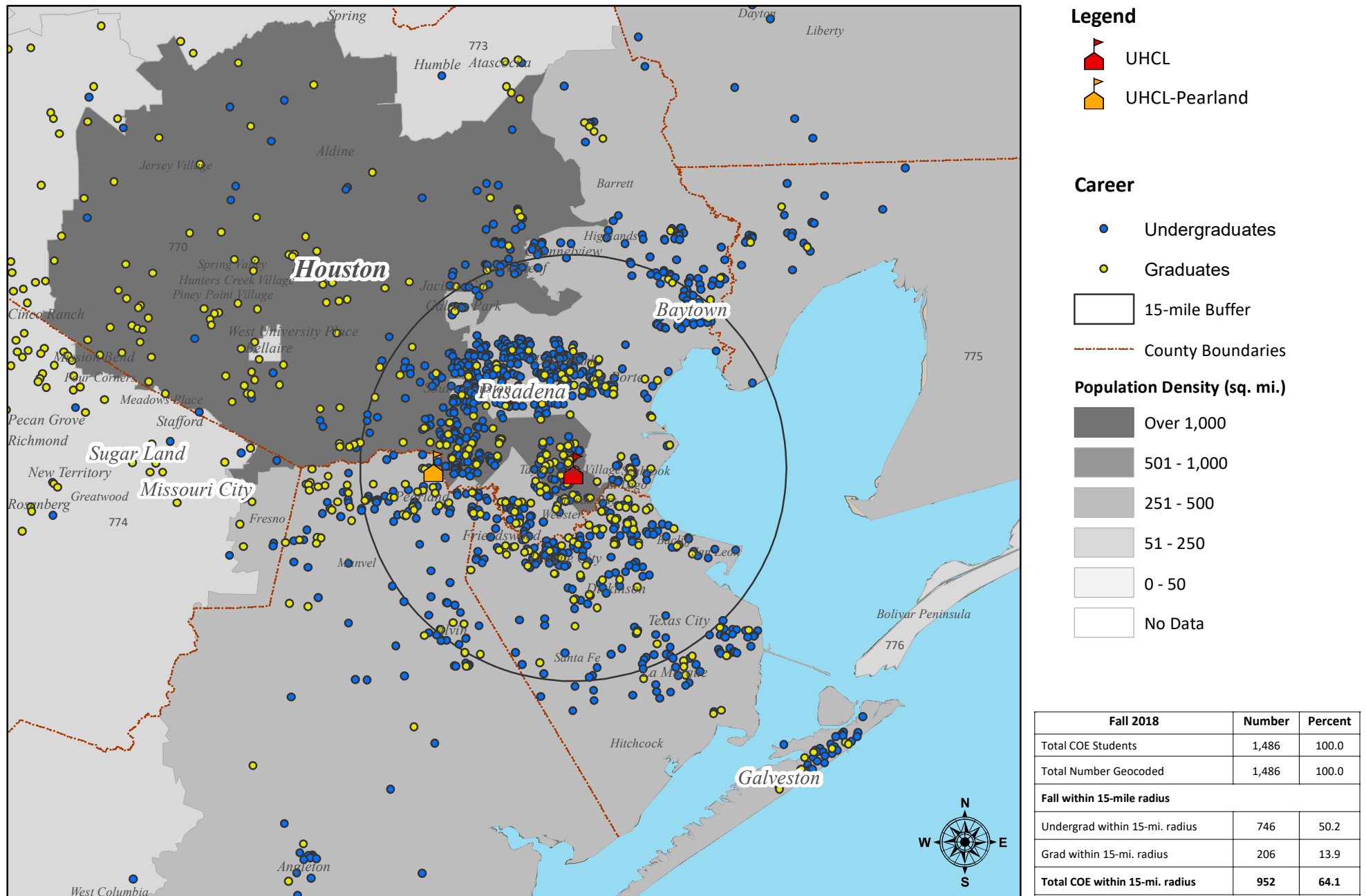
Data Source: UHCL - Fall 2018

0 5 10 20 Miles

Date: 4/22/2019
Cartographers: OIE Team

College of Education - Student Level Distribution by Residence

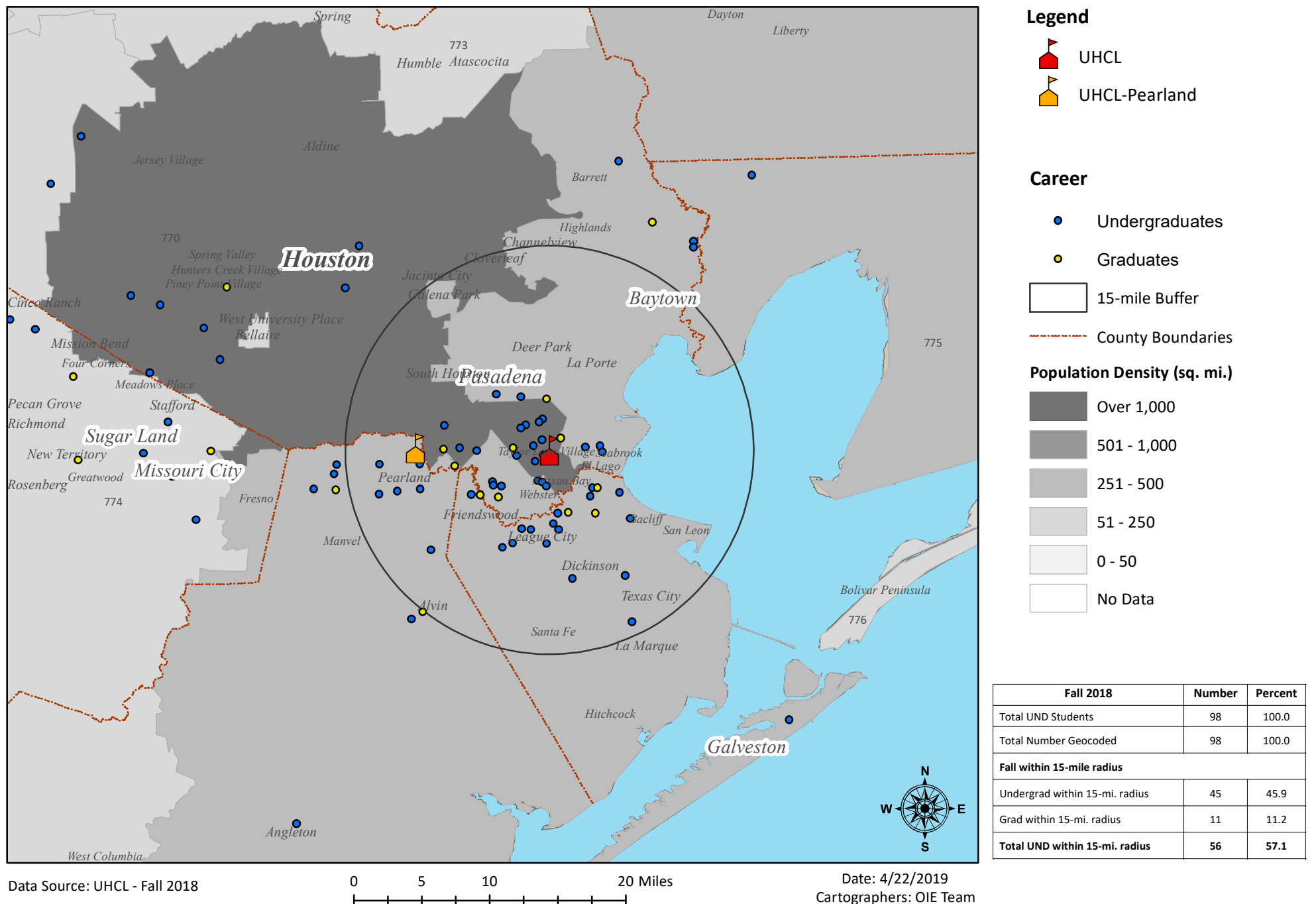
Within 15-mile Radius of UHCL, Fall 2018



Data Source: UHCL - Fall 2018

Undeclared Majors - Student Level Distribution by Residence

Within 15-mile Radius of UHCL, Fall 2018



Office of Institutional Effectiveness

Section 4: Faculty & Staff

Section 4 - Faculty and Staff

Total UHCL - Fall 2014 - Fall 2018 - 5-Year Trend Faculty Demographics

These figures are derived from the CBM008 certified reports for fall terms and represent unduplicated faculty by session.

Mean and Median Age	Fall 2014		Fall 2015		Fall 2016		Fall 2017		Fall 2018	
	Mean	Median	Mean	Median	Mean	Median	Mean	Median	Mean	Median
Age	43	43	42	40	43	41	44	43	44	42

Faculty by Rank	Fall 2014		Fall 2015		Fall 2016		Fall 2017		Fall 2018		Fall 2014 vs. Fall 2018 Change		Fall 2017 vs. Fall 2018 Change	
Rank	Count	Col %	Count	Col %	Count	Col %	Count	Col %	Count	Col %	Difference	% Change	Difference	% Change
Professor	63	7.7	63	7.1	63	7.1	68	8.5	65	8.3	2	3.2	-3	-4.4
Associate Professor	102	12.4	105	11.8	108	12.1	105	13.2	100	12.8	-2	-2.0	-5	-4.8
Assistant Professor	79	9.6	91	10.2	94	10.5	94	11.8	88	11.3	9	11.4	-6	-6.4
Instructor	0	0.0	0	0.0	0	0.0	0	0.0	0	0.0	0	n/a	0	n/a
Other Faculty	305	37.1	312	35.1	305	34.2	289	36.3	264	33.8	-41	-13.4	-25	-8.7
Teaching Assistant	273	33.2	318	35.8	321	36.1	240	30.2	265	33.9	-8	-2.9	25	10.4
UHCL Total	822	100.0	889	100.0	891	100.0	796	100.0	782	100.0	-40	-4.9	-14	-1.8

Faculty by Tenure Status	Fall 2014		Fall 2015		Fall 2016		Fall 2017		Fall 2018		Fall 2014 vs. Fall 2018 Change		Fall 2017 vs. Fall 2018 Change	
Tenure	Count	Col %	Count	Col %	Count	Col %	Count	Col %	Count	Col %	Difference	% Change	Difference	% Change
Non-tenured faculty	578	70.3	630	70.9	626	70.3	529	66.4	529	67.6	-49	-8.5	0	0.0
Tenured faculty	165	20.1	167	18.8	164	18.4	166	20.9	161	20.6	-4	-2.4	-5	-3.0
On tenure track faculty	79	9.6	92	10.3	101	11.3	101	12.7	92	11.8	13	16.5	-9	-8.9
UHCL Total	822	100.0	889	100.0	891	100.0	796	100.0	782	100.0	-40	-4.9	-14	-1.8

Faculty by FT/PT Status	Fall 2014		Fall 2015		Fall 2016		Fall 2017		Fall 2018		Fall 2014 vs. Fall 2018 Change		Fall 2017 vs. Fall 2018 Change	
FT/PT Status	Count	Col %	Count	Col %	Count	Col %	Count	Col %	Count	Col %	Difference	% Change	Difference	% Change
Full-time	244	29.7	259	29.1	265	29.7	267	33.5	253	32.4	9	3.7	-14	-5.2
Part-time	578	70.3	630	70.9	626	70.3	529	66.5	529	67.6	-49	-8.5	0	0.0
UHCL Total	822	100.0	889	100.0	891	100.0	796	100.0	782	100.0	-40	-4.9	-14	-1.8

For more information on Faculty Demographics, click the link below

<https://public.uhcl.edu/about/administrative-offices/institutional-effectiveness/documents/documents-institutional-effectiveness/faculty-pdfs/faculty-profile-f2014-2018.pdf>

Section 4 - Faculty and Staff

Total UHCL - Fall 2014 - Fall 2018 - 5-Year Trend Faculty Demographics (continued)

Faculty by Ethnicity	Fall 2014		Fall 2015		Fall 2016		Fall 2017		Fall 2018		Fall 2014 vs. Fall 2018 Change		Fall 2017 vs. Fall 2018 Change	
Ethnic Origin	Count	Col %	Count	Col %	Count	Col %	Count	Col %	Count	Col %	Difference	% Change	Difference	% Change
White	428	52.1	433	48.7	432	48.5	431	54.3	420	53.7	-8	-1.9	-11	-2.6
Black	40	4.9	48	5.4	42	4.7	44	5.5	39	5.0	-1	-2.5	-5	-11.4
Hispanic	53	6.4	70	7.9	74	8.3	76	9.5	101	12.9	48	90.6	25	32.9
Asian	69	8.4	76	8.5	76	8.5	76	9.5	80	10.2	11	15.9	4	5.3
American Indian or Alaskan Native	2	0.2	2	0.2	1	0.1	1	0.1	0	0.0	-2	-100.0	-1	-100.0
International	218	26.5	245	27.6	246	27.6	148	18.6	117	15.0	-101	-46.3	-31	-20.9
Unknown	2	0.2	3	0.3	6	0.7	9	1.1	9	1.2	7	350.0	0	0.0
Hawaiian / Pacific Islander	1	0.1	1	0.1	1	0.1	1	0.1	2	0.3	1	100.0	1	100.0
Multi-Racial	9	1.2	11	1.2	13	1.5	10	1.3	14	1.8	5	55.6	4	40.0
UHCL Total	822	100.0	889	100.0	891	100.0	796	100.0	782	100.0	-40	-4.9	-14	-1.8

Faculty by Gender	Fall 2014		Fall 2015		Fall 2016		Fall 2017		Fall 2018		Fall 2014 vs. Fall 2018 Change		Fall 2017 vs. Fall 2018 Change	
Gender	Count	Col %	Count	Col %	Count	Col %	Count	Col %	Count	Col %	Difference	% Change	Difference	% Change
Female	431	52.4	453	51.0	464	52.1	434	54.5	446	57.0	15	3.5	12	2.8
Male	391	47.6	436	49.0	427	47.9	362	45.5	336	43.0	-55	-14.1	-26	-7.2
UHCL Total	822	100.0	889	100.0	891	100.0	796	100.0	782	100.0	-40	-4.9	-14	-1.8

Full-Time Equivalent Faculty

These figures are derived from the CBM008 certified reports for fall terms and represent unduplicated faculty by session.

		FY 2014 - Based on Fall 2013	FY 2015 - Based on Fall 2014	FY 2016 - Based on Fall 2015	FY 2017 - Based on Fall 2016	FY 2018 - Based on Fall 2017
		FTE	FTE	FTE	FTE	FTE
UHCL Total						
Tenured	Professor	58	62	61	63	64
Tenured/On tenure track	Associate Professor	101	103	107	103	100
On tenure track	Assistant Professor	79	90	92	94	88
On tenure track	Instructor	0	0	0	0	0
Non-tenured	Other	109	121	114	111	100
Non-tenured	Teaching Assistant	86	102	107	68	72
Total		431.64	478.43	481.25	439.0	423.4
College of Business						
Tenured	Professor	19	17	19	18	18
Tenured/On tenure track	Associate Professor	29	30	26	21	22
On tenure track	Assistant Professor	12	17	18	15	13
On tenure track	Instructor	0	0	0	0	0
Non-tenured	Other	16	17	14	13	15
Non-tenured	Teaching Assistant	11	14	13	4	8
Total		87.2	94.23	90.0	71.0	75.1
College of Education						
Tenured	Professor	7	9	10	11.0	12
Tenured/On tenure track	Associate Professor	21	18	19	20.0	18
On tenure track	Assistant Professor	13	12	13	15.0	14
On tenure track	Instructor	0	0	0	0.0	0
Non-tenured	Other	29	27	24	23.0	25
Non-tenured	Teaching Assistant	1	1	1	0.0	0
Total		70.14	67.39	66.65	69.0	68.6

(Source: Certified CBM008)

Count - Includes all faculty records with teaching time and salary greater than 0. Non-tenure-track faculty reported in the first four ranks are counted as "Other."

Note: Excludes Overload and Flex-Entry For all Fiscal Years (FY).

Section 4 - Faculty and Staff

Full-Time Equivalent Faculty (continued)

		FY 2014 - Based on Fall 2013	FY 2015 - Based on Fall 2014	FY 2016 - Based on Fall 2015	FY 2017 - Based on Fall 2016	FY 2018 - Based on Fall 2017
		FTE	FTE	FTE	FTE	FTE
College of Human Sciences & Humanities						
Tenured	Professor	16	17	15	14	13
Tenured/On tenure track	Associate Professor	23	27	32	33	34
On tenure track	Assistant Professor	37	41	35	41	38
On tenure track	Instructor	0	0	0	0	0
Non-tenured	Other	40	46	46	44	39
Non-tenured	Teaching Assistant	7	8	8	10	13
Total		123.3	138.4	136.1	142.0	136.2
College of Science and Engineering						
Tenured	Professor	16	19	17	21	21
Tenured/On tenure track	Associate Professor	28	28	30	29	26
On tenure track	Assistant Professor	17	20	26	23	23
On tenure track	Instructor	0	0	0	0	0
Non-tenured	Other	24	31	31	30	21
Non-tenured	Teaching Assistant	66	80	85	55	52
Total		150.75	177.41	188.38	158.0	143.5

Average Full-Time Faculty Teaching Salary by College and Rank

These figures are derived from the CBM008 certified reports for fall terms and represent unduplicated faculty by session.

		FY 2014		FY 2015		FY 2016		FY 2017		FY 2018	
		Count	Mean	Count	Mean	Count	Mean	Count	Mean	Count	Mean
UHCL Total											
	Professor	55	101,541	63	103,183	62	111,297	64	108,700	64	104,301
	Associate Professor	99	79,456	104	82,549	107	84,001	103	82,178	100	82,343
	Assistant Professor	79	66,238	91	70,373	93	79,767	94	72,154	88	72,457
	Instructor	n/a	n/a	n/a	n/a	n/a	n/a	n/a	n/a	n/a	n/a
	UHCL Total	233	80,188	258	83,293	262	88,958	261	85,071	252	84,467
College of Business											
	Professor	19	118,241	17	125,238	19	131,824	18	125,063	18	125,069
	Associate Professor	29	103,161	30	106,792	26	109,023	21	109,941	22	109,637
	Assistant Professor	12	102,291	17	107,435	18	109,142	15	109,498	13	113,475
	Instructor	n/a	n/a	n/a	n/a	n/a	n/a	n/a	n/a	n/a	n/a
	BUS Total	60	107,762	64	111,863	63	115,934	54	114,858	53	115,819
College of Education											
	Professor	4	92,464	10	90,665	11	98,439	11	94,979	12	93,642
	Associate Professor	19	64,546	18	69,517	19	73,111	20	72,343	18	72,277
	Assistant Professor	13	51,524	12	56,895	13	61,301	15	61,779	14	61,921
	Instructor	n/a	n/a	n/a	n/a	n/a	n/a	n/a	n/a	n/a	n/a
	COE Total	36	62,946	40	71,017	43	76,020	46	74,311	44	74,809

Definitions

Count - Faculty headcount of faculty teaching for 100% or more for current fall term

Mean - Average Fiscal Year salary by school and rank

Individual's Fiscal Year Salary - (Fall Salary times 2 as instructed by THECB), were calculated and then aggregated for the averages.

Sources - Certified CBM008 Fall 2014-2018

Note: Excludes Overload and Flex-Entry Salaries For all Fiscal Years (FY)

Average Full-Time Faculty Teaching Salary by College and Rank (continued)

		FY 2014		FY 2015		FY 2016		FY 2017		FY 2018	
		Count	Mean	Count	Mean	Count	Mean	Count	Mean	Count	Mean
College of Human Sciences & Humanities											
	Professor	16	86,043	17	91,049	15	103,049	14	102,124	13	88,994
	Associate Professor	23	64,994	28	66,335	32	70,179	33	69,679	34	69,004
	Assistant Professor	37	58,735	42	58,120	36	73,991	41	60,132	38	60,626
	Instructor	n/a	n/a	n/a	n/a	n/a	n/a	n/a	n/a	n/a	n/a
	HSH Total	76	66,378	87	67,198	83	77,773	88	70,393	85	68,316
College of Science and Engineering											
	Professor	16	99,480	19	100,896	17	103,953	21	106,246	21	102,065
	Associate Professor	28	76,901	28	81,165	30	83,954	29	83,080	26	83,658
	Assistant Professor	17	68,373	20	72,691	26	76,662	23	75,997	23	75,234
	Instructor	n/a	n/a	n/a	n/a	n/a	n/a	n/a	n/a	n/a	n/a
	CSE Total	61	80,446	67	84,231	73	86,014	73	87,513	70	86,412

Salary Computations are based on the specifications outlined in the CBM008 section of the THECB REPORTING and PROCEDURES MANUAL for Texas Public Universities - Fall 2007

Salary Computations are as follows as printed in the THECB reporting Manual:

1. Sum the percent of time assigned for all appointments (Items #13A-13E). Do not include the percent of time of any flex-entry appointment.
2. Sum the salary amounts for all funds (Items #14A-X), excluding the overload (Item #14Z) and flex-entry (Item #16) salary items.
3. Divide the total percent of time assigned for all appointments (step 1) into the sum of all salary amounts (step 2), giving a full-time equivalent (FTE) salary for all appointments. Double this amount to yield a nine-month FTE salary amount.
4. Summarize the FTE salaries (results of step 3) of ONLY the faculty who have percents of time assigned to appointments 01 and/or 02.
5. Tally all faculty with appointment codes 01 and/or 02 where FTE salaries are greater than zero.
6. Divide the total faculty with appointment codes 01 and/or 02 (results of step 5) into the total FTE salaries of faculty with 01 and/or 02 appointments (results of step 4) to yield the average nine-month FTE salaries.

Number of Staff by Employment Status and Occupational Category as of November 1, 2018

Occupational category	Fall 2018		
	Full-Time Staff	Part-Time Staff	FTE Staff
Instructional Staff	287	174	345
Research Staff	2	0	2
Public Service Staff	0	0	0
Archivists, Curators, and Museum Technicians	0	0	0
Librarians	9	0	9
Library Technicians	0	0	0
Student and Academic Affairs and Other Education Services	13	0	13
Management Occupations	87	2	88
Business and Financial Operations Occupations	95	2	96
Computer, Engineering, and Science Occupations	62	1	62
Community, Social Service, Legal, Arts, Design, Entertainment, Sports and Media Occupations	32	2	33
Healthcare Practitioners and Technical Occupations	3	2	4
Service Occupations	63	0	63
Sales and Related Occupations	0	0	0
Office and Administrative Support Occupations	120	4	121
Natural Resources, Construction, and Maintenance	23	0	23
Production, Transportation, and Material Moving Occupations	6	0	6
Total Staff	802	187	864

Note: Full-time-equivalent (FTE) staff is calculated by summing the total number of full-time staff and adding one third of the total number of part-time staff. Graduate assistants are not included in the above figures.. Data were obtained from the UHCL Human Resources IPEDS Survey. Note that figures may differ from PeopleSoft and Texas Higher Education Coordinating Board data due to IPEDS specific methodology.

Faculty Teaching Award

2018	Dr. Anton Dubrovskiy	Assistant Professor of Chemistry
2017	Dr. Daniel Silvermintz	Associate Professor of Humanities
2016	Dr. Gokhan Gercek	Associate Professor MIS
2015	Dr. Beth Hentges	Associate Professor of Psychology
2014	Dr. Stephen Cherry	Assistant Professor of Sociology
2013	Dr. Naveed Saleem	Professor Management Information Systems
2012	Dr. Kim Case	Associate Professor of Women's Studies and Psychology
2011	Dr. Mike McMullen	Associate Professor of Sociology
2010	Dr. Lillian Benavente-McEnery	Associate Professor of Reading and Language Arts
2009	Dr. Gretchen Mieszkowski	Professor of Literature
2008	Dr. Edward Waller	Professor of Finance
2007	Dr. Vance Etnyre	Associate Professor of Mangement Information Systems
2006	Dr. Rebecca Huss-Keeler	Associate Professor of Early Childhood Education
2005	Dr. Ken Black	Professor of Decision Sciences
2004	Dr. Laurie R. Weaver	Associate Professor of Bilingual and Multicultural Educ.
2003	Dr. Maureen White	Associate Professor of Learning Resources
2002	Dr. Margaret Hill	Associate Professor of Reading and Language Arts
2001	Dr. Kyna S. Shelley	Associate Professor of Psychology
2000	Nick J. de Vries	Professor of Fine Arts
1999	Dr. Thomas L. Harman	Professor of Computer Engineering
1998	Dr. Cynthia L. Howard	Associate Professor of Biology & Environmental Sciences
1997	Dr. Mattie C. Porter	Professor of Accounting
1996	Dr. Patricia J. Wilson	Associate Professor of Learning Resources

Distinguished Research Award

2018	Dr. Jingjing Ma	Professor of Mathematics
2017	Dr. Zerong Wang	Professor of Chemistry
2016	Dr. Lei Wu	Associate Professor of Computer Software Engineering
2015	Dr. Lie June Shiau	Professor of Mathematics
2014	Dr. Kevin Wooten	Professor of Management
2013	Dr. Carl Zhang	Professor Environmental Science Environmental Chemistry
2011	Dr. Dorothea Lerman	Professor of Psychology
2010	Dr. Lawrence Kajs	Professor and Chair of Educational Leadership
2009	Dr. Paul Wagner	Professor of Philosophy and Educational Foundations
2008	Dr. Terry Feagin	Professor of Computer Science
2007	Dr. Gretchen Mieszkowski	Professor of Literature
2006	Dr. Altan Erdem	Professor of Marketing
2005	Dr. Keith Parsons	Professor of Philosophy
2004	Dr. Dale O. Cloninger	Professor of Finance and Economics
2003	Dr. Jack Y. Lu	Assistant Professor of Chemistry
2002	Dr. Thomas L. Harman	Professor of Computer Engineering
2001	Not Awarded	
2000	Dr. Ramiro Sanchez	Associate Professor of Chemistry
1999	Dr. Jonathan W. Zophy	Professor of History
1998	Dr. Jib Fowles	Professor of Media Studies
1997	Dr. Cynthia D. Heagy	Associate Professor of Accounting
1996	Dr. Mary G. Hodge	Associate Professor of Anthropology

Section 4 - Faculty and Staff

Distinguished Service Award

2018	Dr. Lillian McEnery	Professor of Reading
2017	Dr. Everette Penn	Professor of Criminology
2016	Dr. Jana Willis	Professor of Instructional Design and Technology
2015	Dr. Naveed Saleem	Professor of Management Information Systems
2014	Dr. Sharon K. Hall	Professor of Psychology
2013	Dr. Laurie Weaver	Professor of Bilingual and Multicultural Education
2012	Dr. Lawrence T. Kajs	Professor of Educational Leadership
2011	Dr. Louis White	Professor of Management
2010	Dr. James C. Benson	Associate Professor of Legal Studies
2009	Dr. Angela Howard	Professor of History
2008	Dr. Grady Perdue	Professor of Finance
2007	Dr. Judith Marquez	Associate Professor of Bilingual and Multicultural Education
2006	Dr. Robert McGlashan	Professor of Management
2005	Dr. Sue Brown	Associate Professor of Mathematical Education
2004	Dr. Leslye Mize	Associate Professor of Family Therapy
2003	Dr. Barry R. Marks	Professor of Accounting
2002	Dr. Bruce Palmer	Professor of History
2001	Dr. Michael E. Hanna	Professor of Decision Sciences
2000	Dr. Cynthia L. Howard	Associate Professor of Biology & Environmental Sciences
1999	Dr. Joan D. Bruno	Professor of Accounting
1998	Not Awarded	
1997	Dr. Gretchen Mieszkowski	Professor of Literature
1996	Dr. Dennis Casserly	Associate Professor of Industrial Hygiene

Outstanding Lecturer Award

2018	Thomas Dillon	Lecturer in Computer Science and Engineering
2017	Mustafa Mokrech	Lecturer Geographical Information Sciences
2016	Nancy Wright	Senior Lecturer, Reading and Language Arts
2015	Kathleen Garland	Lecturer in Environmental Management - SCE
2014	Vernon Bryant	Senior Lecturer in the Computer Engineering - SCE
2013	Pat Cuchens	Senior Lecturer in Writing - HSH
2012	Deborah M. Griffin	Senior Lecturer in Writing - HSH
2011	Norma Minter	Senior Lecturer in Bilingual and Multicultural Education - SOE
2010	Judy Bergman	Lecturer in Mathematics - SCE
2009	Krishani Abeysekera	Lecturer/System Administrator of Computer Science and Computer Information - SCE

Outstanding Adjunct Award

2018	Terry Chvala	College of Education
2017	Kenneth Goodwin	College of Science and Computer Engineering
2016	Robert Worthy	School of Education
2015	Christine Callahan	School of Education
2014	Peter Wuenschel	School of Human Sciences and Humanities
2013	Paule Anne Lewis	School of Business
2012	Ed Altemus	School of Business
2011	Billy Smith	School of Business
2010	Dr. George Pulliam	School of Human Sciences and Humanities
2009	Kumar Peeris	School of Science and Computer Engineering

Section 4 - Faculty and Staff

University Faculty Fellowships

2018-19	Dr. Jennifer Fritz	Associate Professor of Behavior Analysis
2018-19	Dr. David Garrison	Professor of Physics
2017-18	Dr. Emily Fessler	Assistant Professor of Family Therapy
2017-18	Dr. Daniel Silvermintz	Associate Professor of Humanities
2016-17	Dr. Samina Masood	Associate Professor of Physics
2016-17	Dr. Randy Seevers	Associate Professor of Special Education
2016-17	Dr. Chris Ward	Associate Professor of Psychology
2015-16	Dr. Bettye Grigsby	Associate Professor of Educational Leadership
2015-16	Dr. Mary Short	Associate Professor of Clinical Psychology
2015-16	Dr. Troy Voelker	Associate Professor of Management
2015-16	Dr. Laurie Weaver	Professor of Bilingual and Multicultural Education
2014-15	Dr. Sadegh Davari	Professor of Computer Science and Computer Information Systems
2014-15	Dr. Lillian Benavente-McEnergy	Associate Professor of Reading and Language Arts
2014-15	Dr. Lie June Shiau	Professor of Mathematics
2013-14	Dr. Cynthia Heagy	Professor of Accounting
2013-14	Dr. Christine Kovic	Associate Professor of Anthropology
2013-14	Dr. T. Andrew Yang	Associate Professor of Computer Science and Computer Information Systems
2012-13	Dr. Kim Case	Associate Professor of Women's Studies and Psychology
2012-13	Dr. Everette Penn	Associate Professor of Criminology
2012-13	Dr. Cheryl Sawyer	Associate Professor of Counseling
2011-12	Dr. Terry Dupler	Associate Professor of Fitness and Human Performance
2011-12	Dr. Barry Marks	Professor of Accounting
2011-12	Dr. Kevin Wooten	Professor of Management
2011-12	Dr. Carl Zhang	Professor of Environmental Science/Environmental Chemistry
2010-11	Dr. Stephen (Arch) Erich	Associate Professor of Social Work
2009-10	Dr. Sue E. Brown	Associate Professor of Curriculum and Instruction
2009-10	Dr. Dennis M. Casserly	Professor of Industrial Hygiene and Environmental Science
2009-10	Dr. Larry T. Kajs	Professor of Educational Leadership
2009-10	Dr. Keith M. Parsons	Professor of Philosophy
2009-10	Dr. D. Grady Perdue	Professor of Finance
2008-09	Dr. Mike Hanna	Professor of Decision Sciences
2008-09	Sandria Hu	Professor of Fine Arts
2008-09	Dr. Dorothea Lerman	Professor of Psychology
2008-09	Dr. Jack Lu	Professor of Chemistry
2003-2008	Not Awarded	
2002-03	Dr. Judith Marquez	Associate Professor of Bilingual & Multicultural Education
2002-03	Dr. Michael J. Mezzino	Professor of Mathematics
2002-03	Dr. W. Ronald Mills	Professor of Biology & Chemistry
2002-03	Dr. Kwok-Bon Yue	Associate Professor of Computer & Information Systems
2001-02	Nick J. de Vries	Professor of Fine Arts
2001-02	Dr. Cynthia L. Howard	Associate Professor of Biology & Environmental Science
2001-02	Dr. David H. Malin	Professor of Psychology & Neuroscience
2001-02	Dr. Ramiro Sanchez	Professor of Organic Chemistry

The Hugh P. Avery Prize – President’s Distinguished Staff Service Award

2018	Kristi Randolph Simon	Director, Student Information and Associate Dean of Students
2017	Susanne Clark	Senior Business Coordinator, College of Human Sciences and Humanities
2016	Chris Owens	Administrative Assistant, School of Education
2015	Leticia Sanchez	Senior Academic Advisor, Distance and Off Campus Education
2014	Jerry Jones	Director, Technical Services, Computing
2013	David Benz	Director of Student Relations, School of Education
2012	John F. Cordary	Associate Vice-President, Finance
2011	Ronald Klinger	Associate Director, Training & Organizational Dev., Office of Human Resources
2010	David Rachita	Assistant Dean of Students, Office of Student Life
2009	Ann Hinojosa	Coordinator of Academic Advising, School of Human Sciences and Humanities
2008	Cindy Cook	Associate Director, Counseling Services, Career & Counseling Services
2007	Vera Garcia	Administrative Assistant, Office of the President
2006	Ann Henry	Coordinator, Digital/Graphics Media Computing
2005	Ana Palomeque	Custodial Shift Supervisor, Facilities Management & Construction
2004	Theresa Presswood	Director of Communications, Communications
2003	Rose A. Sklar	InterimCo-Director of Enrollment Services/Registrar, Enrollment Services
2002	Stephen Sutton	Associate Dean of Students, Student Services
2001	Barbara Butler	Secretary, School of Human Sciences and Humanities
2000	Resa M. Ott	Community Relations Coordinator, Office of University Advancement
1999	Harriet Vincent	Manager, Accounts Payable
1998	Floyd Lemmon	Maintenance Coordinator, Facilities Management & Construction
1997	Jean H. Nettles	Teacher Certification Coordinator, School of Education

Merit Award

2018	Elizabeth Seidel	Senior Secretary, College of Education
2018	Bubba Jones	Supervisor, Building Maintenance, FMC
2018	Karen Wielhorski	Executive Director, Neumann Library
2018	Bernadina Streeter	Senior Academic Advisor, College of Education
2017	Debbie Brooner	Executive Secretary, College of Education
2017	Dolores Galvan	Supervisor, Printing Services, Business Services
2017	Sana Zeidan	Director, Academic Computing Labs, University Computing & Telecommunications
2017	Miriam Qumsieh	Associate Director, Data Management, Office of Institutional Effectiveness
2016	Sameer Pandee	Executive Director, International Admissions & Programs
2016	Kristi Randolph	Associate Director, Student Assistance Center
2016	Patti Koch	Senior Business Assistant, Environmental Institute of Houston
2016	Mary Garcia	Copy Center Technician, Copy Center
2015	Chuck Crocker	Director of Career Services, Career & Counseling Services
2015	Susan Steele	Coordinator of Library Instructional Services, Library
2015	Tiffany King	Scheduling Assistant, FMC - Scheduling & Space Planning
2014	Usha Mathew	Associate Vice President, Finance
2014	Leticia Sanchez	Senior Academic Advisor, Distance & Off-Campus Education
2014	Laura Velie	Administrative Secretary, Career & Counseling Services
2013	Terri Culbert	Senior Secretary, School of Human Sciences and Humanities
2013	Nichole Eslinger	Coordinator, Work/Life Services, Office of Human Resources
2013	Jerry Jones	Director, Technical Services, UCT
2012	Altagracia Aguilera	Lead Custodian, Facilities Management and Construction
2012	Candice Allison	Senior Secretary, Environmental Institute of Houston
2012	Kathy Kirchner	Supervisor, Support Center, UCT
2012	David Benz	Director, SOE Student Relations, School of Education
2011	Kim Edwards	Secretary, School of Science and Computer Engineering
2011	Carmen Conley	Academic Advising, School of Education
2011	Chris Ross	Director of Cash and Collections
2010	Sharon Klein	Secretary, School of Education
2010	Jennifer Clark	Assistant Director, Student Life, Office of Student Life
2010	Karen Barbier	Assistant Director, Media Relations, Office of Communications
2009	Roberta Hohmann	Administrative Secretary, Office of Sponsored Programs
2009	Katherine Justice	Executive Director, of Human Resources and Affirmative Action
2009	David Rachita	Assistant Dean of Student Life, Office of Student Life
2008	Jean Grant	Library Technician, Neumann Library
2008	Ann Hinojosa	Academic Advising Coordinator, School of Human Sciences and Humanities
2008	Lynda McKendree	Executive Director, Financial Aid
2007	Cathy Bye	Functional Analyst III, Budget
2007	Flossie DeSouza	Library Associate, Neumann Library
2007	Celio Chapa, Sr.	Grounds Specialist, Facilities Management and Construction
2006	Bonnie Garza	Assistant Director, Technical Services, UCT
2006	Mark Putnum	Supervisor, Systems Operations, Facilities Management and Construction
2006	Agatha Whitney	Secretary, School of Human Sciences and Humanities
2005	Richard Adams	Director of Operations Support, Administration and Finance
2005	Nina Perez	Executive Secretary, Student Services
2005	Janice Sauerwein	Assistant Registrar/Records, Office of Academic Records
2004	Gabriel Galvan	Maintenance Assistant, Facilities Management & Construction
2004	Wanda Honeycutt	Office Supervisor, Mid-Continent Technology Transfer Center
2004	Nancy Weise	Benefits Coordinator, Office of Human Resources
2003	Linda Bullock	Director, Multicultural and International Student Services
2003	Brenda Klimt	Grounds Supervisor & Horticulture Specialist-Facilities Mngmt & Constr.
2003	Irma Ornelas	Custodian-Facilities Management and Construction

Merit Award (continued)

2002	Armando Paulin	Groundskeeper, Facilities Management and Construction
2002	Carla Salter	Staff Assistant, Student Life
2002	Rose Sklar	Registrar/Senior Associate Director, Office of Enrollment Services
2002	Margaret Thomas	Senior Business Coordinator, Administration and Finance
2001	Michael Livingston	Director, University Computing and Telecommunications
2001	Linda K. Smith	Academic Advising Coordinator, School of Education
2001	Deborah McFadden	Administrative Secretary, School of Natural and Applied Sciences
2001	Andrew Daniels	Receiving Clerk, Purchasing
2000	Barbara Butler	Secretary, School of Human Sciences and Humanities
2000	Agnes E. Glynn	Director, Cashier and Collections
2000	Jorge L. Valdez	Carpenter, Facilities Management and Construction
1999	Jackie Rasberry	Director, Field Services & Teacher Center, School of Education
1999	Humberto Chapa	Groundskeeper, Facilities Management & Construction
1999	Janel Just	Business Assistant, School of Business & Public Administration
1998	Darella L. Banks	Executive Director, Enrollment Services
1998	Deborah Sellman	Accountant, Finance
1998	E. Collen Zlomke	Office Supervisor, Enrollment Services
1997	Jean M. Carr	Director of Budget, Business Services
1997	Zahira E. Garcia	Senior Secretary, Office of the Senior Vice President/Provost
1997	Johnny R. Young	Receiving Clerk, Purchasing & Operations

Office of Institutional Effectiveness

Section 5: Financial & Educational Resources

Section 5 - Financial and Educational Resources

Current Fund Revenues and Expenditures by Source

% = Percent of Total

Sources	FY 2014		FY 2015		FY 2016		FY 2017		FY 2018	
	Amount	%	Amount	%	Amount	%	Amount	%	Amount	%
Operating Revenues										
Tuition and Fees	57,842,281	54.6	67,145,436	59.4	72,247,315	57.8	70,901,381	54.8	69,610,323	55.1
Less tuition discounts	-4,632,945	-4.4	-7,890,620	-7.0	-8,960,918	-7.2	-10,633,465	-8.2	-12,236,273	-9.7
Auxiliary Services	1,358,530	1.3	1,235,390	1.1	1,432,924	1.1	1,524,884	1.2	1,679,187	1.3
Sales of Goods and Services	1,097,751	1.0	1,257,801	1.1	1,128,589	0.9	1,250,054	1.0	1,238,161	1.0
Federal Grant Revenues and Pass Through	2,685,467	2.5	2,818,184	2.5	2,550,338	2.0	2,300,178	1.8	2,441,774	1.9
State Grant Revenues and Pass Through	2,279,682	2.2	2,188,561	1.9	1,951,132	1.6	2,701,066	2.1	2,978,838	2.4
Other Grant Revenues and Pass Through	670,905	0.6	1,021,334	0.9	1,081,141	0.9	376,673	0.3	288,280	0.2
Total Operating Revenues	61,301,671	57.8	67,776,086	60.0	71,430,521	57.1	68,420,771	53.0	66,000,290	52.2
Non-Operating Revenues										
State Appropriations	36,105,325	34.1	36,002,826	31.9	41,705,194	33.4	42,890,279	33.1	41,973,917	33.2
Gifts	580,073	0.5	495,926	0.4	414,772	0.3	377,806	0.3	1,107,314	0.9
Investment Income	3,310,127	3.1	-723,702	-0.6	1,070,775	0.8	2,698,124	2.0	1,883,397	1.5
Interest Expenses and Fiscal Charges	-1,103,841	-1.0	-991,950	-0.9	-1,026,529	-0.8	-707,348	-0.5	-252,122	-0.2
Other Services	-2,787,517	-2.6	1,698,118	1.5	1,354,705	1.1	-1,107,201	-0.9	-1,923,584	-1.5
Endowment Additions	194,425	0.2	201,771	0.2	244,839	0.2	507,832	0.4	515,353	0.4
Net Transfers	-442,325	-0.4	-522,689	-0.5	97,515	0.1	6,204,356	4.8	4,475,942	3.5
Capital Assets		0.0								
Plant Operations		0.0								
Federal Revenues Non Operating	8,823,560	8.3	9,088,054	8.0	9,758,472	7.8	10,142,512	7.8	12,650,071	10.0
Total Non-Operating Revenues	44,679,827	42.2	45,248,354	40.0	53,619,743	42.9	61,006,361	47.0	60,430,288	47.8
Total Revenues	105,981,498	100.0	113,024,440	100.0	125,050,264	100.0	129,427,133	100.0	126,430,578	100.0

Source: UHCL Finance Office

Section 5 - Financial and Educational Resources

Current Fund Revenues and Expenditures by Source (continued)

Sources	FY 2014		FY 2015		FY 2016		FY 2017		FY 2018	
	Amount	%	Amount	%	Amount	%	Amount	%	Amount	%
Expenditures										
Instruction	39,897,060	38.1	45,640,176	41.8	49,650,867	41.7	49,997,664	41.0	48,722,698	40.9
Research	1,716,465	1.6	1,534,646	1.4	1,578,576	1.3	1,779,065	1.5	1,466,303	1.2
Public Service	422,522	0.4	798,536	0.7	809,907	0.7	151,959	0.1	36,905	0.0
Academic Support	13,903,900	13.3	14,517,905	13.3	16,483,137	13.9	17,160,231	14.1	16,765,022	14.1
Student Services	5,695,050	5.4	6,488,973	5.9	7,839,527	6.6	7,698,037	6.3	6,685,776	5.6
Institutional Support	14,514,552	13.9	14,125,138	13.0	16,119,226	13.5	16,881,655	13.9	16,741,035	14.1
Operation and Maintenance of Plant	6,049,029	5.8	6,264,917	5.7	6,700,548	5.6	7,433,424	6.1	6,674,012	5.6
Scholarships	10,927,183	10.4	8,773,053	8.0	8,794,948	7.4	8,614,712	7.1	9,711,043	8.2
Auxiliary Enterprises	5,903,740	5.6	5,180,157	4.7	5,171,825	4.3	5,840,794	4.8	5,585,558	4.7
Depreciation and Amortization	5,662,663	5.4	5,736,843	5.3	5,913,819	5.0	6,155,106	5.1	6,671,227	5.6
Total Expenditures	104,692,164	100.0	109,060,344	100.0	119,062,380	100.0	121,712,647	100.0	119,059,579	100.0
Tuition and Fees										
Tuition	15,082,095	28.3	17,033,276	28.7	19,779,570	27.4	17,642,698	24.9	15,444,299	22.2
Designated Tuition	25,708,275	48.3	28,892,411	48.8	37,974,218	52.5	37,133,904	52.4	37,934,498	54.5
Student Service Fees	3,535,035	6.6	3,853,003	6.5	4,304,457	6.0	4,279,570	6.0	4,483,106	6.4
Computer Use Fees	2,551,422	4.8	2,908,447	4.9	3,001,498	4.1	2,911,006	4.1	2,933,453	4.2
Library Use Fees	1,275,741	2.4	1,368,793	2.3	1,420,656	2.0	1,378,766	1.9	1,552,059	2.2
Other Student Fees	4,460,085	8.4	4,641,769	7.8	5,129,303	7.1	4,820,057	6.8	4,547,440	6.5
Student Center Fees	596,682	1.1	557,117	0.9	637,613	0.9	617,977	0.9	614,015	0.9
Rec & Well Facility Fee	0	0.0	0	0.0	0	0.0	2,117,402	3.0	2,101,453	3.0
Total Tuition and Fees	53,209,335	100.0	59,254,816	100.0	72,247,315	100.0	70,901,381	100.0	69,610,323	100.0

Source: UHCL Finance Office

Section 5 - Financial and Educational Resources

Annual Tuition and Fees

	2014-2015		2015-2016		2016-2017		2017-2018		2018-2019	
	Amt	% change ¹	Amt	% change	Amt	% change	Amt	% change	Amt	% change
Undergraduate										
Resident	7,132	4.9	7,473	4.8	7,931	0.1	8,189	3.3	8,557	4.5
Non-Resident	20,091	4.6	21,933	9.2	22,991	0.0	23,879	3.9	24,747	3.6
Graduate										
Resident	7,843	5.8	8,287	5.7	8,795	0.1	9,071	3.1	9,380	3.4
Non-Resident	15,259	5.5	16,621	8.9	17,417	0.0	18,053	3.7	18,650	3.3

Source: UHCL Budget Office

¹% change equals the amount of change from the previous year

Undergraduate @ 15 hours and Graduate @ 9 hours (All In-course fees and differential designated tuition included)

Section 5 - Financial and Educational Resources

Facilities

Buildings

Date Constructed	Building	Assignable Sq. Feet
	General Purpose	
1971	Arbor Building	28,589
1976	Bayou Building	368,915
1979	Delta Building	41,263
1996	FMC Training Center	767
2002	North Office Annex Building	4,924
2003	Welding Arts Building	960
2004	Student Services Classroom Building	97,822
2006	TMC @2151 Holcomb	9,693
2010	Pearland Building	17,791
2012	Arbor North Building	16,751
2012	Arbor South Building	7,338
2013	North Office Annex II	6,882
2018	STEM and Classroom Building	59,685
2018	Recreation and Wellness Center	42,867
2019	Health Science Classroom Pearland	25,450
2018	Police Department	5,379
	Subtotal	735,076
	Special Purpose	
1976	Central Services	22,940
1998	Greenhouse	2,880
2003	EIH Storage	253
2007	Risk Management Storage	235
	Subtotal	26,308
	Total	761,384

Rooms by Type and Size

	Number of Rooms	Assignable Sq. Ft.
Classrooms	73	63,534
Class Laboratories	53	58,226
Non-class Laboratories	114	88,658
Office and Service Rooms	1,390	226,225
Conference Rooms	46	12,374
Study Facilities	36	84,369
Special Use	48	32,809
General Use	115	80,493
Supporting Facilities	66	36,281
Health Care Facilities	12	1,193
Service Areas (Class, Lab)	114	24,331
Total	2,067	708,493

Section 5 - Financial and Educational Resources

The Alfred R. Neumann Library

Chloris Yue
Interim Executive Director
YueC@uhcl.edu
281-283-3916

The mission of Neumann Library is to provide the people, services, information resources, and environment needed to promote teaching, learning, and the pursuit of knowledge. As the intellectual heart of the university, the Neumann Library makes information readily available for the research and studies of the University of Houston-Clear Lake students and faculty, and enriches the surrounding community by sharing its resources with scholars and citizens.

Library Resources

	2014	2015	2016	2017	2018
Holdings					
Titles Held	361,458	361,002	361,157	363,025	359,650
Volumes Held	515,132	510,398	506,457	499,630	495,792
Microfilm Reels	45,237	10,278	10,278	10,278	10,278
Microfiche	1,814,933	1,773,163	1,773,163	1,773,163	1,773,163
Print Subscriptions	494	471	451	408	344
Documents					
U.S.	57,075	55,398	50,520	48,363	48,446
Texas	5,055	5,055	5,055	5,055	5,055
Electronic Resources					
Research Databases	212	214	239	233	212
e-Books	296,732	327,154	457,732	490,261	503,332
e-Journals	77,860	79,351	84,770	85,734	93,891
e-Videos	36,663	39,149	43,690	73,598	81,483

Source: UHCL Neumann Library

Library Services

	2014	2015	2016	2017	2018	
Circulation	49,589	45,293	40,279	45,049	47,956	incl. Pearland
Use of Electronic Resources	425,640	426,671	427,500	491,264	493,020	
Interlibrary Loans						
Loans	5,008	4,898	5,267	4,725	3,748	
Borrowed	5,632	5,586	6,475	5,575	5,241	
Total	10,640	10,484	11,742	10,300	8,989	
Library Instruction						incl. Pearland
Face-To-Face	89	118	156	142	112	
Online	54	45	33	32	41	
Total Attendance	2,863	2,966	3,803	3,257	2,933	
Reference	8,072	7,521	6,791	5,059	5,668	incl. Pearland
Visits to Library Website	163,864	163,267	178,933	111,639	195,938	
Visits to Library Research Guide	212,337	229,922	120,689	115,671	184,416	

Source: UHCL Neumann Library

Section 5 - Financial and Educational Resources

Career Services

Chuck Crocker, M.Ed.
Director
Crocker@uhcl.edu
281-283-2596

The mission of Career Services is to guide and to support the members of the university community in the achievement of their educational, vocational, and psychological goals.

Career Services assist students in establishing and/or advancing careers in their degree fields and in finding jobs while they are enrolled in school. The program goals related to these services are:

- Help students and alumni make appropriate educational and career choices;
- Develop and promote experiential education opportunities for students;
- Support students and alumni in their efforts to pursue employment and develop effective job search strategies; and
- Promote a systematic flow of information between the university and the employer community.

Career Services					
	2014	2015	2016	2017	2018
On-Campus Interviews					
Organizations Interviewing	19	16	10	6	14
Interviews Conducted	79	80	80	50	50
Resume Referrals					
Companies	2,573	2,290	2,756	3,225	N/A*
Resumes Transmitted	4,293	3,212	2,070	2,095	N/A*
Cooperative Education Registrations	39	58	37	26	27
Mock Interviews	67	53	87	94	95
Presentations and Workshop Attenda	1,571	1,580	1,227	3,875	5,630
Students Registered with Career Serv	664	549	204	735	1,798
Career Counseling Contact	1,090	1,091	1,113	1,857	1,747

*During 2018, Career Services started using another career management platform that does not report on the number of resumes sent out.

Section 5 - Financial and Educational Resources

Counseling Services

Cynthia A. Cook, Ph.D.

Director

cookc@uhcl.edu

281-283-2595

The mission of UHCL Counseling Services is to help students fulfill their goals by fostering connections with and among members of the university community, facilitating the discovery and realization of power in their strengths and developing the ability to address emotional and psychological challenges.

The program goals related to these services are the following:

- Help students identify and address emotional and psychological challenges.
- Promote the personal development and psychological wellbeing of students and members of the campus community.
- Provide appropriate consultation and outreach to faculty and staff.
- Offer training opportunities for psychology and counseling professionals to cultivate the skills necessary to work in higher education and other related settings.

Counseling Services					
	2014	2015	2016	2017	2018
Counseling Contacts					
Regular Session	1,517	1,874	1,821	2,409	2,390
Initial Consultation	219	299	321	425	453
Group Session	501	522	679	692	596
Couples Session	90	149	102	140	184
Psychiatry Session	238	235	225	230	252
Crisis Session	29	39	56	53	88
Total	2,594	3,118	3,204	3,949	3,963

Section 5 - Financial and Educational Resources

Pearland Enrollment and Semester Credit Hourss (SCH) by Term

In May 2009, UHCL partnered with the City of Pearland to create the UHCL Pearland Campus, a 30,956-square-foot facility designed to provide further access to high quality bachelor's and master's degree programs for residents of the Pearland area. Classes began at the satellite campus on Aug. 23, 2010.

Pearland Enrollment and Semester Credit Hourss (SCH) by Term										
Location Taken	Fall 2014		Fall 2015		Fall 2016		Fall 2017		Fall 2018	
	Headcount	SCH	Headcount	SCH	Headcount	SCH	Headcount	SCH	Headcount	SCH
Pearland Only	116	678	87	507	80	429	55	297	121	660
Pearland Plus Other	668	2,611	595	2,253	645	2,478	634	2,376	659	2,520
Total	784	3,289	682	2,760	725	2,907	689	2,673	780	3,180

Pearland Only - Student taking course at Pearland campus only

Pearland Plus Other - Student taking course at Pearland campus and other UHCL site

Section 5 - Financial and Educational Resources

Office of Sponsored Programs

Dr. Nancy L. Devino
Executive Director, Office of Sponsored Programs
devino@uhcl.edu
281-283-3016

Mission

The mission of the Office of Sponsored Programs is to support UHCL's institutional projects and faculty research by providing assistance with funding searches, proposal preparation, proposal submission, and award administration.

External Research Development Activity					
	2014	2015	2016	2017	2018
Number of Proposals					
Submitted	85	66	82	95	91
Funded	34	27	36	42	49
Amount of Proposals					
Submitted	\$34,758,100	\$14,434,748	\$23,836,214	\$23,990,514	\$20,169,009
Awarded	\$4,500,645	\$2,080,726	\$2,640,551	\$3,480,830	\$3,732,797

2018				
Component	Number of Proposals		Amount of Proposals	
	Submitted	Funded	Submitted	Awarded
ADM	8	9	\$445,738	\$358,624
BUS	0	0	\$0	\$0
HSH	24	14	\$3,022,467	\$909,155
CSE/EIH	42	22	\$12,107,312	\$2,373,388
COE	17	4	\$4,593,492	\$91,630
Total	91	49	\$20,169,009	\$3,732,797

Section 5 - Financial and Educational Resources

Student Financial Aid

Holly Nolan, M.A.
Executive Director
nolan@uhcl.edu
281-283-2492

Student Financial Aid Awards by Source										
	FY 2014		FY 2015		FY 2016		FY 2017		FY 2018	
	<i>n</i>	Amount	<i>n</i>	Amount	<i>n</i>	Amount	<i>n</i>	Amount	<i>n</i>	Amount
Grants										
Pell	2,219	7,790,603	2,441	8,609,250	2,510	8,917,260	2,645	9,574,537	2,845	11,249,595
Supplemental Educational Opportunity Grant (SEOG)	96	118,766	120	138,500	145	167,000	132	207,000	197	260,158
Texas Public Education Grant (TPEG)	735	964,455	762	1,121,107	765	1,179,511	696	1,044,265	677	1,046,384
Texas Grant	248	1,703,885	239	1,595,216	239	1,228,558	267	1,926,036	248	2,052,841
Teach Grant	88	228,374	74	174,995	72	188,333	73	155,762	88	240,013
Other Grants & Scholarships (Excluding Waivers)	4,303	6,100,354	4,803	6,995,864	4,734	7,534,569	3,920	6,216,588	4,021	6,441,469
Total	7,689	16,906,437	8,439	18,634,932	8,465	19,215,231	7,733	19,124,188	8,076	21,290,460
Loans										
Perkins	28	52,000	12	20,000	6	32,200	8	31,802	2	8,000
Direct Loan Sub	1,935	8,072,070	2,058	8,200,693	2,019	8,124,509	2,056	8,526,382	2,018	8,093,092
Direct Loan Unsub	2,789	23,394,961	2,753	22,496,649	2,569	19,341,320	2,592	19,895,540	2,726	21,637,642
PLUS	22	137,533	31	208,575	36	399,214	40	372,317	48	414,248
B-On-Time	14	71,191	19	110,381	9	58,200	0	0	0	0
Total	4,788	31,727,755	4,873	31,036,298	4,639	27,955,443	4,696	28,826,041	4,794	30,152,982
Work Study										
Federal Work Study	85	181,334	89	197,998	70	196,395	72	154,284	88	178,044
State Work Study	50	54,488	63	77,792	40	52,464	35	52,555	45	54,269
HB 3015 Work Study	18	31,730	38	50,279	0	0	15	13,105	7	2,252
Total	153	267,552	190	326,069	110	248,859	122	219,944	140	234,565
Loans										
External and Private Loans	81	662,901	77	698,639	123	995,360	134	1,173,501	95	765,983
Total	81	662,901	77	698,639	123	995,360	134	1,173,501	95	765,983
Unduplicated # of Aid Recipients	5,925		6,406		6,378		6,289		7,184	

Section 5 - Financial and Educational Resources

Student Financial Aid (continued)

Student Financial Aid Awards by Source and Ethnicity										
	FY 2014		FY 2015		FY 2016		FY 2017		FY 2018	
	<i>n</i>	Amount	<i>n</i>	Amount	<i>n</i>	Amount	<i>n</i>	Amount	<i>n</i>	Amount
Grants										
White, non-Hispanic	1,793	7,568,317	1,803	7,999,093	1,819	8,066,759	1,796	8,056,504	1,698	7,763,987
Black, non-Hispanic	492	1,914,597	555	2,574,192	548	2,608,879	499	2,334,806	493	2,260,209
Hispanic	1,362	6,239,230	1,478	7,303,115	1,568	7,677,761	1,685	8,118,766	1,739	8,705,394
Asian/Pacific Islander	275	1,162,030	309	1,456,837	310	1,486,745	326	1,578,501	449	1,876,921
American Indian/Alaskan	11	31,313	13	49,725	10	68,976	15	73,404	24	138,668
Other/Unknown	767	5,522,593	999	5,909,213	1,025	6,697,473	856	5,328,022	207	561,853
Total	4,700	22,438,080	5,157	25,292,175	5,280	26,606,593	5,177	25,490,003	4,610	21,307,032
Loans										
White, non-Hispanic	1,502	13,936,596	1,461	13,607,634	1,400	12,253,505	1,406	12,893,285	1,421	12,993,906
Black, non-Hispanic	619	6,615,399	621	6,196,827	546	5,388,564	492	4,794,680	538	525,707
Hispanic	1,021	8,627,969	1,045	8,245,712	1,013	7,833,911	1,085	8,862,223	1,143	9,654,758
Asian/Pacific Islander	170	1,657,859	171	1,564,139	171	1,535,340	176	1,661,912	225	2,277,554
American Indian/Alaskan	10	115,063	9	105,034	8	57,040	6	65,553	13	123,319
Other/Unknown	159	1,666,144	212	1,677,514	205	2,070,776	187	1,877,651	69	670,427
Total	3,481	32,619,030	3,519	31,396,860	3,343	29,139,136	3,352	30,155,304	3,409	26,245,671
Work Study										
White, non-Hispanic	31	79,684	28	96,900	29	76,215	35	83,490	37	81,886
Black, non-Hispanic	14	40,001	17	53,291	16	42,379	12	43,315	17	43,009
Hispanic	26	77,026	39	119,468	30	90,926	22	58,598	26	68,424
Asian/Pacific Islander	14	58,538	16	56,484	16	44,805	13	44,937	16	27,549
American Indian/Alaskan	0	0	0	0	0	0	0	0	2	3,698
Other/Unknown	4	14,118	2	7,415	5	7,811	5	10,295	0	0
Total	89	269,367	102	333,558	96	262,136	87	240,635	98	224,566

Student Financial Aid and Other Demographic Information

	FY 2014	FY 2015	FY 2016	FY 2017	FY 2018
	<i>n</i>	<i>n</i>	<i>n</i>	<i>n</i>	<i>n</i>
Academic Career					
Undergraduate	4,281	4,686	4,912	5,043	5,033
First Time In College (FTIC)		205	205	210	228
Graduate	2,424	2,303	2,360	2,278	1,799
Bachelor or Higher	145	130	132	154	124
Total	6,850	7,324	7,609	7,685	7,184
Residency					
Resident	5,962	6,417	6,481	6,584	6,646
Non- Resident	888	907	1,128	1,101	538
Total	6,850	7,324	7,609	7,685	7,184
Enrollment Status					
Full-time	4,105	3,923	4,343	4,381	4,080
3/4-time	1,473	1,788	1,170	1,257	1,256
1/2-time	787	945	1,299	1,242	1,266
Less than 1/2-time	485	668	797	805	582
Total	6,850	7,324	7,609	7,685	7,184

Section 5 - Financial and Educational Resources

VA Services

Natashia Pilling
Interim Coordinator, Veteran Services
pilling@uhcl.edu
281-283-3071

The Veteran Services office was established in 2013.

	FY 2014		FY 2015		FY 2016		FY 2017		FY 2018	
	n	Amount	n	Amount	n	Amount	n	Amount	n	Amount
Veterans										
White, non-Hispanic	250	1,105,727	272	\$1,288,138.90	333	\$1,709,412.20	354	\$1,983,651.41	422	\$2,469,359.58
Black, non-Hispanic	52	238,120	55	\$253,027.25	58	\$302,648.90	64	\$325,540.60	84	\$504,838.35
Hispanic	130	566,358	156	\$722,336.70	179	\$877,944.31	207	\$1,011,850.90	223	\$1,179,587.34
Asian/Pacific Islander	8	55,167	9	\$31,113.00	5	\$16,123.00	8	\$31,396.00	15	\$81,184.45
American Indian/Alaskan	2	8,142	4	\$18,040.40	5	\$24,751.00	4	\$12,147.60	7	\$45,919.25
Other/Unknown	37	149,105	36	\$142,852.40	36	\$168,591.25	40	\$191,403.41	43	\$233,862.06
Total	479	\$2,122,620	532	\$2,455,508.65	616	\$3,099,470.66	677	\$3,555,989.92	794	\$4,514,751.03

Section 5 - Financial and Educational Resources

Student Life Events and Participation

Patrick Lawrence Cardenas
Interim Director of Student Life
cardenas@uhcl.edu
281-283-2551

	FY 2014	FY 2015	FY 2016	FY 2017	FY 2018
University Events					
I HEART UHCL Day	573	430	448	468	636
Leadership Conference	209	250	220	200	n/a
Student Organizations					
Organizations Recognized	84	88	84	99	95
Number of Organized Events	450	n/a	n/a	962	n/a
Additional Services					
Marquee (messages)	n/a	n/a	n/a	n/a	n/a
Room Reservations	n/a	n/a	n/a	n/a	n/a
Film & Seaker Series	2,288	1,694	1,622	1,779	1,588
Chili Cook-Off	512	0	415	427	250

Office of Institutional Effectiveness

Section 6: External & Alumni Relations

Section 6 - External and Alumni Relations

Community College Advisory Council

When UHCL was established in 1971, the legislation provided for a statutorily created council of community and junior college presidents to advise the university president. This is the only such statutorily created advisory council in the state of Texas.

The statute provides for the Community College Advisory Council to consist of presidents/chancellors of each tax-supported community and junior college in Harris, Galveston, Fort Bend, Waller, Montgomery, Liberty, Chambers, and Brazoria counties. At the university's initiative, a bill was introduced and passed into law during the 1991 legislative session to add Wharton to the list of counties.

The legislation calls for the advisory council to "periodically study the overall needs of the region ... for the development of programs and resources in higher education, and as a result of its studies shall make recommendations to the board of regents of the University of Houston [System] regarding the development of the departments and degree programs of the [University of Houston-Clear Lake]. The board of regents shall give careful consideration to the recommendations of the advisory council."

The interaction of UHCL with its community and junior college partners is widely acknowledged as a state and national model of institutional cooperation and has been instrumental in the success of the university.

Alvin Community College

Christal M. Albrecht

Brazosport College

Millicent M. Valek

College of the Mainland

Warren Nichols

Galveston College

W. Myles Shelton

Houston Community College System

Cesar Maldonado

Lee College

Dennis Brown

Lone Star College System

Stephen C. Head

San Jacinto College District

Brenda Hellyer

Wharton County Junior College

Betty A. McCrohan

Section 6 - External and Alumni Relations and University Communications Under the President's Office

Office of UHCL University Advancement

Rhonda Thompson
Vice President
ThompsonR@uhcl.edu
281-283-2018

The University of Houston-Clear Lake Office of University Advancement (UA) provides professional support to the university in the areas of communications, development and alumni relations. Through effective communications, fundraising initiatives and alumni programs, UA partners across the university to enhance the image of the university, garner philanthropic resources for institutional priorities and connect alumni, donors and others to the university.

Office of Development and Alumni Relations

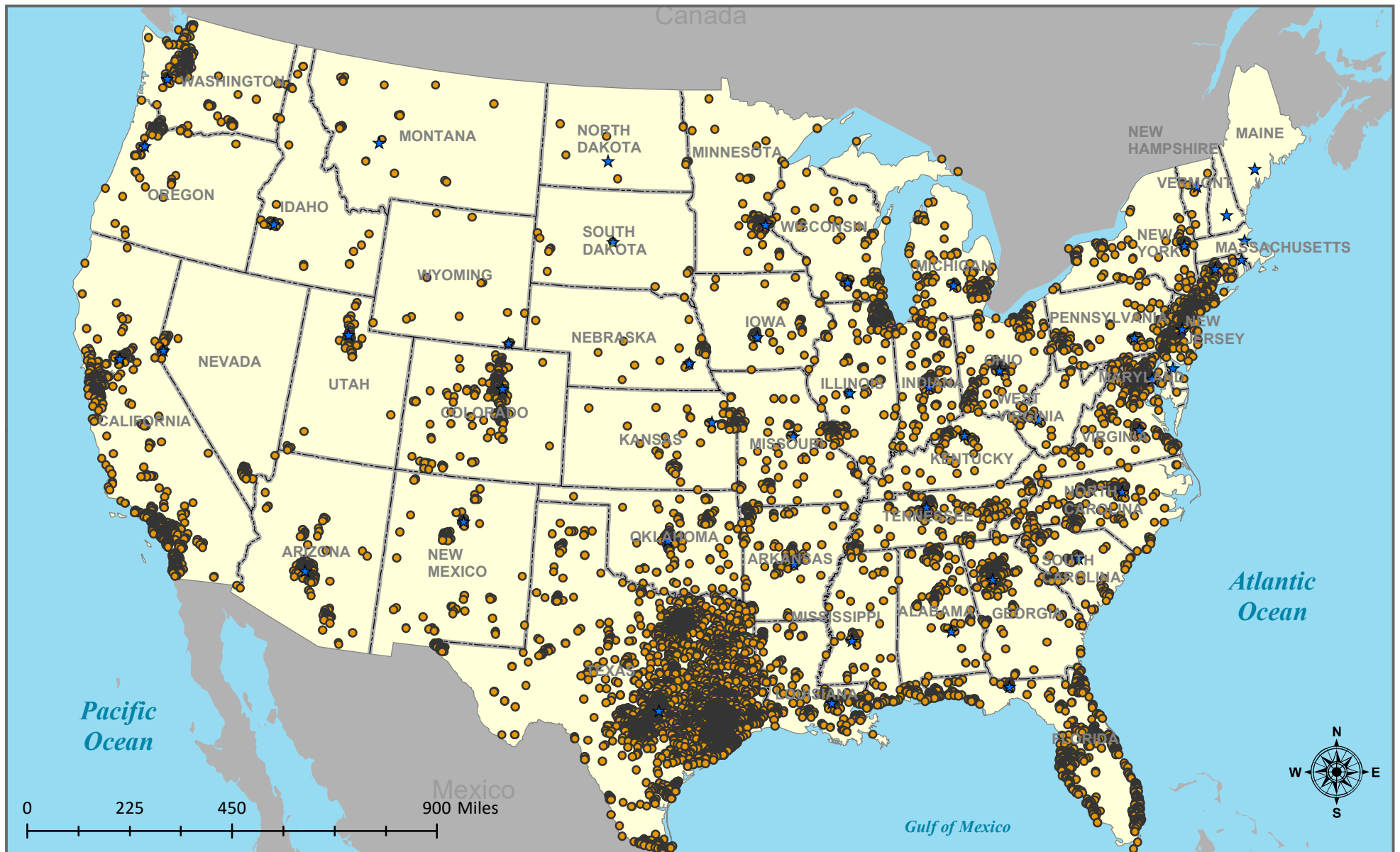
Dwayne Busby
Executive Director
Busby@uhcl.edu
281-283-2019

The UHCL Office of Development and Alumni Relations strives to strengthen the relationships between University of Houston-Clear Lake and its alumni, friends and donors to advance the interests and goals of the university. The office works with UHCL faculty, staff and students to identify events and projects that promote the university's academic mission. Staff members help identify and facilitate opportunities to connect alumni with one another, faculty, students and community partners. The bonds created enhance and increase participation and philanthropic support from our alumni, friends of UHCL, foundations and corporations for the institution's academic goals. The office ensures that all gifts are managed in accordance with donors' wishes and oversees a personalized donor and volunteer recognition program.

UHCL Alumni Association

Founded in 1981, the UHCL Alumni Association represents more than 64,000 alumni. It was created to enhance the pride, loyalty and engagement of its alumni by connecting them to UHCL alumni, student, parents and friends of the university through support services, activities and events. Working in connection with the Office of Development and Alumni Relations, the association promotes the educational programs and objectives of the university by providing alumni opportunities to remain involved with their alma mater. The UHCL Alumni Association supports three endowments – the UHCL Alumni Association Scholarship Endowment for current students, the UHCL Distinguished Alumni Scholarship Endowment for descendants of UHCL alumni and the UHCL Alumni Association Program Endowment to support student programming, faculty research and development. All UHCL graduates and recipients of teacher's certificates are automatically members of the UHCL Alumni Association; no dues are necessary. Lifetime Alumni Membership is available with a one-time contribution of at least \$500 which entitles members to exclusive benefits beyond the general alumni association membership.

UHCL Alumni Residents Within United States, Fall 2018



Legend

- ★ Capital Cities
- UHCL Alumni
- State Boundaries

Total Alumni = 61,856
 Total Geocoded = 61,014
 Percent Geocoded = 98.6%
 Alumni Reside in Texas = 86.3%

Data Source: University Advancement
 Cartographers: OIE Team
 Date: 04/22/2019

Section 6 - External and Alumni Relations

Distinguished Alumni Awards - 1984-2018

The UHCL Alumni Association developed the UHCL Distinguished Alumni Award to honor former students who have distinguished themselves in their professions and made significant contributions to society.

Year	Honoree	Degree(s)
2018	Joyce Delores Taylor	MA 2004, MA 2006, MA 2008
2018	Micheal Marquez	MS 1999
2018	Kenny Koncaba	BA 1990
2017	Estella Hernandez Gillet	BBA 1986, MA 1994
2017	Denise S. Navarro	BA 1986, MBA 1991
2017	Michael Squyres	BA 1993
2016	Christine (Christy) Harpe	BS 1992, MA 1994
2016	Evelyn Miralles	BA 1992, MBA 2012
2015	Anita Fogtman	BA 1980
2014	Carolyn Ann Lightfoot	MA 1990
2014	Kevin C. Wooten	BA 1976, MA 1978
2013	E. Michael Fincke	MS 2001
2013	Charles F. Hall, Jr.	MBA 1997
2013	Natalie V. Saiz	MA 1991
2013	Diane Davies Vest	BBA 1987
2012	Cris C. Daskevich	MHA/MBA 1997
2012	Douglas W. Hiser Jr.	BA 1996
2012	Juan Manuel Traslaviña	BS, 1987, MS 1993
2011	Craig A. Cordola	MHA/MBA 1998
2011	Bernard Harris Jr.	MBA 1999
2011	Stephen K. Jones Jr.	MHA/MBA 1996
2011	E. J. (Joe) King	BS 1977
2010	Cindy Howard	MS 1981
2010	Lee Morin	MS 2009
2010	Rebecca Reitz	BBA 1990
2010	Marilyn Sims	BS 1988
2010	Gregory Smith	MS 1984
2010	Maura Walsh	MA 1983
2009	Richard H. Anderson	BS 1977
2009	Christopher J. Culbert	MS 1986
2008	Russell P. Austin	MA 1980
2008	Dilhar Mihidu De Silva	BS 1991, MS 1994
2008	Preston Johnson, Jr.	MBA 1983
2008	Michael L. Landolt	BS 1985
2008	Katherine Keys Reeves	BBA 1998
2007	Marilyn Kurtz Lunney	MA 1993
2007	Keith A. Parrott	MHA 1995
2007	Rosalind Calvert Perez	Certification 1993
2006	Robert C. Garcia	BBA 1976
2006	Lucille Pack Gedies	MBA 1993
2006	Darla Schneifer McKittrick	MS 1992
2005	Arnold Adair	Ed.D. 2010, Certification 1988 & 1999
2005	Kimberly Campbell	BBA 1987, MBA 1992
2005	Randy Garner	BS 1986, MA 1989
2005	Charles McClelland	MA 2000

Distinguished Alumni Award - 1984-2017 continued

Year	Honoree	Degree(s)
2004	Tery Hernandez	MS 1980
2004	Leslye Mize	MA 1980
2004	Janet Kelly	MS 1985
2003	Guion S. Bluford, Jr.	MBA 1987
2003	Emmeline Dodd	MS 1990
2003	Sandra S. Mossman	Certification 1987
2002	Marjorie H. Jacobson	BA 1984
2002	Frank Perez	MA 1982
2002	Jennie Ward Robinson	BS 1992
2000	J. Pamela Culpepper-Cr	MA 1983, BS 1980
1999	To commemorate the university's 25th anniversary, the association paid special tribute to the 25 past recipients of the UHCL Distinguished Alumni Award.	
1999		
1998	Tina Farrell	Ed.D. 2009, MA 1985, Certification 1993
1998	Russell Meyers	MS 1986
1998	Patricia Wilson	MS 1979, Certification 1988
1998	Victoria Yamasaki	BS 1988
1997	Gerald Clause	MS 1978
1997	Dawn Korman	BS 1981
1997	Katherine Tamer	MS 1977
1996	Mary Ainslie	BBA 1975, MS 1978
1996	Sandra Johnson	MBA 1982
1995	Mike Merkel	BA 1990, MA 1994
1994	Linda Robinson	MA 1978, Certification 1981, Certification 1986
1993	Susan Garman	BPA, BS 1989
1993	David Vandewater	BPA, MS 1977
1993	Anne Wismer-Landolt	MS 1977
1992	Raymond Khoury	BPA, MS 1980
1992	Jane B. Reeves	BPA, MS 1981
1991	Steve Phelps	BPA, BBA 1980
1990	Charles A. Biggs	BA 1984, MA 1987
1989	Story Musgrave	MA 1987
1988	Micheal Reeves	MS 1977
1987	Peggy Channing	MS 1982
1986	William Gresco	MS 1980
1985	Kippy Caraway	BA 1977, MA 1985
1984	Elizabeth Leibfried	MA 1979
1984	Marilyn Wiley	MBA 1982, MS 1983

Section 6 - External and Alumni Relations

Early Achievement Award

The Early Achievement Award is granted to a University of Houston-Clear Lake alumnus/a (as defined below), age 45 or younger, for significant accomplishments in business or professional life, or for service to the university and/or the UHCL Alumni Association.

Year	Honoree	Degree(s)
2017	Michael Larranaga	MS 1998
2016	Kristi Koncaba	BS 1997, MA 2005
2015	Katherine Becker	BS 2003, MHA/MBA 2006
2015	Marla Davis Chandler	BA 1996, MS 2001
2015	Kanchana Weerasinghe	BS 1998, MS 2000
2013	M. Shane Spees	MHA 1997
2012	Mitali Paul	MHA/MBA 2005
2011	Nefertari Brown Mundy	MS 2006, MS 2009
2011	Christa English George	BA 1995
2010	James Springfield	MHA 1991
2009	Corey Wilson	BS 2002
2007	Sameer Pande	MS 2002
2006	Chris Wagner	MS 2002
2005	Cris Curnutt Daskevich	MHA/MBA 1997

Marilyn S. Sims Leadership Service Award

The Marilyn S. Sims Leadership Service Award is presented to an alumnus/a whose exceptional contributions to the University of Houston-Clear Lake and its community strengthens and supports the values and the mission of the institution. It is presented to persons whose special qualities and accomplishments merit university recognition.

Year	Honoree	Degree(s)
2016	Robert C. Hasson, Jr.,	MS 1996, Ed.D. 2011
2014	Ann Hammond	BBA 1982
2010	Joyce Delores Taylor	MA 2004, MA 2006, MA 2008
2007	Cheryl Evans	MA 1982
2005	Kimberly Barfield	BS 2001
2004	Marilyn Lunney	MA 1993

Section 6 - External and Alumni Relations

Outstanding Professor Award

The Outstanding Professor Award honors University of Houston-Clear Lake professors who embody the fulfillment of learning and discovery by utilizing innovative teaching methods to inspire students and building a sense of community among students through active involvement with student organizations, shared governance and mentoring. Honorees share a passion for the university, its mission and the potential for change through education. The UHCL Alumni Association has presented the Outstanding Professor Award since 2006.

Year	Honoree	Position
2017	Daniel Silvermintz	Associate Professor, Humanities, College of Human Sciences and Humanities
2016	Lisa A. Jones	Associate Professor, Multicultural Education, UHCL College of Education
2015	Ashish Chandra	Professor of Healthcare Administration, School of Business
2014	Ken Black	Professor of Decision Sciences, School of Business
2014	Stephen M. Cherry	Assistant Professor of Sociology, School of Human Sciences and Humanities
2013	John Gorman	Professor of Literature, School of Human Sciences and Humanities
2012	James C. Benson	Associate Professor of Legal Studies, School of Business
2012	Kim A. Case	Associate Professor of Women's Studies and Psychology, School of Human Sciences and Humanities
2011	Kwok-Bun Yue	Professor and Chair of Computing and Mathematics Division, School of Science and Computer Engineering
2010	Denise McDonald	Associate Professor of Curriculum and Instruction, School of Education
2009	Caroline Crawford	Associate Professor of Instructional Technology, School of Education
2009	Gretchen Mieszkowski	Professor of Literature, School of Human Sciences and Humanities
2008	Richard Puzdrowski	Associate Professor and Chair of the Division of Natural Sciences, School of Science and Computer Engineering
2007	Naveed Saleem	Professor and Chair of Management Information Systems, School of Business
2006	Charles McKay	Dean (retired), School of Science and Computer Engineering

Section 6 - External and Alumni Relations

University of Houston-Clear Lake Official Alumni Residency Counts Sorted by State

Please contact the Office of University Advancement for more detail on former graduates. This information is based on spatial data that was provided to OIE in a report named "University of Houston-Clear Lake Official Alumni Counts August 1, 2018" from the Office of University Alumni Relations. Missing or invalid address information is not depicted on this page.

Sorted by State

State	Number	Percent
Armed Forces the America - AA	4	0.01
Armed Forces Europe - AE	22	0.04
Alaska - AK	36	0.06
Alabama - AL	188	0.30
Armed Forces Pacific - AP	9	0.01
Arkansas - AR	153	0.25
Arizona - AZ	261	0.42
California - CA	1051	1.70
Colorado - CO	505	0.82
Connecticut -CT	80	0.13
District of Columbia - DC	21	0.03
Delaware - DE	33	0.05
Florida - FL	662	1.07
Georgia - GA	313	0.51
Hawaii - HI	28	0.05
Iowa - IA	68	0.11
Idaho - ID	37	0.06
Illinois - IL	312	0.50
Indiana - IN	152	0.25
Kansas - KS	104	0.17
Kentucky - KY	77	0.12
Louisiana - LA	319	0.52
Massachusetts -MA	0	0.00
Maryland - MD	203	0.33
Maine - ME	0	0.00
Michigan - MI	207	0.33
Minnesota - MN	117	0.19
Missouri - MO	216	0.35
Northern Mariana Island - MP	1	0.00
Mississippi - MS	84	0.14

Sorted by State

State	Number	Percent
Montana - MT	31	0.05
North Carolina - NC	322	0.52
North Dakota - ND	9	0.01
Nebraska - NE	55	0.09
New Hampshire - NH	0	0.00
New Jersey - NJ	308	0.50
New Mexico - NM	129	0.21
Nevada- NV	89	0.14
New York - NY	233	0.38
Ohio - OH	236	0.38
Oklahoma - OK	175	0.28
Oregon - OR	118	0.19
Pennsylvania - PA	216	0.35
Puerto Rico - PR	0	0.00
Rhode Island - RI	0	0.00
South Carolina - SC	94	0.15
South Dakota - SD	14	0.02
Tennessee - TN	225	0.36
Texas - TX	53,373	86.29
Utah - UT	76	0.12
Virginia - VA	415	0.67
Virgin Islands - VI	0	0.00
Vermont - VT	8	0.01
Washington - WA	318	0.51
Wisconsin - WI	102	0.16
West Virginia - WV	32	0.05
Wyoming - WY	15	0.02
Total	61,856	100.00

Please note that the count does not represent a count of total alumni as the Alumni Office does not have current addresses on all alumni.