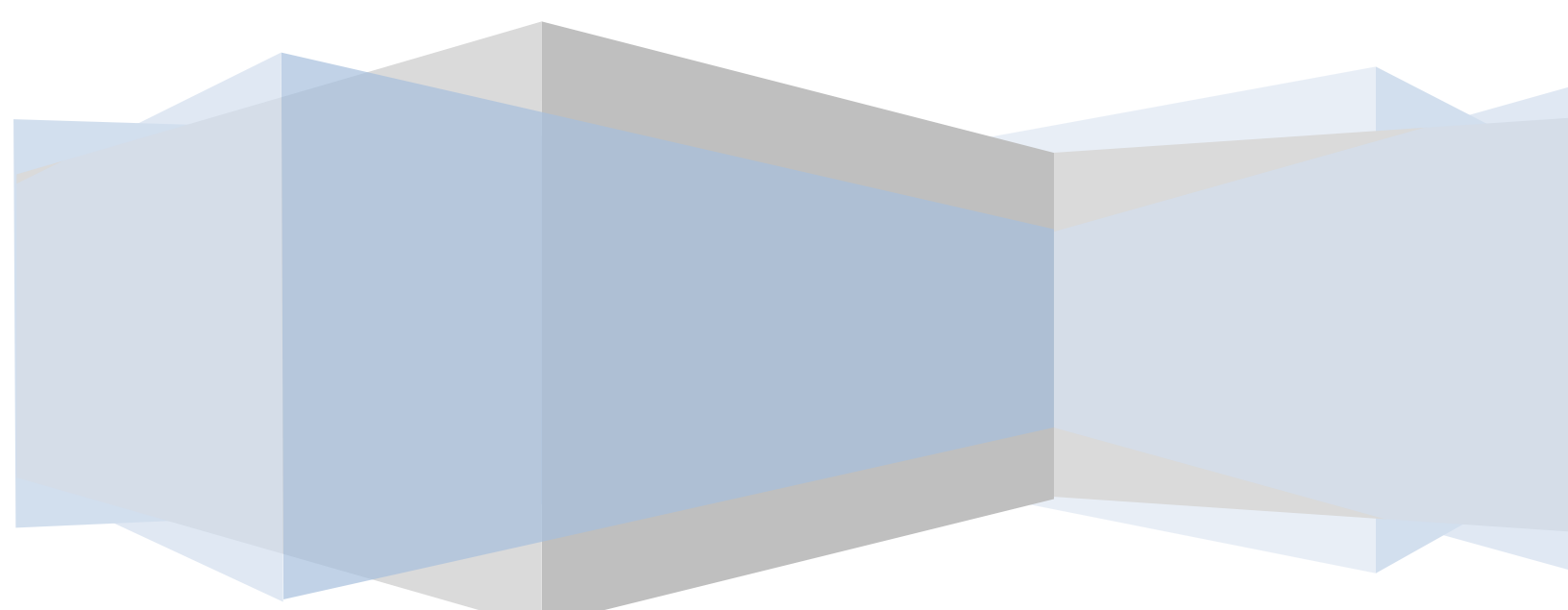




University
of Houston
Clear Lake

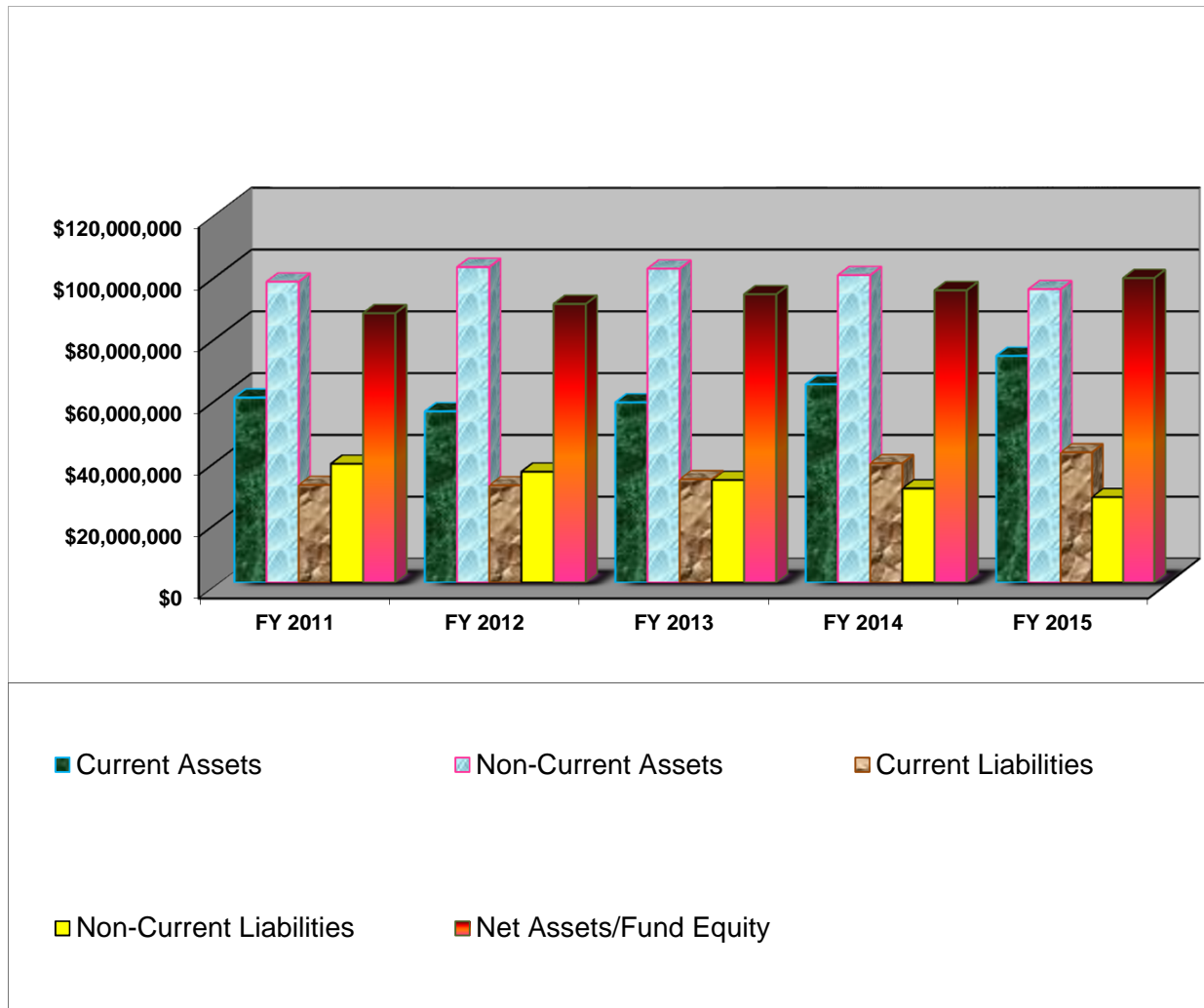
**University of Houston-Clear Lake
Financial Summary
For the year ended August 31, 2015**



University of Houston-Clear Lake
Financial Summary as of August 31, 2015

<u>Table of Contents</u>	<u>Page #</u>
Five Years Statement of Net Assets/Fund Equity Comparison Graph.....	2
FY 2015 Revenue by Sources and Expenditures by Classification.....	3
Graph of FY 2015 Revenue and Operating Expenditures.....	4
FY 2015 Tuition and Fees Classification.....	5
Graph of Net Assets/Fund Equity Comparison Report by fiscal quarters.....	6
Comparative Data of Revenues and Expenditures by fiscal years.....	7
Five Years Statement of Major Sources of Revenue Comparison Data.....	8
Five Years Statement of Expenditures by Classification Comparison Data.....	9
Statement of Net Assets/Fund Equity as of December, 20XX	10

University of Houston-Clear Lake
Five Years Statement of Net Assets/Fund Equity Comparison Data



	FY 2011	FY 2012	FY 2013	FY 2014	FY 2015
Current Assets	59,879,973	55,423,963	58,343,683	64,177,698	73,395,792
Non-Current Assets	97,390,325	102,133,496	101,613,606	99,525,265	94,970,373
Current Liabilities	31,626,093	31,480,248	33,445,214	38,623,443	42,149,704
Non-Current Liabilities	38,451,907	35,885,707	33,193,281	30,471,391	27,644,238
Net Assets/Fund Equity	87,192,298	90,191,504	93,318,794	94,608,129	98,572,223
Change (from prior year)		3.44%	3.47%	1.38%	4.19%

Note: Fund Equity above does not reflect the TRS Pension liability for an amount of \$14,614,489.99 as of August 31, 2015. The Net Fund Equity with TRS Pension liability is \$83,957,733.33 as of August 31, 2015.

University of Houston-Clear Lake
FY 2015 Revenue by Sources and Expenditure by Classification
For the year ended August 31, 2015

Revenue by Major Sources

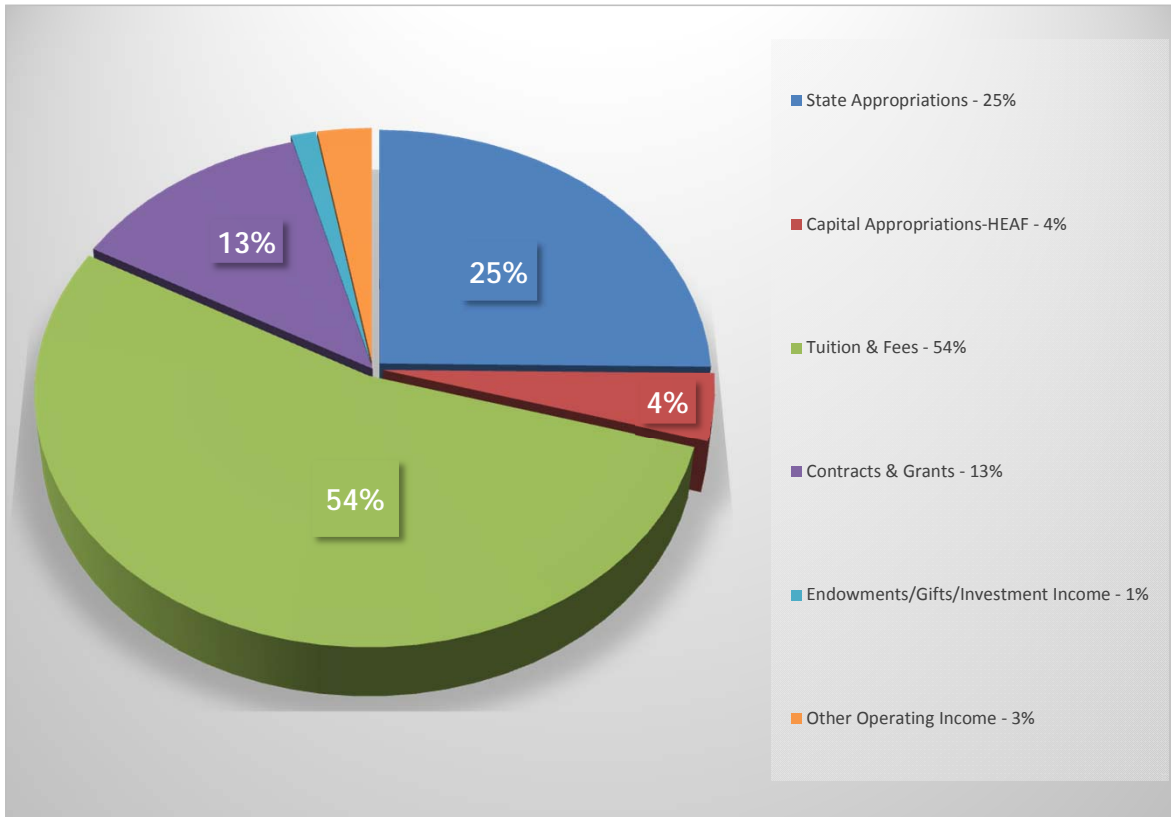
<u>Major Source of Revenues</u>	<u>Amount</u>	<u>Percentage</u>
State Appropriations	30,788,658.57	25%
Capital Appropriations-HEAF	5,214,167.00	4%
Tuition and Fees	65,638,663.06	54%
Contracts & Grants	15,443,385.89	13%
Endowments/Gifts/Investment Income	1,611,208.31	1%
Other Operating & Non Operating Income	3,448,344.84	3%
	<hr/>	
	<u>122,144,427.67</u>	<u>100%</u>

Operating Expenditures by Classification

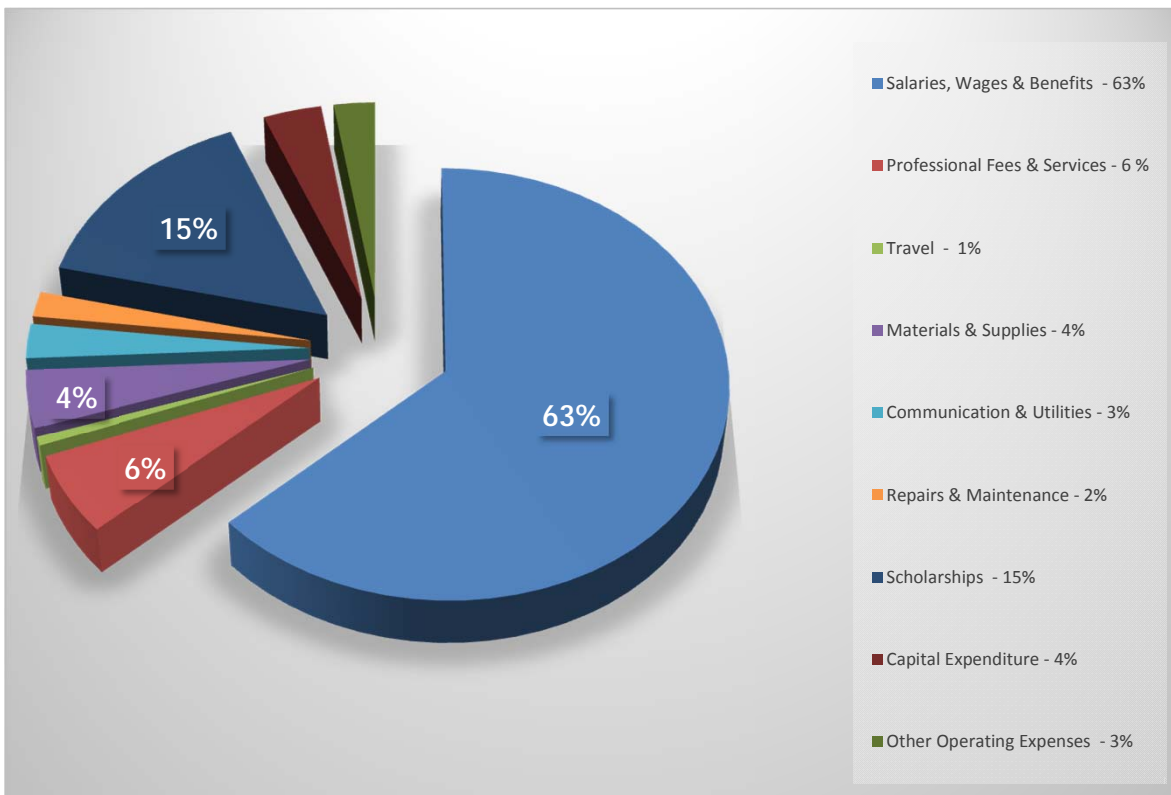
<u>Expenditures by Classification</u>	<u>Amount</u>	<u>Percentage</u>
Salaries, Wages & Benefits	73,631,934.93	63%
Professional Fees & Services	6,960,749.57	6%
Travel	777,806.99	1%
Materials & Supplies	5,041,490.96	4%
Communication & Utilities	3,028,930.17	3%
Repairs & Maintenance	2,207,785.62	2%
Scholarships (Financial Aid/Financial Assistance)	17,671,971.24	15%
Capital Expenditure	3,178,926.74	3%
Other Operating Expenses	3,912,839.59	3%
	<hr/>	
	<u>116,412,435.81</u>	<u>100%</u>

University of Houston-Clear Lake
FY 2015 Revenue by Sources & Expenditures by Classification
For the period ended August 31, 2015

FY 2015 Revenue by Major Sources

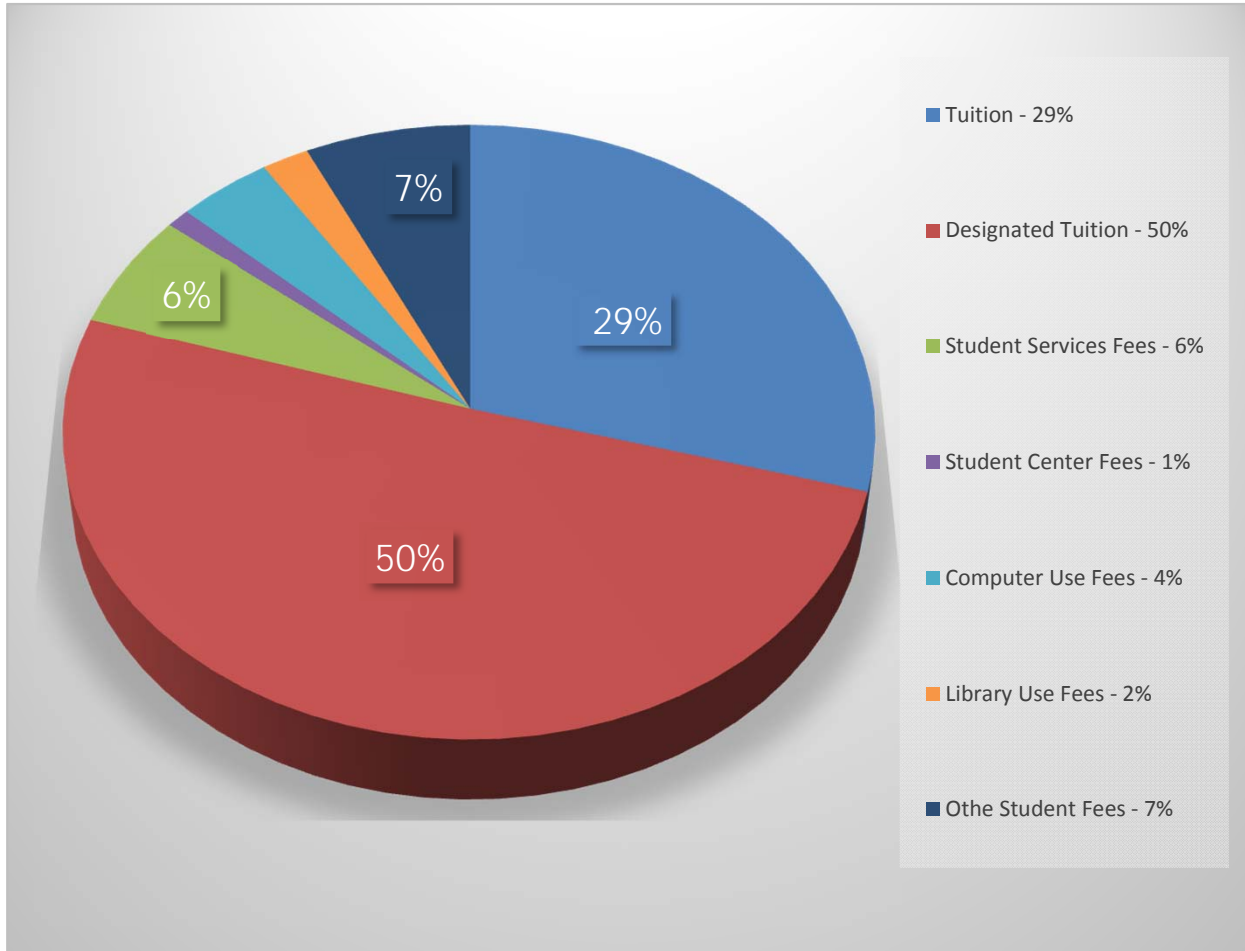


FY 2015 Expenditures by Classification



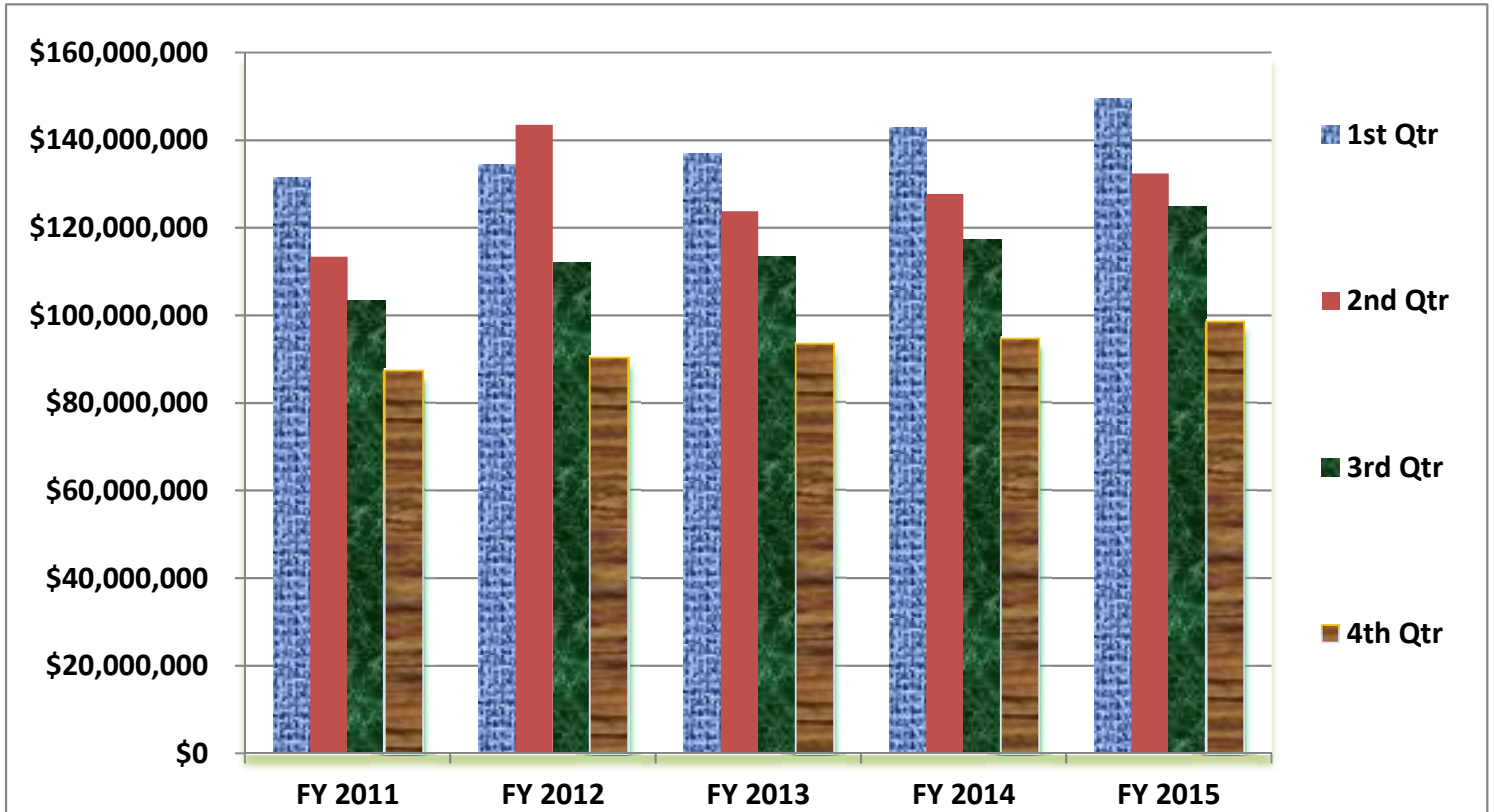
**University of Houston-Clear Lake
 FY 2015 Tuition and Fees Classification
 For the period ended August 31, 2015**

FY 2015 Tuition and Fees



Tuition and Fees	Amount	%
Tuition	19,274,752.16	29%
Designated Tuition	32,556,877.62	50%
Student Services Fees	4,081,368.95	6%
Student Center Fees	626,124.50	1%
Computer Use Fees	2,908,446.95	4%
Library Use Fees	1,368,792.80	2%
Othe Student Fees	4,822,300.08	7%
Total	65,638,663.06	100%

University of Houston-Clear Lake
Graph of Net Assets/Fund Equity Comparison Report
By Fiscal Quarters for FY 2011 through FY 2015



Fiscal Quarter	FY 2011	FY 2012	FY 2013	FY 2014	FY 2015
November 1st Qtr	\$131,476,068	\$134,511,110	\$136,971,326	\$143,006,813	\$149,536,562
February 2nd Qtr	\$113,398,201	\$143,498,131	\$123,765,851	\$127,716,276	\$132,349,489
May 3rd Qtr	\$103,336,941	\$112,163,916	\$113,542,892	\$117,251,405	\$124,966,167
August 4th Qtr	\$87,192,298	\$90,191,504	\$93,318,794	\$94,608,129	\$98,572,223

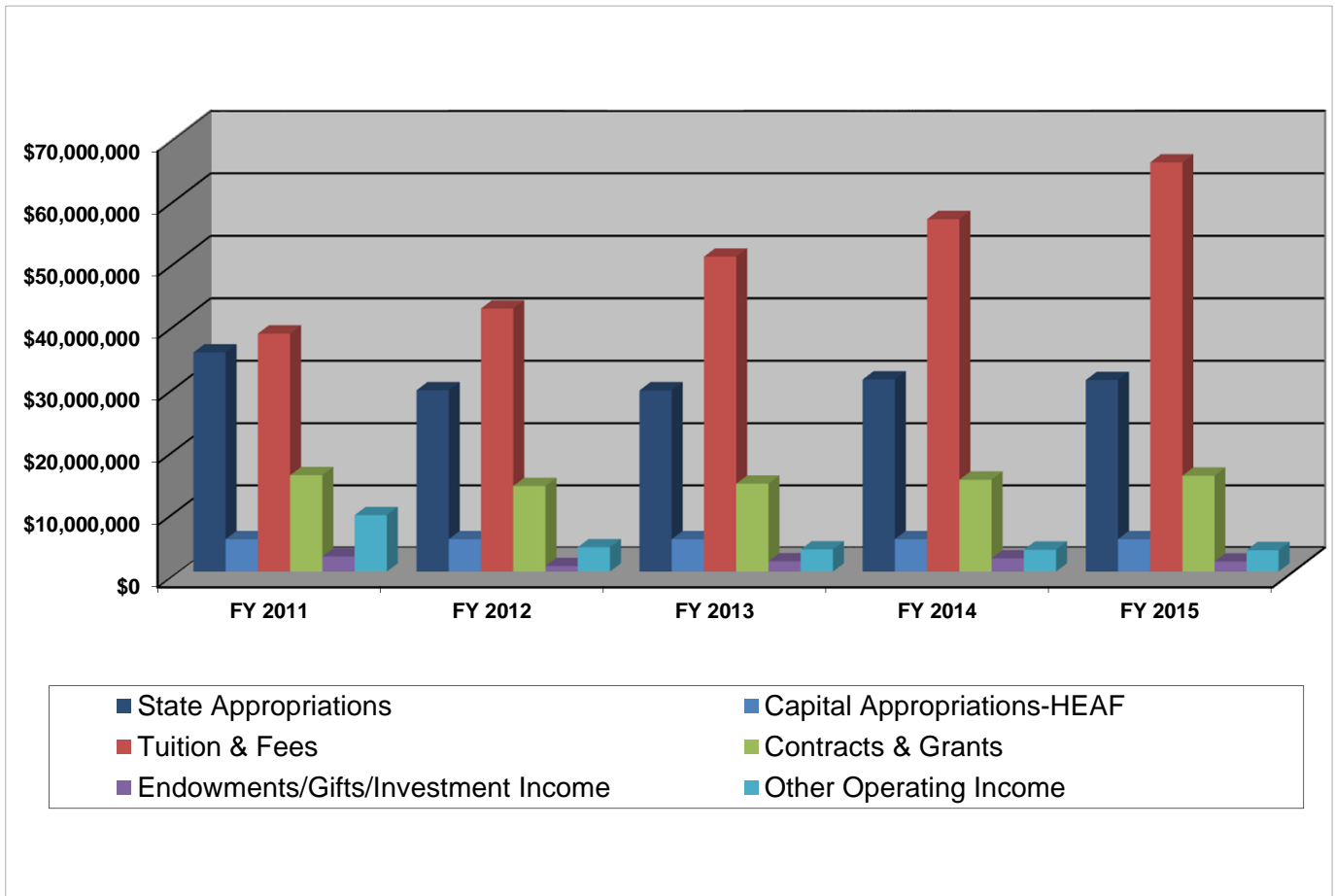
Note: Fund Equity above does not reflect the TRS Pension liability for an amount of \$14,614,489.99 as August 31, 2015. The Net Fund Equity with TRS Pension liability is \$83,957,733.33 as of August 31, 2015.

University of Houston-Clear Lake
Comparative Data of Revenues and Expenditures by Fiscal Year(s)

<u>Revenue by Major Sources</u>	FY 2011	FY 2012	FY 2013	FY 2014	FY 2015
State Appropriations	35,212,454.10	29,158,395.56	29,140,219.42	30,891,158.43	30,788,658.57
Capital Appropriations-HEAF	5,214,167.00	5,214,167.00	5,214,167.00	5,214,167.00	5,214,167.00
Tuition & Fees	38,232,648.74	42,242,168.37	50,554,454.78	56,552,047.32	65,638,663.06
Contracts & Grants	15,526,664.14	13,784,707.03	14,158,306.26	14,791,701.50	15,443,385.89
Endowments/Gifts/Investment Income	2,423,013.48	904,224.04	1,641,953.87	2,115,412.33	1,611,208.31
Other Operating Income	9,076,568.26	3,905,752.55	3,562,661.51	3,516,865.11	3,448,344.84
	\$ 105,685,515.72	\$ 95,209,414.55	\$ 104,271,762.84	\$ 113,081,351.69	\$ 122,144,427.67

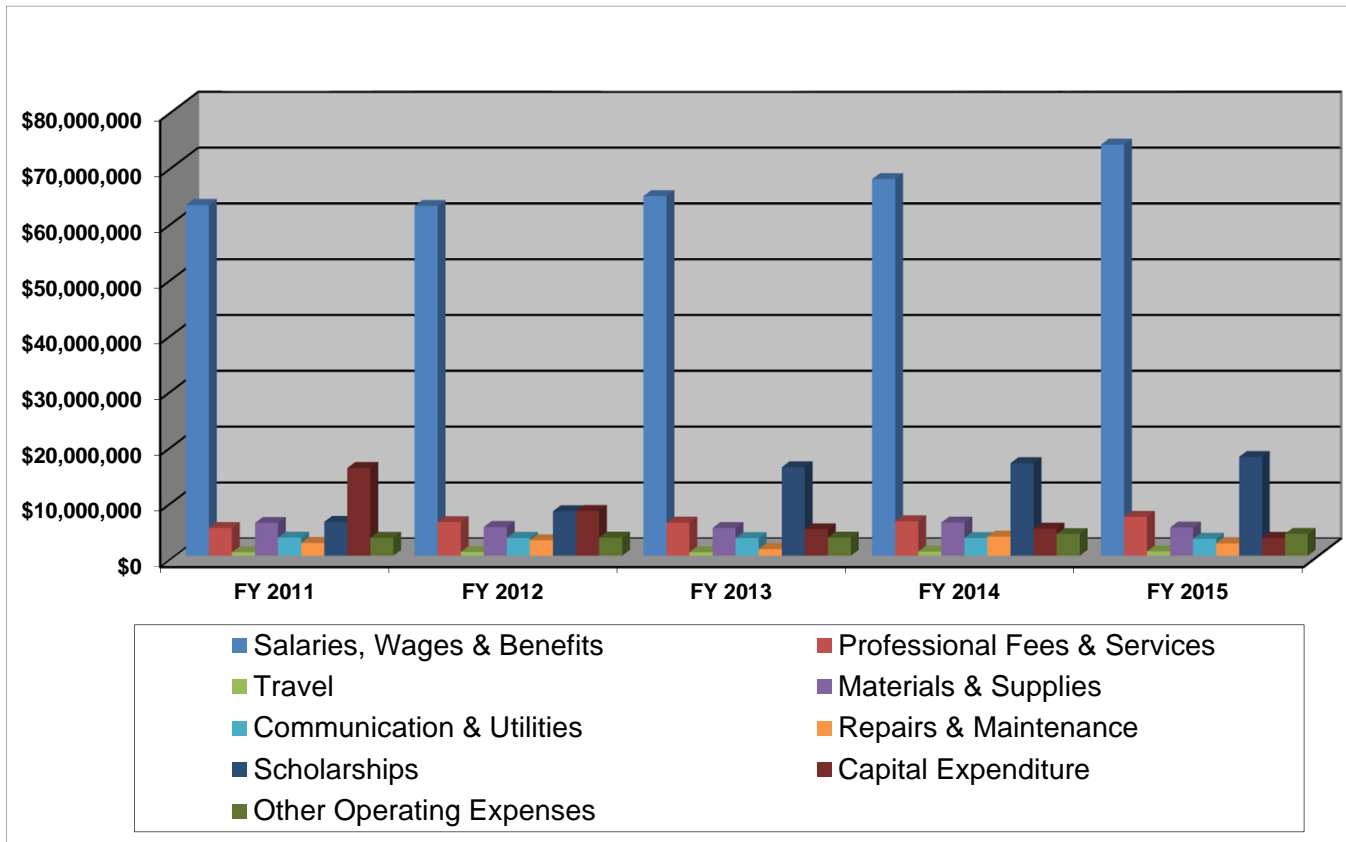
<u>Expenditures by Classification</u>	FY 2011	FY 2012	FY 2013	FY 2014	FY 2015
Salaries, Wages & Benefits	62,818,829.48	62,660,749.54	64,404,746.27	67,466,902.06	73,631,934.93
Professional Fees & Services	4,965,258.55	6,017,971.49	5,919,299.02	6,151,439.50	6,960,749.57
Travel	610,833.69	656,488.42	646,296.99	760,725.49	777,806.99
Materials & Supplies	5,869,196.71	5,139,726.75	4,958,678.25	5,936,660.90	5,041,490.96
Communication & Utilities	3,247,575.50	3,187,598.78	3,168,831.44	3,170,226.66	3,028,930.17
Repairs & Maintenance	2,281,909.35	2,763,867.04	1,186,947.83	3,420,818.06	2,207,785.62
Scholarships (Financial Aid/Assistance)	6,056,182.27	7,969,465.24	15,820,929.28	16,557,363.81	17,671,971.24
Capital Expenditure	15,695,059.42	8,015,363.80	4,724,612.94	4,853,152.47	3,178,926.74
Other Operating Expenses	3,204,902.15	3,214,715.06	3,230,131.28	3,876,263.62	3,912,839.59
	\$ 104,749,747.12	\$ 99,625,946.12	\$ 104,060,473.30	\$ 112,193,552.57	\$ 116,412,435.81

**University of Houston-Clear Lake
Five Years Statement of Major Sources of Revenue Comparison Data**



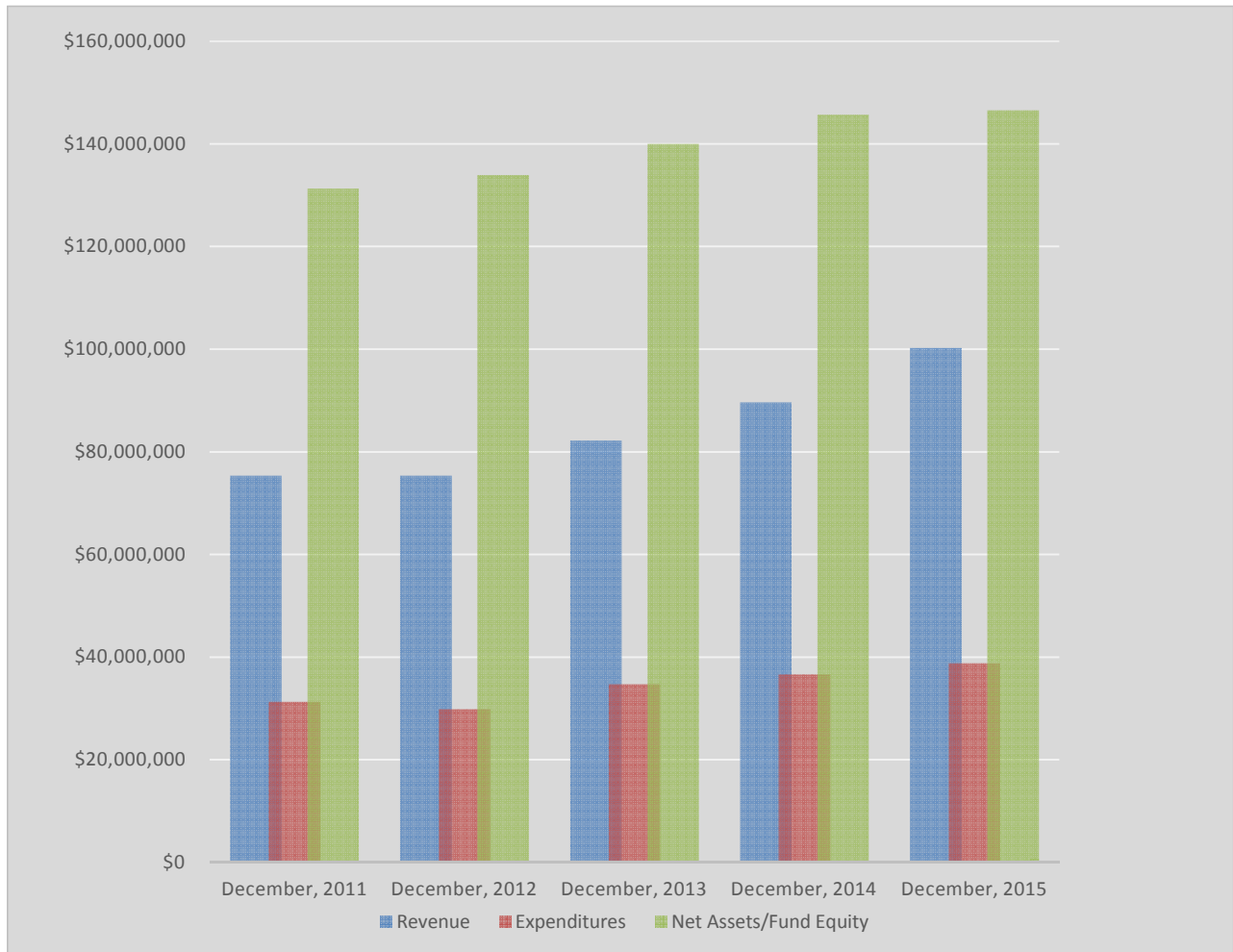
Major Sources of Revenue	FY 2011	FY 2012	FY 2013	FY 2014	FY 2015
State Appropriations	35,212,454	29,158,396	29,140,219	30,891,158	30,788,659
Capital Appropriations-HEAF	5,214,167	5,214,167	5,214,167	5,214,167	5,214,167
Tuition & Fees	38,232,649	42,242,168	50,554,455	56,552,047	65,638,663
Contracts & Grants	15,526,664	13,784,707	14,158,306	14,791,702	15,443,386
Endowments/Gifts/Investment Income	2,423,013	904,224	1,641,954	2,115,412	1,611,208
Other Operating Income	9,076,569	3,905,753	3,562,662	3,516,866	3,448,345
	105,685,516	95,209,415	104,271,763	113,081,352	122,144,428

**University of Houston-Clear Lake
Five Years Statement of Expenditures by Classification Comparison Data**



Expenditures by Classifications	FY 2011	FY 2012	FY 2013	FY 2014	FY 2015
Salaries, Wages & Benefits	62,818,829	62,660,750	64,404,746	67,466,902	73,631,933
Professional Fees & Services	4,965,259	6,017,971	5,919,299	6,151,440	6,960,750
Travel	610,834	656,488	646,297	760,725	777,807
Materials & Supplies	5,869,197	5,139,727	4,958,678	5,936,661	5,041,491
Communication & Utilities	3,247,576	3,187,599	3,168,831	3,170,227	3,028,930
Repairs & Maintenance	2,281,909	2,763,867	1,186,948	3,420,818	2,207,786
Scholarships	6,056,182	7,969,465	15,820,929	16,557,364	17,671,971
Capital Expenditure	15,695,059	8,015,364	4,724,613	4,853,152	3,178,927
Other Operating Expenses	3,204,902	3,214,715	3,230,131	3,876,264	3,912,841
	104,749,747	99,625,946	104,060,473	112,193,553	116,412,436

**University of Houston-Clear Lake
Statement of Net Assets/Fund Equity
As of December 31, 2015**



	<u>As of December, 2011</u>	<u>As of December, 2012</u>	<u>As of December, 2013</u>	<u>As of December, 2014</u>	<u>As of December, 2015</u>
Revenue	\$75,381,759	\$75,347,572	\$82,193,700	\$89,613,355	\$100,228,348
Expenditures	\$31,290,908	\$29,873,757	\$34,740,213	\$36,657,586	\$38,867,514
Net Assets/Fund Equity	\$131,314,366	\$133,963,619	\$140,016,861	\$145,710,334	\$146,590,928