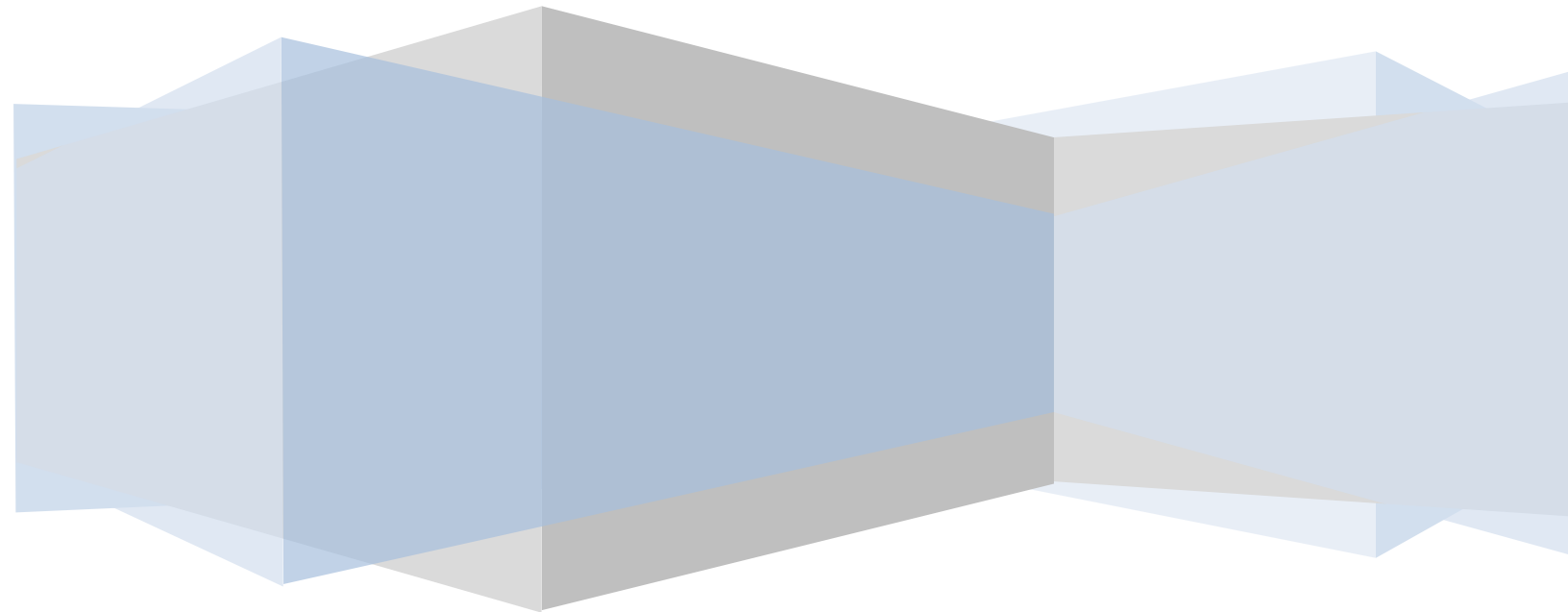




University  
of Houston  
Clear Lake

**University of Houston-Clear Lake  
Financial Summary  
For the year ended August 31, 2014**



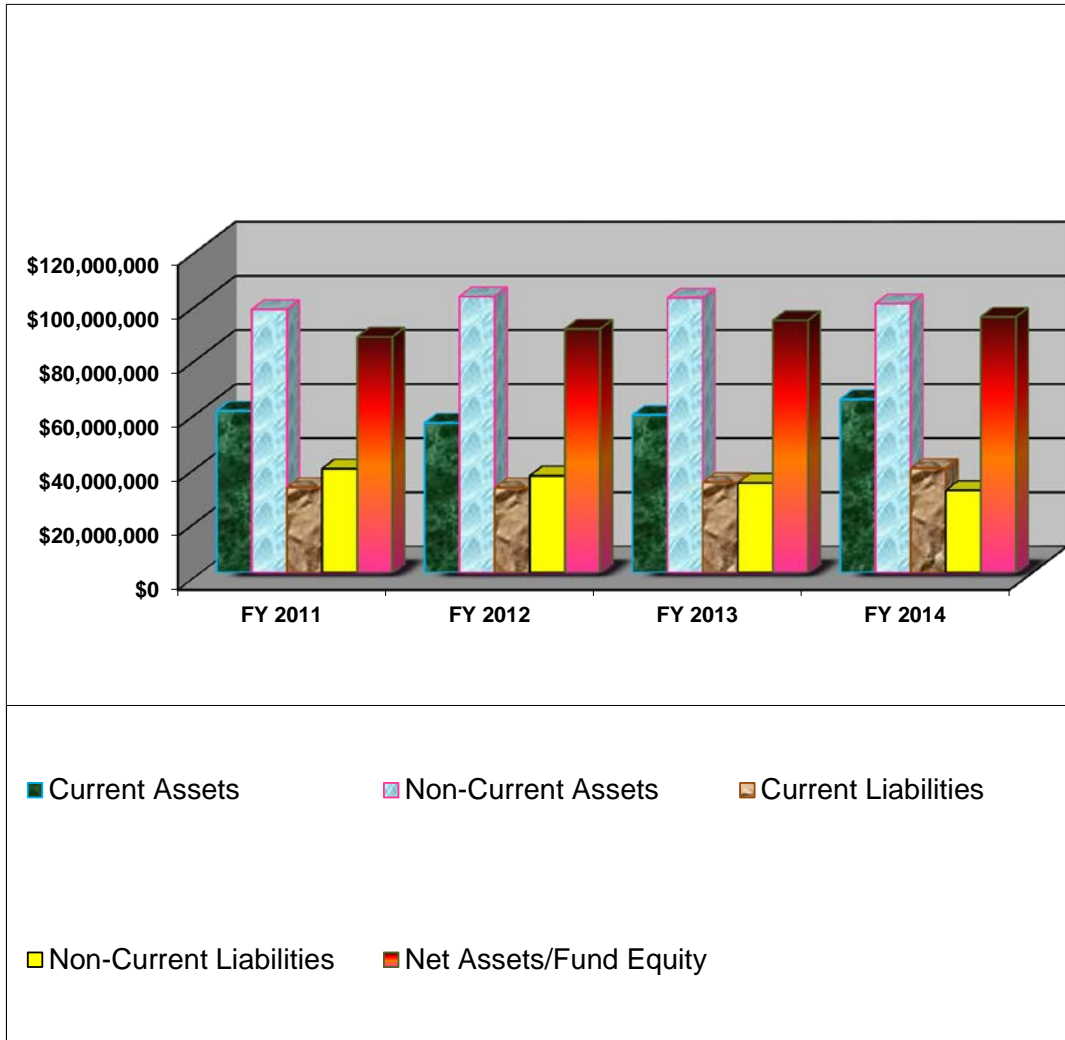
**University of Houston-Clear Lake**  
**Financial Summary as of August 31, 2014**

---

---

<u>Table of Contents</u>	<u>Page #</u>
Four Years Statement of Net Assets/Fund Equity Comparison Graph.....	1
FY 2014 Revenue by Sources and Expenditures by Classification.....	2
Graph of FY 2014 Revenue and Operating Expenditures.....	3
Graph of Net Assets/Fund Equity Comparison Report by fiscal quarters.....	4
Comparative Data of Revenues and Expenditures by fiscal years.....	5
Four Years Statement of Major Sources of Revenue Comparison Data.....	6
Four Years Statement of Expenditures by Classification Comparison Data.....	7
Statement of Net Assets/Fund Equity by fiscal years as of January,20XX .....	8

**University of Houston-Clear Lake**  
**Four Years Statement of Net Assets/Fund Equity Comparison Data**



	FY 2011	FY 2012	FY 2013	FY 2014
Current Assets	59,879,973	55,423,963	58,343,683	64,177,698
Non-Current Assets	97,390,325	102,133,496	101,613,606	99,525,265
Current Liabilities	31,626,093	31,480,248	33,445,214	38,623,443
Non-Current Liabilities	38,451,907	35,885,707	33,193,281	30,471,391
Net Assets/Fund Equity	87,192,298	90,191,504	93,318,794	94,608,129
Change (from prior year)		3.44%	3.47%	1.38%

University of Houston-Clear Lake  
 FY 2014 Revenue by Sources and Expenditure by Classification  
 For the year ended August 31, 2014

**Revenue by Major Sources**

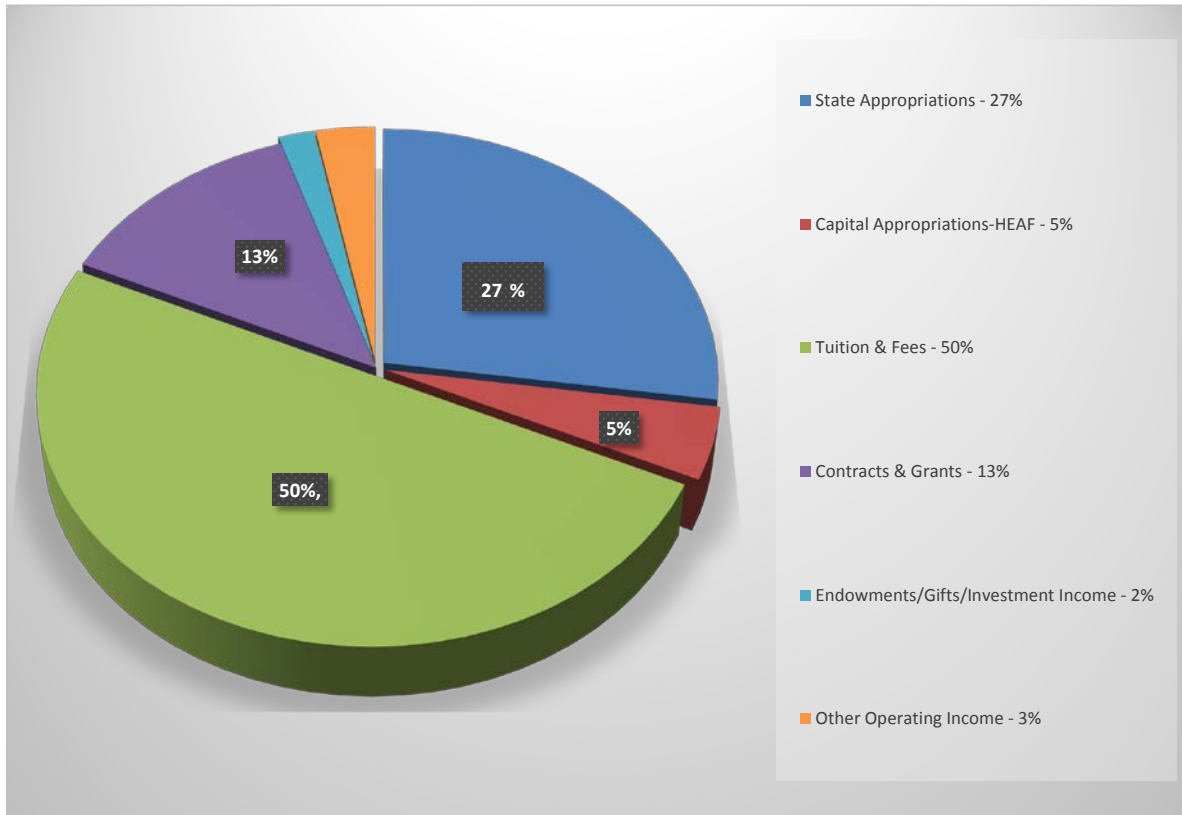
<u>Major Source of Revenues</u>	<u>Amount</u>	<u>Percentage</u>
State Appropriations	30,891,158.43	27%
Capital Appropriations-HEAF	5,214,167.00	5%
Tuition and Fees	56,552,047.32	50%
Contracts & Grants	14,791,701.50	13%
Endowments/Gifts/Investment Income	2,115,412.33	2%
Other Operating & Non Operating Income	3,516,865.11	3%
	<hr/>	
	113,081,351.69	100%
	<hr/> <hr/>	

**Operating Expenditures by Classification**

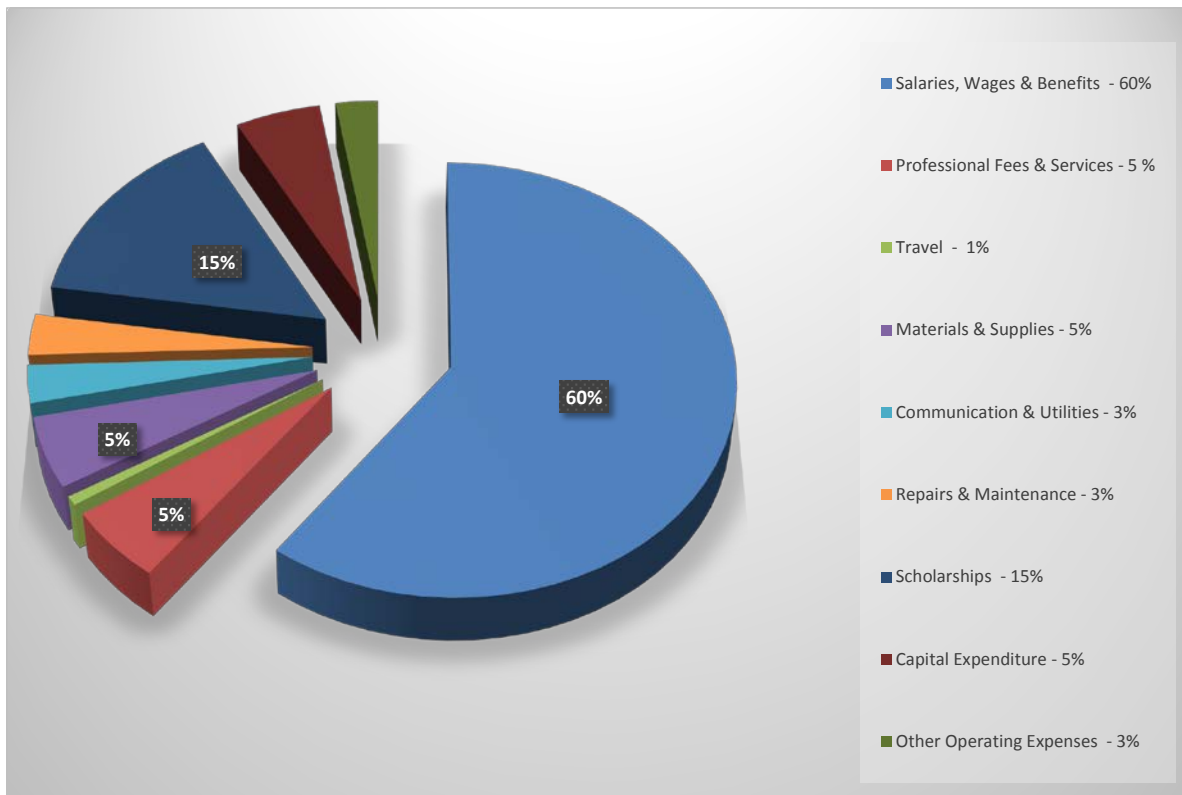
<u>Expenditures by Classification</u>	<u>Amount</u>	<u>Percentage</u>
Salaries, Wages & Benefits	67,466,902.06	60%
Professional Fees & Services	6,151,439.50	5%
Travel	760,725.49	1%
Materials & Supplies	5,936,660.90	5%
Communication & Utilities	3,170,226.66	3%
Repairs & Maintenance	3,420,818.06	3%
Scholarships (Financial Aid/Financial Assistance)	16,557,363.81	15%
Capital Expenditure	4,853,152.47	5%
Other Operating Expenses	3,876,263.62	3%
	<hr/>	
	112,193,552.57	100%
	<hr/> <hr/>	

University of Houston-Clear Lake  
FY 2014 Revenue by Sources & Expenditures by Classification  
For the period ended August 31, 2014

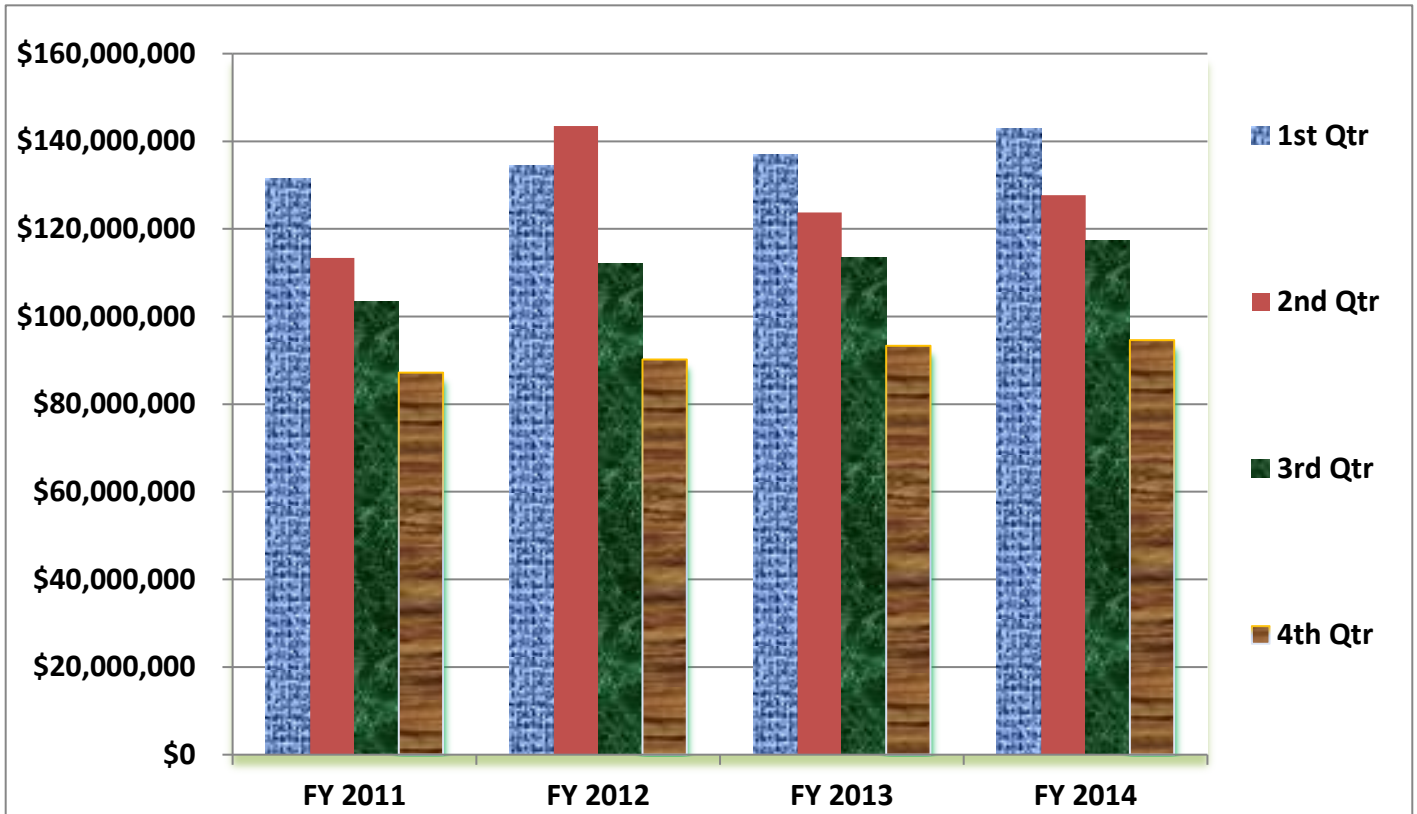
FY 2014 Revenue by Major Sources



FY 2014 Expenditures by Classification



**University of Houston-Clear Lake**  
**Graph of Net Assets/Fund Equity Comparison Report**  
**By Fiscal Quarters for FY 2011 through FY 2014**



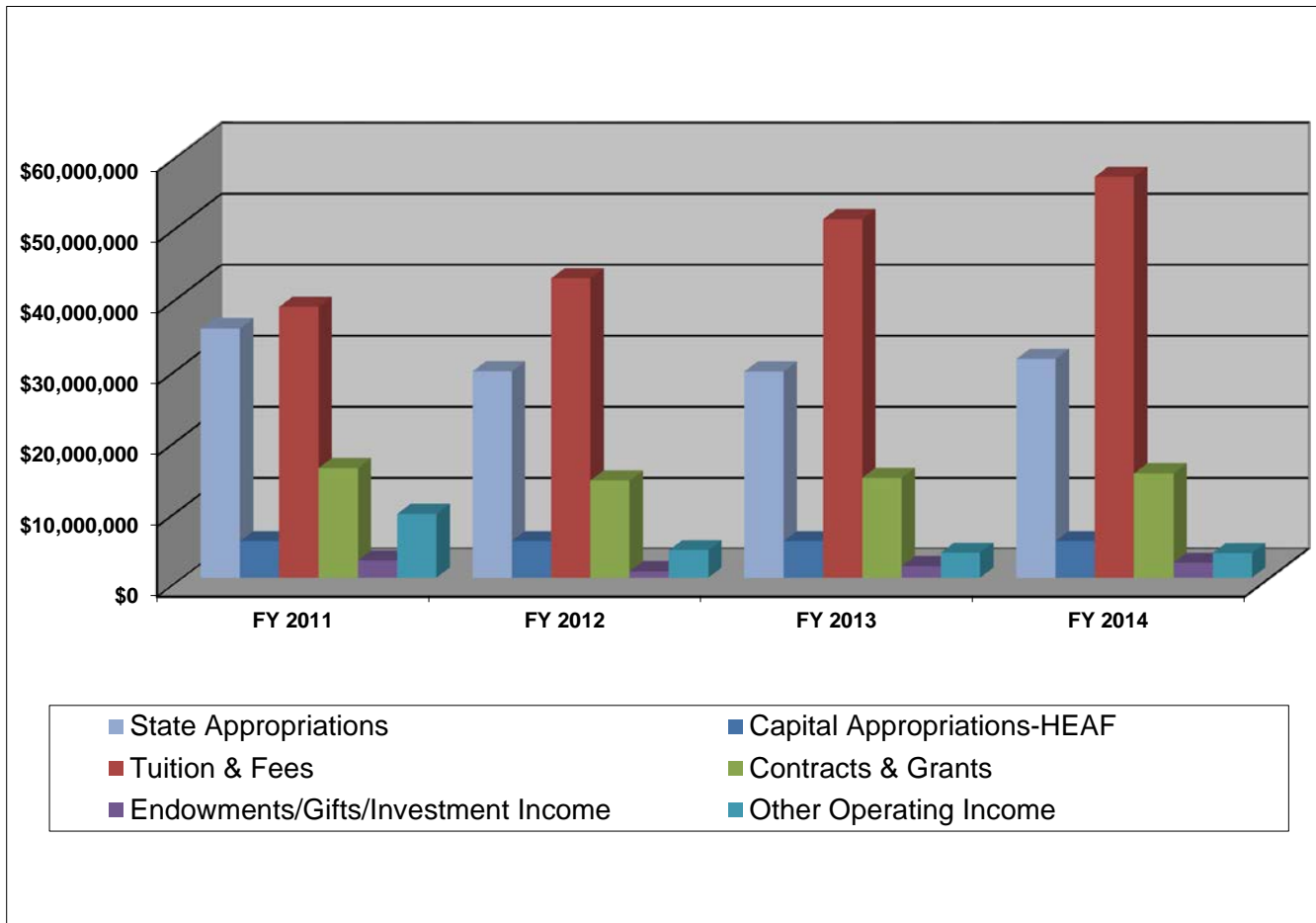
Fiscal Quarter	FY 2011	FY 2012	FY 2013	FY 2014
November 1st Qtr	\$131,476,068	\$134,511,110	\$136,971,326	\$143,006,813
February 2nd Qtr	\$113,398,201	\$143,498,131	\$123,765,851	\$127,716,276
May 3rd Qtr	\$103,336,941	\$112,163,916	\$113,542,892	\$117,251,405
August 4th Qtr	\$87,192,298	\$90,191,504	\$93,318,794	\$94,608,129

**University of Houston-Clear Lake**  
**Comparative Data of Revenues and Expenditures by Fiscal Year(s)**

<u>Revenue by Major Sources</u>	FY 2011	FY 2012	FY 2013	FY 2014	FY 2015 (thru Jan 31, 2015)
State Appropriations	35,212,454.10	29,158,395.56	29,140,219.42	30,891,158.43	28,661,949.08
Capital Appropriations-HEAF	5,214,167.00	5,214,167.00	5,214,167.00	5,214,167.00	5,214,167.00
Tuition & Fees	38,232,648.74	42,242,168.37	50,554,454.78	56,552,047.32	55,689,600.21
Contracts & Grants	15,526,664.14	13,784,707.03	14,158,306.26	14,791,701.50	6,793,482.72
Endowments/Gifts/Investment Income	2,423,013.48	904,224.04	1,641,953.87	2,115,412.33	631,456.65
Other Operating Income	9,076,568.26	3,905,752.55	3,562,661.51	3,516,865.11	1,523,066.76
	<b>\$ 105,685,515.72</b>	<b>\$ 95,209,414.55</b>	<b>\$ 104,271,762.84</b>	<b>\$ 113,081,351.69</b>	<b>\$ 98,513,722.42</b>

<u>Expenditures by Classification</u>	FY 2011	FY 2012	FY 2013	FY 2014	FY 2015 (thru Jan 31, 2015)
Salaries, Wages & Benefits	62,818,829.48	62,660,749.54	64,404,746.27	67,466,902.06	30,556,288.35
Professional Fees & Services	4,965,258.55	6,017,971.49	5,919,299.02	6,151,439.50	2,715,745.32
Travel	610,833.69	656,488.42	646,296.99	760,725.49	272,531.32
Materials & Supplies	5,869,196.71	5,139,726.75	4,958,678.25	5,936,660.90	2,097,481.63
Communication & Utilities	3,247,575.50	3,187,598.78	3,168,831.44	3,170,226.66	1,208,977.50
Repairs & Maintenance	2,281,909.35	2,763,867.04	1,186,947.83	3,420,818.06	1,090,134.02
Scholarships (Financial Aid/Assistance)	6,056,182.27	7,969,465.24	15,820,929.28	16,557,363.81	10,560,391.28
Capital Expenditure	15,695,059.42	8,015,363.80	4,724,612.94	4,853,152.47	1,441,096.83
Other Operating Expenses	3,204,902.15	3,214,715.06	3,230,131.28	3,876,263.62	1,402,246.18
	<b>\$ 104,749,747.12</b>	<b>\$ 99,625,946.12</b>	<b>\$ 104,060,473.30</b>	<b>\$ 112,193,552.57</b>	<b>\$ 51,344,892.43</b>

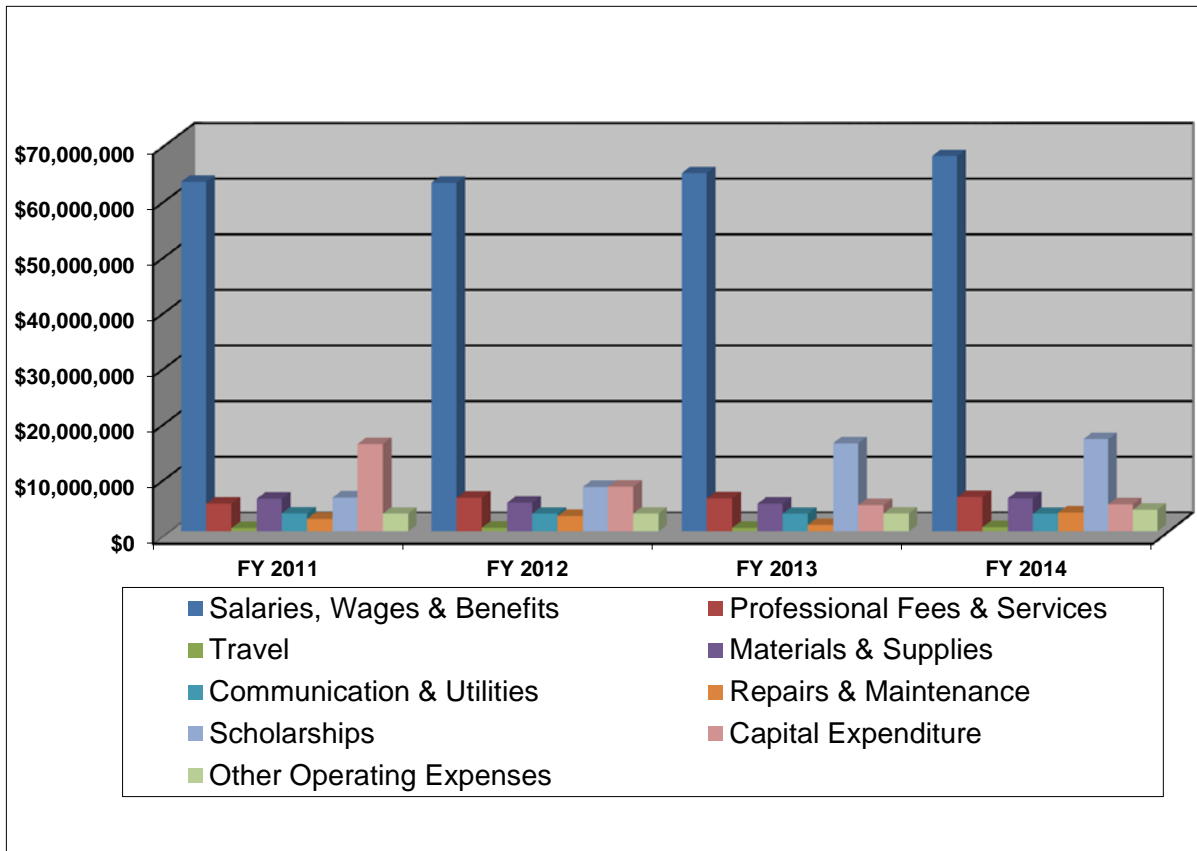
**University of Houston-Clear Lake**  
**Four Years Statement of Major Sources of Revenue Comparison Data**



Major Sources of Revenue	FY 2011	FY 2012	FY 2013	FY 2014
State Appropriations	35,212,454	29,158,396	29,140,219	30,891,158
Capital Appropriations-HEAF	5,214,167	5,214,167	5,214,167	5,214,167
Tuition & Fees	38,232,649	42,242,168	50,554,455	56,552,047
Contracts & Grants	15,526,664	13,784,707	14,158,306	14,791,702
Endowments/Gifts/Investment Income	2,423,013	904,224	1,641,954	2,115,412
Other Operating Income	9,076,569	3,905,753	3,562,662	3,516,866
	<b>105,685,516</b>	<b>95,209,415</b>	<b>104,271,763</b>	<b>113,081,352</b>

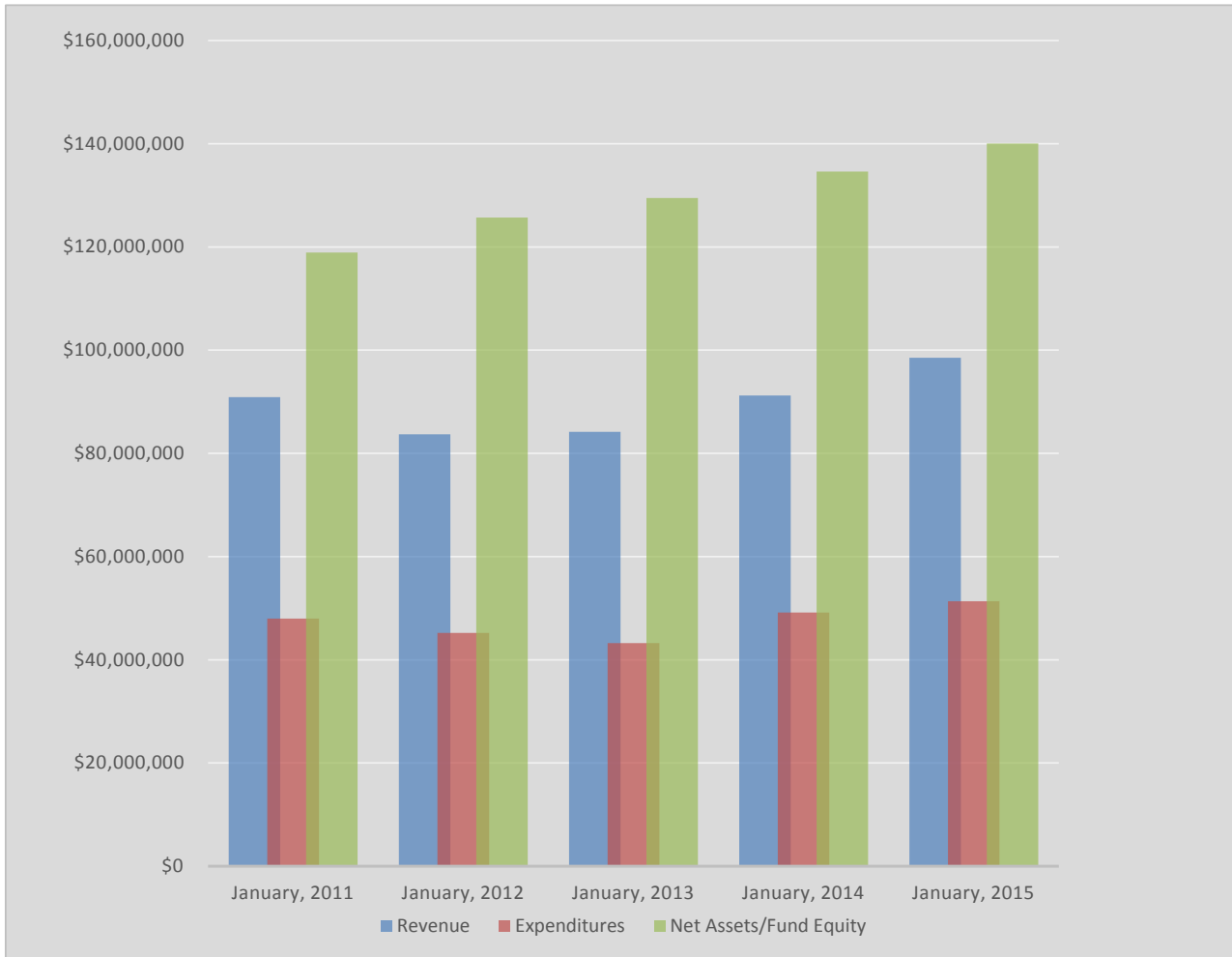


**University of Houston-Clear Lake**  
**Four Years Statement of Expenditures by Classification Comparison Data**



<b>Expenditures by Classifications</b>	<b>FY 2011</b>	<b>FY 2012</b>	<b>FY 2013</b>	<b>FY 2014</b>
Salaries, Wages & Benefits	62,818,829	62,660,750	64,404,746	67,466,902
Professional Fees & Services	4,965,259	6,017,971	5,919,299	6,151,440
Travel	610,834	656,488	646,297	760,725
Materials & Supplies	5,869,197	5,139,727	4,958,678	5,936,661
Communication & Utilities	3,247,576	3,187,599	3,168,831	3,170,227
Repairs & Maintenance	2,281,909	2,763,867	1,186,948	3,420,818
Scholarships	6,056,182	7,969,465	15,820,929	16,557,364
Capital Expenditure	15,695,059	8,015,364	4,724,613	4,853,152
Other Operating Expenses	3,204,902	3,214,715	3,230,131	3,876,264
	<b>104,749,747</b>	<b>99,625,946</b>	<b>104,060,473</b>	<b>112,193,553</b>

**University of Houston-Clear Lake  
Statement of Net Assets/Fund Equity  
As of January 31, 2015**



	<b><u>FY 2011</u></b> <b><u>January, 2011</u></b>	<b><u>FY 2012</u></b> <b><u>January, 2012</u></b>	<b><u>FY 2013</u></b> <b><u>January, 2013</u></b>	<b><u>FY 2014</u></b> <b><u>January, 2014</u></b>	<b><u>FY 2015</u></b> <b><u>January, 2015</u></b>
<b>Revenue</b>	\$90,918,284	\$83,681,318	\$84,170,751	\$91,226,538	\$98,513,722
<b>Expenditures</b>	\$47,984,444	\$45,205,566	\$43,219,576	\$49,154,793	\$51,344,892
<b>Net Assets/Fund Equity</b>	\$118,912,112	\$125,712,267	\$129,469,779	\$134,609,310	\$140,061,420