

University of Houston-Clear Lake
Police Department

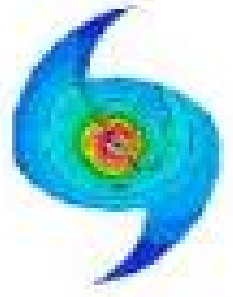
HURRICANE

Storm Advisory & Preparation

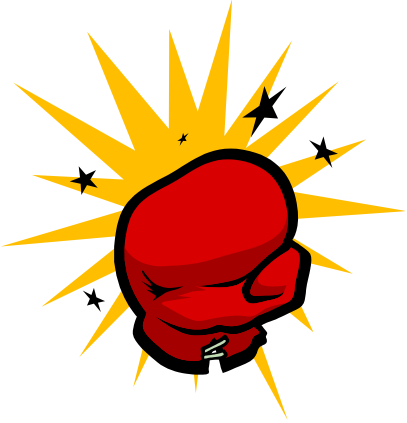
University Hotline: (281)283-2221
www.uhcl.edu/police



What is a Hurricane?

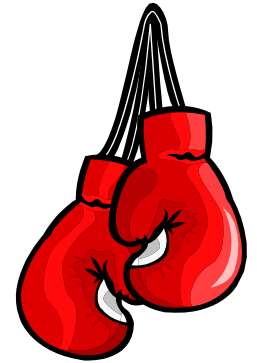


- A Hurricane is a tropical storm that rotates counterclockwise around an “eye”.
- A storm becomes a Hurricane when winds reach 74 mph.
- Hurricanes need warm tropical oceans, moisture and light winds above them – think Gulf of Mexico.
- The Hurricane season normally extends from June 1 to November 20 each year.



Hurricane

Watches vs. Warnings



Hurricane Watches are issued when there is a threat of Hurricane conditions set to strike an area within 36 hours.

Hurricane Warnings are issued when there is a threat of Hurricane conditions set to strike an area within 24 hours.

University Emergency Hotline



For University closures contact our 24 hour Hotline by:

Dialing 2221 from on campus

Dialing (281) 283-2221 from off campus

OR

Online @ www.uhcl.edu

Evacuation Plan

For updated Hurricane Evacuation Routes for Houston and surrounding cities visit the Texas Department of Transportation at-

www.txdot.gov/travel/hurricane.htm



If you are unable to evacuate and require assistance-

Dial 211



DON'T FORGET!!



Portable Radio

Water

Evacuation Plan



Batteries

Flashlights



Medications

Pets

First Aid Kit



FOOD



Safety Procedures

(during the Hurricane)

- Follow instructions of Public Safety, Police Officers, & Emergency Personnel
- Stay indoors until advised to exit
- Stay in interior hallways and keep doors closed
- Do not open windows or doors to see what is happening outside
- Beware of the “eye” of the storm. It is the center of the storm where the air may become calm for a period of time.
- When the “all clear” is given, exit your location with extreme care. Beware of electric wires, broken glass and falling or fallen debris.
- Do not enter structures, vehicles or areas that are damaged. Many people are killed after the storm by electrocution!